

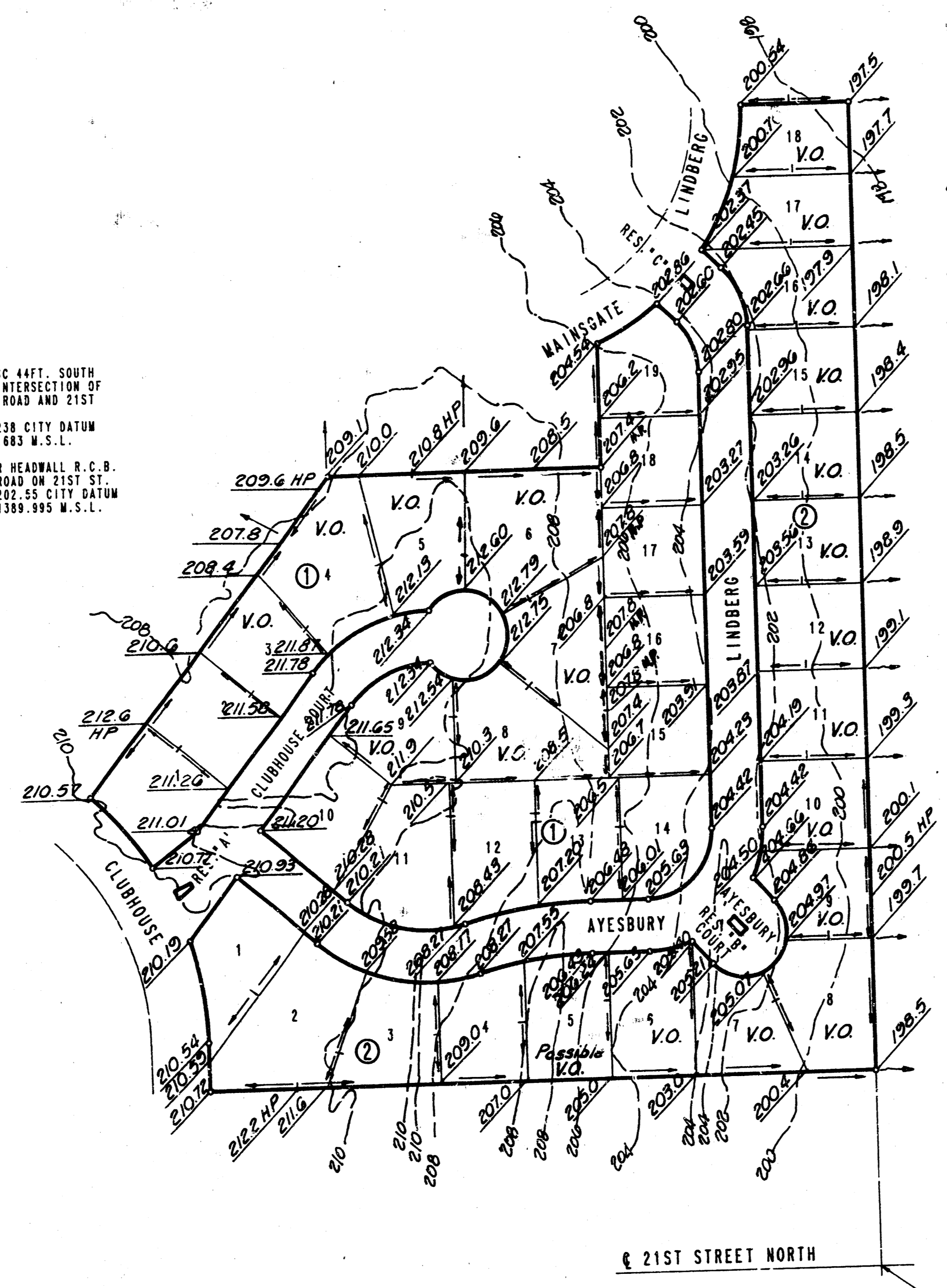
TALLGRASS EAST 6TH ADDITION TO WICHITA, SEDGWICK COUNTY, KANSAS



SCALE: 1"=100'
o - IRON SET

B.M. - CITY OF WICHITA B.M. DISC 44FT. SOUTH AND 48 FT. EAST OF THE INTERSECTION OF THE CENTERLINES OF WEBB ROAD AND 21ST STREET NORTH.
ELEV. +205.238 CITY DATUM
ELEV. +1392.683 W.S.L.

B.M. - CHISELED "O" N.E. CORNER HEADWALL R.C.C. 105C FT. EAST OF WEBB ROAD ON 21ST ST.
ELEV. +205.55 CITY DATUM
ELEV. +1389.995 W.S.L.



- NOTE**
- Existing contours as shown are based on Aerial Photography by Miles Air Photo Survey dated April, 1964.
 - Elevations shown are in City of Wichita Datum.
 - $\overline{\text{VA}}$ = Proposed finished grade.
 - \rightarrow = Drainage direction.
 - V.O. = Lot suitable for View Out.

S.E. CORNER S.W. 1/4
SEC. 4, T27S, R2E
OF THE 6TH P.M.

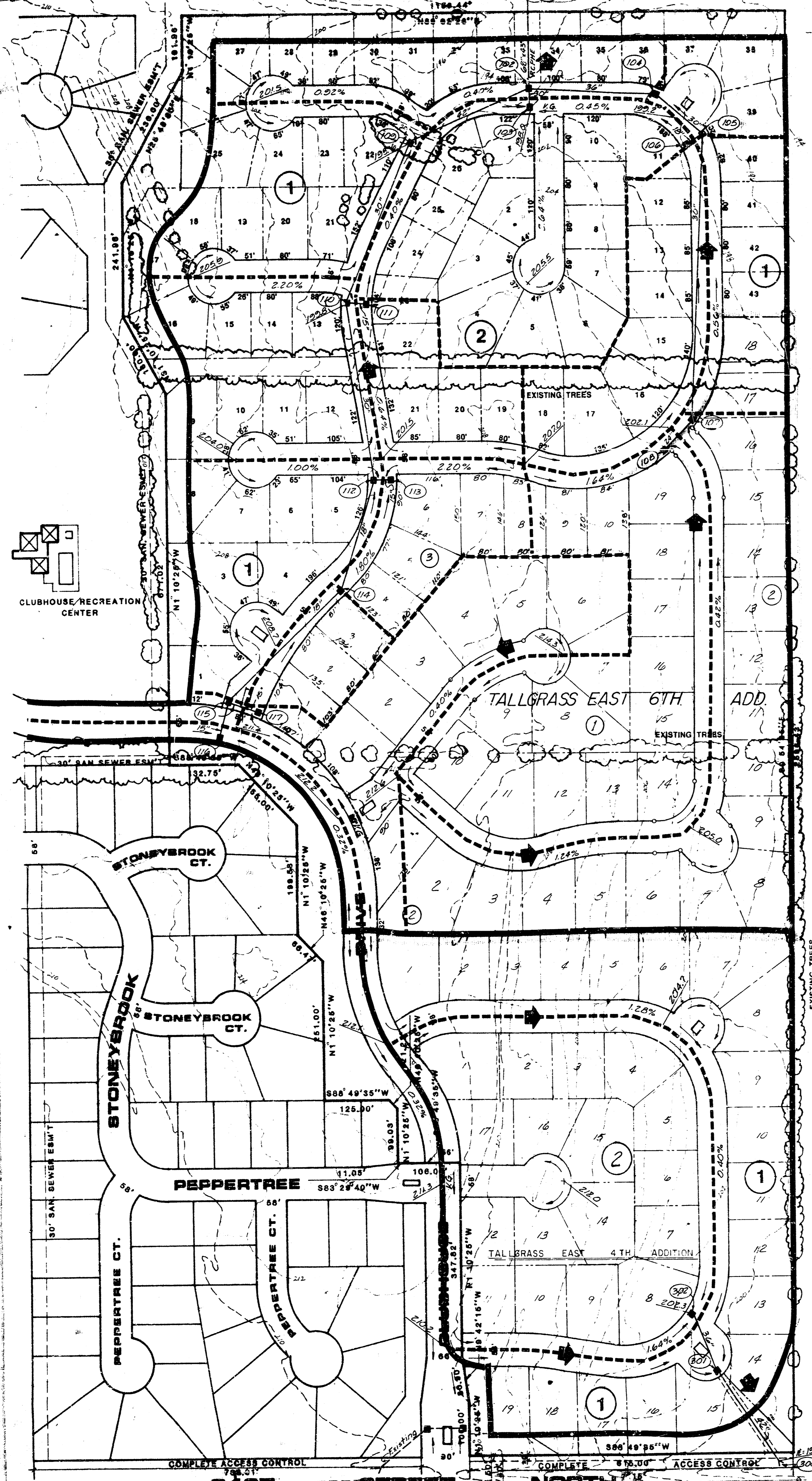
**APPROVED
DRAINAGE PLAN**

DETAILED DRAINAGE PLAN

Proposed Detention Pond,
 Static Pool = 192.0
 DWS₁₀₀ = 196.95

F & F JANSEN ESTATES FARM INC.
 ZONED R-1

N.E. COR. S.W. 1/4,
 SEC. 4, T27S, R2E



CLUBHOUSE/RECREATION CENTER

TALLGRASS EAST 6TH ADD.

STONEBROOK CT.

STONEBROOK CT.

PEPPERTREE CT.

TALLGRASS EAST 4TH ADDITION

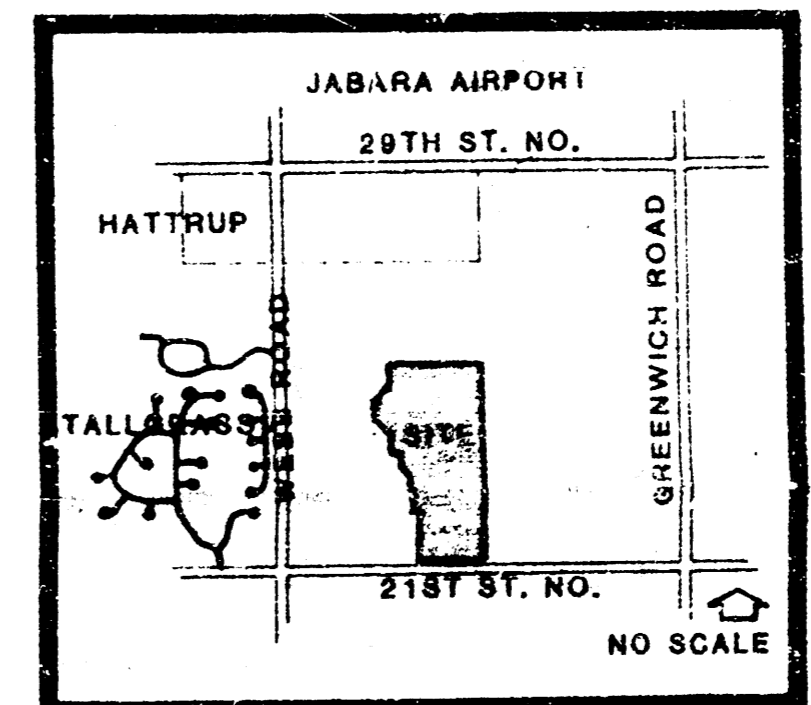
21ST STREET

STREET

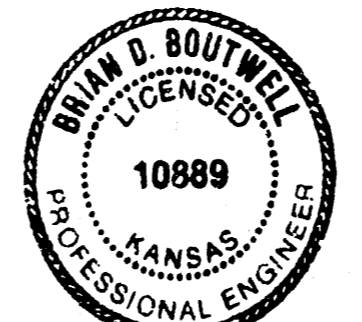
NORTH

HARRY B. CROWN JR. & DIANA KITCH
 ZONED R-1

- LEGEND**
- Drainage Direction - Minor Storm
 - Drainage Direction - Major Storm
 - Proposed Storm Water Sewer & Inlet
 - Proposed Valley Gutter
 - Proposed Top of Curb Elevation
 - Drainage Basin Boundary
 - Drainage Subbasin Boundary
 - (100) Node Identification



LOCATION MAP



DRAINAGE PLAN *CONCEPT*
 3rd, 4th, and 6th Addition

PROFESSIONAL ENGINEERING CONSULTANTS, P.A.
 ENGINEERS
 WICHITA, KANSAS

N
 W E
 S
**APPROVED
 DRAINAGE PLAN**

SCALE: 1" = 100'

TALLGRASS EAST 3RD ADD