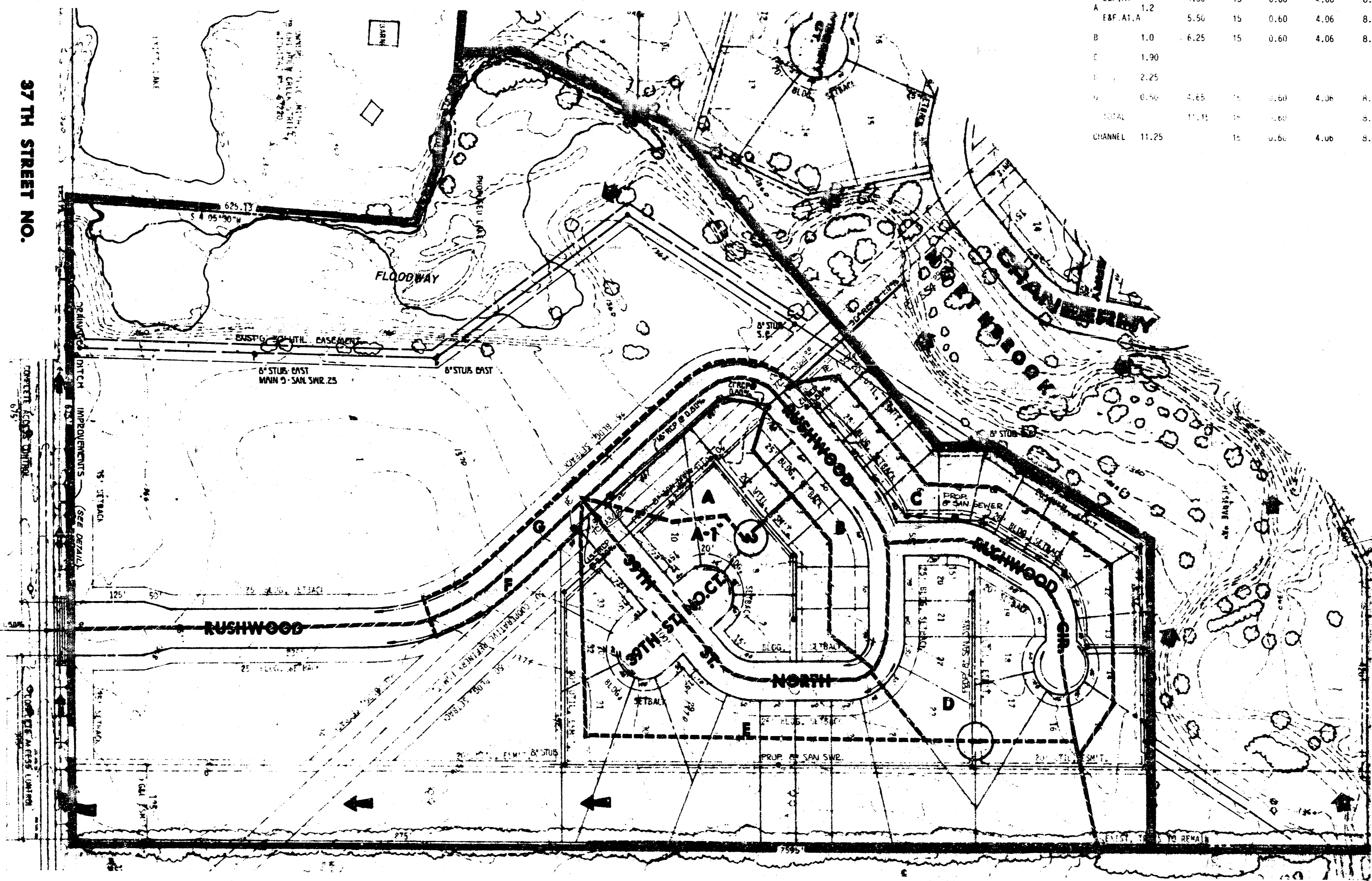
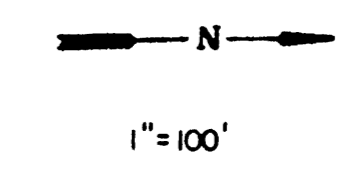


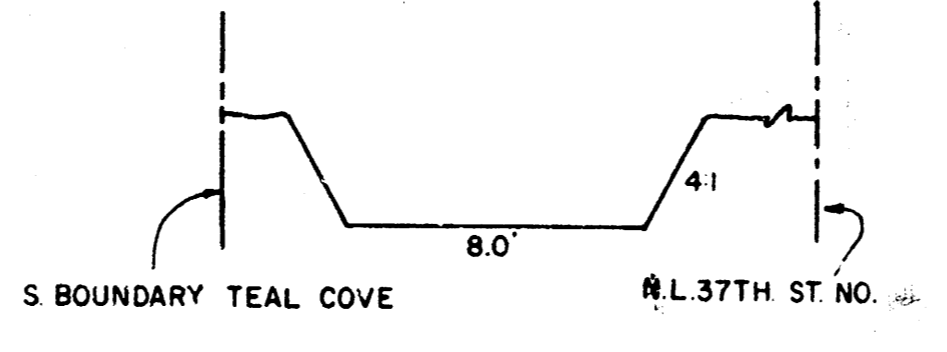
TEAL COVE ADDITION
(Drainage)

NODE	AREA ACRES	AREA ACC.	T.C. MIT.	C	$\frac{1}{2}$	101	Q ₂	Q ₁₀₀	PIPE SIZE	PIPE SLOPE
E	2.15									
F	0.25									
A1	1.9	2.40	15	0.60	4.06	8.98	5.85	12.93	15"	0.50%
A	1.2	4.30	15	0.60	4.06	8.98	10.47	23.17	18"	0.60
A1	1.2	5.50	15	0.60	4.06	8.98	13.40	29.63	21"	0.60
B	1.0	6.25	15	0.60	4.06	8.98	15.23	33.68	21"	0.80
C	1.90									
F	2.25									
N	0.50	2.65	15	0.60	4.06	8.98	11.33	25.05		2 INLTS
TOTAL	11.11								36"	1.00%
CHANNEL	11.25		15	0.60	4.06	8.98	27.41	60.92	2-24"	1.5%



37 TH STREET NO.

TYPICAL CHANNEL DETAIL



NOTE: AN ADEQUATE STORM DRAINAGE SYSTEM SHALL BE INSTALLED AT THE TIME OF DEVELOPMENT OF LOTS 1833, BLOCK 1.



**TEAL COVE
DRAINAGE PLAN**

MID-KANSAS ENGINEERING CONSULTANTS PA
240 NORTH ROCK ROAD
SUITE 130
WICHITA, KANSAS 67206

Design	
Checked by	
Date	
Scale	
Sheet	1
of	1