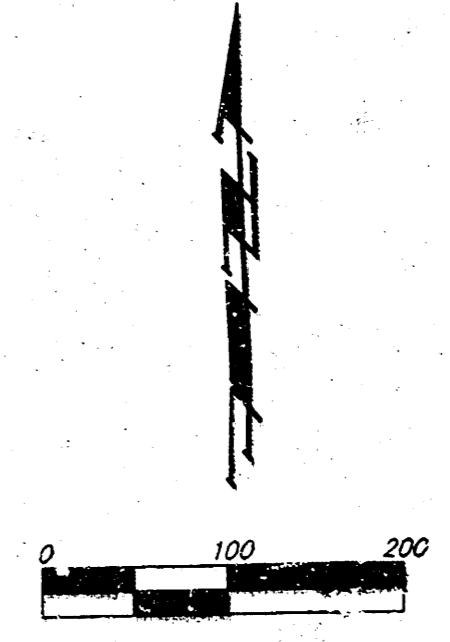
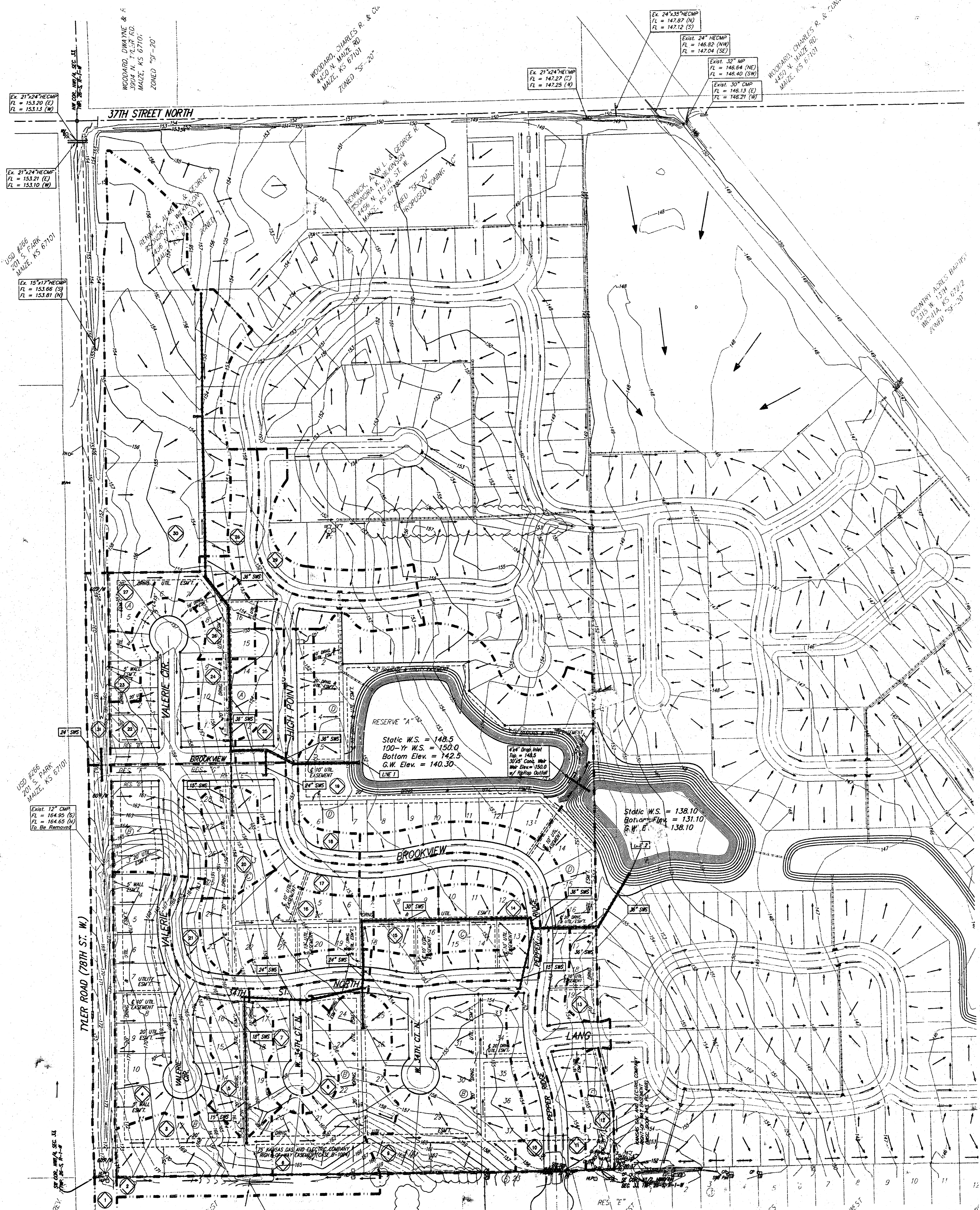


TYLER'S LANDING ADDITION

WICHITA, SEDGWICK COUNTY, KANSAS



* = 4" Diameter Meter (SM)
 o = 3/4" Iron Pipe (FPM)
 □ = 3/4" R.C.C. Iron Pipe (FPM)
 ● = 6" Meter (CROSS)

BENCHMARK:
 CITY OF WICHITA BENCHMARK DISC -
 SE. COR. OF THE INTERSECTION OF TYLER RD. &
 37TH STREET NORTH
 35.80' S. OF B.
 30.00' E. OF P.
 4.80' SE. OF DISC COR. IRON
 ELEV. = 178.04 CITY DATUM
 1.8544 METERS

LOT	BLOCK	CITY DATUM	NOV 2023
2-15	D	1315	1340.9

Tyler's Landing Addition - Rational Method - Q = c/a - tc = 15 min.

Basin	Area	C ₁	C ₂	C ₁₀₀	Q ₁ (cfs)	Q ₂ (cfs)	Q ₁₀₀ (cfs)
1	3.26	0.44	0.46	0.61	5.5	6.8	14.7
2	0.79	0.44	0.46	0.61	1.3	1.7	3.6
3	1.31	0.44	0.46	0.61	2.2	2.7	5.9
4	3.04	0.44	0.46	0.61	5.1	6.4	13.7
5	1.07	0.44	0.46	0.61	1.8	2.2	4.8
6	1.99	0.44	0.46	0.61	3.4	4.2	8.9
7	0.80	0.44	0.46	0.61	1.3	1.7	3.6
8	0.59	0.44	0.46	0.61	0.9	1.0	2.2
9	3.58	0.44	0.46	0.61	6.2	7.7	16.5
10	2.58	0.44	0.46	0.61	4.3	5.4	11.6
11	2.46	0.44	0.46	0.61	4.1	5.2	11.1
12	0.49	0.44	0.46	0.61	0.8	1.0	2.2
13	1.18	0.44	0.46	0.61	2.0	2.5	5.3
14	0.79	0.44	0.46	0.61	1.3	1.7	3.6
15	0.61	0.44	0.46	0.61	1.0	1.3	2.7
16	1.74	0.44	0.46	0.61	2.9	3.6	7.8
17	2.83	0.44	0.46	0.61	4.3	5.3	11.4
18	0.99	0.44	0.46	0.61	1.7	2.1	4.5
19	7.54	0.44	0.46	0.61	12.7	15.8	33.8
20	0.91	0.44	0.46	0.61	1.5	1.9	4.1
21	1.13	0.44	0.46	0.61	1.9	2.4	5.1
22	1.90	0.44	0.46	0.61	3.2	4.0	8.5
23	0.31	0.44	0.46	0.61	0.5	0.7	1.4
24	0.69	0.44	0.46	0.61	1.2	1.4	3.1
25	0.88	0.44	0.46	0.61	1.1	1.4	3.1
26	0.57	0.44	0.46	0.61	1.0	1.2	2.6
27	0.70	0.44	0.46	0.61	1.2	1.5	3.1
28	1.42	0.44	0.46	0.61	2.4	3.0	6.4
29	1.03	0.44	0.46	0.61	1.7	2.2	4.6
30	6.55	0.68	0.69	0.73	17.1	20.6	35.2
31	0.66	0.44	0.46	0.61	1.1	1.4	3.0