

SKETCH PLAT

**UNIVERSAL 3RD ADDITION**

LOT 40, EXCEPT THE EAST 246 FEET THEREOF  
KNIGHT ACRES ADDITION

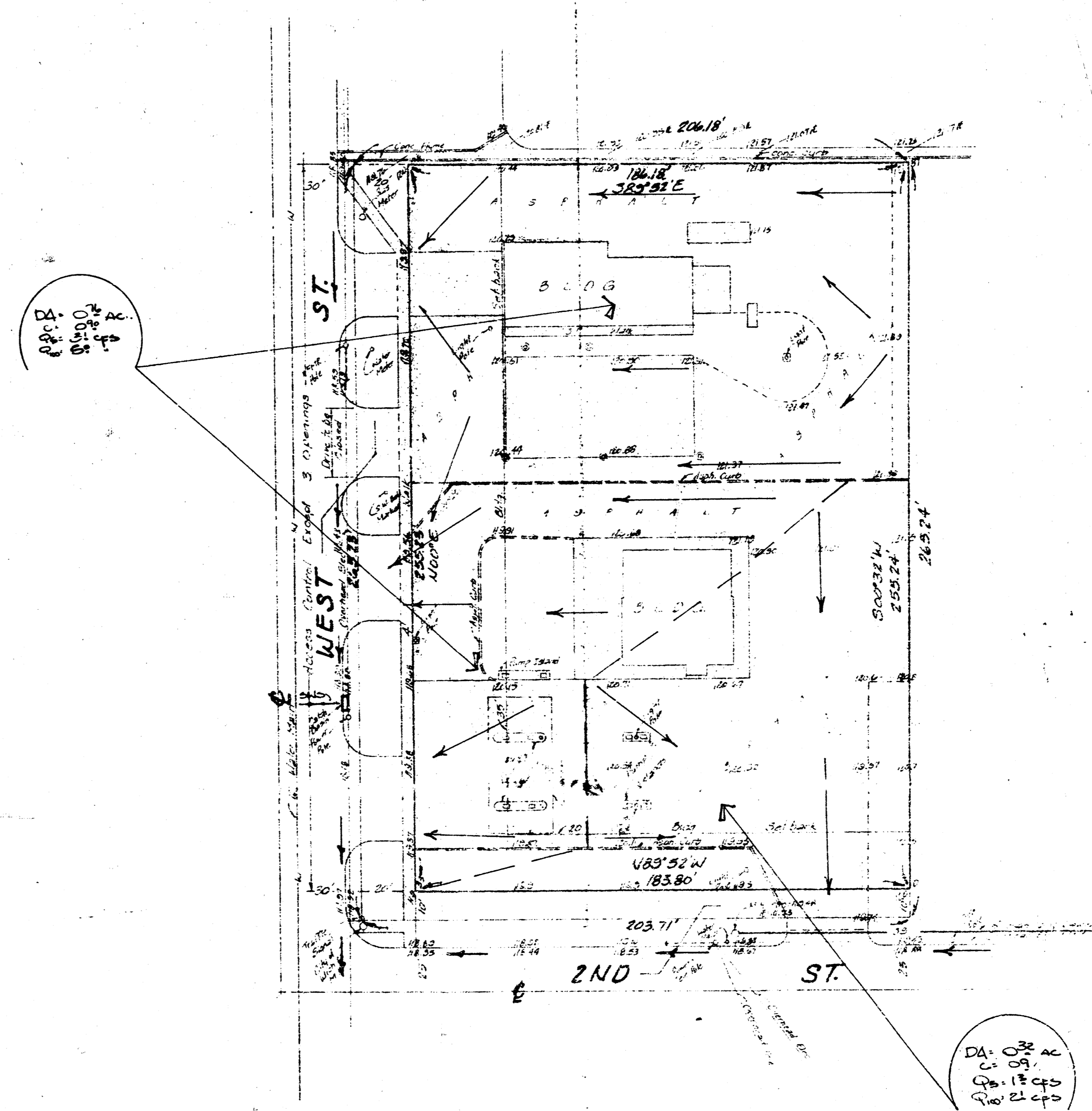
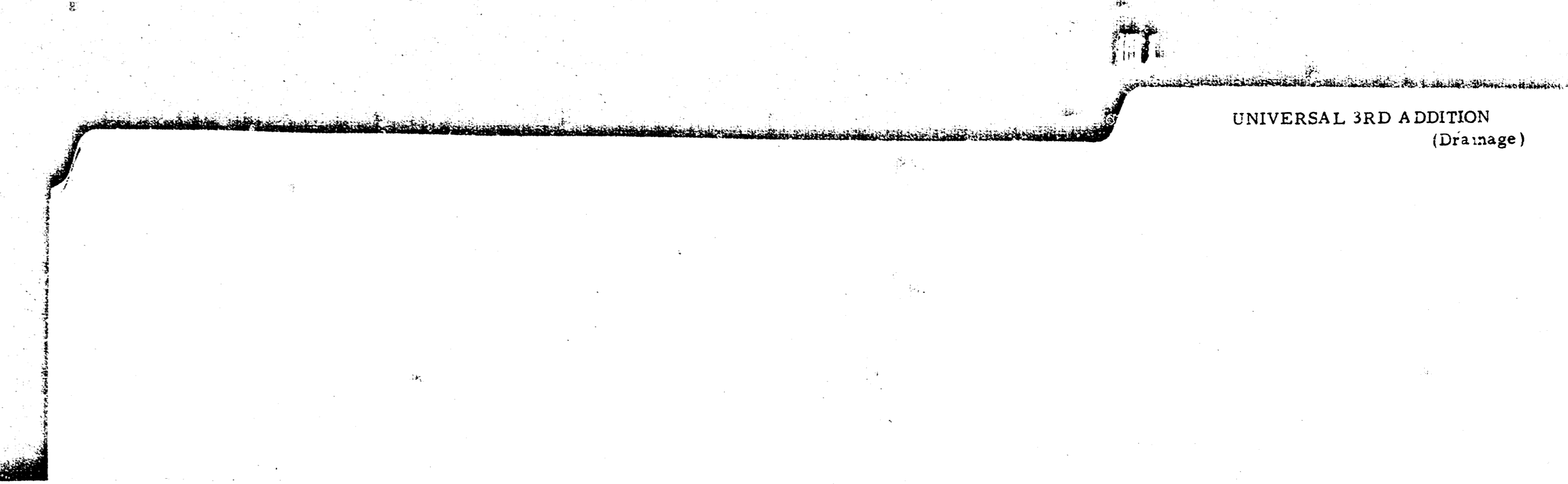
OWNER: UNIVERSAL MOTOR FUELS

**DRAINAGE PLAN**

GENERAL NOTES -

THE LOT WILL DRAIN AS IT DOES PRESENTLY TO THE ADJACENT STREETS. DISCHARGE TO THE STREETS IS THRU DRIVEWAYS AS INDICATED. A STORM SEWER INLET EXISTS ON WEST STREET WHICH REMOVES A PORTION OF THE RUNOFF. OTHER RUNOFF FLOWS ARE CONVEYED SOUTH IN WEST STREET.

**BAUGHMAN COMPANY, P.A.**  
SURVEYING & ENGINEERING  
316 AND 7271 - 315 ELLIS - WICHITA, KANSAS 67211



SKETCH PLAT

**UNIVERSAL 3RD ADDITION**

LOT 40, EXCEPT THE EAST 246 FEET THEREOF  
KNIGHT ACRES ADDITION

OWNER: UNIVERSAL MOTOR FUELS

**DRAINAGE PLAN**

GENERAL NOTES -