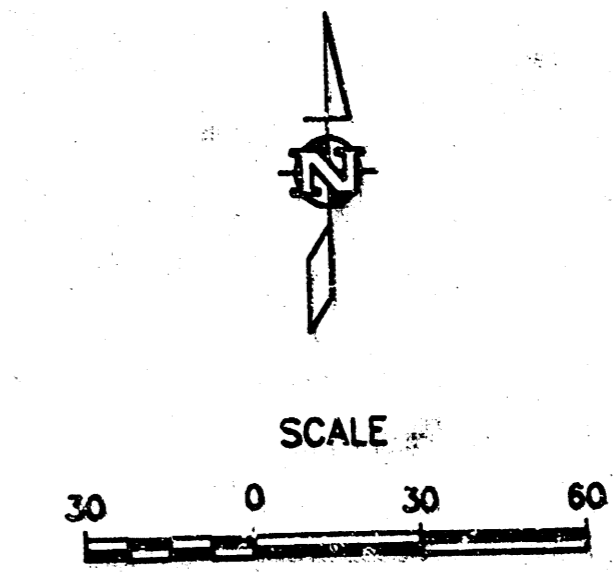


# DRAINAGE PLAN UNIVERSITY & RIDGE ADDITION WICHITA, SEDGWICK COUNTY, KANSAS



## LEGEND

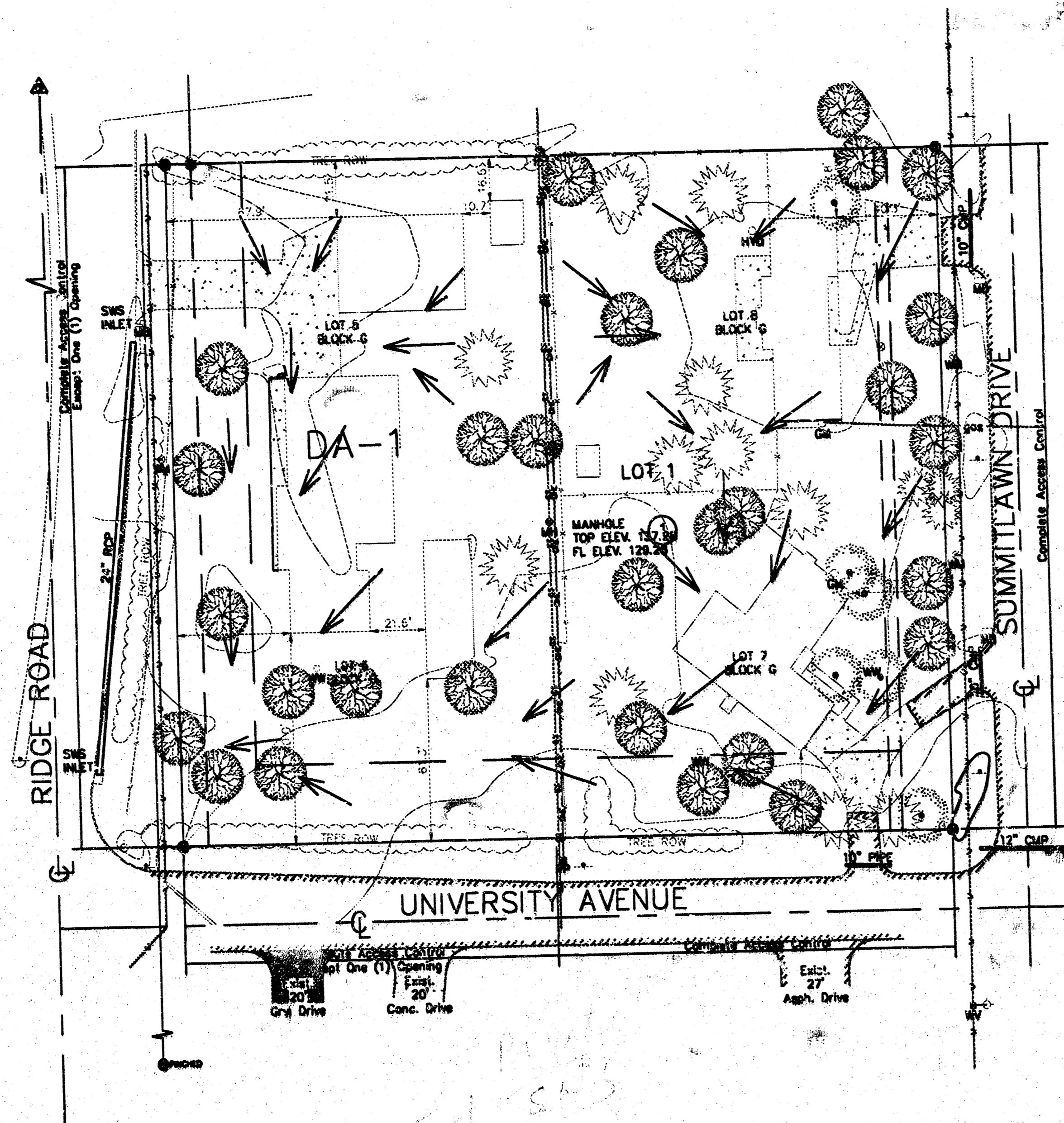
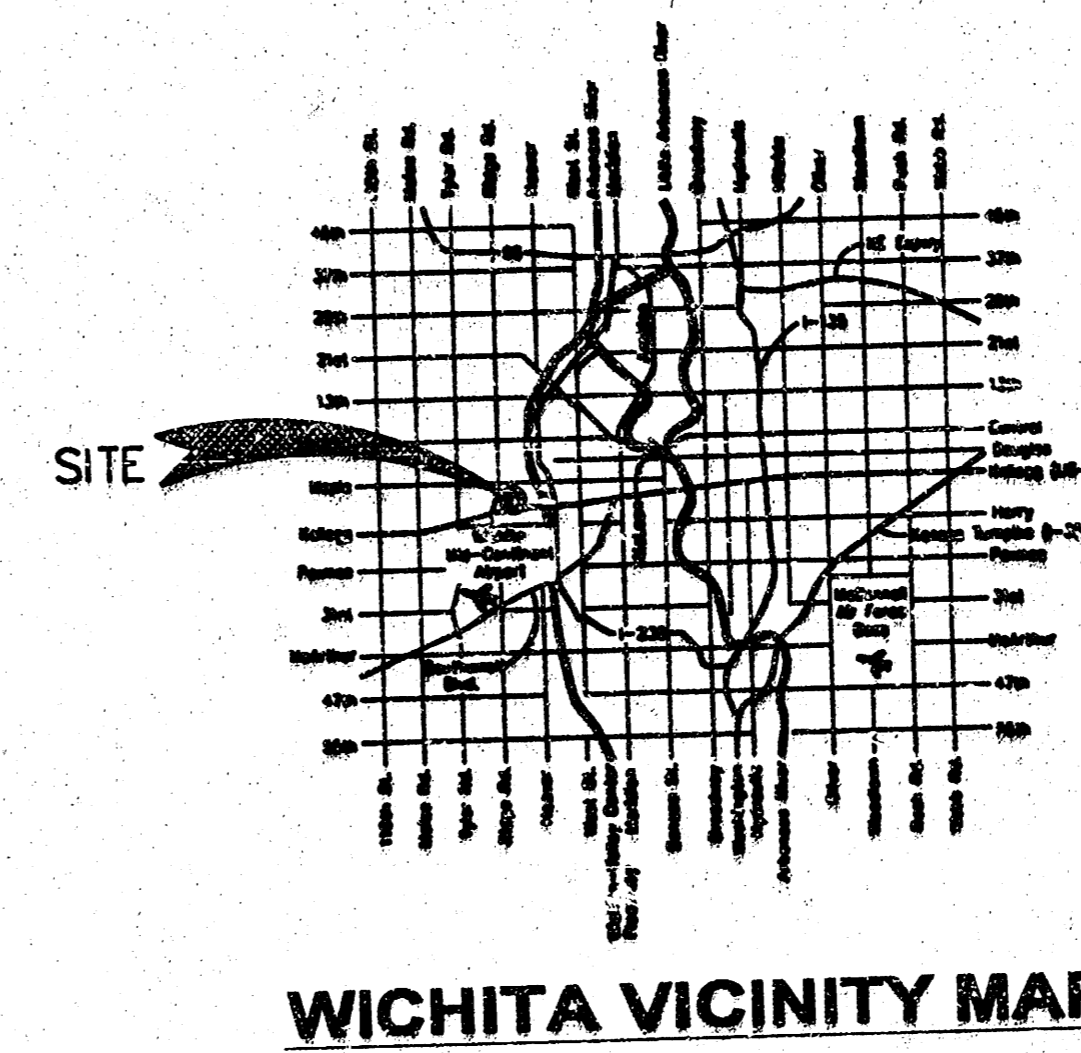
- (C) = Calculated
- (M) = Measured
- (P) = Plotted
- R.O.W. = Right-of-Way
- = 3/4" Iron Pipe
- = 5/8" Rebar AMNC CLS #104
- ▲ = Section Corner
- ▨ = Asphalt
- ☼ = Cedar
- = Concrete
- ~ = Contour Elevation
- ⊙ = Fire Hydrant
- - - = Fence
- GAS — = Gas
- GM = Gas Meter
- HYD = Hydrant
- LP = Light Pole
- MB = Manhole
- MA = Manhole
- CE — = Overhead Electric
- PP = Power Pole
- SS = Sanitary Sewer
- = Shrub
- = Sign
- = Tree
- = Water
- WM = Water Well
- WM = Water Meter
- WV = Water Valve
- YL = Yard Light

Area #	Area	S	L <sub>100</sub>	Undeveloped		Developed	
				Q <sub>100</sub>	Q <sub>100</sub> (ft <sup>3</sup> /hr)	Q <sub>100</sub>	Q <sub>100</sub> (ft <sup>3</sup> /hr)
1	1.87	4.96	2.37	4.4	10.7	6.6	14.6
TOTAL	1.87	4.96	2.37	4.4	10.7	6.6	14.6

### NOTES

1. Determination of Q<sub>100</sub> was made using the rational method. The c<sub>f</sub> used were as follows:  

For Frequency	Undeveloped	Developed
100	0.70	0.60
2. The runoff from the developed site shall be limited to the same C as the undeveloped condition.
3. Drainage area DA-1 shall be served by a private storm sewer installation project.



E:\projects\021\02130\02130-02-drain.dwg Tue Feb 11 13:54:15 2003 Mike Yates

FILENAME: 02130-02.dwg

**WVD CONSULTING**  
**ENGINEERING SERVICES**  
 142 S. Graham - Wichita, KS 67202  
 316-261-2000 - Fax 316-261-2000