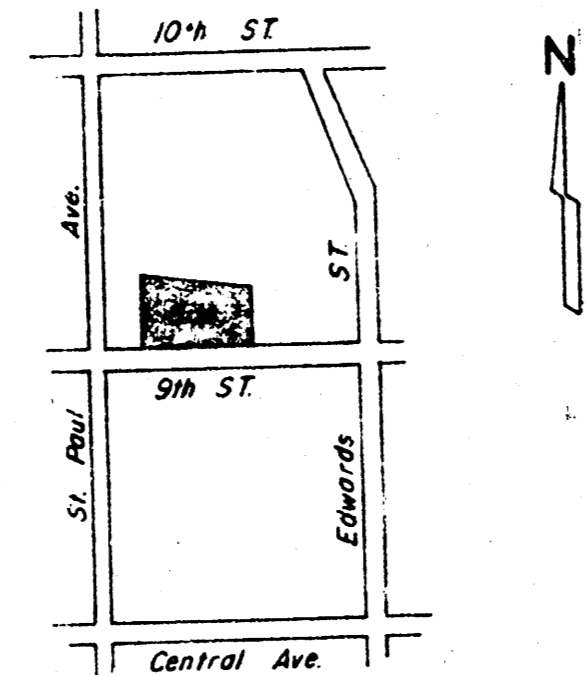


ANDREW WALKER SECOND ADDITION
(Drainage)

VICINITY MAP of ANDREW WALKER SECOND ADDITION To Wichita, Sedgwick Co. Ks.

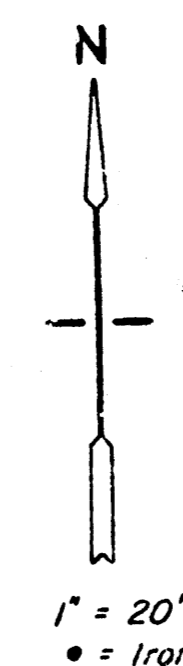


VICINITY MAP

Legal Description -

LOT 17, PARK VISTA ADDITION TO WICHITA, KANSAS, EXCEPT A TRACT DESCRIBED AS BEGINNING AT THE SOUTHWEST CORNER OF SAID LOT 17; THENCE EAST ALONG THE SOUTH LINE OF SAID LOT 17, A DISTANCE OF 68.11'; THENCE NORTH PARALLEL WITH THE WEST LINE OF SAID LOT 17, A DISTANCE OF 84.01' TO A POINT IN THE NORTH LINE OF SAID LOT 17; THENCE WESTERLY 68.16' TO THE NORTHWEST CORNER OF SAID LOT 17; THENCE SOUTH 87.76' TO THE POINT OF BEGINNING.

NOTE: DRAINAGE FROM FUTURE ROOF AND PAVED SURFACES TO BE DIRECTED TO NINTH STREET, VIA DRIVE OPENINGS, FLUMES OR OTHER APPROVED OPENINGS.



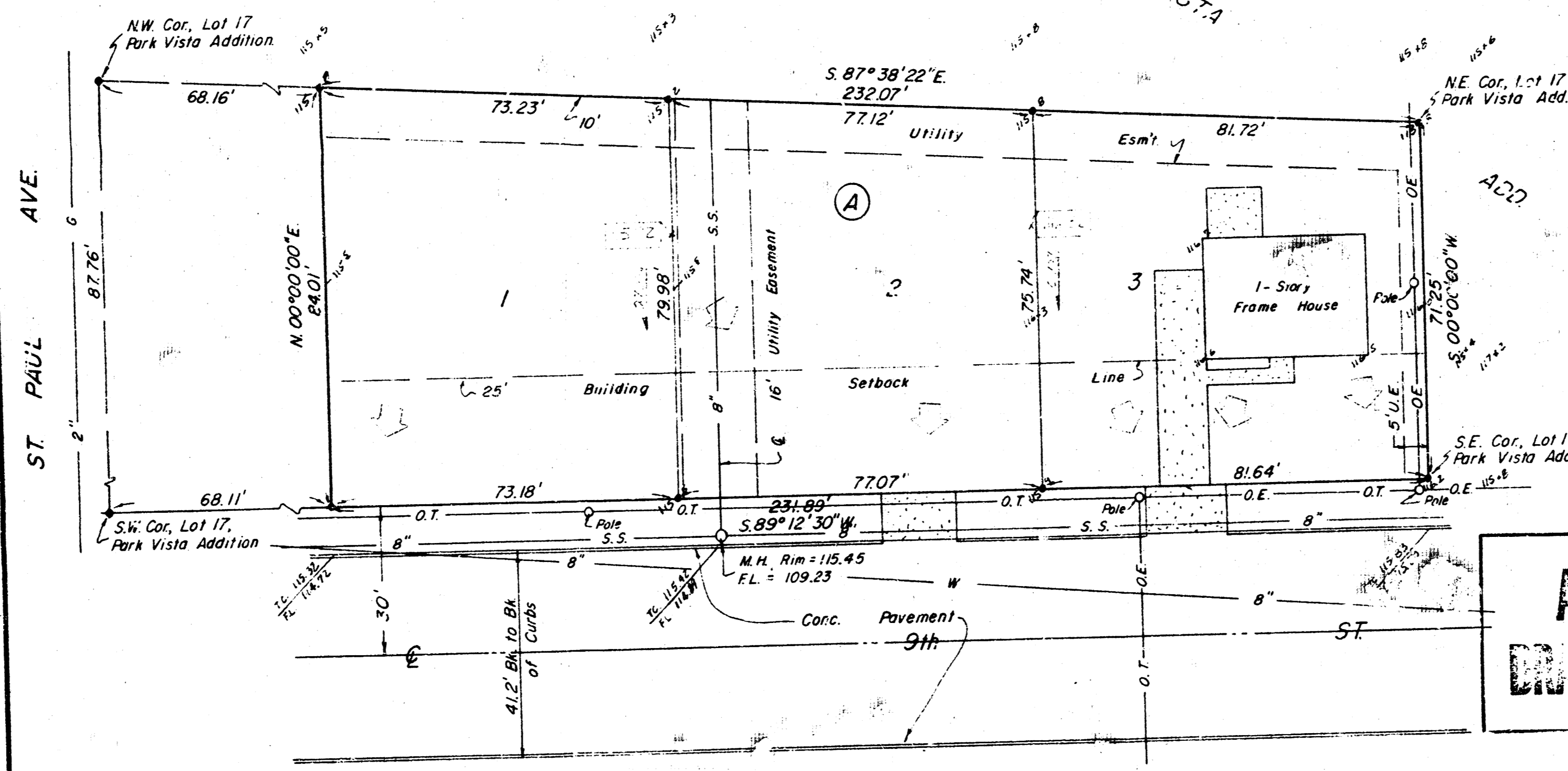
LEGEND -

- W = Water Main
- G = Gas Main
- S.S. = Sanitary Sewer
- O.E. = Overhead Electric
- O.T. = Overhead Telephone
- E = Property Line
- 16.2 = Spot Elevation

BENCHMARK -

1" on top of ball, on N side of base for steel H.L.P. at S.W. Cor. 9th St. & St. Paul Ave. Elev. 117.60 City Datum.

MOEHRING & ASSOCIATES
CONSULTING ENGINEERS
WICHITA
MAY, 1986



**APPROVED
DRAINAGE PLAN**

