

VICINITY MAP

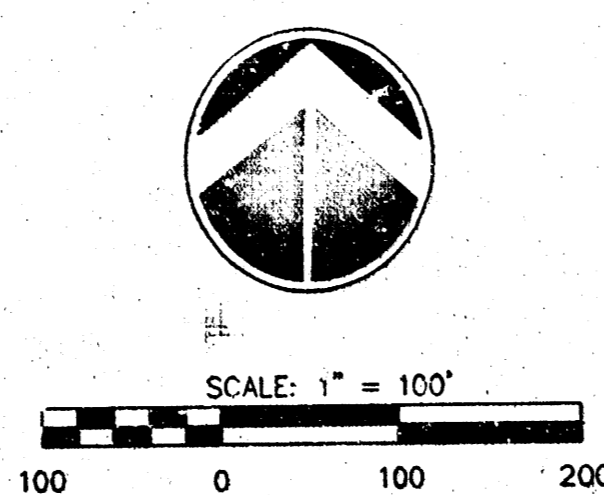
MINIMUM PAD ELEVATIONS (LOWEST OPENINGS)			
LOT	BLOCK	ELEVATION (CITY DATUM)	ELEVATION
1	1		
2	1		
3	1		
4	1		
5	1		
6	1		
7	1		
8	1		
9	1		
1	2		
2	2		

BENCH MARKS

- BM#1 Square cut SE. corner headwall 44' N. and 42' E. of $\frac{1}{4}$ cor., Sec. 9, T27S, R2E ELEV. = 192.73 (CITY DATUM) 1380.13 NGVD
- BM#2 Square cut SW. corner signal light pole base NE. corner Webb and 13th ELEV. = 185.945 (CITY DATUM) 1373.045 NGVD

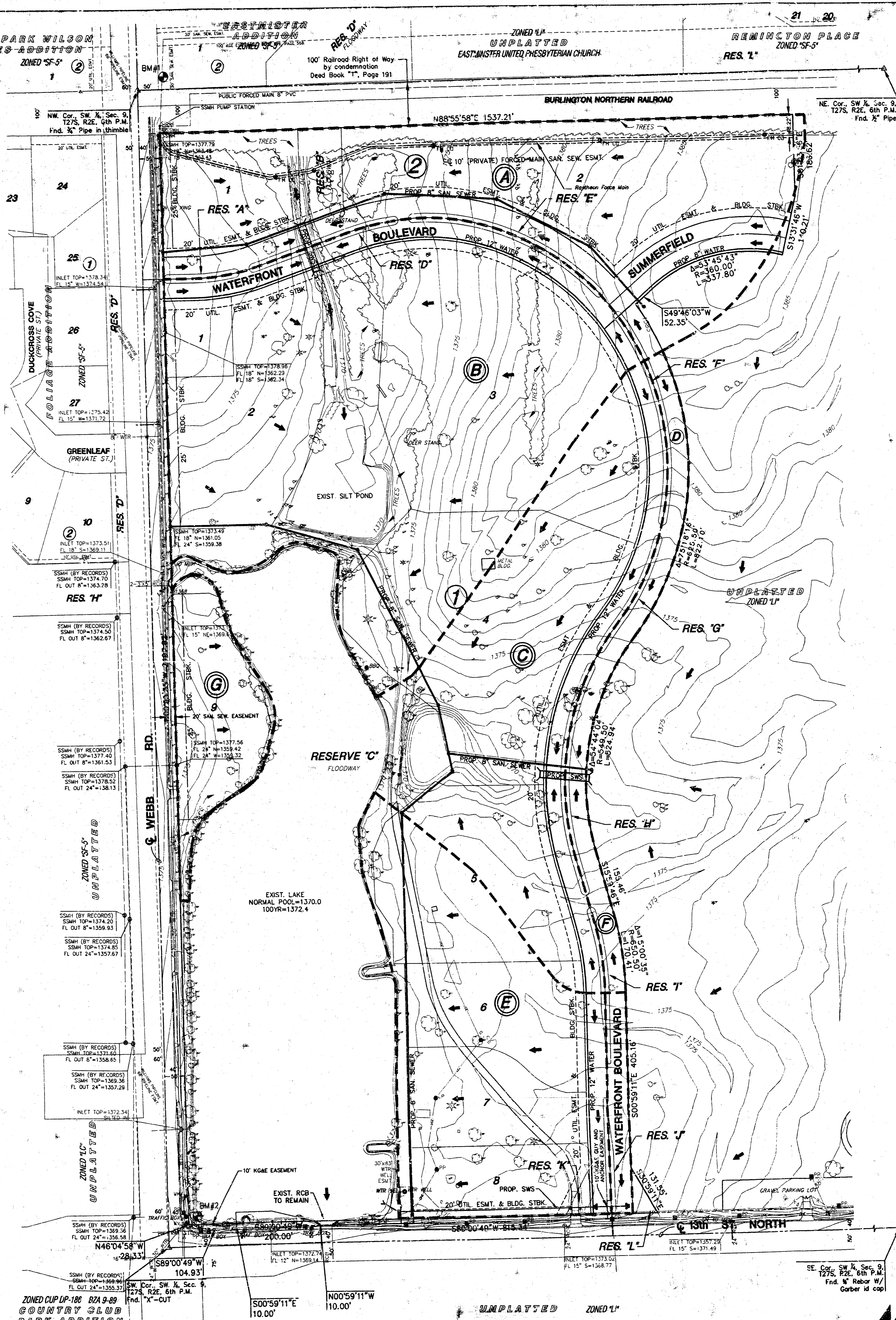
NOTES

- ZONING: Existing Limited Industrial "LI" Proposed Limited Industrial "LI"
- RESERVES platted for:
 - "A", "D", "E", - monuments, landscaping,
 - "F", "G", "H", - irrigation, and open space.
 - "I", "J", "K",
- "B" - drainage, sidewalks, landscaping, irrigation, monuments, and open space.
- "C" - lakes, floodway, and drainage, sidewalks, landscaping, irrigation, berming, monuments, and open space.
- Lot minimum pad elevations as indicated on the DRAINAGE PLAN, provided at the time of FINAL PLATTING.



LEGEND

- CONFEROUS TREE & DIAMETER
- DECIDUOUS TREE & DIAMETER
- SH - SHrub
- BUSH
- EDGE OF TREES
- FENCE
- SSMH - SANITARY SEWER MANHOLE
- GAS METER
- POLE
- HIGH LINE POLE
- GATE
- WALL
- LIGHT POLE
- FIRE HYDRANT
- WATER VALVE
- WATER METER
- POWER POLE AND GUY ANCHOR
- TELEPHONE RISER
- INLET
- STORM SEWER PIPE
- WATER LINE
- SANITARY SEWER LINE
- GAS LINE
- TELEPHONE LINE
- UNDERGROUND ELECTRIC LINE
- OVERHEAD TELEPHONE
- OVERHEAD ELECTRIC
- SECTION CORNER
- PROPERTY CORNER FOUND
- MONUMENT



DRAINAGE AND UTILITY PLAN THE WATERFRONT ADDITION



MKEC
ENGINEERING
CONSULTANTS
111 W. 11th Street
Des Moines, IA 50319