



**MID-KANSAS ENGINEERING
CONSULTANTS, P.A.**
3500 N. Rock Road, #800
Wichita, KS 67226
(316) 636-5566

LETTER OF TRANSMITTAL

PROJECT: Webb Road Development Addition

PROJECT #: _____ DATE: 07/27/01

TO: Vicky Brand, P.E.
City of Wichita
Engineering Department
444 N. Main, 16th Floor
Wichita, KS 67201

We are sending the following items: Attached
 Under separate cover via _____

Prints Specifications Legal Descriptions
 Tracings Petitions Correspondence Other

COMMENTS: 1 - Drainage & Utility plan for Webb Road Development Addition.
 2 - Drainage & Utility plan for East Side Development.

For our Approval As Requested
 For Your Use For Your Files
 Approved as Noted For Review and Comment

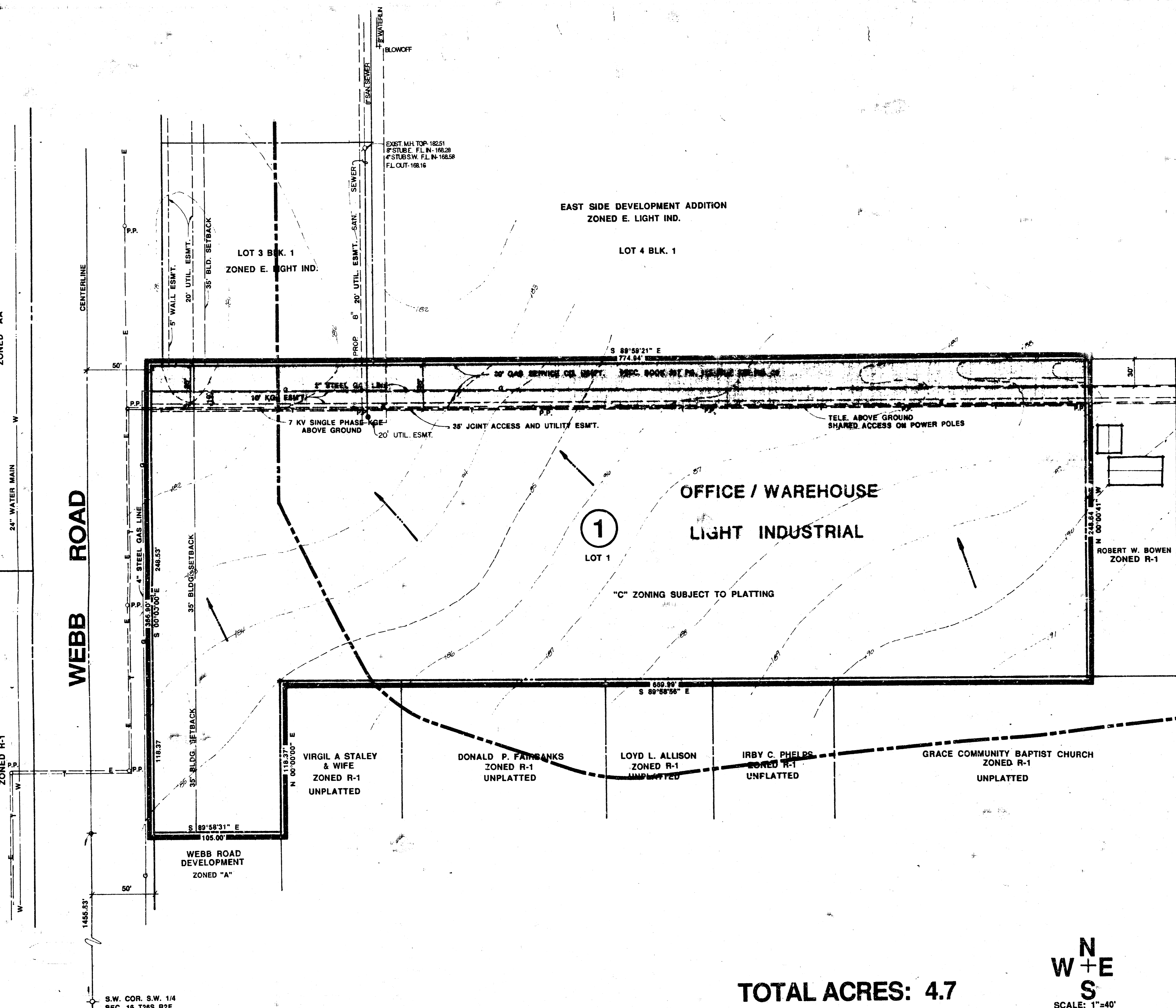
REMARKS:

Signed: Benny Segen
Benny Segen

GATEWOOD 2ND ADDITION
ZONED "AA"

MINNEHA SCHOOL
COMMON SCHOOL DIST. NO. 134
ZONED R-1

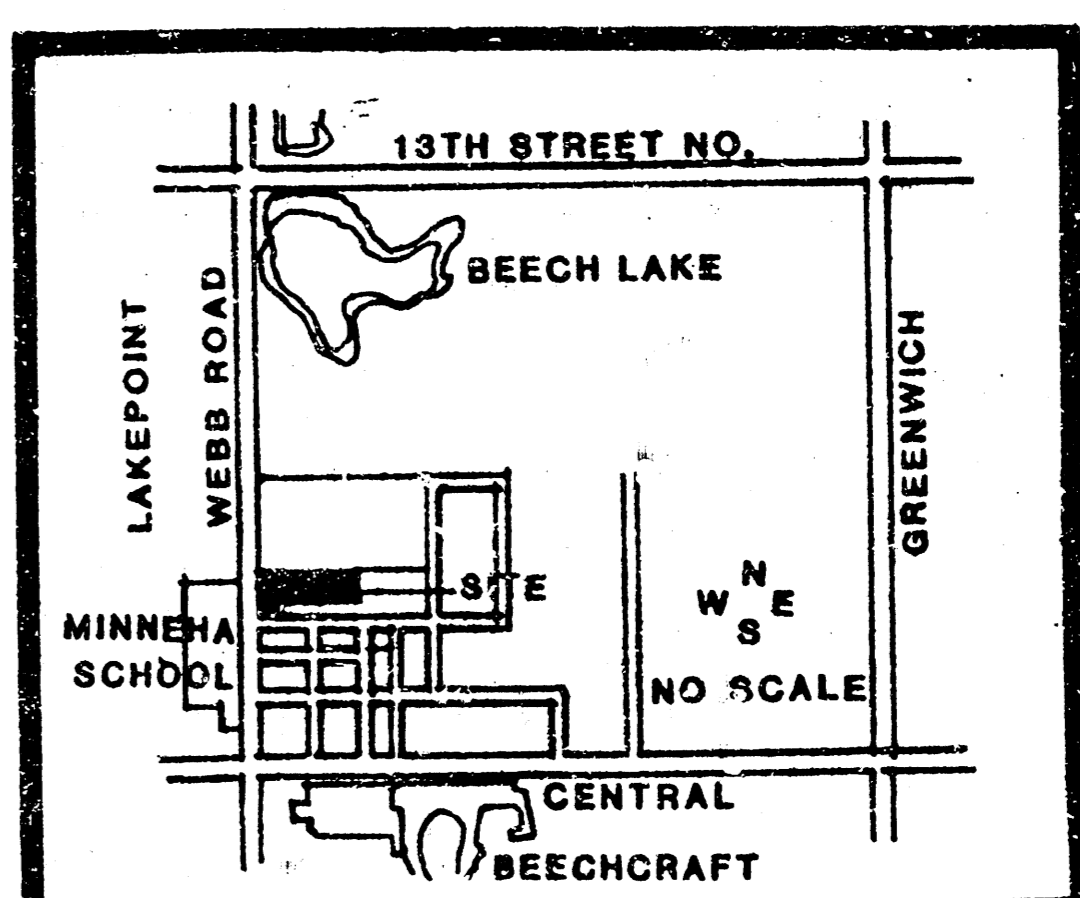
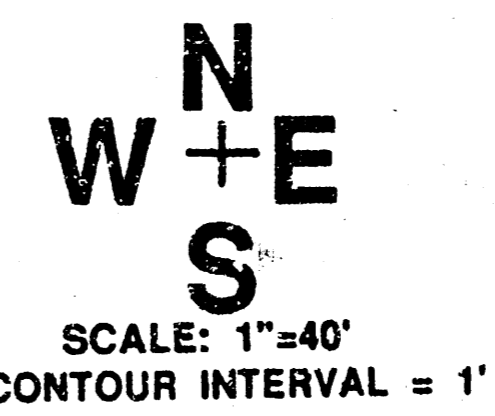
WEBB ROAD



NOTES:

- 1.) BENCHMARK: CITY DISC 34' E. AND 44' S. OF 1/4 SEC. COR. AT 9TH AND WEBB ROAD. ELEV.- 172.96 CITY DATUM.
- 2.) A DRAINAGE CONCEPT PLAN SHALL BE PREPARED AND SUBMITTED BY M.K.E.C.

TOTAL ACRES: 4.7



DRAINAGE & UTILITY PLAN
WEBB ROAD DEVELOPMENT ADDITION

OWNER: WEBB ROAD DEVELOPMENT & LES RUDD, P.O. BOX 782257 WICHITA, KANSAS, 67278 PH. 263-5094

