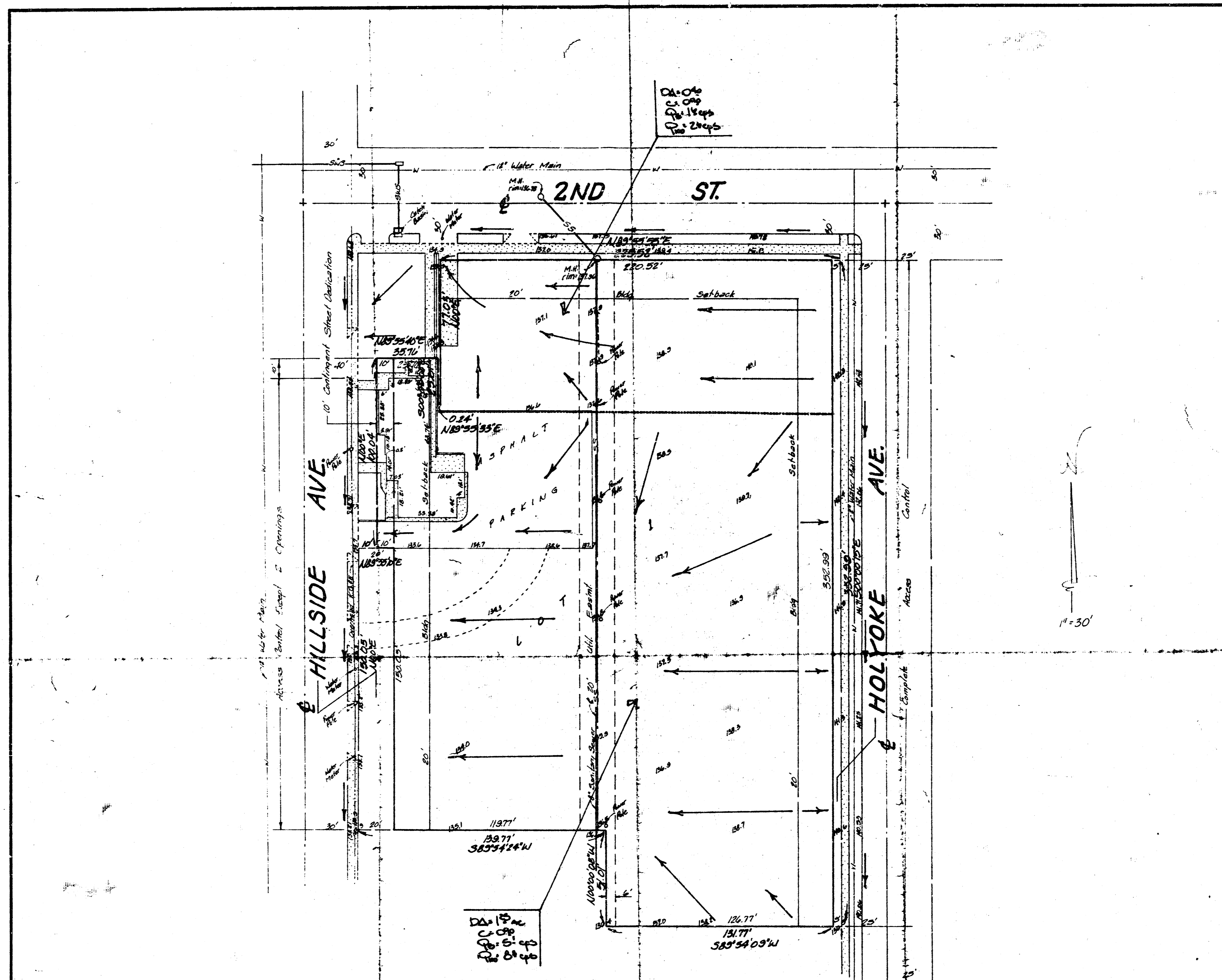


HCA WESLEY ADDITION
(Drainage)



SKETCH PLAT

H C A WESLEY ADDITION

TRACT IN THE NW 1/4 OF SEC 23, TWP 27-S, R-1-E

OWNER: H C A REALTY, INC.
c/o JOHN W. MASSEY,
PRES. OF CESP, INC.

GENERAL NOTES

The site is to be developed into a Medical Center building & parking lot facility. The site will drain as indicated on the plan except that runoff from the site onto Hillside will be limited to only as much as is needed for the undeveloped runoff flow. Detention areas will be developed in the parking lot or other areas to be determined at the time of development of the site as necessary in order to limit the runoff to the existing flow.

DRAINAGE PLAN

25010000 - 12/26/87

RAUSHMAN COMPANY, P.A.
SURVEYING & ENGINEERING
34600-7271 • 215 S. 11th • WICHITA, KANSAS 67211

9 Oct 1987