

DRAINAGE PLAN

WESTSIDE ASSEMBLY CHAPEL ADDITION

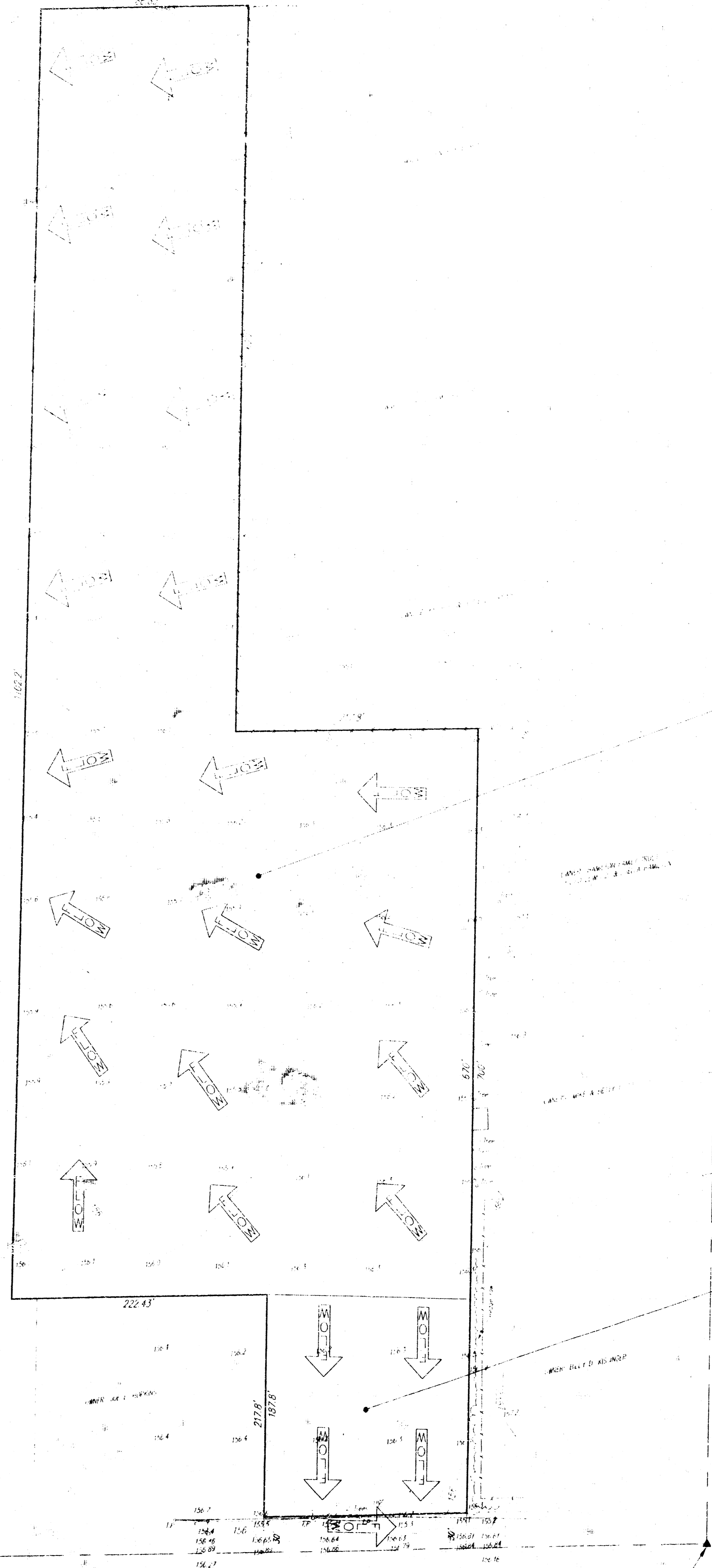
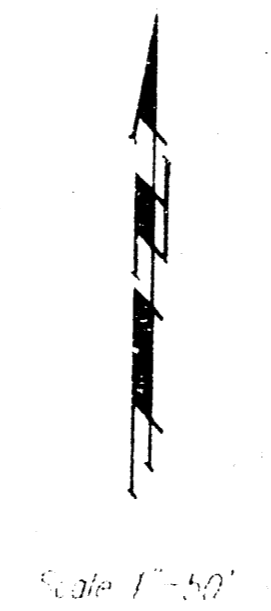
SEDGWICK COUNTY, KANSAS

LEVEL DRAINAGE

Assuming a 0.1% slope of the 1774' x 111' lot 270' x 111' A of the 1774' x 111' lot, a 0.1% slope will be provided to the south line of said 1774' x 111' lot for a distance of 1774' feet. The south line of the lot 1774' x 111' feet will be parallel with the east line of said 1774' x 111' lot. The north line of the lot 1774' x 111' feet will be parallel with the east line of said 1774' x 111' lot. The west line of the lot 1774' x 111' feet will be parallel with the east line of said 1774' x 111' lot. The east line of the lot 1774' x 111' feet will be parallel with the east line of said 1774' x 111' lot.

DRAWN BY

South Englewood, Inc.
Attn: L. B. B. B. B.
2102 S. Englewood
Wichita, Ks. 67211



DRAINAGE AREA = 1.20
 $C = 0.7$
 $Q_s = 257$ cfs
 $Q_{100} = 374$ cfs

DRAINAGE AREA = 0.77
 $C = 0.7$
 $Q_s = 3.8$ cfs
 $Q_{100} = 4.0$ cfs

1774' x 111' A

1774' x 111' A

AUGUST 2, 1994