

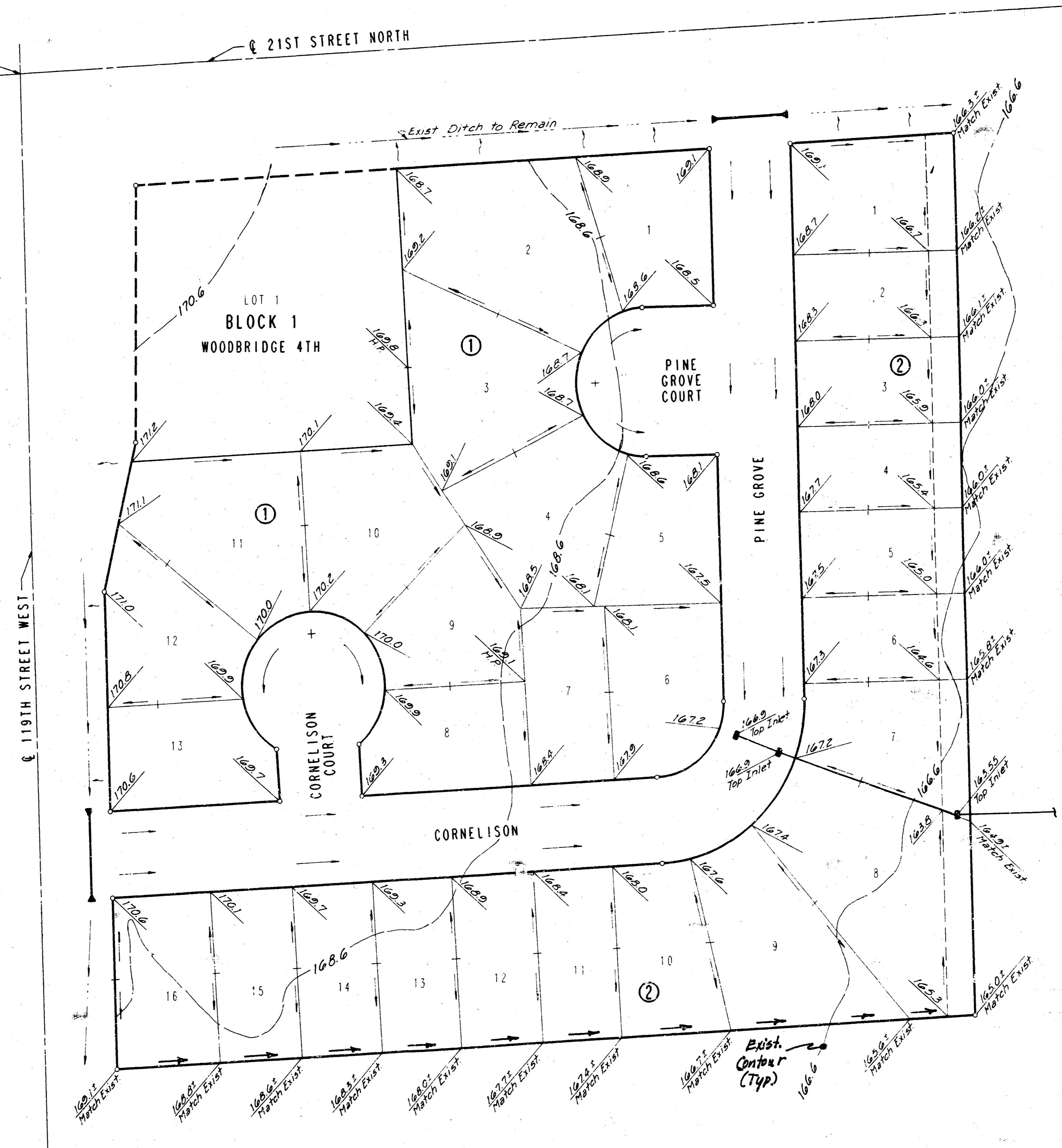
# WOODBIDGE 6TH ADDITION TO WICHITA, SEDGWICK COUNTY, KANSAS

N.W. CORNER  
SEC. 7, T27S, R1W  
OF THE 6TH P.M.

21ST STREET NORTH



SCALE: 1"=50'  
 ○ = IRON SET  
 B.S.L. = BUILDING SETBACK LINE  
 BENCH MARK: CITY OF WICHITA B.M. DISC  
 79 FT. SOUTH OF NORTH LINE  
 SEC. 7, T27S, R1W AND 49 FT.  
 EAST OF 8 119TH ST. WEST  
 ELEV. = 172.08 CITY DATUM  
 ELEV. = 1359.48 M.S.L.



**APPROVED  
DRAINAGE PLAN**

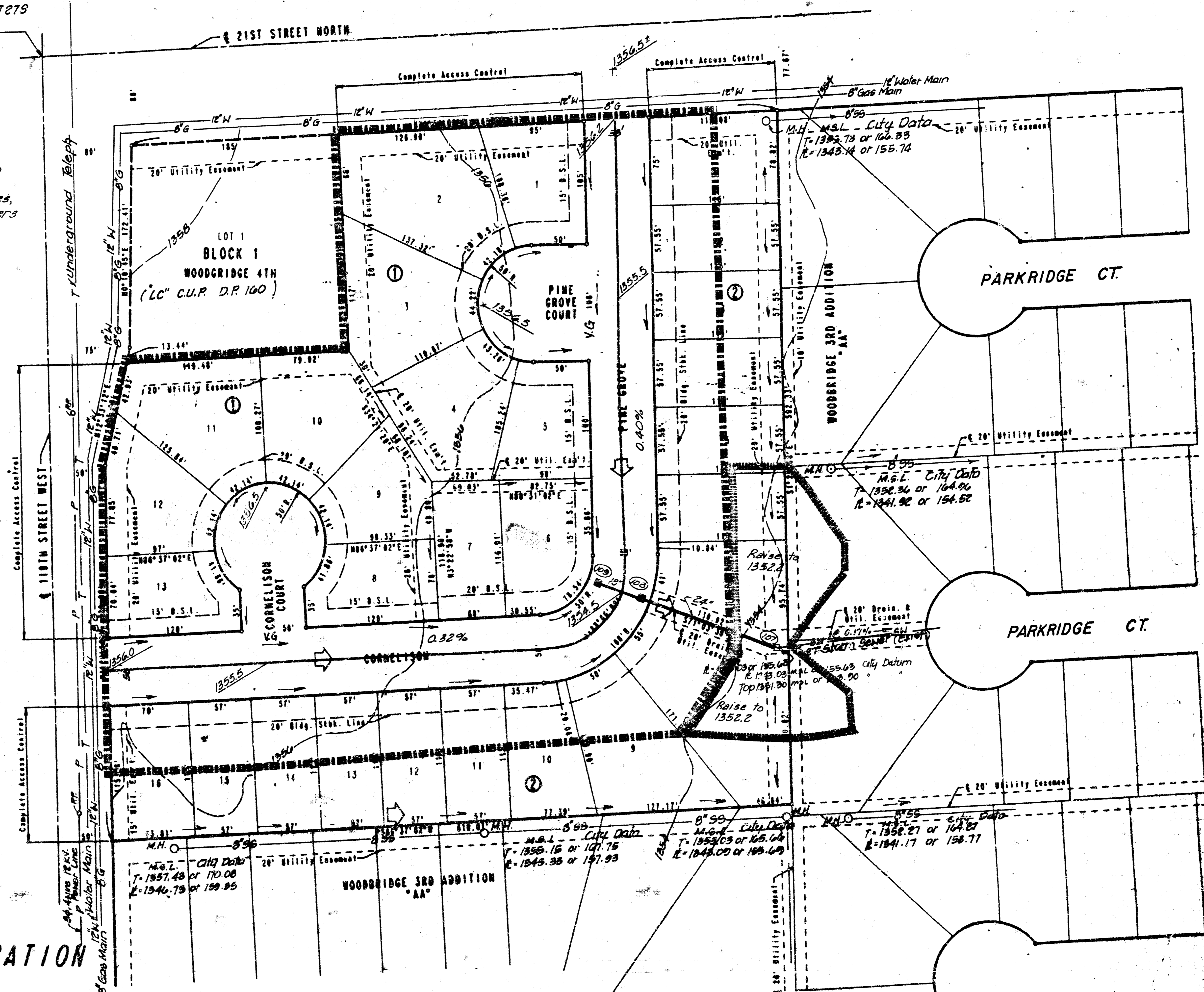
8-19-92

**DETAILED DRAINAGE PLAN**

N.W. Cor. Sec 7, T27S  
R1W of 6th P.M.

Lot 1 shall be graded to  
drain to 119th &/or 21st  
Streets via drives, flumes,  
private storm water sewers  
and/or other approved  
drainage facilities.

SCALE: 1"=50'  
Date of Topo Nov. 1986  
City of Wichita B.M. Dirc. 70 ft.  
So. of North line Sec. 7, T27S, R1W  
& 40 ft. East of & 110th St. West.  
C.I. = 170.00 City Datum  
= 1359.48 m.s.l.  
Date: April the 6th 1992



**DRAINAGE PLAN**  
**WOODBIDGE 6TH ADDITION**

6/5/92

**OWNER/DEV:** SLAWSON INVESTMENT CORPORATION  
C/O LARRY A. CHAMBERS  
104 S. BROADWAY  
WICHITA, KANSAS 67202

**ENGINEER:** PROFESSIONAL ENGINEERING CONSULTANTS, P.A.  
303 S. TOPEKA  
WICHITA, KANSAS 67202

- LEGEND**
- Drainage Direction - Minor Storm
  - ◻ Drainage Direction - Major Storm
  - Proposed Storm Water Sewer
  - - - Drainage Basin Boundary
  - Drainage Sub-Basin Boundary
  - ⊙ Node Identification Point
  - 1355.5 Estimated Future Streets Elevation (MSL)