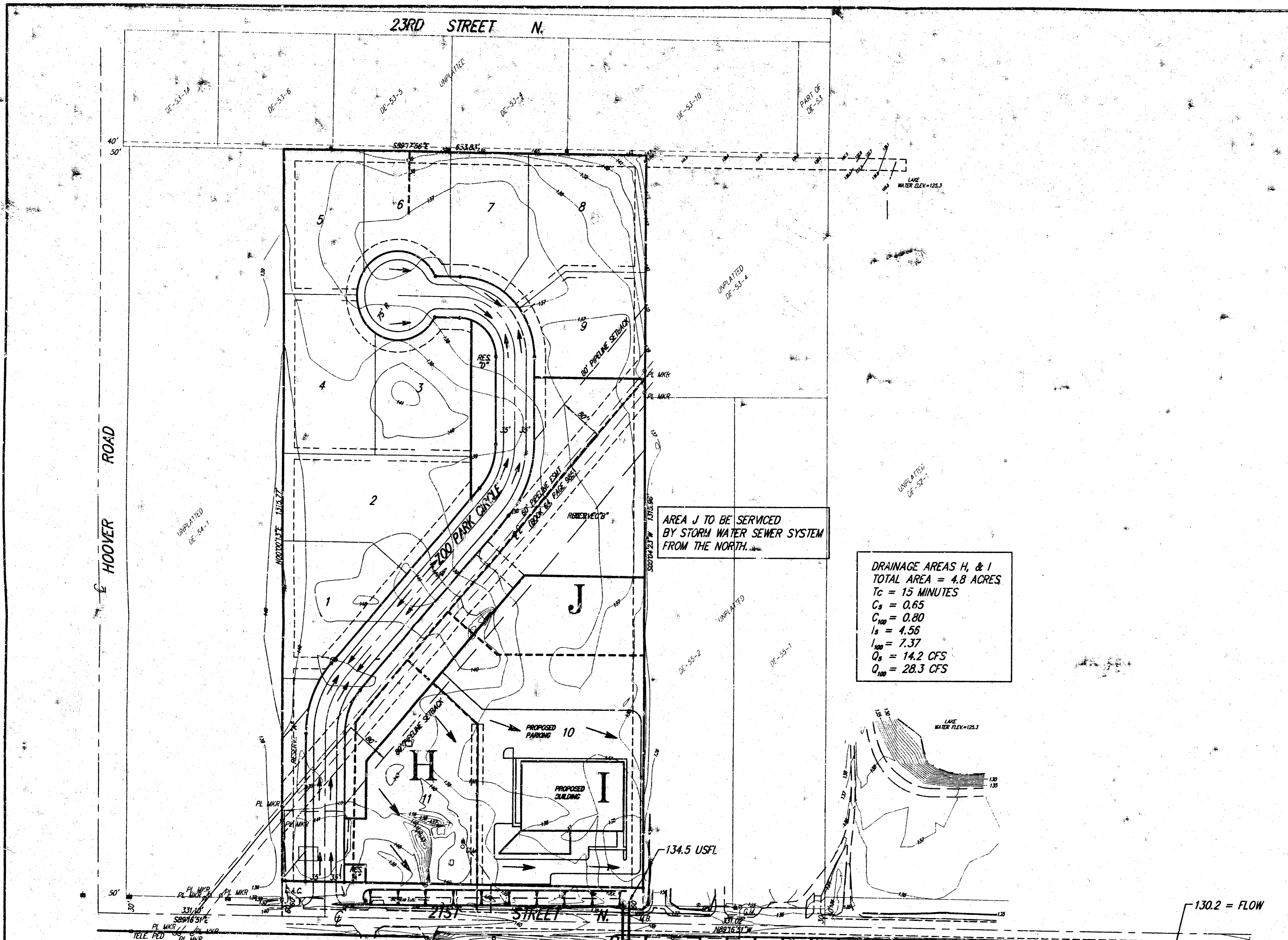


DRAINAGE PLAN ZOO BUSINESS PARK LOTS 10 AND 11 WICHITA, SEDGWICK COUNTY, KANSAS

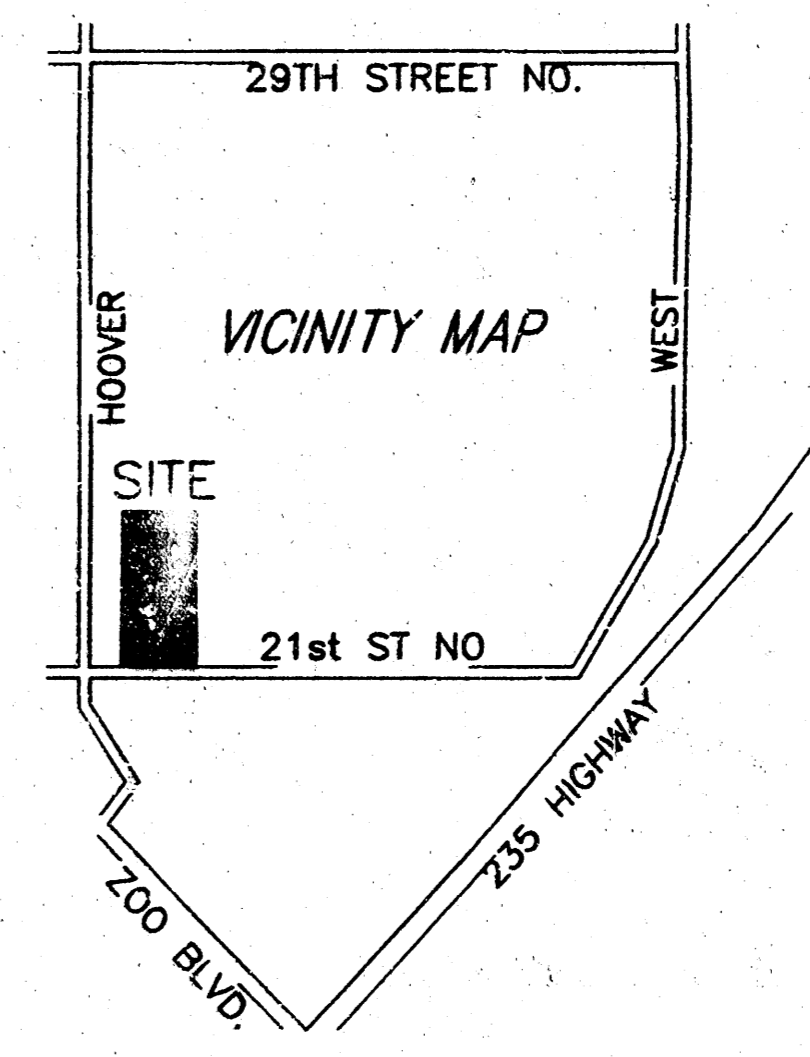
THIS ADDITIONAL DRAINAGE PLAN IS BEING PRESENTED AS AN ALTERNATE DESIGN TO THE FINAL DRAINAGE PLAN. THE ASSUMPTION MADE WITH THIS PLAN IS THAT A DRAINAGE EASEMENT CAN BE SECURED ACROSS THE PROPERTY LOCATED AT THE NORTH LINE, AND EAST OF ZOO BUSINESS PARK, ALLOWING ALL DRAINAGE FROM LOTS (AND PAVEMENT) NORTH OF THE PIPELINE EASEMENT TO DRAIN TO THE ADJACENT SANDPIT.

BECAUSE OF THIS POSSIBILITY, AND DUE TO THE FACT THAT SANITARY SEWER SERVICE IS NOT YET AVAILABLE TO THE PLAT, THIS DRAINAGE PLAN WILL ALLOW LOTS 11 AND 12 TO DRAIN UNDER 21ST STREET NORTH VIA TWO CULVERT PIPES, THEN VIA AN IMPROVED SOUTH DITCH ALONG 21ST STREET NORTH. THE DRAINAGE IS THEN DIRECTED ACROSS THE WICHITA WATER DEPARTMENT PROPERTY VIA A CULVERT PIPE TO THE ON-SITE SAND PIT.

IN THE EVENT THAT A DRAINAGE EASEMENT AND PERMISSION TO DRAIN INTO THE SANDPIT LOCATED IMMEDIATELY EAST OF THE PLAT CANNOT BE OBTAINED, THE PLAT DRAINAGE PLAN WILL GOVERN THE LOTS AND PAVEMENT NORTH OF THE PIPELINE EASEMENT ON-SITE.



DRAINAGE AREAS H, & I
TOTAL AREA = 4.8 ACRES
T_c = 15 MINUTES
C_s = 0.65
C₁₀₀ = 0.80
I_s = 4.56
I₁₀₀ = 7.37
Q_s = 14.2 CFS
Q₁₀₀ = 28.3 CFS



BENCH MARK:
CITY OF WICHITA DISC
48.5' W. & 28.0' N. OF CENTERLINE INTERSECTION
OF HOOVER RD & 21ST STREET N.
ELEV.=139.07 (CITY DATUM)

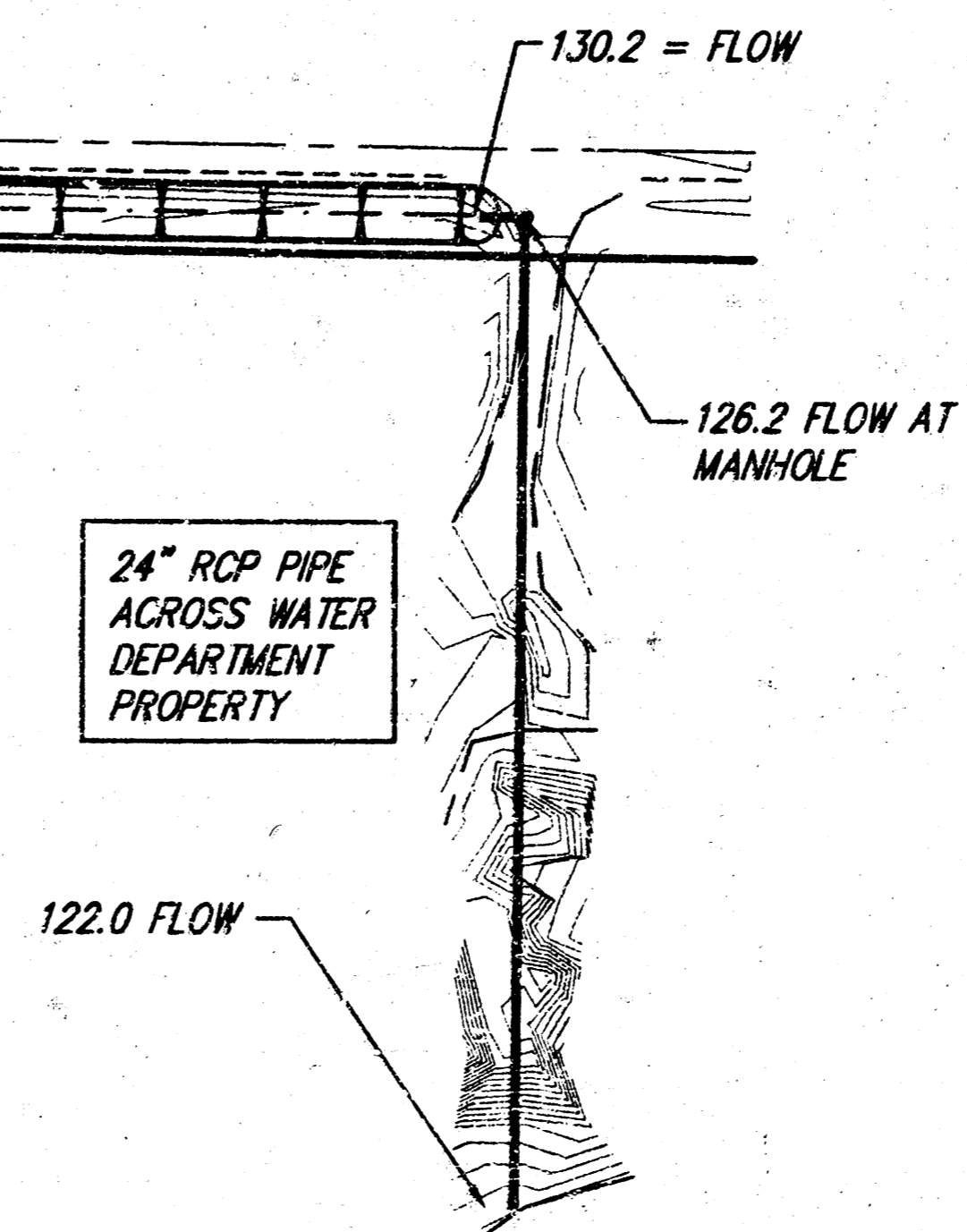
ON SITE B.M.:
RAILROAD SPIKE IN POWER POLE
@ S.W. COR. OF SUBJECT PROPERTY
ELEV.=139.85 (CITY DATUM)

REGRADE NORTH DITCH ALONG
21ST STREET NORTH ACROSS
LOTS 11 AND 10

2 - 18" RCP
CULVERT PIPES

REGRADE SOUTH DITCH OF
21ST STREET NORTH @ 0.40%
V BOTTOM WITH 3:1 SLOPES

24" RCP PIPE
ACROSS WATER
DEPARTMENT
PROPERTY



DRAINAGE PLAN - LOT 10 AND 11 ZOO BUSINESS PARK			
SRB		316-264-8008 FAX 264-4621	
924 NORTH MAIN WICHITA, KANSAS 67203 http://www.srb.com/~srb		E-mail: srb@earth.com	
SAVOY, RUGGLES & BOHM, P. A. ENGINEERING & SURVEYING			
PROJECT NUMBER			
DESIGN C. Bohm	DRAWN C. Bohm	UTILITY	REVIEW
		DATE 7-6-2000	REVISED
			SHEET 1 OF 1