

CITY OF WICHITA, KANSAS

MICHAEL E. LINDEBAK, P.E., CITY ENGINEER

STORM WATER DRAIN NO. 165

IN

REMINGTON PLACE-PHASE 1

CITY OF WICHITA PROJECT NO. 468-76-245-83252-000-000-001

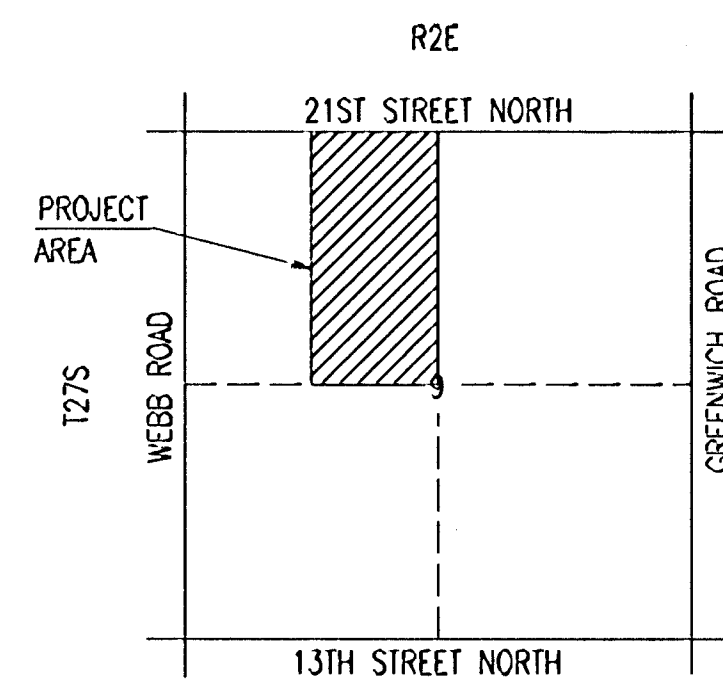
OCA NO. 751302

INDEX OF SHEETS

1. TITLE SHEET
- 2.-3. PLATS
4. POND NO. 1
5. POND NO. 7
6. STORM WATER SEWER OUTFALL
7. TYPE "C" INLET DETAILS
8. FOUR CORNER LOT GRADING PLAN
- 9-21. CROSS SECTIONS

PROJECT SURVEY CONTROL

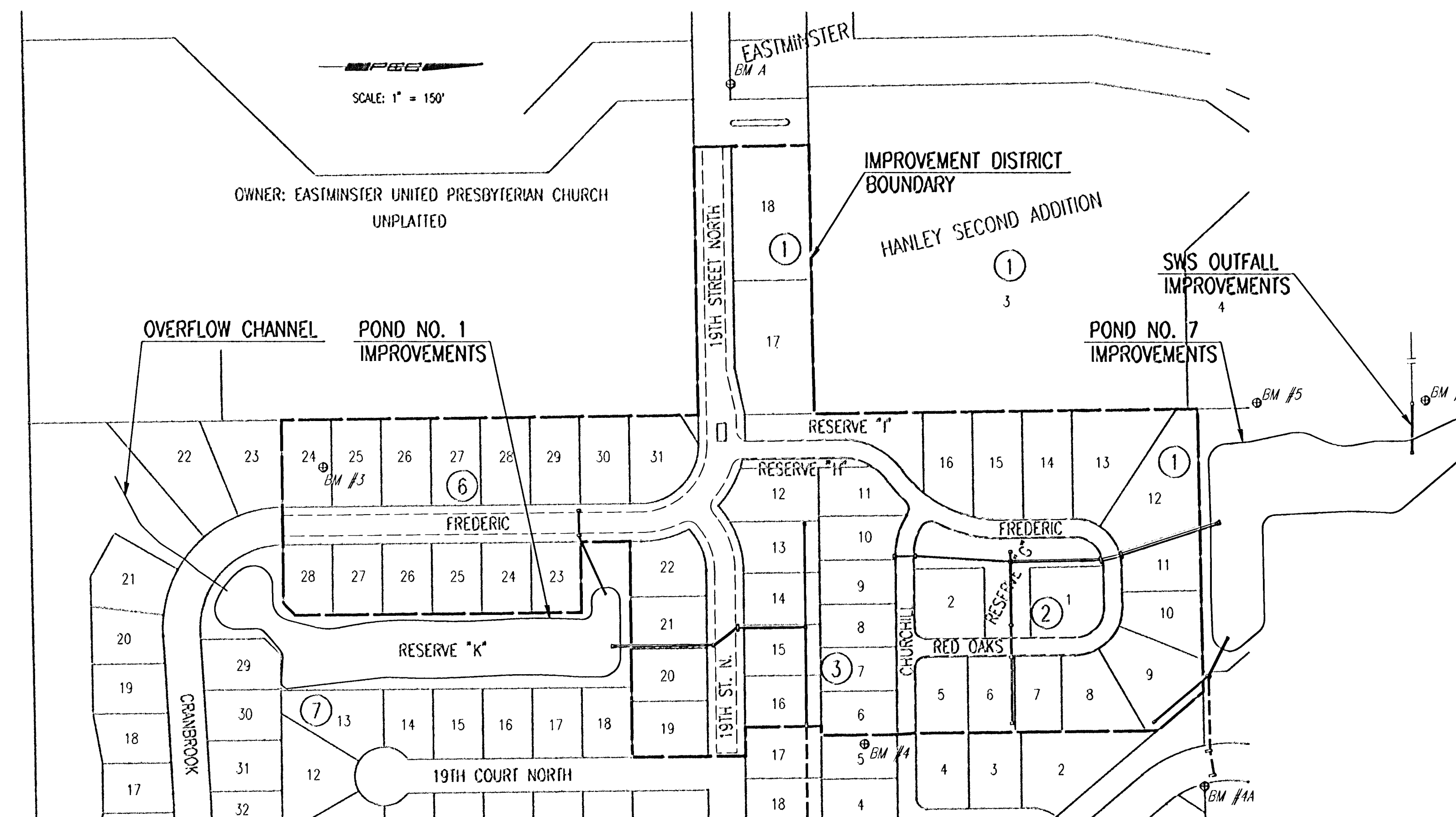
- BM #3** - 1" POST 75' WEST AND 15' SOUTH OF THE SOUTH EAST CORNER OF LOT 25, BLOCK 6, REMINGTON PLACE.
ELEV. = 204.18
- BM #4** - 1" POST 75' NORTH AND 12' EAST OF THE SOUTH EAST CORNER OF LOT 6, BLOCK 3, REMINGTON PLACE.
ELEV. = 210.405
- BM #4-A** - 1" POST 5' EAST OF THE NORTH WEST CORNER OF LOT 1, BLOCK 4, REMINGTON PLACE.
ELEV. = 210.06
- BM "A"** - CHISELED "d" ON THE EAST END OF A RCB HEADWALL ON THE NORTH WEST CORNER OF 19TH STREET AND VINE GATE INTERSECTION.
ELEV. = 193.385
- BM #5** - CHISELED "A" ON THE TOP OF CURB AT THE NORTH EAST CORNER OF A UTILITY SHED, 110' NORTH AND 10.5' WEST OF THE NORTH EAST CORNER OF LOT 12, BLOCK 1, REMINGTON PLACE.
ELEV. = 204.39
- BM #6** - CHISELED "A" ON TOP OF CURB AT THE PI AT THE NORTH EAST CORNER OF THE PARKING LOT OF APARTMENT COMPLEX, 200' SOUTH AND 6.9' WEST OF THE NORTH WEST CORNER OF LOT 1, BLOCK 1, REMINGTON PLACE.
ELEV. = 208.80



VICINITY MAP

EARTHWORK

EXCAVATION	51,758 CU. YDS.
COMPACTED FILL	1,148 CU. YDS.
WASTE-TO BE USED ON SITE FOR STREET CONSTRUCTION	
COMPACTED FILL AND LOT GRADING. SEE PROJECT NO. 472-83375 FOR ADDITIONAL INFORMATION.	50,380 CU. YDS.
PROJECT LENGTH =	N/A LIN. FT.



GENERAL NOTES

UNDERGROUND UTILITY SERVICE LINES AND OVERHEAD UTILITY POLE LINES ARE TO BE ADJUSTED AS NECESSARY BY OTHERS PRIOR TO CONSTRUCTION UNLESS THE PLANS SPECIFICALLY CALL FOR THEIR ADJUSTMENT BY THE CONTRACTOR. EXISTING UTILITIES AND THEIR LOCATION, AS SHOWN ON THE PLANS, REPRESENT THE BEST INFORMATION OBTAINABLE FOR DESIGN. LOCATION INFORMATION HAS BEEN OBTAINED FROM THE VARIOUS UTILITY COMPANIES AND IS EITHER FROM COMPANY RECORD DRAWINGS OR COMPANY PROVIDED FIELD LOCATIONS. THE CONTRACTOR WILL BE REQUIRED TO WORK AROUND EXISTING UTILITIES WITHIN THE RIGHT-OF-WAY WHICH DO NOT CONFLICT WITH PROPOSED CONSTRUCTION.

TREES AND SHRUBS IN PUBLIC RIGHT-OF-WAY WHICH ARE IN DIRECT CONFLICT WITH PROPOSED NEW CONSTRUCTION SHALL BE REMOVED BY THE CONTRACTOR WITH THE ENGINEER'S APPROVAL. TREES AND SHRUBS WHICH ARE NOT IN DIRECT CONFLICT WITH PROPOSED NEW CONSTRUCTION SHALL BE SAVED AND PROTECTED FROM DAMAGE.

RUBBLE FROM THE REMOVAL OF MISCELLANEOUS STRUCTURES SHALL BE DISPOSED OF ON SITES TO BE PROVIDED BY THE CONTRACTOR AND APPROVED AS NOTED BELOW.

ALL DISPOSAL SITES MUST BE APPROVED BY THE KANSAS DEPARTMENT OF HEALTH AND ENVIRONMENT. MATERIAL EITHER STOCKPILED OR DISPOSED OF IN A FLOOD PLAIN WOULD REQUIRE A KANSAS STATE BOARD OF AGRICULTURE PERMIT. ANY MATERIAL DUMPED IN WATERS OF THE UNITED STATES OR WETLANDS IS SUBJECT TO U.S. CORPS OF ENGINEERS PERMITTING REGULATIONS. ANY MATERIAL BURIED OR STOCKPILED BEYOND APPROVED CONSTRUCTION LIMITS WOULD REQUIRE ADDITIONAL ARCHEOLOGICAL INVESTIGATIONS UNLESS BURIED IN A PREVIOUSLY APPROVED BORROW LOCATION.

CONTRACTOR SHALL SATISFY HIMSELF OF SURFACE AND SUBSURFACE CONDITIONS PRIOR TO BIDDING.

TEMPORARY SURFACING MATERIAL (ROCK, ASPHALT, ETC.) MAY HAVE BEEN PLACED WITHIN STREET RIGHTS-OF-WAY FOR HAUL ROADS AND TEMPORARY ACCESS. CONTRACTOR SHALL FIELD VERIFY EXISTING CONDITIONS TO DETERMINE EXTENT, IF ANY, OF SUCH SURFACING. CONTRACTOR SHALL REMOVE SAID TEMPORARY SURFACING IN THE SAME MANNER AS NOTED ABOVE FOR RUBBLE. THIS REMOVAL SHALL BE SUBSIDIARY TO "EXCAVATION".

CONTRACTOR SHALL PROVIDE A MINIMUM FORTY-EIGHT (48) HOUR ADVANCE NOTICE (EXCLUDING WEEKENDS AND HOLIDAYS) PRIOR TO BEGINNING ANY EXCAVATION, TO KANSAS ONE-CALL SYSTEM, A UTILITY LOCATION SERVICE, AT (316) 687-2470 TO REQUEST THE FOLLOWING UTILITY COMPANIES TO LOCATE ALL EXISTING LINES WITHIN THE PROJECT AREA: K.G.S. GAS, PEOPLES NATURAL GAS, K.G.E. ELECTRIC, SOUTHWESTERN BELL TELEPHONE, COX COMMUNICATIONS, CITY OF WICHITA SEWER MAINTENANCE AND CITY OF WICHITA WATER DEPARTMENT.

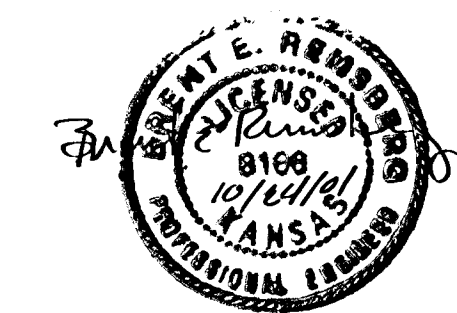
THE CONTRACTOR SHALL BE RESPONSIBLE FOR PRESERVING PROPERTY IRONS. THE CONTRACTOR WILL BE REQUIRED TO RE-ESTABLISH ANY PROPERTY IRONS WHICH ARE DAMAGED OR DESTROYED BY HIS CONSTRUCTION OPERATIONS. SUCH IRONS SHALL BE RE-ESTABLISHED BY A LICENSED LAND SURVEYOR IN ACCORDANCE WITH STATE LAWS.

THE WATER DEPARTMENT SHALL FIELD LOCATE WATER VALVES ONE TIME DURING CONSTRUCTION WHEN REQUESTED BY THE CONTRACTOR. IT SHALL BE THE CONTRACTOR'S RESPONSIBILITY TO PRESERVE SUCH FIELD LOCATIONS DURING THE CONSTRUCTION PROCESS. WATER VALVES, WATER VALVE BOXES OR FIRE HYDRANTS DAMAGED DURING CONSTRUCTION SHALL BE REPAIRED BY THE CONTRACTOR AT HIS OWN EXPENSE.

THE CONTRACTOR SHALL ADJUST WATER VALVE BOXES AS DIRECTED BY THE ENGINEER. THIS WORK TO BE SUBSIDIARY TO OTHER BID ITEMS.

THIS PROJECT DOES NOT INCLUDE ANY PROVISIONS FOR CONSTRUCTION OF DRIVEWAYS.

THE CONTRACTOR SHALL APPLY TEMPORARY SEED AND MULCH TO ALL UNPAVED AREAS WITHIN THE LIMITS OF THE IMPROVEMENTS DISTRICT BOUNDARY AND ON-SITE AREAS FILLED OUTSIDE THE IMPROVEMENT DISTRICT BOUNDARY DISTURBED BY THE CONSTRUCTION OPERATIONS OF C.O.W. PROJECT NO. 83252 AND 83375 IN ACCORDANCE WITH THE CITY OF WICHITA SPECIFICATIONS. THIS WORK SHALL BE PAID FOR AT THE CONTRACT LUMP SUM PRICE BID FOR "PROJECT SEEDING".



OCTOBER 2001

PLANS PREPARED BY
PROFESSIONAL ENGINEERING CONSULTANTS, P.A.
ENGINEERS
WICHITA, KANSAS