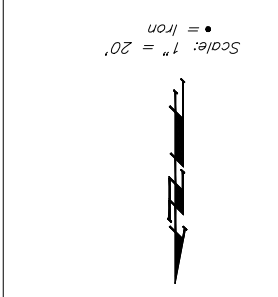
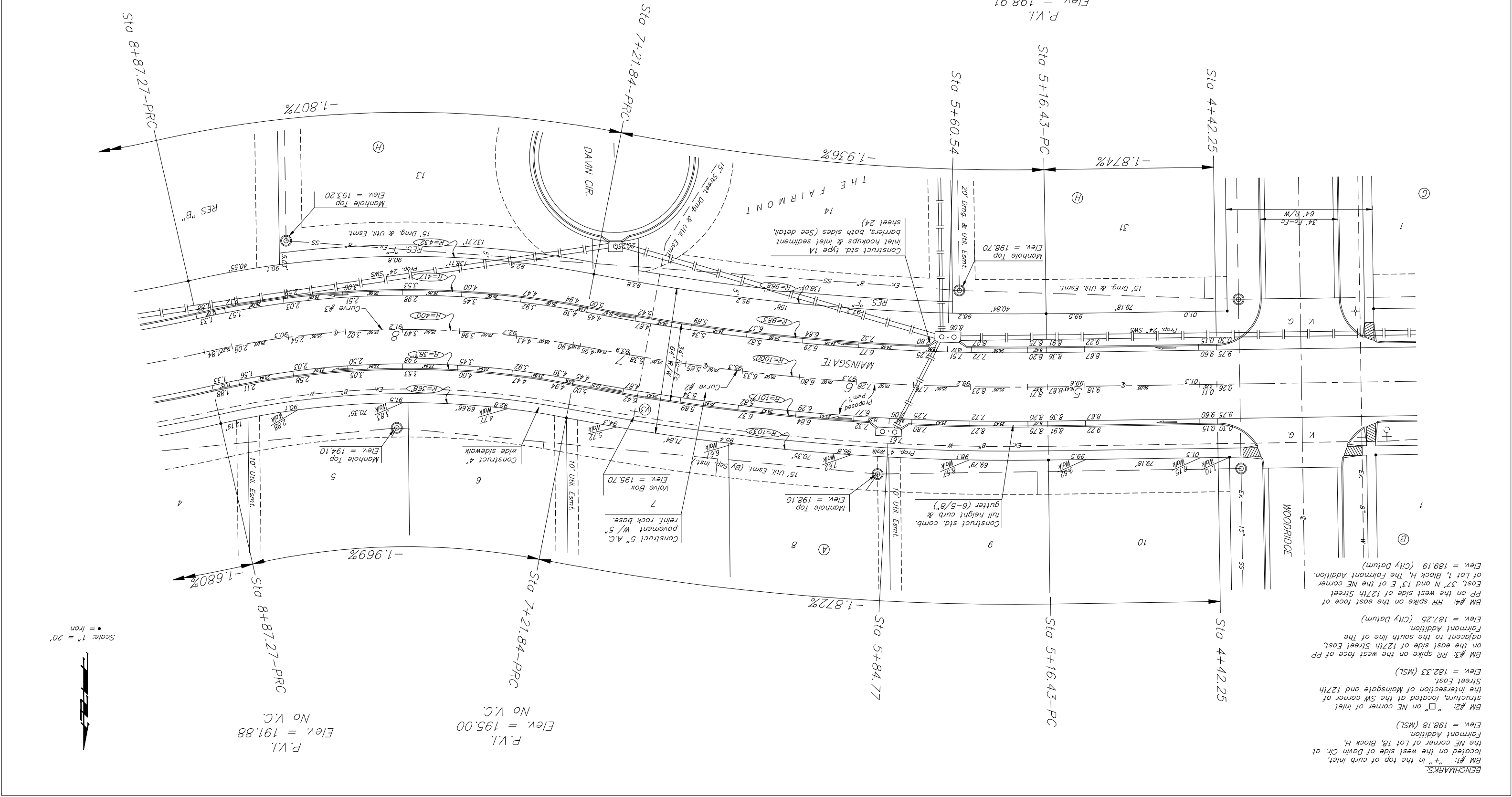


THE FAIRMONT - PHASE IV
MAINSGATE
 Baughman Company, P.A. 315 E. 5th St., Wichita, KS 67211 P 316.621771 F 316.621016
 ENGINEERING | SURVEYING | PLANNING | LANDSCAPE ARCHITECTURE
 PROJECT NUMBER 47284246
 DRAWN ATTD
 DATE 08/06
 SCALE Noted
 SHEET **8** OF **32**
 06-01-B470



P.V.I. = 191.88
 Elev. = 195.00
 No V.C.

P.V.I. = 195.00
 Elev. = 195.00
 No V.C.

P.V.I. = 198.91
 Elev. = 198.91
 No V.C.

P.V.I. = 195.00
 Elev. = 195.00
 No V.C.

Station	Arc	Chord	Chord Length
7+25.00	3.16'	3.16'	0.0000"
7+50.00	25.00'	25.00'	0.1335"
7+75.00	25.00'	23.43'	0.1335"
8+00.00	25.00'	23.43'	0.1335"
8+25.00	25.00'	23.43'	0.1335"
8+50.00	25.00'	23.43'	0.1335"
8+75.00	25.00'	23.43'	0.1335"
9+00.00	25.00'	23.43'	0.1335"
9+25.00	25.00'	23.43'	0.1335"
9+50.00	25.00'	23.43'	0.1335"
9+75.00	25.00'	23.43'	0.1335"
10+00.00	25.00'	23.43'	0.1335"
10+25.00	25.00'	23.43'	0.1335"
10+50.00	25.00'	23.43'	0.1335"
10+75.00	25.00'	23.43'	0.1335"
11+00.00	25.00'	23.43'	0.1335"
11+25.00	25.00'	23.43'	0.1335"
11+50.00	25.00'	23.43'	0.1335"
11+75.00	25.00'	23.43'	0.1335"
12+00.00	25.00'	23.43'	0.1335"
12+25.00	25.00'	23.43'	0.1335"
12+50.00	25.00'	23.43'	0.1335"
12+75.00	25.00'	23.43'	0.1335"
13+00.00	25.00'	23.43'	0.1335"
13+25.00	25.00'	23.43'	0.1335"
13+50.00	25.00'	23.43'	0.1335"
13+75.00	25.00'	23.43'	0.1335"
14+00.00	25.00'	23.43'	0.1335"
14+25.00	25.00'	23.43'	0.1335"
14+50.00	25.00'	23.43'	0.1335"
14+75.00	25.00'	23.43'	0.1335"
15+00.00	25.00'	23.43'	0.1335"
15+25.00	25.00'	23.43'	0.1335"
15+50.00	25.00'	23.43'	0.1335"
15+75.00	25.00'	23.43'	0.1335"
16+00.00	25.00'	23.43'	0.1335"
16+25.00	25.00'	23.43'	0.1335"
16+50.00	25.00'	23.43'	0.1335"
16+75.00	25.00'	23.43'	0.1335"
17+00.00	25.00'	23.43'	0.1335"
17+25.00	25.00'	23.43'	0.1335"
17+50.00	25.00'	23.43'	0.1335"
17+75.00	25.00'	23.43'	0.1335"
18+00.00	25.00'	23.43'	0.1335"
18+25.00	25.00'	23.43'	0.1335"
18+50.00	25.00'	23.43'	0.1335"
18+75.00	25.00'	23.43'	0.1335"
19+00.00	25.00'	23.43'	0.1335"
19+25.00	25.00'	23.43'	0.1335"
19+50.00	25.00'	23.43'	0.1335"
19+75.00	25.00'	23.43'	0.1335"
20+00.00	25.00'	23.43'	0.1335"
20+25.00	25.00'	23.43'	0.1335"
20+50.00	25.00'	23.43'	0.1335"
20+75.00	25.00'	23.43'	0.1335"
21+00.00	25.00'	23.43'	0.1335"
21+25.00	25.00'	23.43'	0.1335"
21+50.00	25.00'	23.43'	0.1335"
21+75.00	25.00'	23.43'	0.1335"
22+00.00	25.00'	23.43'	0.1335"
22+25.00	25.00'	23.43'	0.1335"
22+50.00	25.00'	23.43'	0.1335"
22+75.00	25.00'	23.43'	0.1335"
23+00.00	25.00'	23.43'	0.1335"
23+25.00	25.00'	23.43'	0.1335"
23+50.00	25.00'	23.43'	0.1335"
23+75.00	25.00'	23.43'	0.1335"
24+00.00	25.00'	23.43'	0.1335"
24+25.00	25.00'	23.43'	0.1335"
24+50.00	25.00'	23.43'	0.1335"
24+75.00	25.00'	23.43'	0.1335"
25+00.00	25.00'	23.43'	0.1335"
25+25.00	25.00'	23.43'	0.1335"
25+50.00	25.00'	23.43'	0.1335"
25+75.00	25.00'	23.43'	0.1335"
26+00.00	25.00'	23.43'	0.1335"
26+25.00	25.00'	23.43'	0.1335"
26+50.00	25.00'	23.43'	0.1335"
26+75.00	25.00'	23.43'	0.1335"
27+00.00	25.00'	23.43'	0.1335"
27+25.00	25.00'	23.43'	0.1335"
27+50.00	25.00'	23.43'	0.1335"
27+75.00	25.00'	23.43'	0.1335"
28+00.00	25.00'	23.43'	0.1335"
28+25.00	25.00'	23.43'	0.1335"
28+50.00	25.00'	23.43'	0.1335"
28+75.00	25.00'	23.43'	0.1335"
29+00.00	25.00'	23.43'	0.1335"
29+25.00	25.00'	23.43'	0.1335"
29+50.00	25.00'	23.43'	0.1335"
29+75.00	25.00'	23.43'	0.1335"
30+00.00	25.00'	23.43'	0.1335"
30+25.00	25.00'	23.43'	0.1335"
30+50.00	25.00'	23.43'	0.1335"
30+75.00	25.00'	23.43'	0.1335"
31+00.00	25.00'	23.43'	0.1335"
31+25.00	25.00'	23.43'	0.1335"
31+50.00	25.00'	23.43'	0.1335"
31+75.00	25.00'	23.43'	0.1335"
32+00.00	25.00'	23.43'	0.1335"
32+25.00	25.00'	23.43'	0.1335"
32+50.00	25.00'	23.43'	0.1335"
32+75.00	25.00'	23.43'	0.1335"
33+00.00	25.00'	23.43'	0.1335"
33+25.00	25.00'	23.43'	0.1335"
33+50.00	25.00'	23.43'	0.1335"
33+75.00	25.00'	23.43'	0.1335"
34+00.00	25.00'	23.43'	0.1335"
34+25.00	25.00'	23.43'	0.1335"
34+50.00	25.00'	23.43'	0.1335"
34+75.00	25.00'	23.43'	0.1335"
35+00.00	25.00'	23.43'	0.1335"
35+25.00	25.00'	23.43'	0.1335"
35+50.00	25.00'	23.43'	0.1335"
35+75.00	25.00'	23.43'	0.1335"
36+00.00	25.00'	23.43'	0.1335"
36+25.00	25.00'	23.43'	0.1335"
36+50.00	25.00'	23.43'	0.1335"
36+75.00	25.00'	23.43'	0.1335"
37+00.00	25.00'	23.43'	0.1335"
37+25.00	25.00'	23.43'	0.1335"
37+50.00	25.00'	23.43'	0.1335"
37+75.00	25.00'	23.43'	0.1335"
38+00.00	25.00'	23.43'	0.1335"
38+25.00	25.00'	23.43'	0.1335"
38+50.00	25.00'	23.43'	0.1335"
38+75.00	25.00'	23.43'	0.1335"
39+00.00	25.00'	23.43'	0.1335"
39+25.00	25.00'	23.43'	0.1335"
39+50.00	25.00'	23.43'	0.1335"
39+75.00	25.00'	23.43'	0.1335"
40+00.00	25.00'	23.43'	0.1335"
40+25.00	25.00'	23.43'	0.1335"
40+50.00	25.00'	23.43'	0.1335"
40+75.00	25.00'	23.43'	0.1335"
41+00.00	25.00'	23.43'	0.1335"
41+25.00	25.00'	23.43'	0.1335"
41+50.00	25.00'	23.43'	0.1335"
41+75.00	25.00'	23.43'	0.1335"
42+00.00	25.00'	23.43'	0.1335"
42+25.00	25.00'	23.43'	0.1335"
42+50.00	25.00'	23.43'	0.1335"
42+75.00	25.00'	23.43'	0.1335"
43+00.00	25.00'	23.43'	0.1335"
43+25.00	25.00'	23.43'	0.1335"
43+50.00	25.00'	23.43'	0.1335"
43+75.00	25.00'	23.43'	0.1335"
44+00.00	25.00'	23.43'	0.1335"
44+25.00	25.00'	23.43'	0.1335"
44+50.00	25.00'	23.43'	0.1335"
44+75.00	25.00'	23.43'	0.1335"
45+00.00	25.00'	23.43'	0.1335"
45+25.00	25.00'	23.43'	0.1335"
45+50.00	25.00'	23.43'	0.1335"
45+75.00	25.00'	23.43'	0.1335"
46+00.00	25.00'	23.43'	0.1335"
46+25.00	25.00'	23.43'	0.1335"
46+50.00	25.00'	23.43'	0.1335"
46+75.00	25.00'	23.43'	0.1335"
47+00.00	25.00'	23.43'	0.1335"
47+25.00	25.00'	23.43'	0.1335"
47+50.00	25.00'	23.43'	0.1335"
47+75.00	25.00'	23.43'	0.1335"
48+00.00	25.00'	23.43'	0.1335"
48+25.00	25.00'	23.43'	0.1335"
48+50.00	25.00'	23.43'	0.1335"
48+75.00	25.00'	23.43'	0.1335"
49+00.00	25.00'	23.43'	0.1335"
49+25.00	25.00'	23.43'	0.1335"
49+50.00	25.00'	23.43'	0.1335"
49+75.00	25.00'	23.43'	0.1335"
50+00.00	25.00'	23.43'	0.1335"
50+25.00	25.00'	23.43'	0.1335"
50+50.00	25.00'	23.43'	0.1335"
50+75.00	25.00'	23.43'	0.1335"
51+00.00	25.00'	23.43'	0.1335"
51+25.00	25.00'	23.43'	0.1335"
51+50.00	25.00'	23.43'	0.1335"
51+75.00	25.00'	23.43'	0.1335"
52+00.00	25.00'	23.43'	0.1335"
52+25.00	25.00'	23.43'	0.1335"
52+50.00	25.00'	23.43'	0.1335"
52+75.00	25.00'	23.43'	0.1335"
53+00.00	25.00'	23.43'	0.1335"
53+25.00	25.00'	23.43'	0.1335"
53+50.00	25.00'	23.43'	0.1335"
53+75.00	25.00'	23.43'	0.1335"
54+00.00	25.00'	23.43'	0.1335"
54+25.00	25.00'	23.43'	0.1335"
54+50.00	25.00'	23.43'	0.1335"
54+75.00	25.00'	23.43'	0.1335"
55+00.00	25.00'	23.43'	0.1335"
55+25.00	25.00'	23.43'	0.1335"
55+50.00	25.00'	23.43'	0.1335"
55+75.00	25.00'	23.43'	0.1335"
56+00.00	25.00'	23.43'	0.1335"
56+25.00	25.00'	23.43'	0.1335"
56+50.00	25.00'	23.43'	0.1335"
56+75.00	25.00'	23.43'	0.1335"
57+00.00	25.00'	23.43'	0.1335"
57+25.00	25.00'	23.43'	0.1335"
57+50.00	25.00'	23.43'	0.1335"
57+75.00	25.00'	23.43'	0.1335"
58+00.00	25.00'	23.43'	0.1335"
58+25.00	25.00'	23.43'	0.1335"
58+50.00	25.00'	23.43'	0.1335"
58+75.00	25.00'	23.43'	0.1335"
59+00.00	25.00'	23.43'	0.1335"
59+25.00	25.00'	23.43'	0.1335"
59+50.00	25.00'	23.43'	0.1335"
59+75.00	25.00'	23.43'	0.1335"
60+00.00	25.00'	23.43'	0.1335"
60+25.00	25.00'	23.43'	0.1335"
60+50.00	25.00'	23.43'	0.1335"
60+75.00	25.00'	23.43'	0.1335"
61+00.00	25.00'	23.43'	0.1335"
61+25.00	25.00'	23.43'	0.1335"
61+50.00	25.00'	23.43'	0.1335"
61+75.00	25.00'	23.43'	0.1335"
62+00.00	25.00'	23.43'	0.1335"
62+25.00	25.00'	23.43'	0.1335"
62+50.00	25.00'	23.43'	0.1335"
62+75.00	25.00'	23.43'	0.1335"
63+00.00	25.00'	23.43'	0.1335"
63+25.00	25.00'	23.43'	0.1335"
63+50.00	25.00'	23.43'	0.1335"
63+75.00	25.00'	23.43'	0.1335"
64+00.00	25.00'	23.43'	0.1335"
64+25.00	25.00'	23.43'	0.1335"
64+50.00	25.00'	23.43'	0.1335"
64+75.00	25.00'	23.43'	0.1335"
65+00.00	25.00'	23.43'	0.1335"
65+25.00	25.00'	23.43'	0.1335"
65+50.00	25.00'	23.43'	0.1335"
65+75.00	25.00'	23.43'	0.1335"