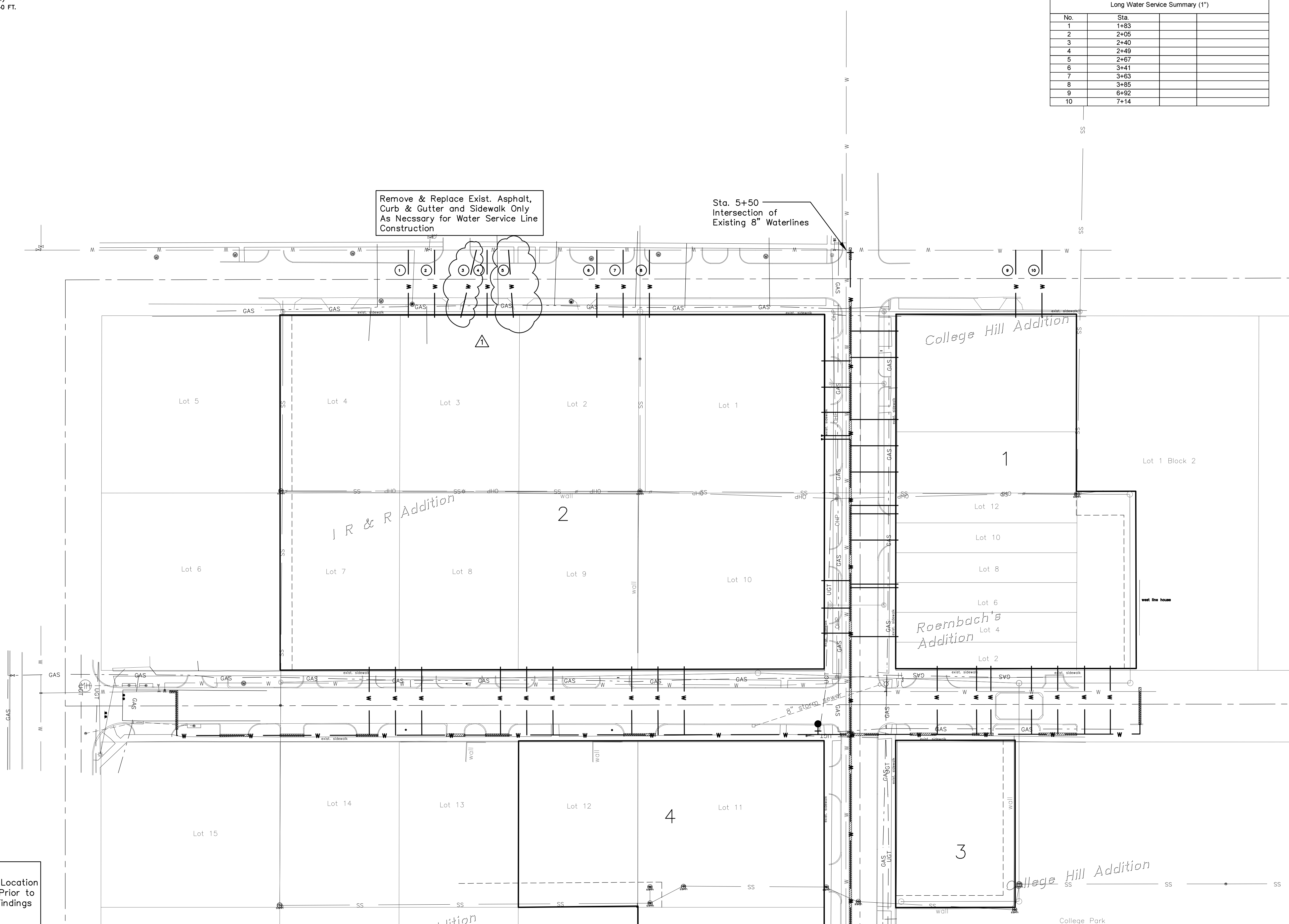


Long Water Service Summary (1")			
No.	Sta.		
1	1+83		
2	2+05		
3	2+40		
4	2+49		
5	2+67		
6	3+41		
7	3+63		
8	3+85		
9	6+92		
10	7+14		

Remove & Replace Exist. Asphalt, Curb & Gutter and Sidewalk Only As Necessary for Water Service Line Construction

Sta. 5+50 Intersection of Existing 8" Waterlines



Note:
 Contractor to Field Verify Location and Depth of All Utilities Prior to Construction and Report Findings Project Engineer

No.	Date	By	Approved	Revision
1	10/12/07	AM	JU	Revised Long Service Location

PARKSTONE ADDITION
WATER DISTRIBUTION SYSTEM IMPROVEMENTS
 Service Lines Across First Street
CITY OF WICHITA, KANSAS
 JAMES L. HENOUR, P.E., CITY ENGINEER
 Proj. #48-90303 O.C.A. #755380

POE & ASSOCIATES, INC.
CONSULTING ENGINEERS
 5940 E. Central, Suite 200 • Wichita, KS 67208-4242
 Phone 316/685-4114 • FAX 316/685-4444

FINAL

Designed By: S. Schmidt
 Drawn By: M. Tucker/A. Moss
 P.O. Job No.: 1879
 Date: OCTOBER 2007

Sheet
 7 of 8