

PRIVATE PROJECT FOR FIRE SERVICE EXTENSION

to serve

LILLIE MEDICAL PARK - FAMILY HEALTH REHAB CENTER

CITY OF WICHITA, KANSAS

James L. Armour, P.E. City Engineer

Project Number
1320 PPW 607853

As Built Plans:

CONTRACTOR: Ewertz Exc.
INSPECTOR: Larry Gann, K E Miller Engineering
.PDF by: NWS, 11-26-07

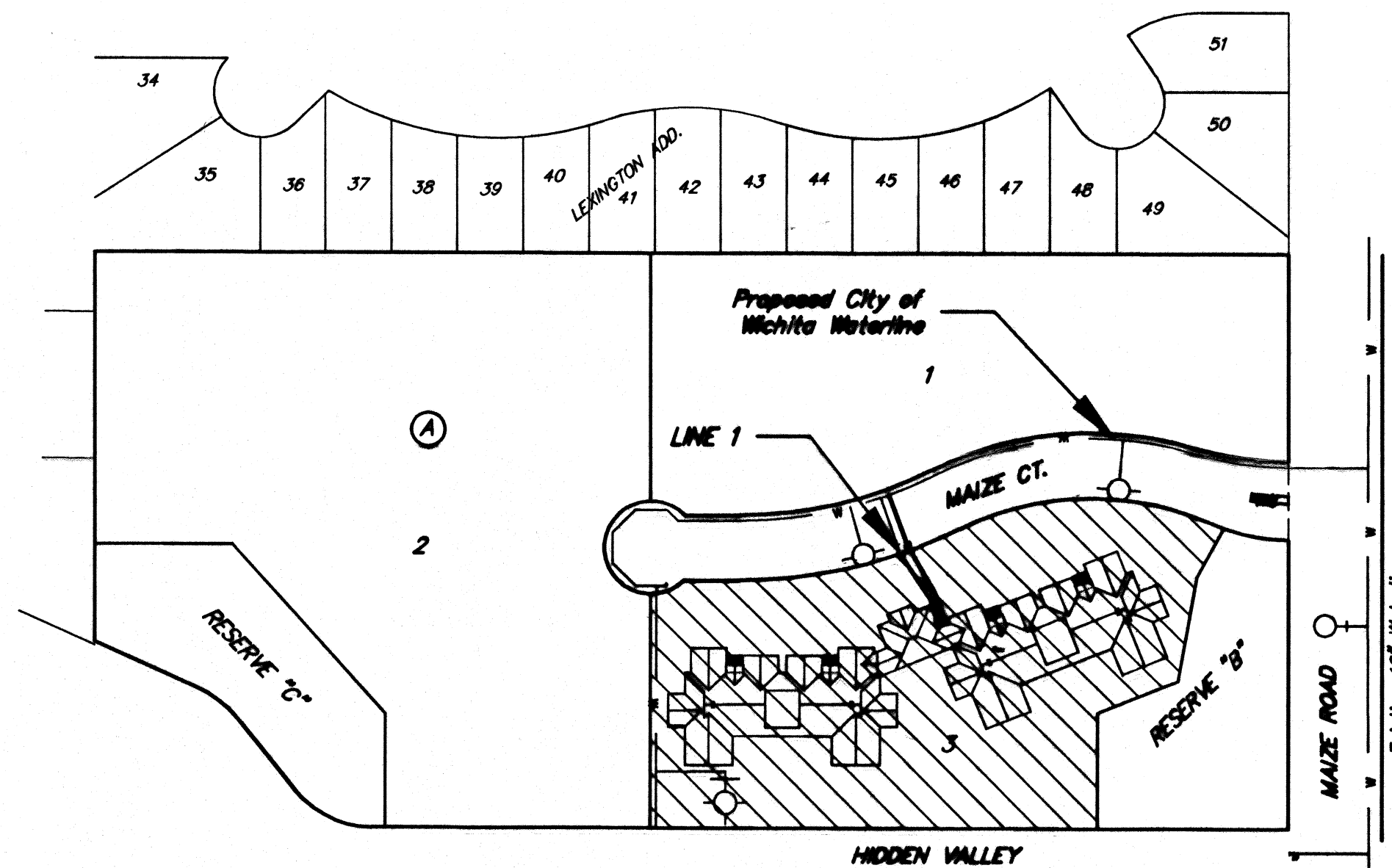
GENERAL NOTES:

1. Contractor will be required to provide notice to utility companies a minimum of twenty-four (24) hours prior to any excavation, as follows:

Kansas One-Call	687-2470
-----------------	----------

The Contractor must notify the following in case of an emergency:-

Cox Communications	262-4270
Kansas Gas Service	1-888-482-4930
Westar Energy	383-8830
Aquila Energy	1-800-303-0357
SBC	268-2245
City of Wichita Water Dept.	268-2563
City of Wichita Sewer Maint.	268-4024
City of Wichita Storm Sewer Maint.	268-4080
City of Wichita Traffic Maint.	268-4034
Canoco Pipeline Co.	1-800-231-2531
Southern Star Pipeline Co.	529-6600
Phillips Pipeline Co.	1-800-766-8230
Jayhawk Pipeline Co.	1-888-542-9575
2. Underground utility service lines and overhead utility pole lines are to be adjusted as necessary by others prior to construction unless the plans specifically call for their adjustment by the Contractor or unless the plans specifically identify a utility to be adjusted by its owner during construction. Existing utilities and their location, as shown on the plans, represent the best information obtainable for design. The Contractor will be required to work around existing utilities within the right-of-way which do not conflict with proposed construction.
3. Trees and shrubs in public right-of-way which are in direct conflict with proposed new construction shall be removed by the Contractor with the Engineer's approval. Trees and shrubs which are not in direct conflict with proposed new construction shall be saved and protected from damage.
4. The Contractor shall give all property owners and/or tenants of developed property abutting the construction of this project a minimum of ten (10) days advance notice prior to start of construction.
5. The Contractor shall be responsible for preserving property irons. The Contractor will be required to re-establish any property irons which are damaged or destroyed by his construction operations. Such irons shall be re-established by a licensed land surveyor in accordance with state laws.
6. All water mains and appurtenances shall be installed in accordance with City of Wichita, Kansas Standard Specifications for Water Main Installations No. 14533.
7. All existing and proposed erosion control measures including silt fencing, erosion control mat, straw bales, inlet barriers, and const. entrance shall be maintained throughout construction by the contractor and until project is accepted by the City of Wichita. The on-site engineer shall complete weekly reports on the status of erosion control measures. The contractor shall be required to comply with maintenance and/or replacement of erosion control measures as determined by the on-site engineer until project is accepted by City of Wichita. Maintenance and/or replacement of erosion control measures to be paid by L.S. bid item "Erosion Control BMP's."
8. Contractor shall refer to the Storm Water Pollution Prevention Plan for required erosion control measures and coordinate with General Contractor as to installation and maintenance requirements.

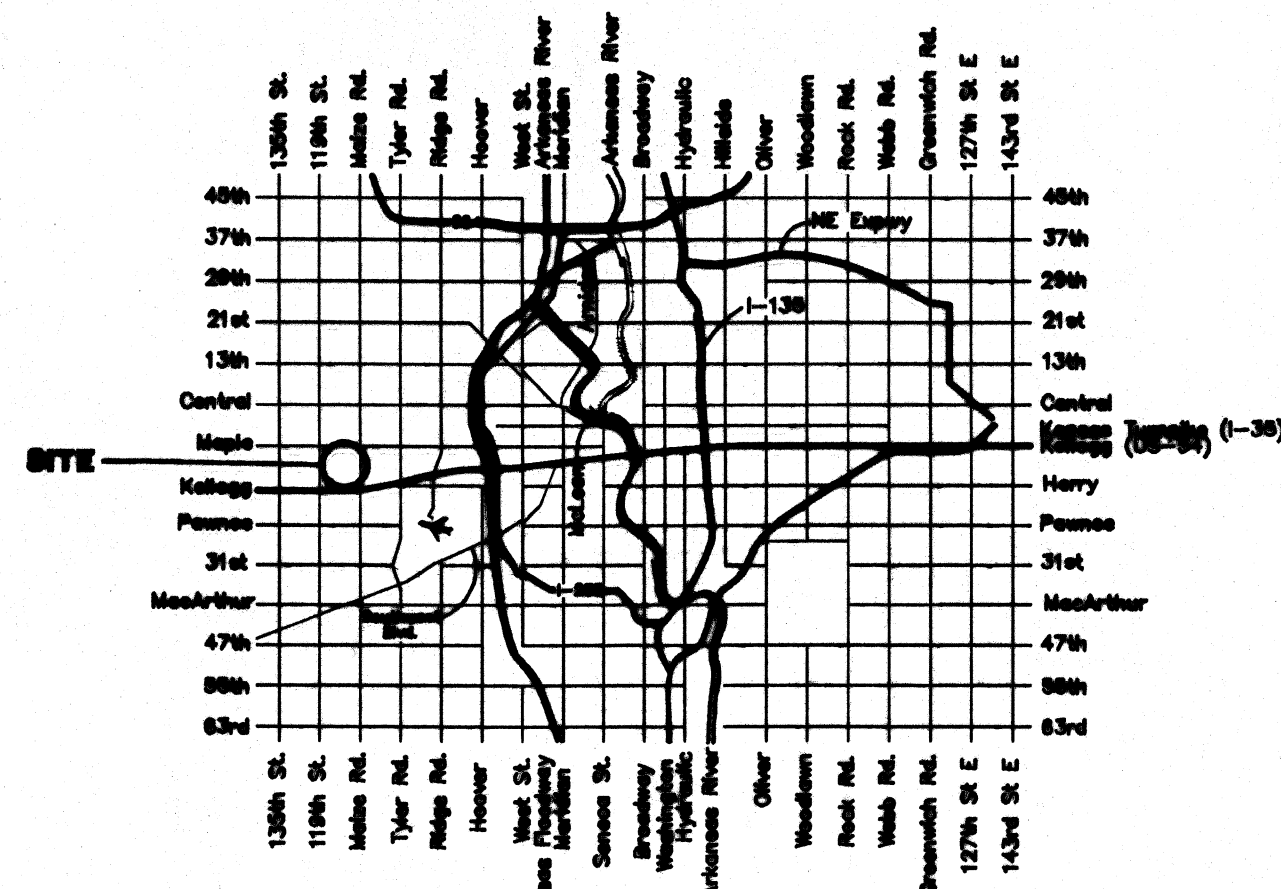


Benchmarks

City Disc - Maze Road & McCormick (Hidden Valley) 0.5 MI. South of Maple on the NE Corner of R.C.B.C Over Cowash Creek, South of Hidden Valley Elev. = 1318.93 City Datum (1318.93 NGVD29)

Sheet Index

Title Sheet	1
Water Details	2
Line 1	3



Vicinity Map

APPROVED AS NOTED
BY CITY ENGINEER OF WICHITA,
BY WICHITA WATER & SEWER DEPARTMENT,
& BY WICHITA FIRE DEPARTMENT

Public Works *[Signature]* 6/14/07
Water & Sewer *[Signature]* 6/11/07
Fire *[Signature]* 6-12-07

NOTE TO CONTRACTORS

Public Property:
Inspection and testing for the waterline is to be provided by a Licensed Consulting Engineering Firm under contract with the Owner/Developer. Said inspection to be in accordance with the City of Wichita standard construction engineering practices and certified by a Professional Engineer Licensed in the state of Kansas. No work shall be performed in dedicated easements or public right-of-way by the Contractor without such inspection nor shall any work be commenced without written authorization by the City Engineer. All Construction and Materials shall comply with the City or Wichita Specifications and Standards (on file and available in the City Engineer's Office).

