

BENCHMARK:
 3/4" IRON IN CONCRETE NORTH 1/4 CORNER
 SEC. 29, TWP. 26 S. R-2-E
 ELEVATION: 1400.30 (NGVD 29)

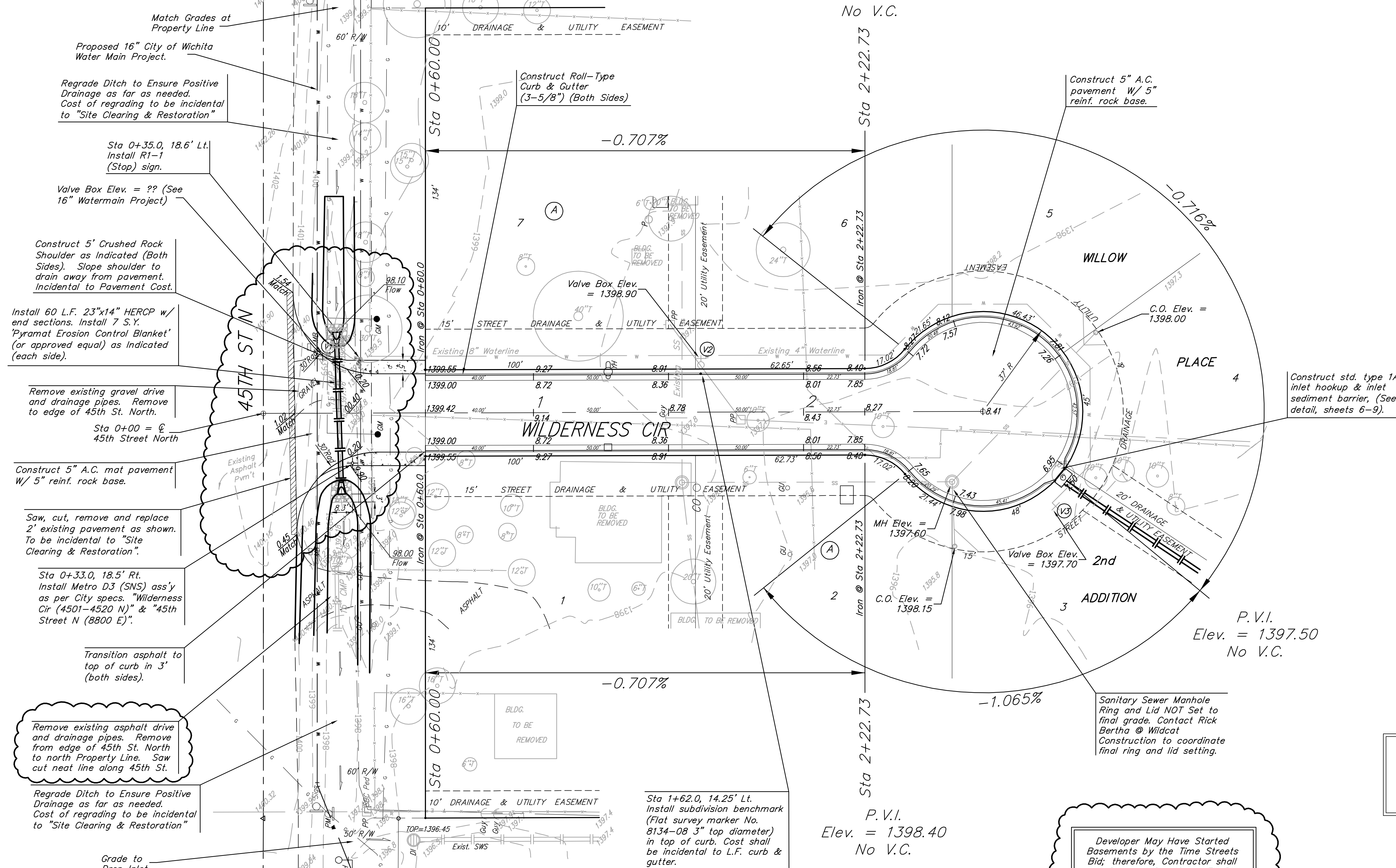
Scale: 1" = 20'
 • = Iron

P.V.I.
 Elev. = 1398.40
 No V.C.

WATER VALVE LOCATION TABLE

VALVE NUMBER	BASELINE STATION	OFFSET DISTANCE	OFFSET DIRECTION
V1	unknown	21'	Lt.
V2	1+62.00	21'	Lt.
V3	2+92.04	33.9'	Rt.

Paving contractor will be responsible to operate all water valves on the project, in the presence of the inspector, to ensure accessibility to the valves, and that all valves are left in the "ON" position when the project is completed.



Match Grades at Property Line
 Proposed 16" City of Wichita Water Main Project.
 Regrade Ditch to Ensure Positive Drainage as far as needed. Cost of regrading to be incidental to "Site Clearing & Restoration"

Sta 0+35.0, 18.6' Lt. Install R1-1 (Stop) sign.
 Valve Box Elev. = ?? (See 16" Watermain Project)

Construct 5' Crushed Rock Shoulder as Indicated (Both Sides). Slope shoulder to drain away from pavement. Incidental to Pavement Cost.

Install 60 L.F. 23"x14" HERCP w/ end sections. Install 7 S.Y. 'Pyramat Erosion Control Blanket' (or approved equal) as indicated (each side).

Remove existing gravel drive and drainage pipes. Remove to edge of 45th St. North.
 Sta 0+00 = C 45th Street North

Construct 5" A.C. mat pavement w/ 5" reinf. rock base.

Saw, cut, remove and replace 2' existing pavement as shown. To be incidental to "Site Clearing & Restoration".

Sta 0+33.0, 18.5' Rt. Install Metro D3 (SNS) ass'y as per City specs. "Wilderness Cir (4501-4520 N)" & "45th Street N (8800 E)".

Transition asphalt to top of curb in 3' (both sides).

Remove existing asphalt drive and drainage pipes. Remove from edge of 45th St. North to north Property Line. Saw cut neat line along 45th St.

Regrade Ditch to Ensure Positive Drainage as far as needed. Cost of regrading to be incidental to "Site Clearing & Restoration"

Grade to Drop Inlet.

Driveways removal, drainage pipes removal, trees removal, ditch regrading, general clean-up of Right-of-Way, and what ever else is needed to make ditch flow smoothly shall be incidental to bid item "Site Clearing and Restoration".

Sta 1+62.0, 14.25' Lt. Install subdivision benchmark (Flat survey marker No. 8134-08 3" top diameter) in top of curb. Cost shall be incidental to L.F. curb & gutter.

Developer May Have Started Basements by the Time Streets Bid; therefore, Contractor shall visit Site and See if any Fill Dirt is stockpiled around site and is available for Street Construction.

Roll type curb & gutter to be constructed on the pavement on this sheet. Top of curb elevation are given for full height curb.

Most existing buildings, few trees, and other items have already been removed. Shown for reference only. Contractor to field verify items to remove. Shall be incidental to bid item "Site Clearing and Restoration".

Note: The Paving Contractor shall coordinate with the Water Main contractor that is constructing the 16" water main in 45th St. N. The pavement hookup shall not be constructed until the water main at the crossing has been installed.

Baughman Willow Place 2nd Addition
Wilderness Cir
 Street Paving

Baughman Company, P.A. 315 Ella St. Wichita, KS 67211 F 316-262-7271 F 316-262-0149
 ENGINEERING | SURVEYING | PLANNING | LANDSCAPE ARCHITECTURE

PROJECT NUMBER 472-84601	DESIGN MWS	DRAWN MWS
REVISIONS: 11/20/07 Site Revision Clouds	APPROVED MWS	DATE 10/07
SCALE Noted		SHEET 4 OF 12

E:\eng\Willow Place 2nd Add. \str1_plan.dwg 07-06-E872