

BM #1 - City of Wichita  
Benchmark Disc, SE Corner of  
Clifton and 55th Street South,  
Southwest corner of RCBC, on top  
of hubguard at the West end.  
ELEV. = 1263.29 NGVD29

BM #2 - "□" Cut on wall footing  
located 29' North of the South  
end of wall, at the Southeast  
corner of Lot 7 Block A,  
Meadowlake Beach Addition,  
Sedgwick County, Kansas.  
ELEV. = 1266.82 NGVD29

BM #3 - "□" Cut Top of Curb,  
West side South end of Concrete  
street North west of Northeast  
corner of Meadowlake Beach  
Addition, Sedgwick County, Kansas.  
ELEV. = 1262.86 NGVD29

BM #4 - "□" Cut Top of Curb,  
East return on East side of  
Concrete street North of the  
Northwest Corner of Meadowlake  
Beach Addition, Sedgwick County,  
Kansas.  
ELEV. = 1262.95 NGVD29

Sta 5+22.0, Line 1  
Construct std. manhole  
(6' Dia.) w/ grated lid  
(Neenah R-2501 or  
equivalent).  
Top Elev. = 1262.90

Install hay bale  
sediment barrier per  
detail, sheet 22.

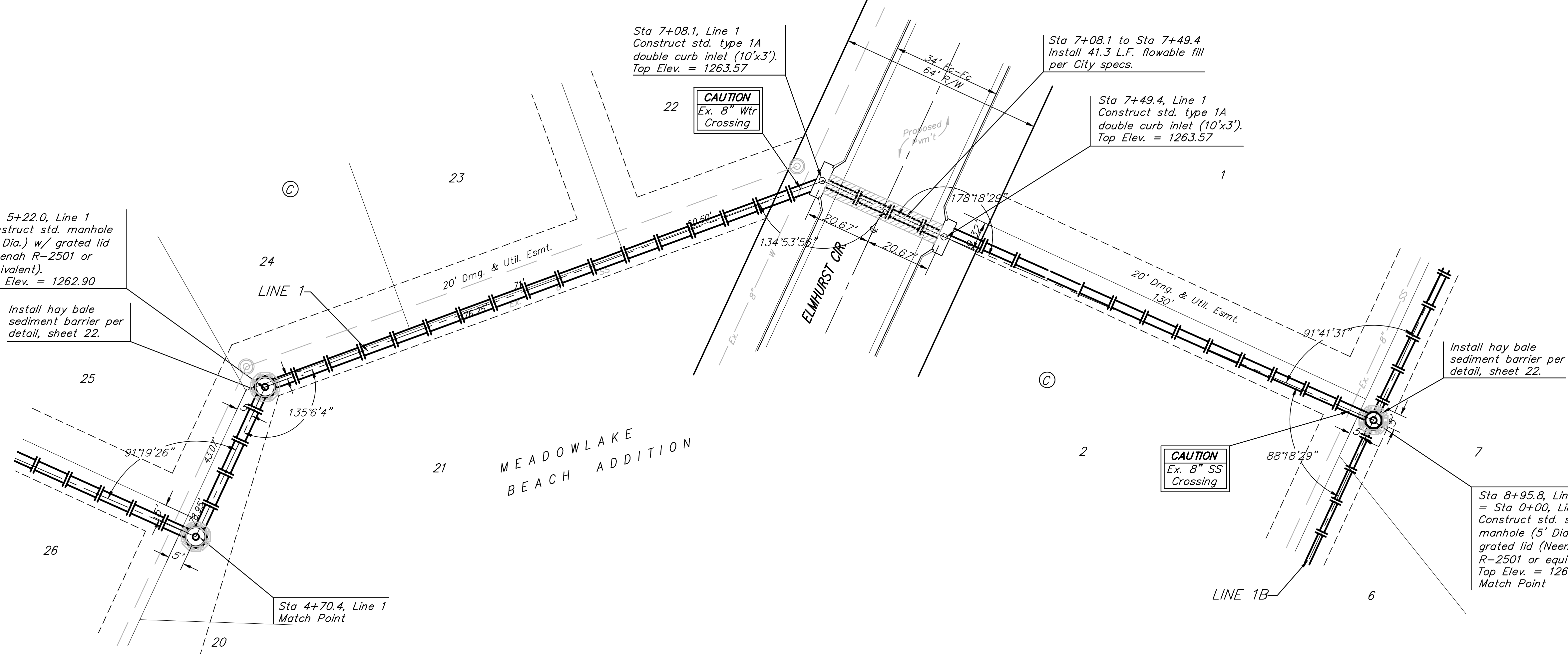
Sta 4+70.4, Line 1  
Match Point

Sta 7+08.1, Line 1  
Construct std. type 1A  
double curb inlet (10'x3').  
Top Elev. = 1263.57

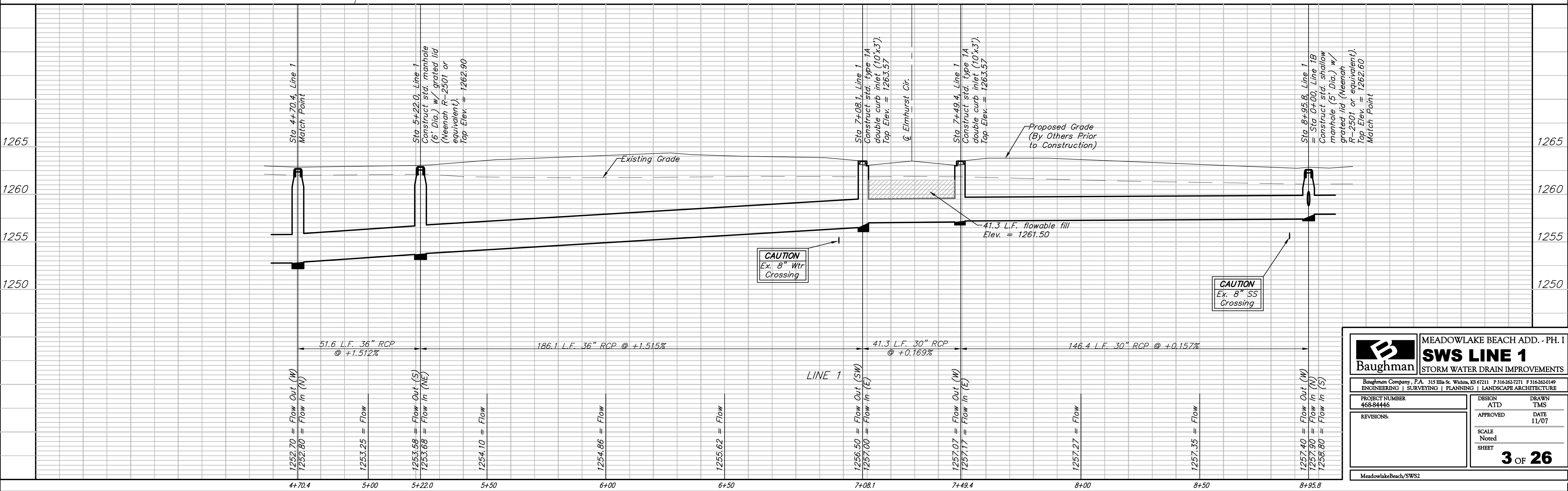
Sta 7+08.1 to Sta 7+49.4  
Install 41.3 L.F. flowable fill  
per City specs.

Sta 7+49.4, Line 1  
Construct std. type 1A  
double curb inlet (10'x3').  
Top Elev. = 1263.57

Sta 8+95.8, Line 1  
= Sta 0+00, Line 1B  
Construct std. shallow  
manhole (5' Dia.) w/  
grated lid (Neenah  
R-2501 or equivalent).  
Top Elev. = 1262.60  
Match Point



Scale: 1" = 20' Horizontal  
1" = 5' Vertical  
• = Iron



**Baughman** MEADOWLAKE BEACH ADD. - PH. I  
**SWS LINE 1**  
STORM WATER DRAIN IMPROVEMENTS

Baughman Company, P.A. 315 Ellis St. Wichita, KS 67211 P 316-262-7271 F 316-262-0149  
ENGINEERING | SURVEYING | PLANNING | LANDSCAPE ARCHITECTURE

|                             |                |                  |
|-----------------------------|----------------|------------------|
| PROJECT NUMBER<br>468-84446 | DESIGN<br>ATD  | DRAWN<br>TMS     |
| REVISIONS:                  | APPROVED       | DATE<br>11/07    |
|                             | SCALE<br>Noted | SHEET<br>3 OF 26 |

MeadowlakeBeach/SWS2