

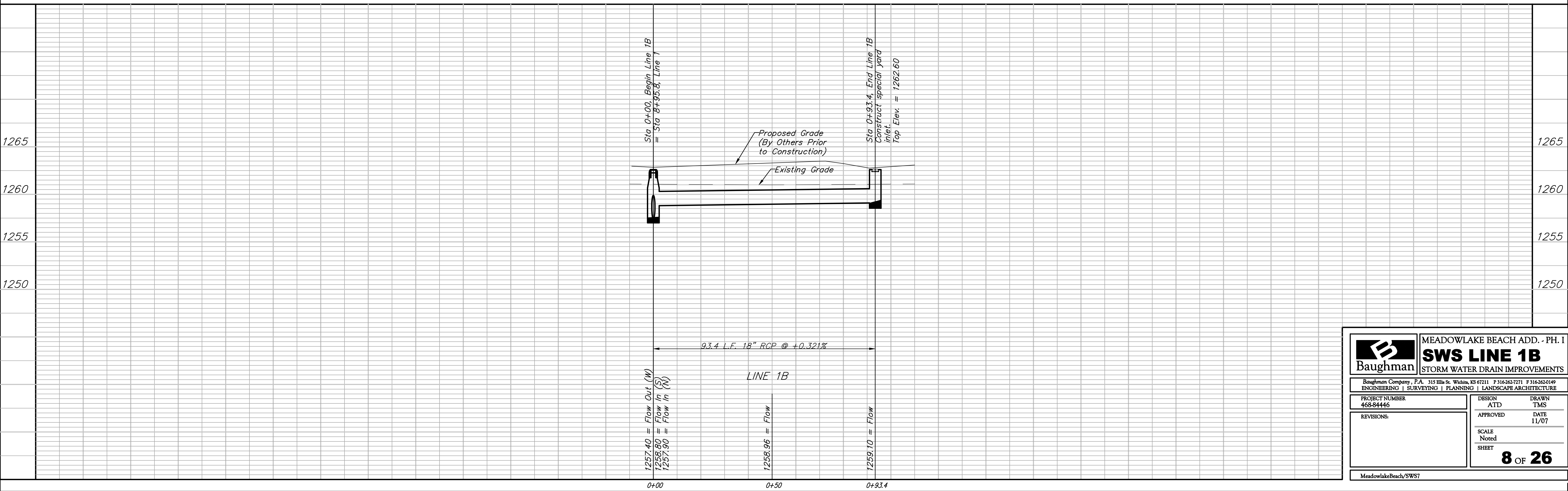
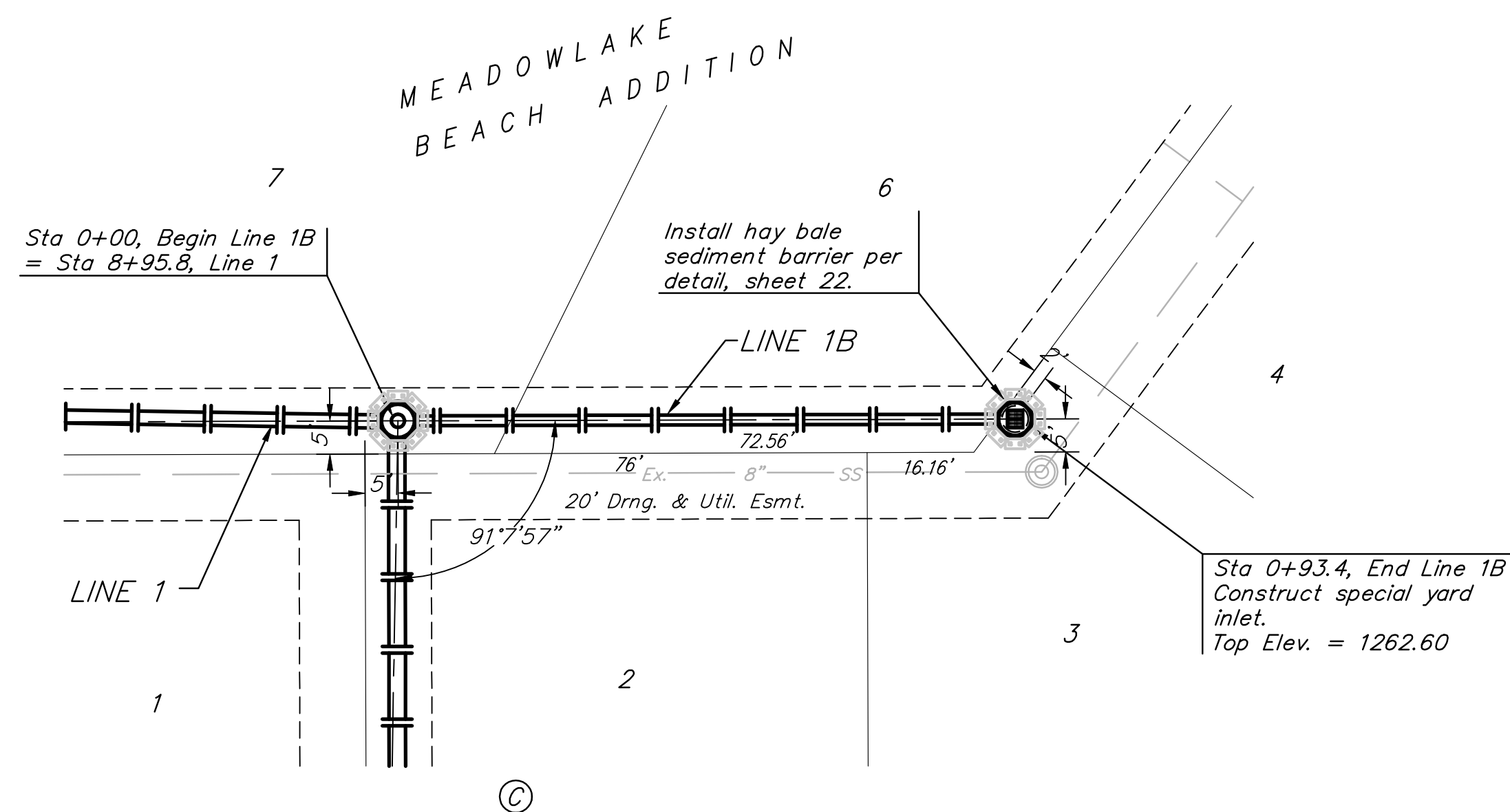
BM #1 - City of Wichita
 Benchmark Disc, SE Corner of
 Clifton and 55th Street South,
 Southwest corner of RCBC, on top
 of hubguard at the West end.
 ELEV. = 1263.29 NGVD29

BM #2 - "□" Cut on wall footing
 located 29' North of the South
 end of wall, at the Southeast
 corner of Lot 7 Block A,
 Meadowlake Beach Addition,
 Sedgwick County, Kansas.
 ELEV. = 1266.82 NGVD29

BM #3 - "□" Cut Top of Curb,
 West side South end of Concrete
 street North west of Northeast
 corner of Meadowlake Beach
 Addition, Sedgwick County, Kansas.
 ELEV. = 1262.86 NGVD29

BM #4 - "□" Cut Top of Curb,
 East return on East side of
 Concrete street North of the
 Northwest Corner of Meadowlake
 Beach Addition, Sedgwick County,
 Kansas.
 ELEV. = 1262.95 NGVD29

Scale: 1" = 20' Horizontal
 1" = 5' Vertical
 • = Iron



	MEADOWLAKE BEACH ADD. - PH. I	
	SWS LINE 1B	
STORM WATER DRAIN IMPROVEMENTS		
<small>Baughman Company, P.A. 315 Ellis St. Wichita, KS 67211 P 316-262-7271 F 316-262-0149 ENGINEERING SURVEYING PLANNING LANDSCAPE ARCHITECTURE</small>		
PROJECT NUMBER 468-84446	DESIGN ATD	DRAWN TMS
REVISIONS:	APPROVED	DATE 11/07
SCALE Noted		SHEET 8 OF 26
<small>MeadowlakeBeach/SWS7</small>		