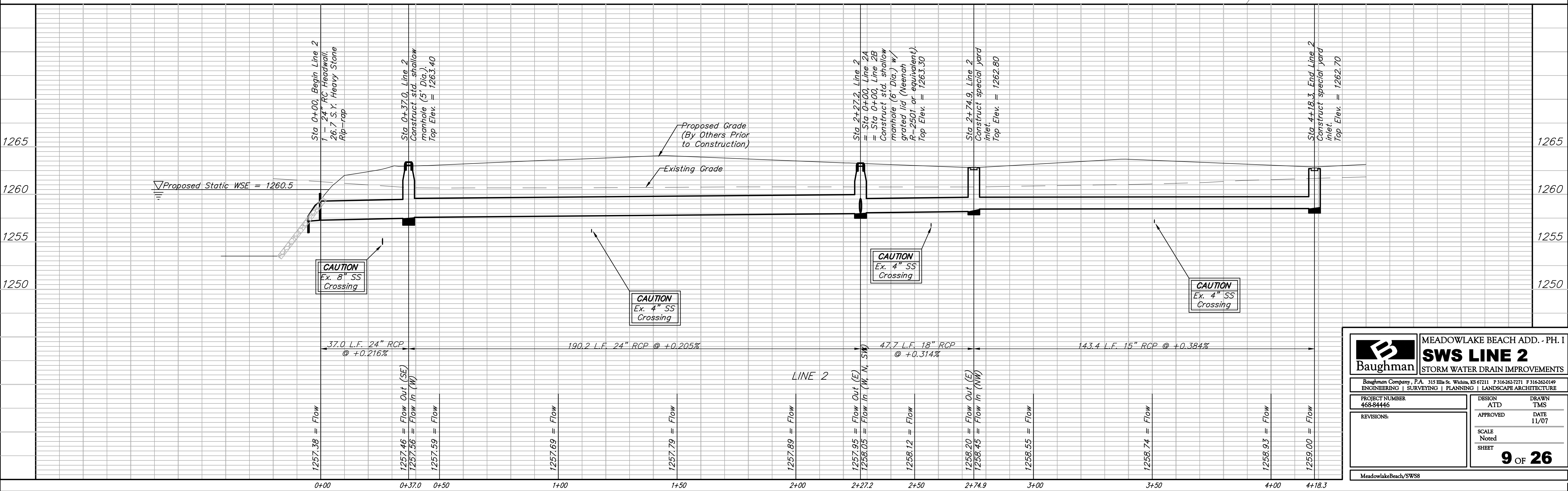
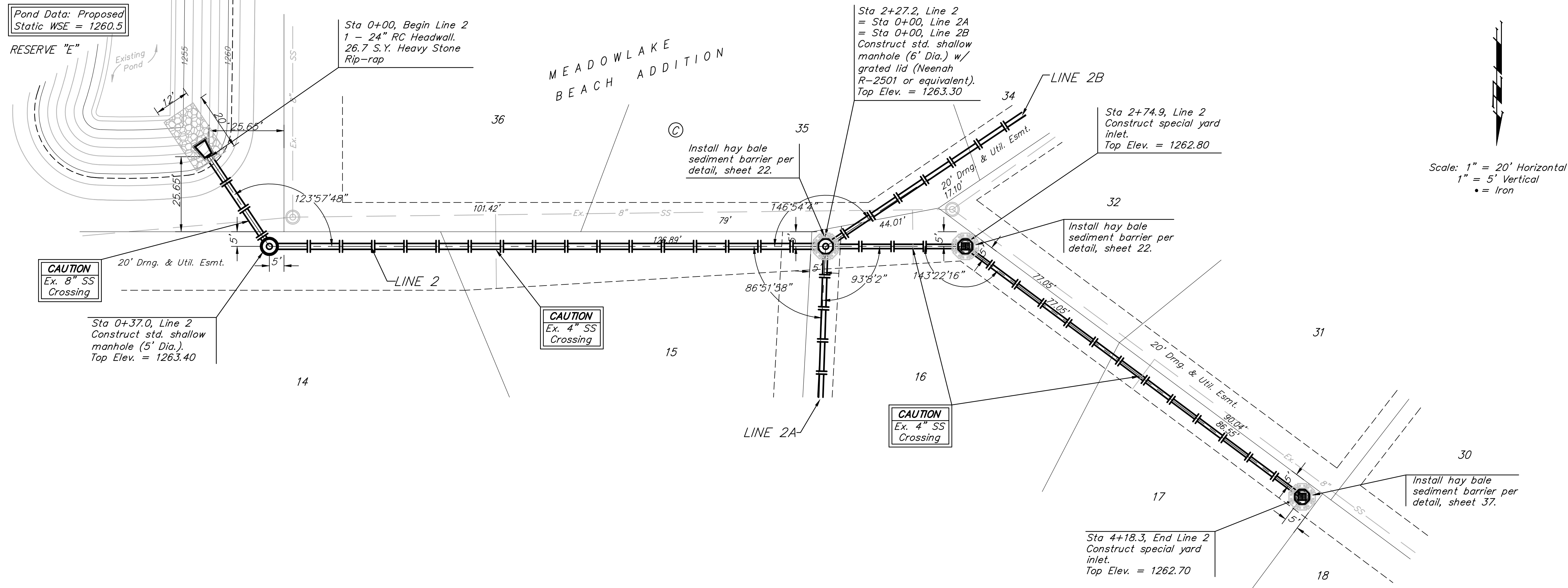


BM #1 - City of Wichita  
Benchmark Disc, SE Corner of  
Clifton and 55th Street South,  
Southwest corner of RCBC, on top  
of hubguard at the West end.  
ELEV. = 1263.29 NGVD29

BM #2 - "□" Cut on wall footing  
located 29' North of the South  
end of wall, at the Southeast  
corner of Lot 7 Block A,  
Meadowlake Beach Addition,  
Sedgwick County, Kansas.  
ELEV. = 1266.82 NGVD29

BM #3 - "□" Cut Top of Curb,  
West side South end of Concrete  
street North west of Northeast  
corner of Meadowlake Beach  
Addition, Sedgwick County, Kansas.  
ELEV. = 1262.86 NGVD29

BM #4 - "□" Cut Top of Curb,  
East return on East side of  
Concrete street North of the  
Northwest Corner of Meadowlake  
Beach Addition, Sedgwick County,  
Kansas.  
ELEV. = 1262.95 NGVD29



|   |                               |                         |
|---|-------------------------------|-------------------------|
|   | MEADOWLAKE BEACH ADD. - PH. I |                         |
|   | <b>SWS LINE 2</b>             |                         |
| STORM WATER DRAIN IMPROVEMENTS  |                               |                         |
| <small>Baughman Company, P.A. 315 Ellis St. Wichita, KS 67211 P 316-262-7271 F 316-262-0149<br/>ENGINEERING   SURVEYING   PLANNING   LANDSCAPE ARCHITECTURE</small> |                               |                         |
| PROJECT NUMBER<br>468-84446   | DESIGN<br>ATD                 | DRAWN<br>TMS            |
| REVISIONS:  | APPROVED                      | DATE<br>11/07           |
| SCALE<br>Noted  |                               | SHEET<br><b>9 OF 26</b> |
| <small>MeadowlakeBeach/SWS8</small>   |                               |                         |