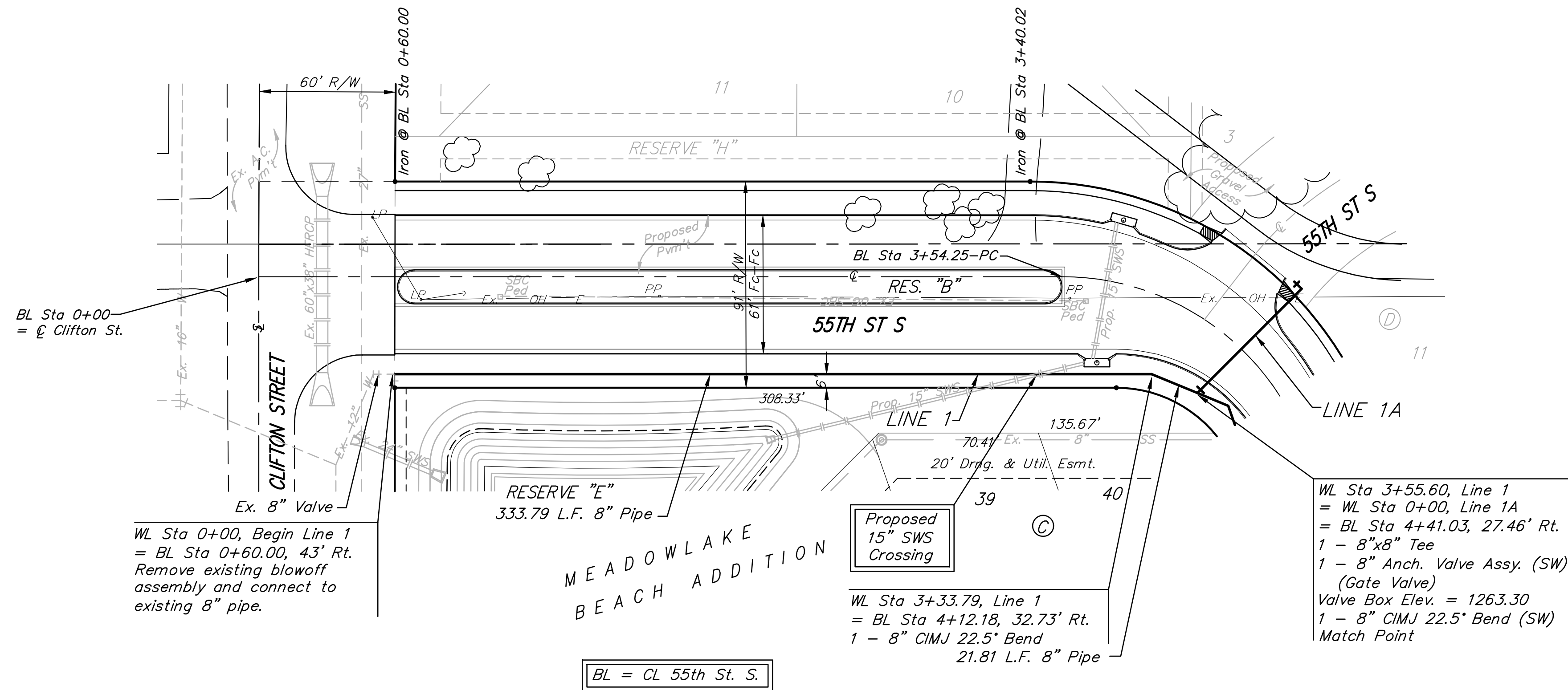


BM #1 - City of Wichita  
Benchmark Disc, SE Corner of  
Clifton and 55th Street South,  
Southwest corner of RCB, on top  
of hubguard at the West end.  
ELEV. = 1263.29 NGVD29

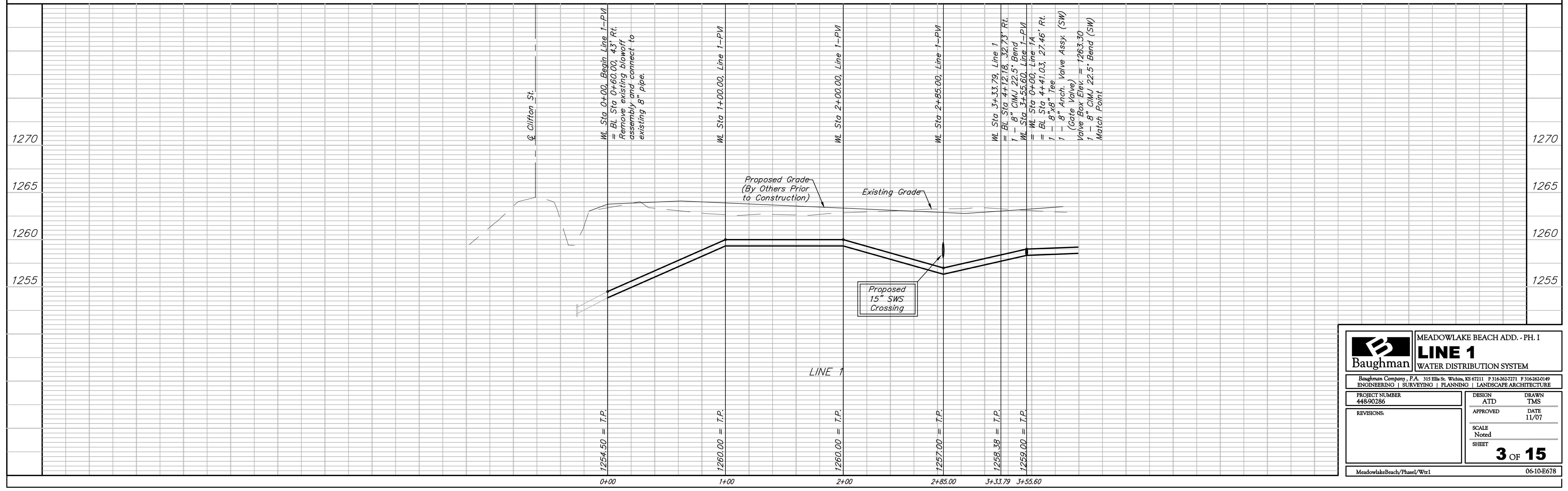
BM #2 - "□" Cut on wall footing  
located 29' North of the South  
end of wall, at the Southeast  
corner of Lot 7 Block A,  
Meadowlake Beach Addition,  
Sedgwick County, Kansas.  
ELEV. = 1266.82 NGVD29

BM #3 - "□" Cut Top of Curb,  
West side South end of Concrete  
street North west of Northeast  
corner of Meadowlake Beach  
Addition, Sedgwick County, Kansas.  
ELEV. = 1262.86 NGVD29

BM #4 - "□" Cut Top of Curb,  
East return on East side of  
Concrete street North of the  
Northwest Corner of Meadowlake  
Beach Addition, Sedgwick County,  
Kansas.  
ELEV. = 1262.95 NGVD29



Scale: 1" = 40' Horizontal  
1" = 5' Vertical  
• = Iron



		<b>MEADOWLAKE BEACH ADD. - PH. I</b> <b>LINE 1</b> WATER DISTRIBUTION SYSTEM	
<small>Baughman Company, P.A. 315 Ellis St. Wichita, KS 67211 P 316-262-7271 F 316-262-0149          ENGINEERING   SURVEYING   PLANNING   LANDSCAPE ARCHITECTURE</small>			
PROJECT NUMBER 448-90286	DESIGN ATD	DRAWN TMS	
REVISIONS:	APPROVED	DATE 11/07	
SCALE Noted			
SHEET		<b>3 OF 15</b>	
<small>MeadowlakeBeach/Phase1/Wtr1</small>			<small>06-10-E678</small>