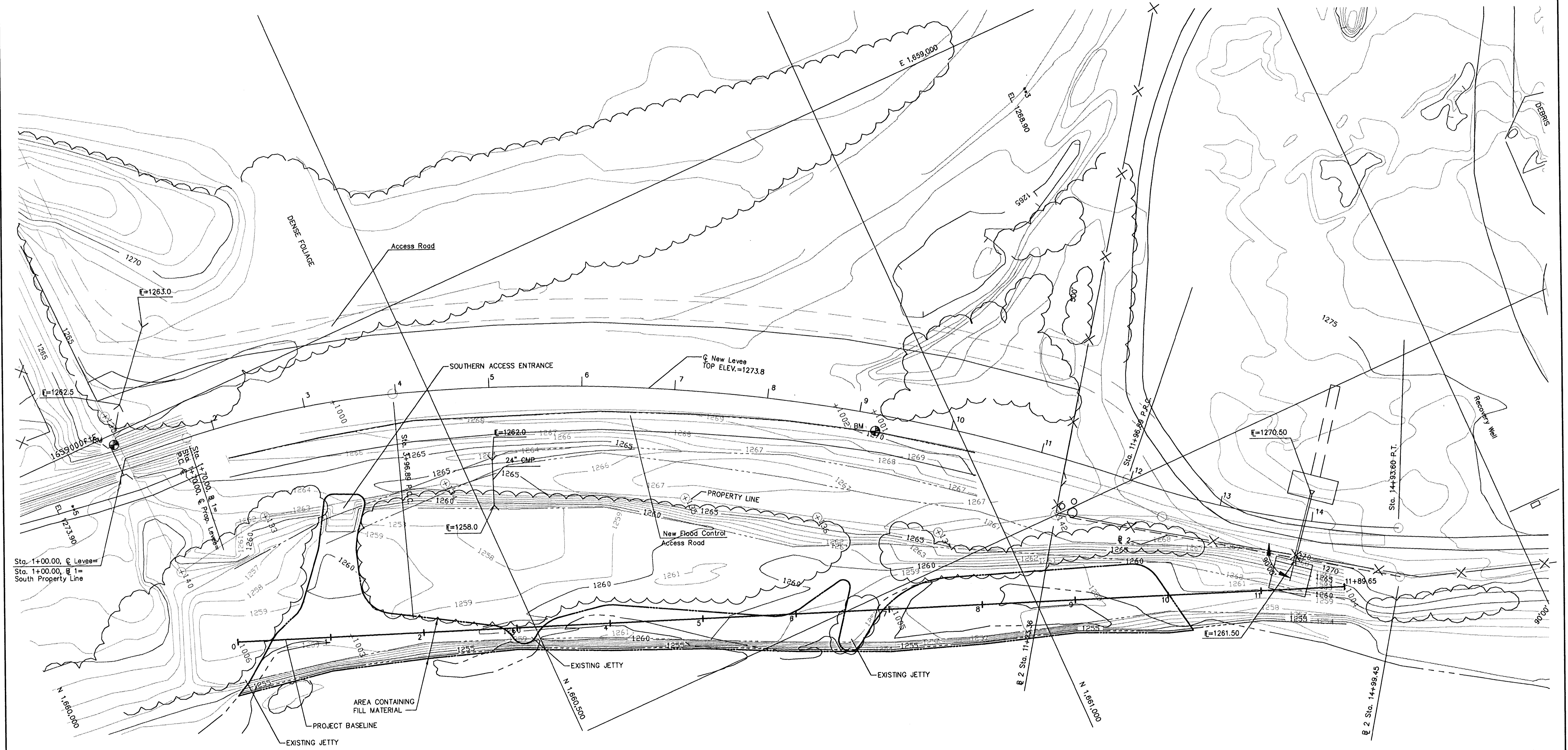


P.O.T. @ 1 STA. 0+39.98  
 1. 1/2" REBAR CAPPED "PEC PA"  
 2. "□" ON N.W. CORNER WEST HEADWALL OF RCP 55.8' NNW

P.O.T. @ 1 STA. 2+00.00 (@ EXISTING LEVEE)  
 1. 1/2" REBAR CAPPED "PEC PA"  
 2. "□" ON N.W. CORNER WEST HEADWALL OF RCP 107.71' S  
 3. 60d NAIL IN NORTH FACE 18" COTTONWOOD 49.40' W

P.O.T. @ 1 STA. 7+53.61 (@ EXISTING LEVEE)  
 1. FOUND 1/2" BAR  
 2. NAIL AND SHINER IN TOP OF BRACED FENCE POST 49.14' W



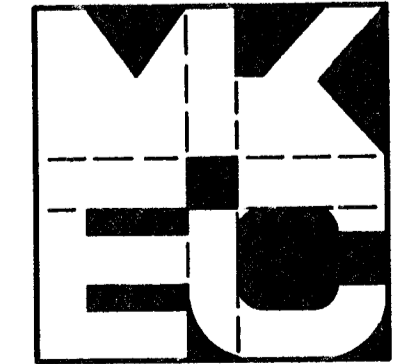
Sta. 1+00.00, @ Levee=  
 Sta. 1+00.00, @ 1=  
 South Property Line

B.M.: "□" ON N.W. CORNER WEST HEADWALL OF PIPE UNDER DIKE (STA. 0+93, 17.5' LT.) ELEV. 1268.27

NOTES:  
 1. THE ORDINARY HIGH WATER MARK (OHWM) ACROSS THE PROJECT SITE IS AT ELEV. 1255 AT BASE LINE STATION 0+00 AND ELEV. 1257 AT STATION 11+89.65.  
 2. THE PROJECT SITE, AND ALL AREA RIVERWARD FROM THE LEVEE IS WITHIN A 100 YEAR FLOODWAY, AS DEFINED BY FEMA.

3. THE AREA SHOWN AS THE LOCATION OF FILL MATERIAL WAS PREVIOUSLY A RELATIVELY FLAT AREA. SOIL TYPE IS RIVER DEPOSITS, PRIMARILY SAND. THE AREA WAS PARTIALLY SUBMERGED BY SHALLOW WATER. GRASSES AND SHRUBS GREW ON DRY PORTIONS OF THE AREA.

B.M.: T-POST AT SOUTH SIDE GRAVEL ROAD (STA. 9+20, 17.4' RT.) ELEV. 1266.29



**CITY OF WICHITA, KS.**  
**ARKANSAS RIVER BANK RESTORATION PLAN**  
**SITE PLAN**  
**EXISTING CONDITIONS**

MID-KANSAS ENGINEERING CONSULTANTS INC.  
 3500 NORTH ROCK ROAD  
 BUILDING #800  
 WICHITA, KANSAS 67226 (316) 636-5566

REVISED 2/23/94

Design	DLM
Drawn by	BDM
Checked by	DLM
Date	1/17/94
Job no.	94008SP1

Sheet 2 of 4