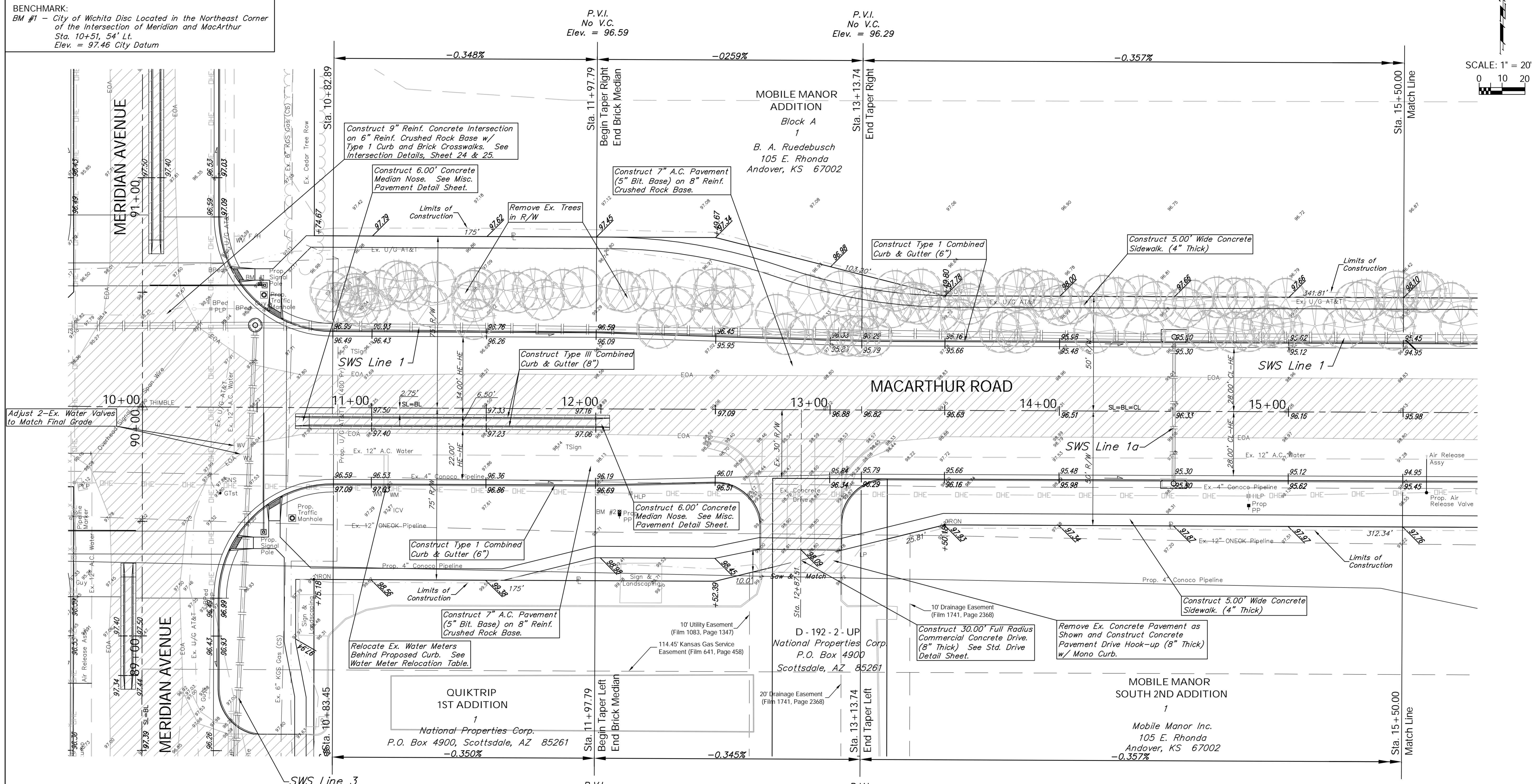
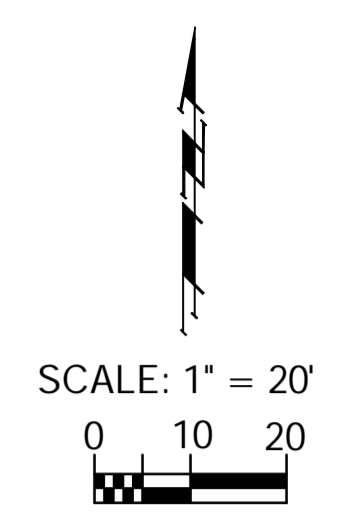


FHWA REGION NO.	STATE	PROJECT NO.	FISCAL YEAR	SHEET NO.	TOTAL SHEETS
7	KANSAS	87 N-0347-01	2007	11	123

BENCHMARK:
 BM #2 - Railroad Spike in the North Face of the First High Line Power Pole East of Meridian Avenue on the South Side of MacArthur Road.
 Sta. 12+05, 44' Rt.
 Elev. = 99.10 City Datum

BENCHMARK:
 BM #1 - City of Wichita Disc Located in the Northeast Corner of the Intersection of Meridian and MacArthur
 Sta. 10+51, 54' Lt.
 Elev. = 97.46 City Datum



Adjust 2-Ex. Water Valves to Match Final Grade

Construct 9" Reinf. Concrete Intersection on 6" Reinf. Crushed Rock Base w/ Type 1 Curb and Brick Crosswalks. See Intersection Details, Sheet 24 & 25.

Construct 6.00' Concrete Median Nose. See Misc. Pavement Detail Sheet.

Construct 7" A.C. Pavement (5" Bit. Base) on 8" Reinf. Crushed Rock Base.

Remove Ex. Trees in R/W

Construct Type 1 Combined Curb & Gutter (6")

Construct 5.00' Wide Concrete Sidewalk. (4" Thick)

Construct Type III Combined Curb & Gutter (8")

Construct 6.00' Concrete Median Nose. See Misc. Pavement Detail Sheet.

Construct Type 1 Combined Curb & Gutter (6")

Construct 7" A.C. Pavement (5" Bit. Base) on 8" Reinf. Crushed Rock Base.

Relocate Ex. Water Meters Behind Proposed Curb. See Water Meter Relocation Table.

Construct 30.00' Full Radius Commercial Concrete Drive. (8" Thick) See Std. Drive Detail Sheet.

Remove Ex. Concrete Pavement as Shown and Construct Concrete Pavement Drive Hook-up (8" Thick) w/ Mono Curb.

Note:
 Pavement, Sidewalks, and Etc. To Be Removed Are Indicated By:

Note:
 Trees/Shrubs to be removed are marked thus:

Drawing File: E:\eng\MacArthur_Land\dwg\Base.dwg [Pax02]
 Project No. 0404E856 CAPITAL IMPROVEMENT PROJECT

MACARTHUR ROAD PAVING
 Sta. 10+00.00 to Sta. 15+50.00
 MACARTHUR ROAD PAVING - MERIDIAN AVENUE TO SENECA STREET

Baughman Company, P.A.
 315 Ellis St., Wichita, KS 67211 P 316-262-7171 F 316-262-0149
 ENGINEERING | SURVEYING | PLANNING | LANDSCAPE ARCHITECTURE

July 2007
 SHEET 11 OF 123