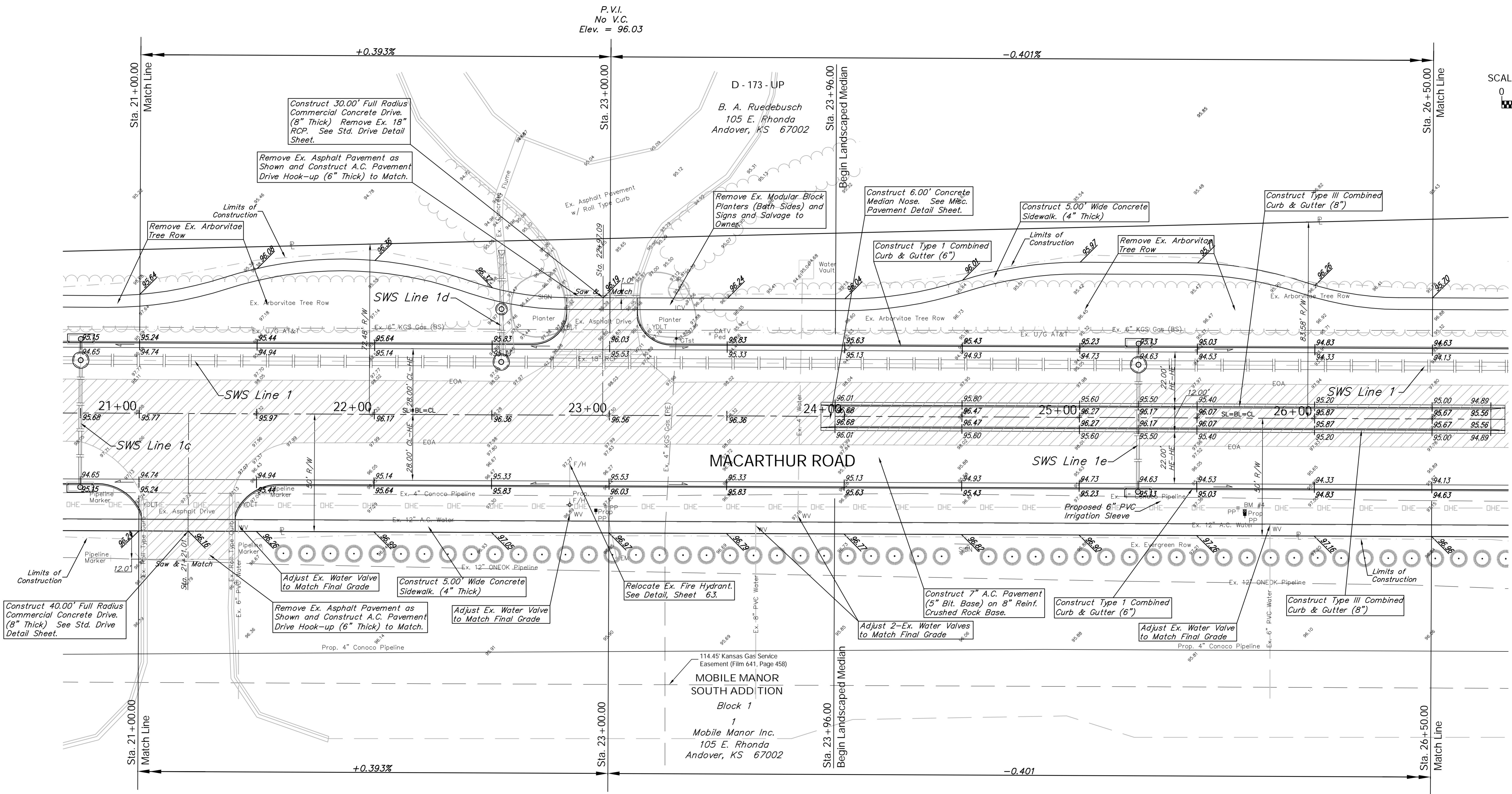
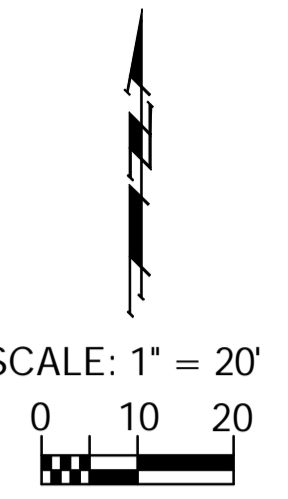


BENCHMARK:
 BM #4 - Railroad Spike in the First High Line Pole West of
 the East Mobile Home Park Drive on the South
 Side of MacArthur
 Sta. 25+70, 40' Rt.
 Elev. = 98.59 City Datum

FHWA REGION NO.	STATE	PROJECT NO.	FISCAL YEAR	SHEET NO.	TOTAL SHEETS
7	KANSAS	87 N-0347-01	2007	13	123



Construct 40.00' Full Radius Commercial Concrete Drive. (8" Thick) See Std. Drive Detail Sheet.

Remove Ex. Asphalt Pavement as Shown and Construct A.C. Pavement Drive Hook-up (6" Thick) to Match.

Construct 5.00' Wide Concrete Sidewalk. (4" Thick)

Relocate Ex. Fire Hydrant. See Detail, Sheet 63.

Construct 7" A.C. Pavement (5" Bit. Base) on 8" Reinf. Crushed Rock Base.

Construct Type I Combined Curb & Gutter (6")

Construct Type III Combined Curb & Gutter (8")

Note:
 Pavement, Sidewalks, and Etc. To Be Removed Are Indicated By:



Note:
 Trees/Shrubs to be removed are marked thus:



Drawing File: E:\eng\MacArthur\Land\dwg\Base.dwg [Pw04]
 Project No. 0404E856 CAPITAL IMPROVEMENT PROJECT
 Design: TPV
 Drawn: STAFF
 Approved: TPV
 Scale: NOTED

MACARTHUR ROAD PAVING
 Sta. 21+00.00 to Sta. 26+50.00
 MACARTHUR ROAD PAVING - MERIDIAN AVENUE TO SENECA STREET

Baughman Company, P.A.
 315 Ellis St., Wichita, KS 67211 P 316-262-7171 F 316-262-0149
 ENGINEERING | SURVEYING | PLANNING | LANDSCAPE ARCHITECTURE

July 2007
 SHEET 13 OF 123