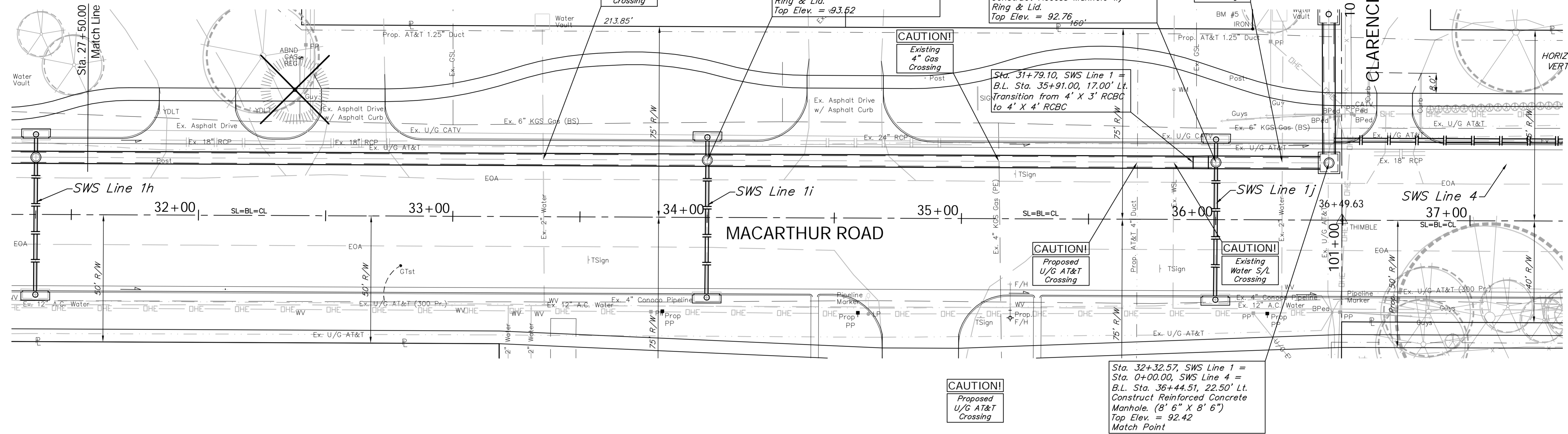


BENCHMARK:  
 BM #5 - City of Wichita Disc Located 0.5 miles East of Meridian on the North Side of MacArthur Sta. 36+07, 84' Lt. Elev. = 93.61 City Datum

Install 483 L.F. Sand Back Fill, Flushed & Vibrated, to the Top of the RCBC from Sta. 27+50.00 to Sta. 32+32.57

FHWA REGION NO.	STATE	PROJECT NO.	FISCAL YEAR	SHEET NO.	TOTAL SHEETS
7	KANSAS	87 N-0347-01	2007	31	123



SCALE:  
 HORIZONTAL: 1" = 20'  
 VERTICAL: 1" = 5'

