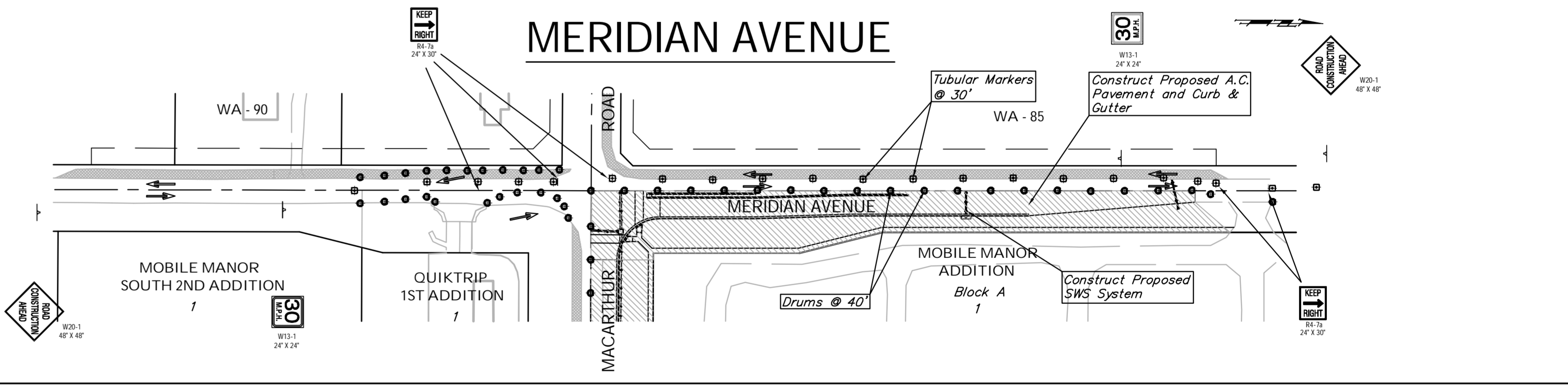
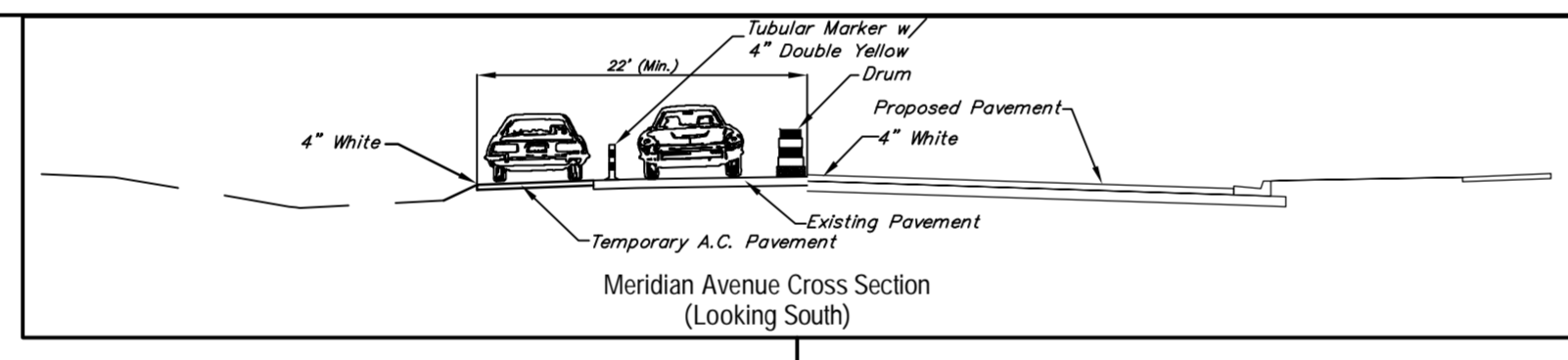
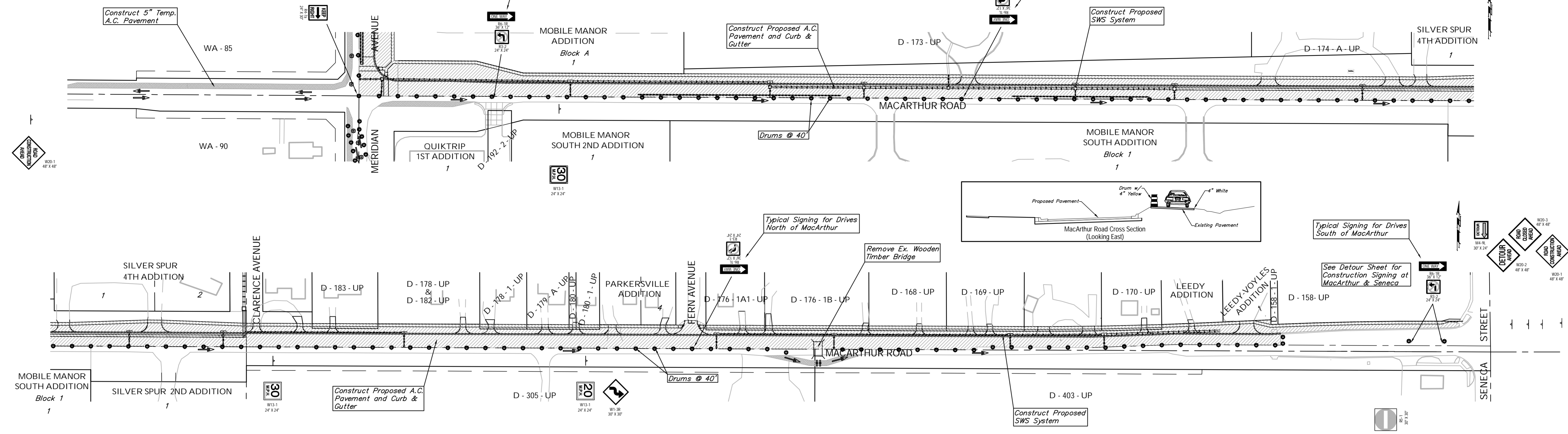


FHW A REGION NO.	STATE	PROJECT NO.	FISCAL YEAR	SHEET NO.	TOTAL SHEETS
7	KANSAS	87 N-0347-01	2007	78	123

MACARTHUR ROAD



LEGEND

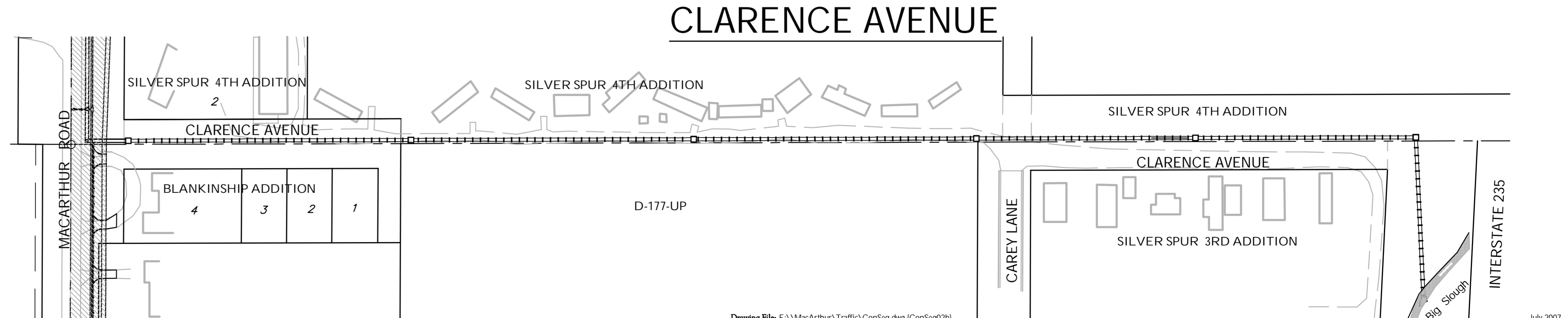
	Work Area		Temp. A.C. Pavement
	Reflectorized Drum (40' Spacing)		Tubular Marker (30' Spacing)
	Type III Barricade		Traffic Flow Pattern

PHASE 2b

Continue constructing SWS system and new pavement on the north half of MacArthur from Meridian to Seneca. Move traffic to the west on Meridian and construct the northeast quadrant of the MacArthur-Meridian intersection. Construct new pavement on the east half of Meridian north of MacArthur. Construct 11' wide Temporary A.C. Pavement lane on the north side of MacArthur west of Meridian. Begin installation of Signal System at the Intersection. Traffic on MacArthur between Meridian and Seneca is to be east bound only on existing pavement. Two-way traffic on Meridian is to be carried on both existing and temporary pavement.

PAVEMENT QUANTITIES FOR PHASE 2b

Temporary A.C. Pavement - 745 S.Y.
FOR INFORMATION ONLY. Cost to be SUBSIDIARY to the Lump Sum Bid Item "Traffic Control (Construction)."



Drawing File: E:\MacArthur\Traffic\ConSeq.dwg (ConSeq02b)

Project No. 04-04-E856 CAPITAL IMPROVEMENT PROJECT
MACARTHUR ROAD CONSTRUCTION
 SEQUENCING PLAN - PHASE 2b
 MACARTHUR ROAD PAVING - MERIDIAN AVENUE TO SENECA STREET

Baughman Company, P.A.
 315 Ellis St. Wichita, KS 67211 P 316-262-7271 F 316-262-0149
 ENGINEERING | SURVEYING | PLANNING | LANDSCAPE ARCHITECTURE

July 2007
 SHEET 78 OF 123