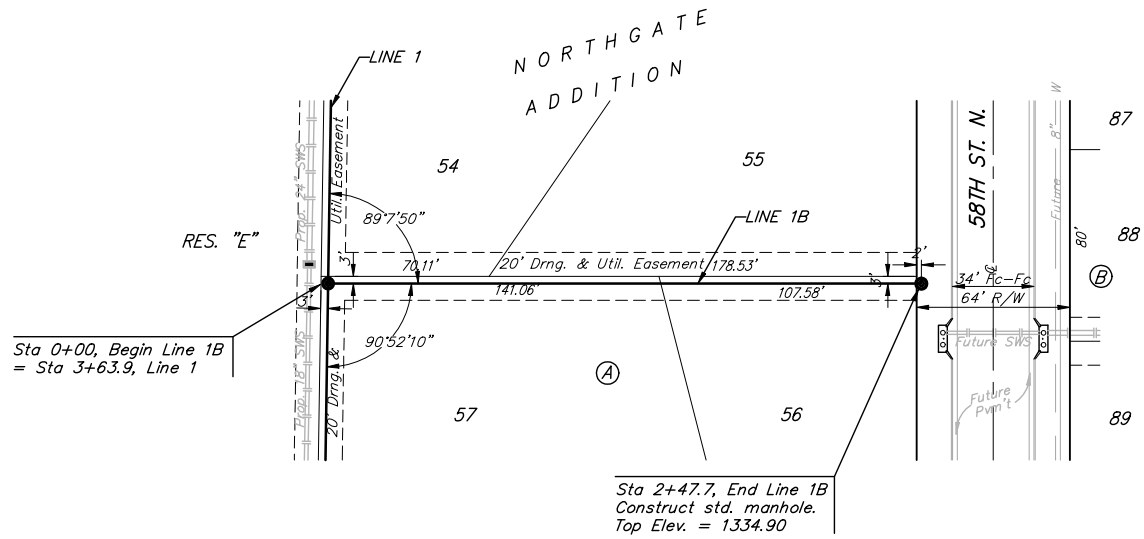
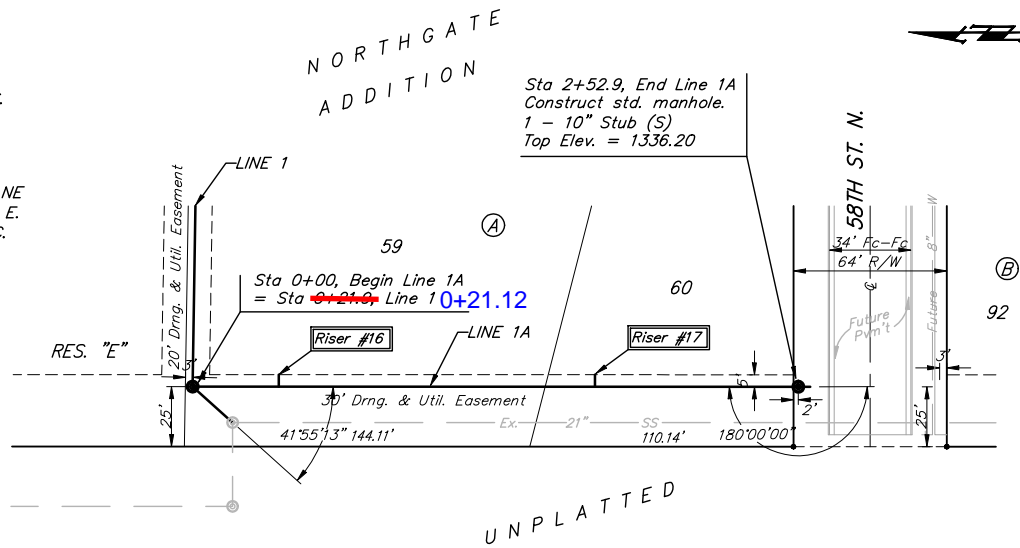


BENCHMARKS:
 BM #1: BENT 60d NAIL IN LIGHT POLE, 55' SSW. OF THE E1/4 COR., SEC. 13, TWP. 26-S, R-1-W.
 ELEV. = 1336.54 NGVD29

BM #2: RAILROAD SPIKE IN E. FACE OF N. "H" POLE, 60'± S. OF N. LINE, S1/2, NE1/4, SEC. 13, TWP. 26-S, R-1-W.
 ELEV. = 1335.93 NGVD29

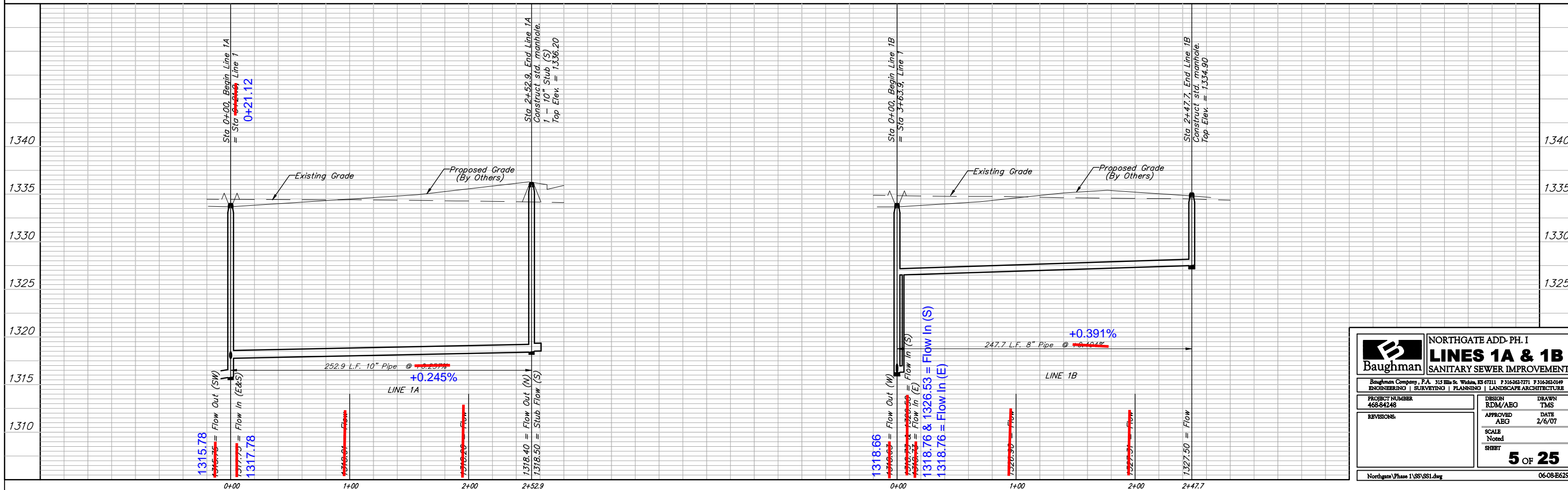
BM #3: "□" CUT ON TOP OF NE COR. OF WATER VAULT, 437'± E. & 54'± N. OF S1/4 COR., SEC. 13, TWP. 26-S, R-1-W.
 ELEV. = 1334.81 NGVD29



SEWER SERVICE TABLE

NUMBER	TYPE	LOCATION			STATION\ DIRECTION	FOR INFORMATION ONLY	
		LOT NO.	BLOCK NO.	LINE NO.		APPROXIMATE LENGTH 4" PIPE	VERTICAL
16	10" X 4" Tee	59	A	1A	0+36/Lt.	13.0'	5.0'
17	10" X 4" Tee	60	A	1A	1+68/Lt.	14.0'	5.0'

NOTE: Vertical Riser Pipe shall be extended to 2' minimum above ground water elevation and 4' maximum below proposed ground elevation.



Baughman NORTHGATE ADD. PH. I
LINES 1A & 1B
 SANITARY SEWER IMPROVEMENTS

PROJECT NUMBER: 468-84248
 DESIGN: RDM/ABG
 DRAWN: TMS
 APPROVED: ABG
 DATE: 2/6/07
 SCALE: Noted
 SHEET: 5 OF 25

Northgate Phase 1\SS\SS1.dwg 06-08-B629