

SEWER SERVICE TABLE

NUMBER	TYPE	LOCATION				FOR INFORMATION ONLY	
		LOT NO.	BLOCK NO.	LINE NO.	STATION \ DIRECTION	APPROXIMATE LENGTH 4" PIPE	VERTICAL
33	10" X 4" Tee	32	A	3	0+85/Rt.	10.5'	7.0'
34	10" X 4" Tee	21	A	3	1+05/Lt.	10.0'	13.0'
35	10" X 4" Tee	22	A	3	2+31/Lt.	8.0'	13.0'
36	10" X 4" Tee	24	A	3	3+00/Lt.	8.0'	13.0'
37	10" X 4" Tee	17	D	3	5+65.1/Lt.	8.0'	7.0'
38	10" X 4" Tee	15	D	3	7+15/Lt.	6.5'	13.0'

NOTE: Vertical Riser Pipe shall be extended to 2' minimum above ground water elevation and 4' maximum below proposed ground elevation.

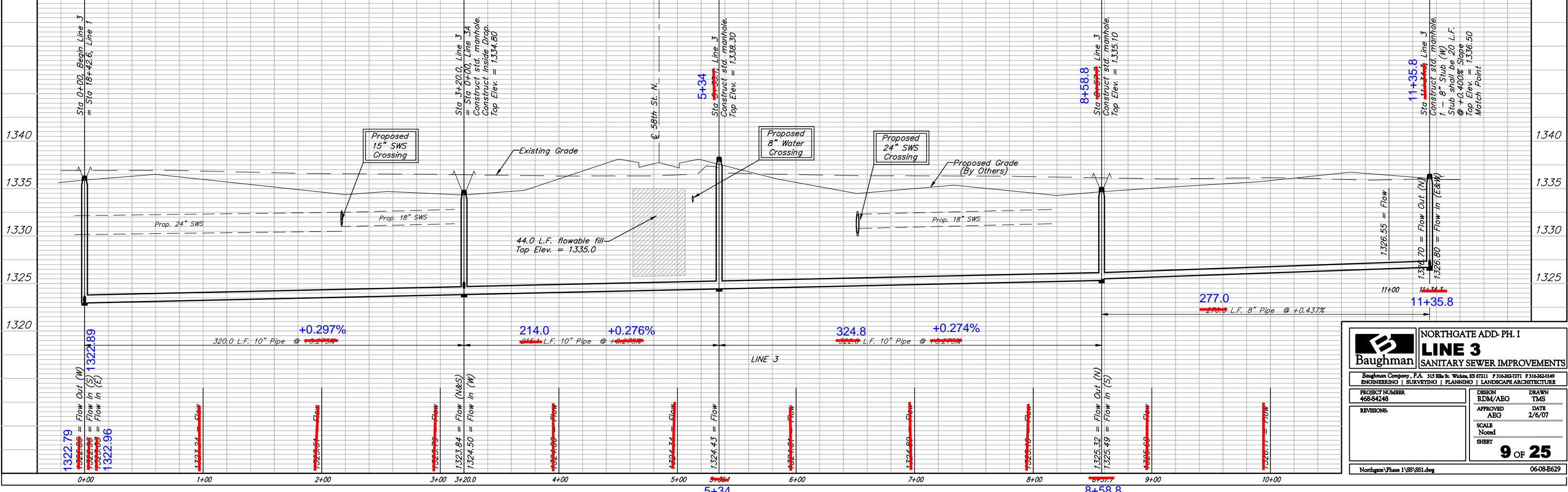
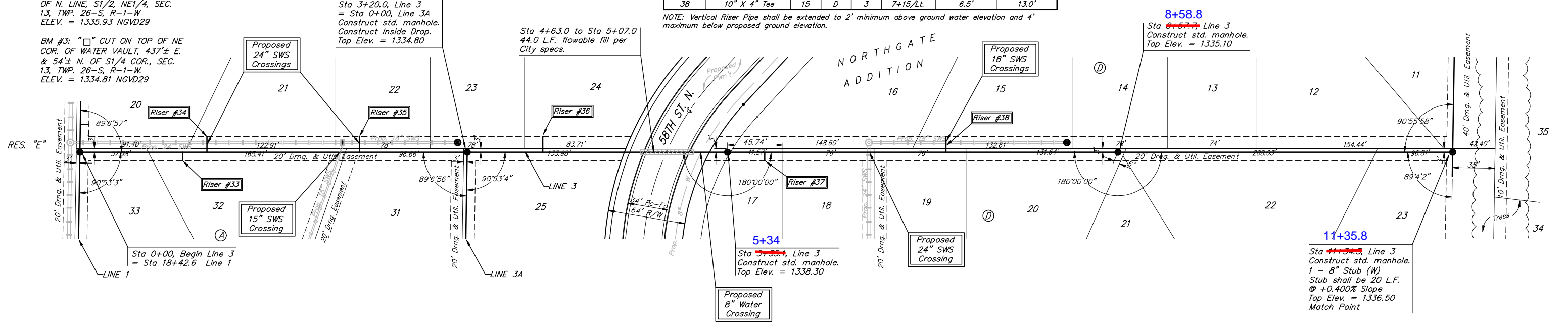
Remove trees only as necessary for sanitary sewer construction and only with permission of Developer or Baughman Co. Any trees that need to be trimmed shall be side trimmed with a chainsaw. Cost of removal and/or trimming shall be incidental to lump sum bid item "Site Clearing & Restoration".

Scale: 1" = 40' Horizontal
1" = 5' Vertical
• = Iron

BENCHMARKS:
BM #1: BENT 60d NAIL IN LIGHT POLE, 55' SSW OF THE E1/4 COR., SEC. 13, TWP. 26-S, R-1-W.
ELEV. = 1336.54 NGVD29

BM #2: RAILROAD SPIKE IN E. FACE OF N. "H" POLE, 60'± S. OF N. LINE, S1/2, NE1/4, SEC. 13, TWP. 26-S, R-1-W.
ELEV. = 1335.93 NGVD29

BM #3: "□" CUT ON TOP OF NE COR. OF WATER VAULT, 437'± E. & 54'± N. OF S1/4 COR., SEC. 13, TWP. 26-S, R-1-W.
ELEV. = 1334.81 NGVD29



Baughman NORTHGATE ADD. PH. I
LINE 3
SANITARY SEWER IMPROVEMENTS

Baughman Company, P.A. 315 Ellis St. Wichita, KS 67211 P 316-262-7771 F 316-262-0149
ENGINEERING | SURVEYING | PLANNING | LANDSCAPE ARCHITECTURE

PROJECT NUMBER: 468-84248
DESIGN: RDM/ABG
DRAWN: TMS
APPROVED: ABG
DATE: 2/6/07
SCALE: Noted
SHEET: 9 OF 25

Northgate Phase 1\SS\SS1.dwg 06-08-B629