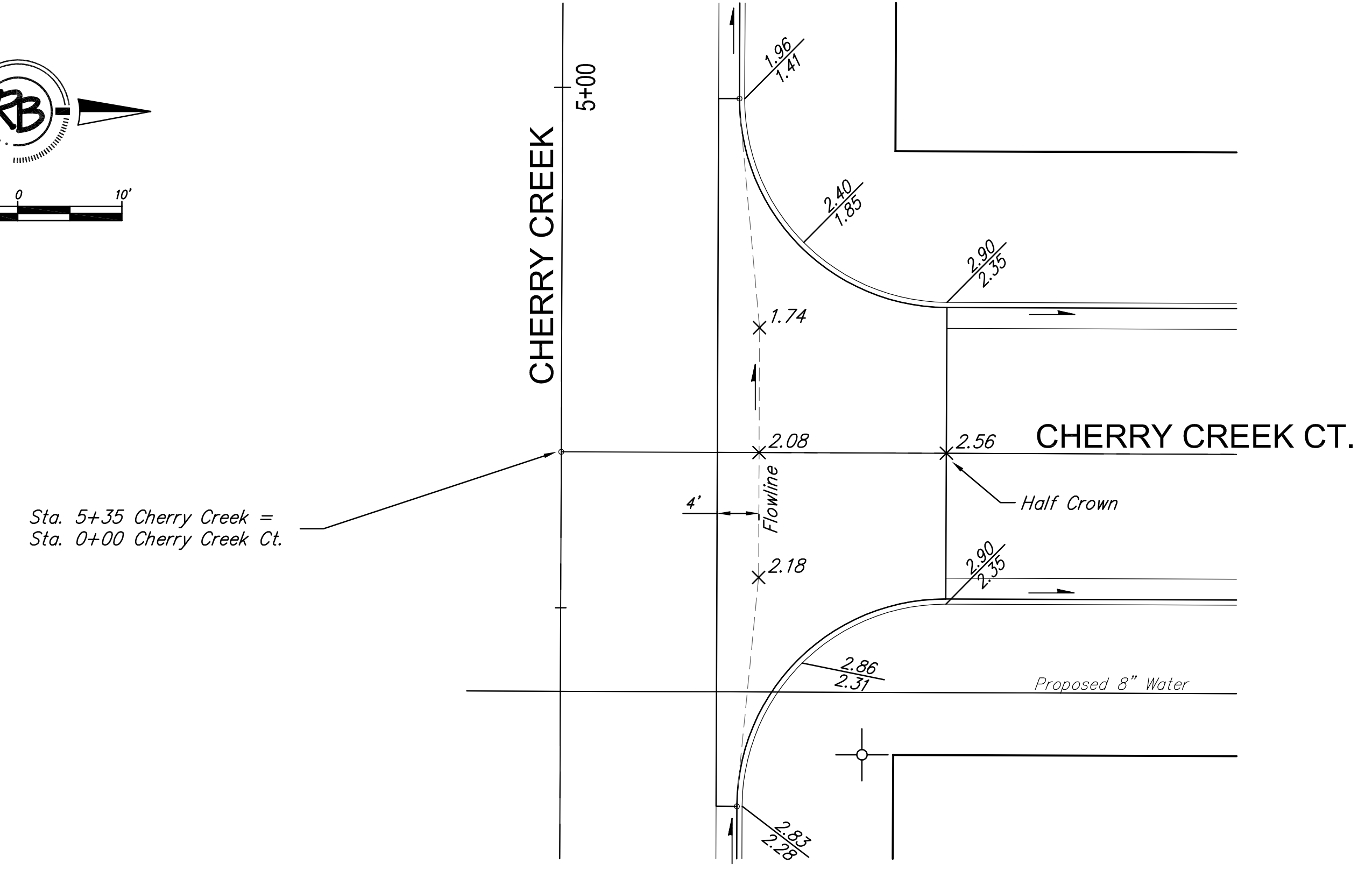
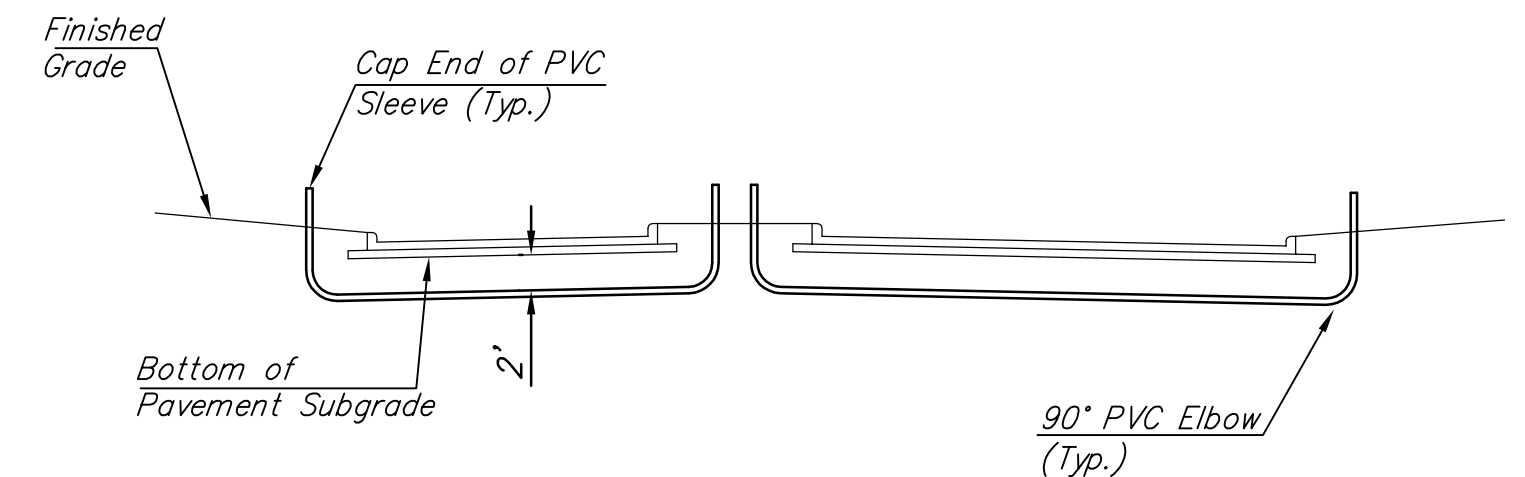
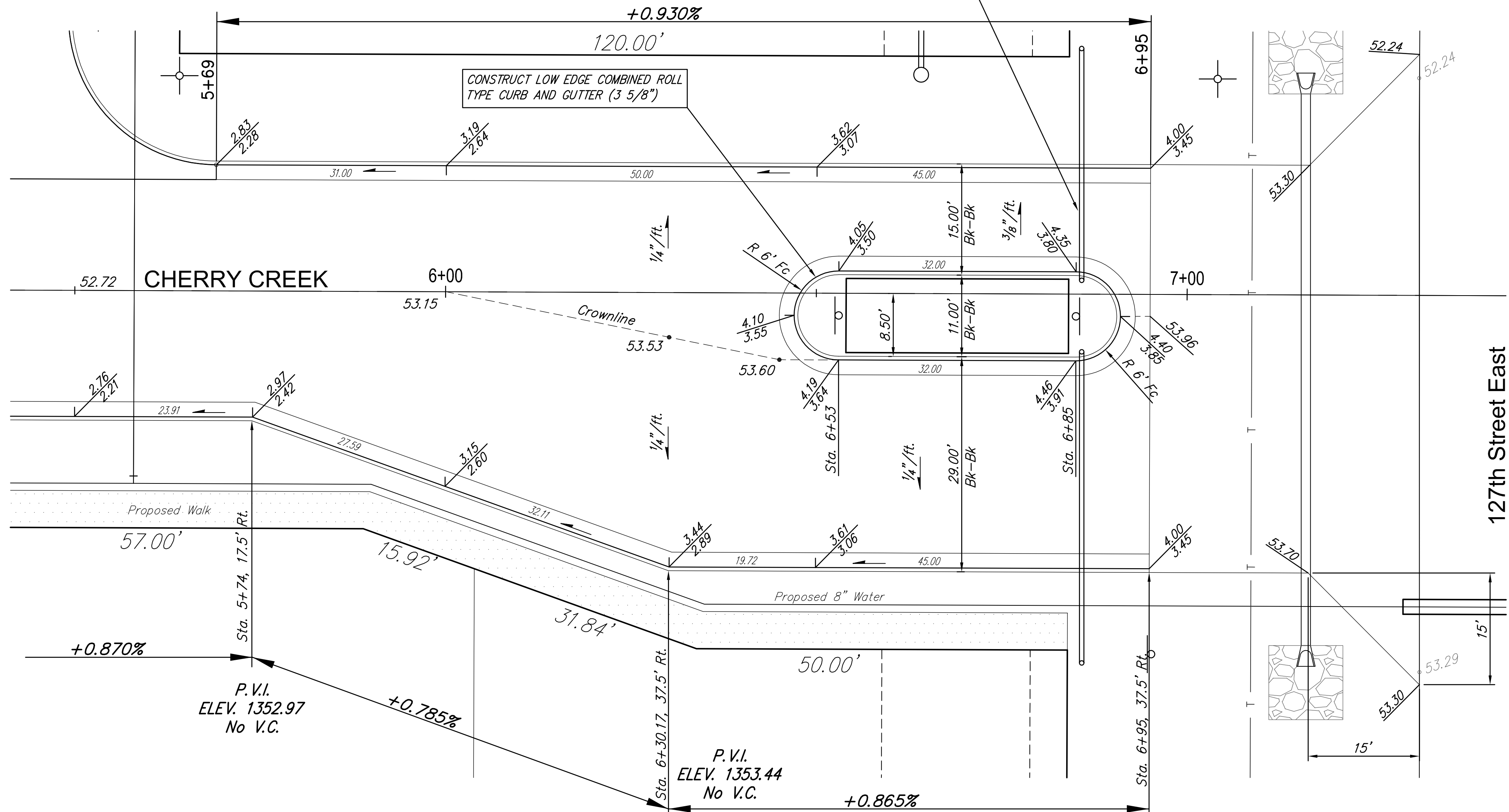


Sta. 2+37 Cherry Creek =  
Sta. 0+00 Cherry Creek Ct.

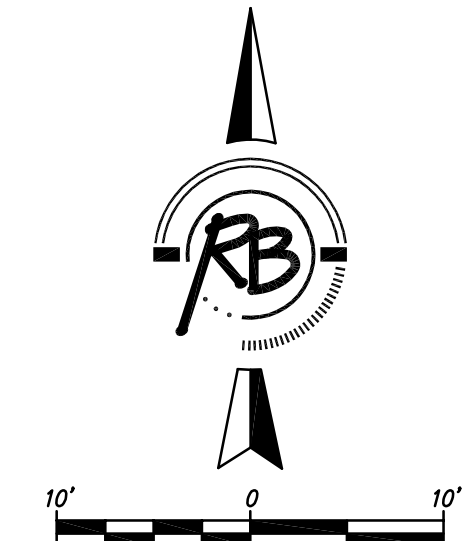


Sta. 5+35 Cherry Creek =  
Sta. 0+00 Cherry Creek Ct.

STA 6+85, 7.5' TO 47.5' RT  
INSTALL 40 L.F. 4" GREY ELECTRICAL PVC  
STA 6+85, 2.0' TO 32.0' LT  
INSTALL 30 L.F. 4" GREY ELECTRICAL PVC  
SEE PVC INSTALLATION DETAIL THIS SHEET



PVC Sleeve Detail  
\* Not to Scale



CONSTRUCT COMBINED ROLL TYPE CURB AND GUTTER (3 5/8") ON ALL CURB SHOWN.

<b>TARA CREEK ADDITION Valley Gutter Details WICHITA, KANSAS</b>		
	<b>Ruggles &amp; Bohm, P.A.</b> Engineering, Surveying, Land Planning	
	924 North Main Wichita, Kansas 67203 www.rbkansas.com	
(316) 264-8008 (316) 264-4621 fax E-mail: info@rbkansas.com	DESIGN CMB DRAWN RA REVIEW RA UTILITY DATE Nov. 20, 2007	PROJECT NUMBER SHEET 9 OF 23
DRAWING FILE CulDeSac Details	PROJECT NUMBER	DATE Nov. 20, 2007