

CURVE #1 LEFT
Curve Data Based on Centerline
Rad. = 283' Delta = 39° 39' 04" Tangent = 102.03'
Arc = 195.85' L.C. = 191.96' Def/Pl. = 6.07370 Min.

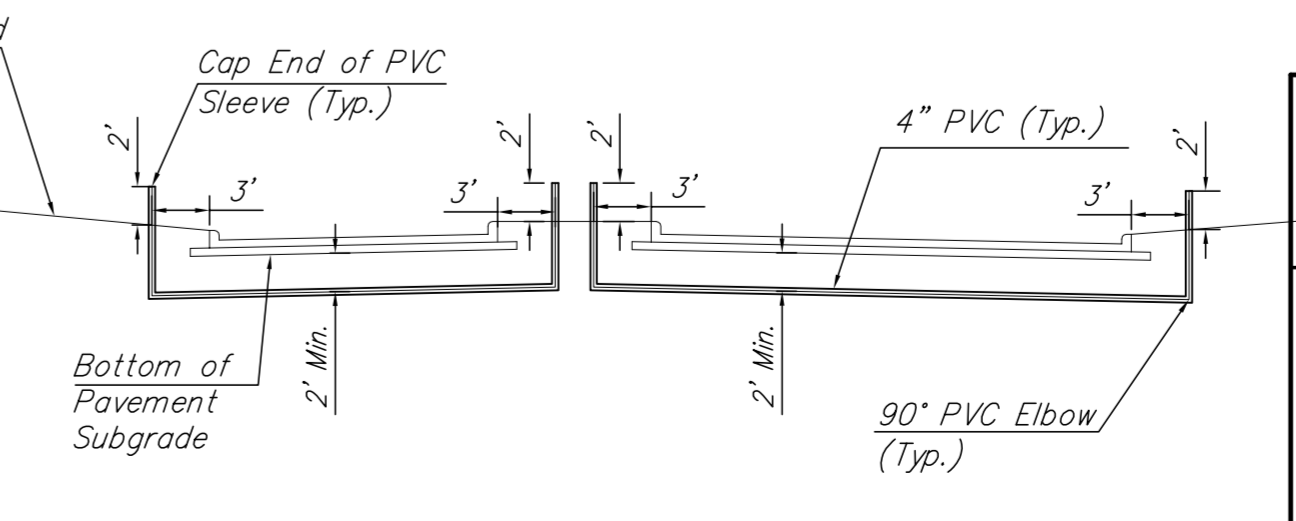
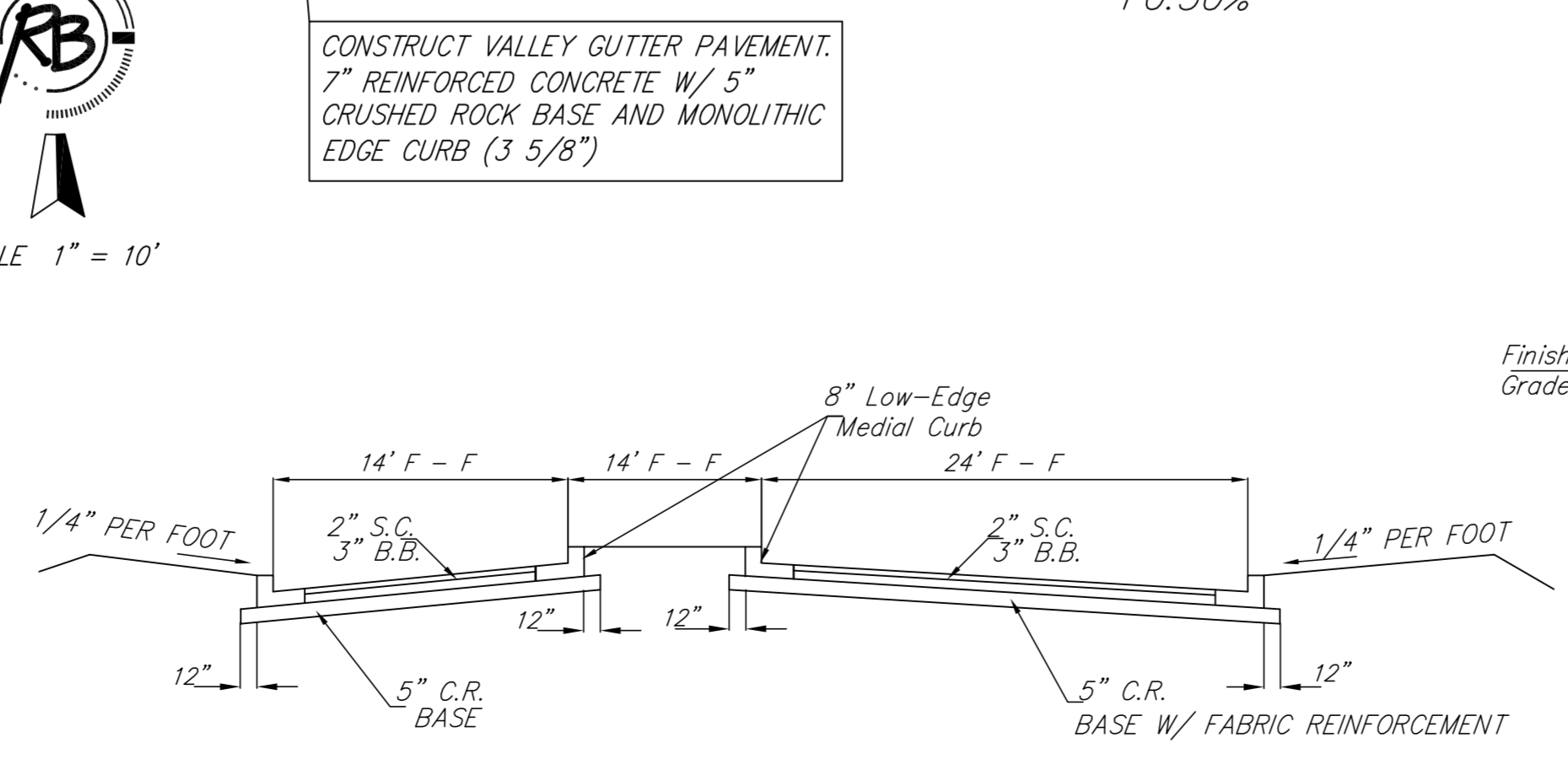
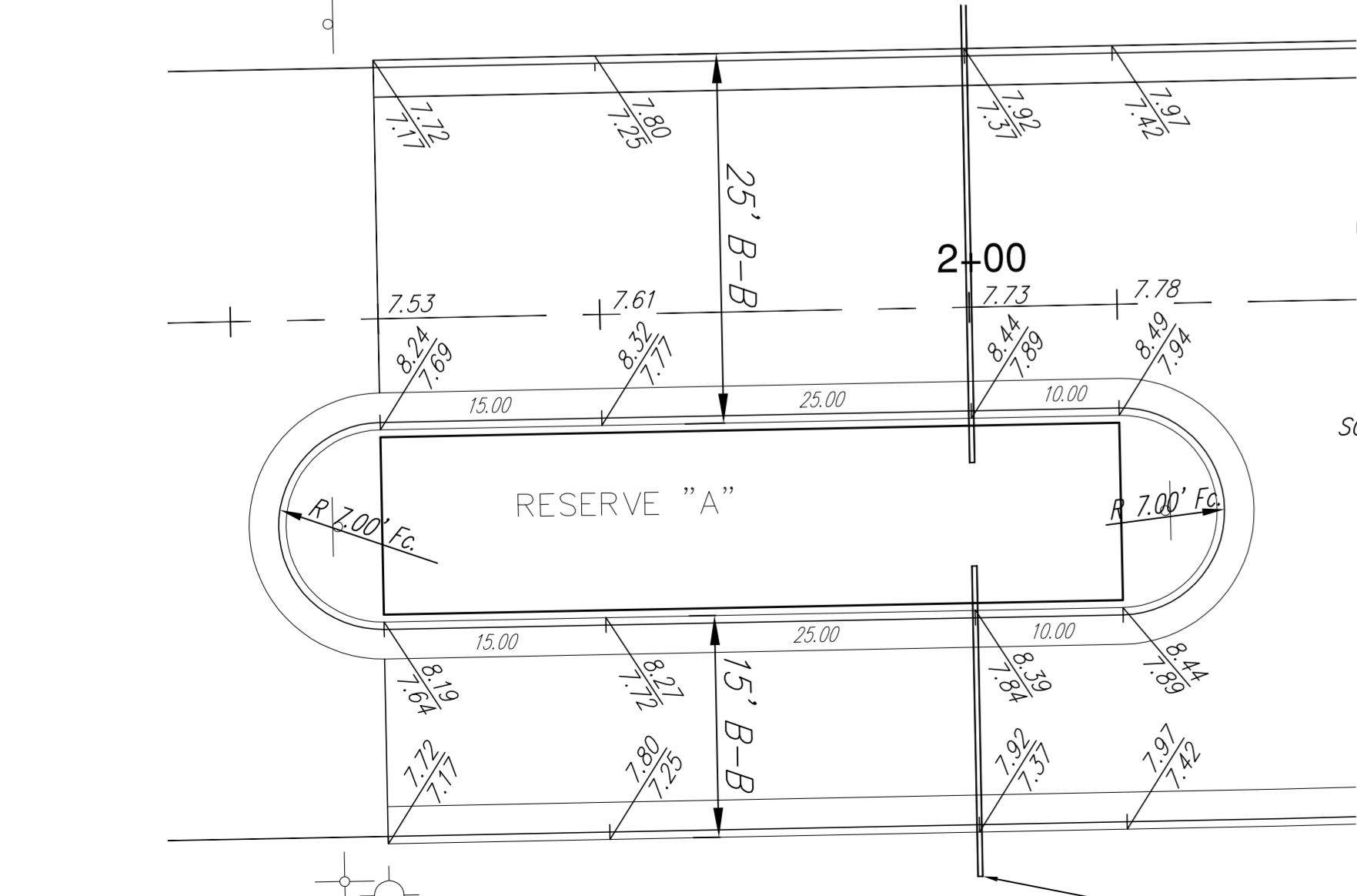
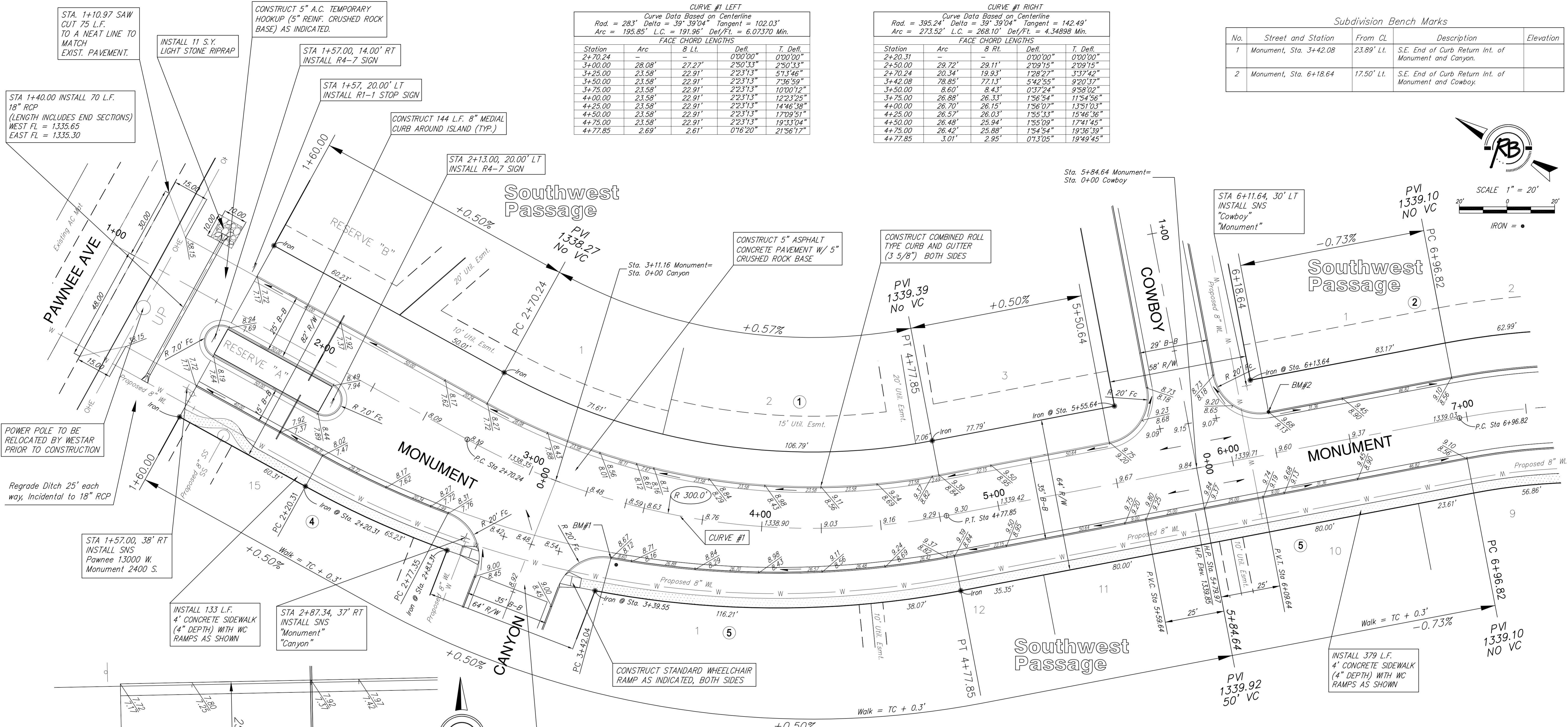
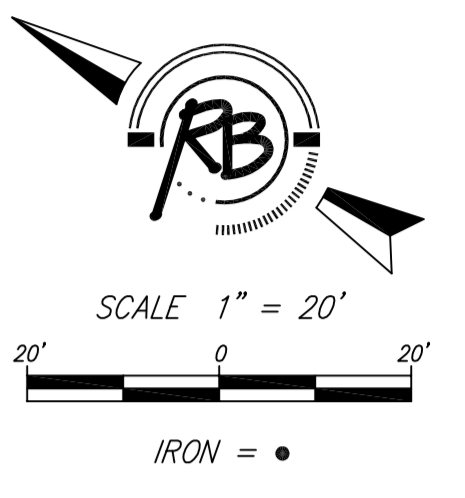
Station	FACE CHORD LENGTHS			
	Arc	B Lt.	Defl.	T. Defl.
2+70.24	-	-	0'00"00"	0'00"00"
3+00.00	28.08'	27.27'	2'50"33"	2'50"33"
3+25.00	23.58'	22.91'	2'23"13"	5'13"46"
3+50.00	23.58'	22.91'	2'23"13"	7'36"59"
3+75.00	23.58'	22.91'	2'23"13"	10'00"12"
4+00.00	23.58'	22.91'	2'23"13"	12'23"25"
4+25.00	23.58'	22.91'	2'23"13"	14'46"38"
4+50.00	23.58'	22.91'	2'23"13"	17'09"51"
4+75.00	23.58'	22.91'	2'23"13"	19'33"04"
4+77.85	2.69'	2.61'	0'16"20"	21'56"17"

CURVE #1 RIGHT
Curve Data Based on Centerline
Rad. = 395.24' Delta = 39° 39' 04" Tangent = 142.49'
Arc = 273.52' L.C. = 268.10' Def/Pl. = 4.34898 Min.

Station	FACE CHORD LENGTHS			
	Arc	B Rt.	Defl.	T. Defl.
2+20.31	-	-	0'00"00"	0'00"00"
2+50.00	29.72'	29.11'	2'09"15"	2'09"15"
2+70.24	20.34'	19.93'	1'28"27"	3'37"42"
3+42.08	78.85'	77.13'	5'42"55"	9'20"32"
3+50.00	8.60'	8.43'	0'37"24"	9'58"02"
3+75.00	26.88'	26.33'	1'56"54"	11'54"56"
4+00.00	26.70'	26.15'	1'56"07"	13'51"03"
4+25.00	26.57'	26.03'	1'55"33"	15'46"36"
4+50.00	26.48'	25.94'	1'55"09"	17'41'45"
4+75.00	26.42'	25.88'	1'54'54"	19'36'39"
4+77.85	3.01'	2.95'	0'13"05"	19'49'45"

Subdivision Bench Marks

No.	Street and Station	From CL	Description	Elevation
1	Monument, Sta. 3+42.08	23.89' Lt.	S.E. End of Curb Return Int. of Monument and Canyon.	
2	Monument, Sta. 6+18.64	17.50' Lt.	S.E. End of Curb Return Int. of Monument and Cowboy.	



NOTE: ROLL TYPE CURB AND GUTTER TO BE CONSTRUCTED ALONG PAVEMENT DEPICTED ON THIS SHEET

Southwest Passage Addition Monument WICHITA, KANSAS

Ruggles & Bohm, P.A.
Engineering, Surveying, Land Planning

924 North Main
Wichita, Kansas 67203
www.rbkansas.com

(316) 264-8008
(316) 264-4621 fax
E-mail: info@rbkansas.com

DESIGN: KWL
DRAWN: JDM
REVIEW: [blank]
UTILITY: [blank]
DATE: Nov. 28, 2007

SHEET 4 OF 36