

FHWA REGION NO.	STATE	PROJECT NO.	YEAR	SHEET NO.	TOTAL SHEETS
7	KANSAS	54-87 K-6657-01	2002	33	1122

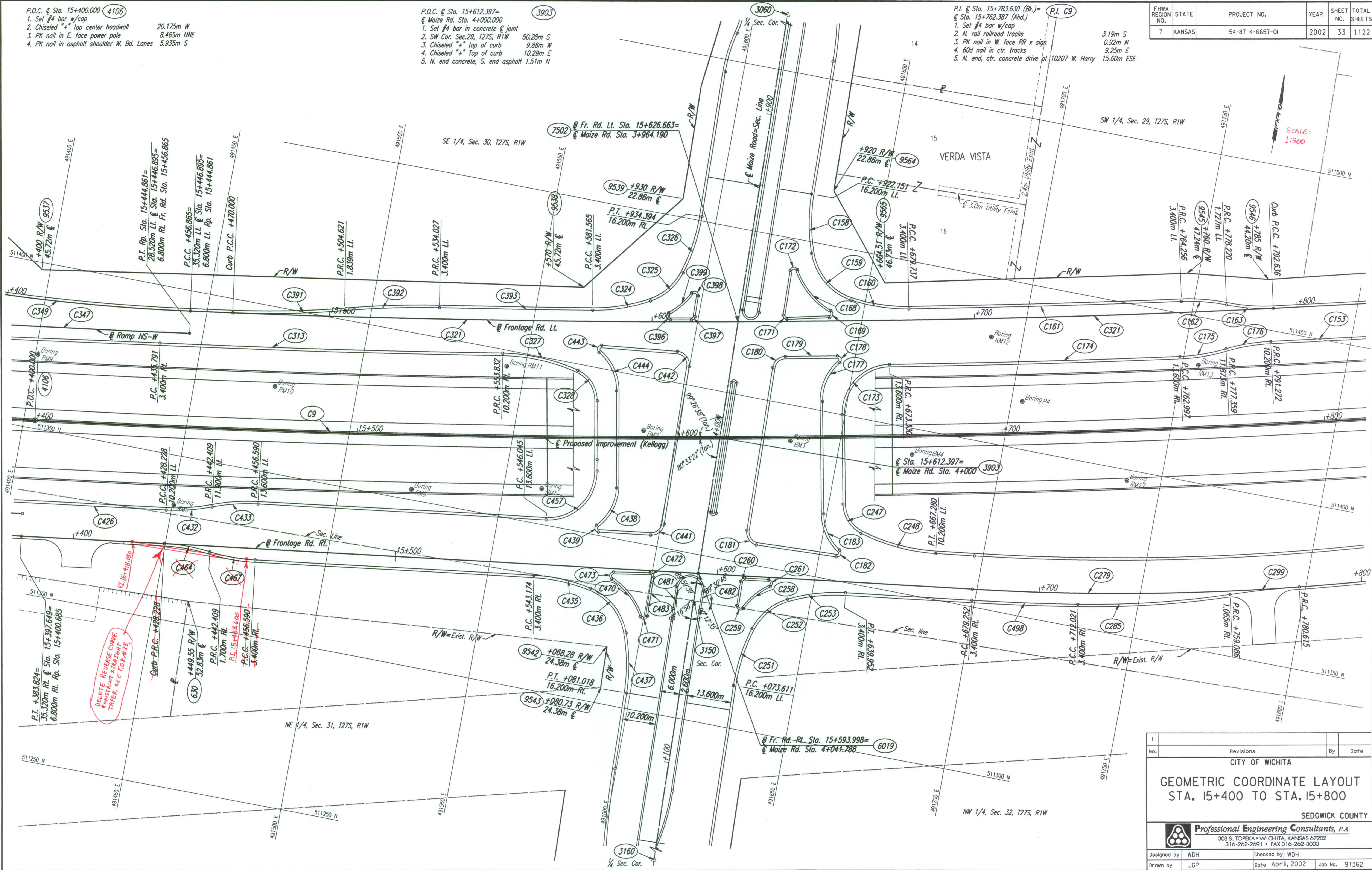
P.O.C. @ Sta. 15+400.000 (4106)
 1. Set #4 bar w/cap
 2. Chiseled "+" top center headwall 20.175m W
 3. PK nail in E. face power pole 8.465m NNE
 4. PK nail in asphalt shoulder W. Bd. Lanes 5.935m S

P.O.C. @ Sta. 15+612.397= (3903)
 @ Maize Rd. Sta. 4+000.000
 1. Set #4 bar in concrete @ joint
 2. SW Cor. Sec. 29, T27S, R1W 50.28m S
 3. Chiseled "+" top of curb 9.88m W
 4. Chiseled "+" Top of curb 10.29m E
 5. N. end concrete, S. end asphalt 1.51m N

P.I. @ Sta. 15+783.630 (Bk.) = (P.I. C9)
 @ Sta. 15+762.387 (Ahd.)
 1. Set #4 bar w/cap
 2. N. rail railroad tracks 3.19m S
 3. PK nail in W. face RR x sign 0.92m N
 4. 60d nail in ctr. tracks 9.25m E
 5. N. end, ctr. concrete drive at 10207 W. Harry 15.60m ESE

DATE	BY

DNMR: JPS OPER: JGP SCALE: 1:500
 1/1997/97362/GEOMCOORD/G154.DGN 11-15-1999 15:54:32 LAST REV: 12-20-01 BY: JGP



SCALE: 1:500

Revisions		By	Date

CITY OF WICHITA
GEOMETRIC COORDINATE LAYOUT
 STA. 15+400 TO STA. 15+800
 SEDGWICK COUNTY

Professional Engineering Consultants, P.A.
 303 S. TOPEKA • WICHITA, KANSAS 67202
 316-262-2691 • FAX 316-262-3003

Designed by	WDH	Checked by	WDH
Drawn by	JGP	Date	April, 2002
		Job No.	97362