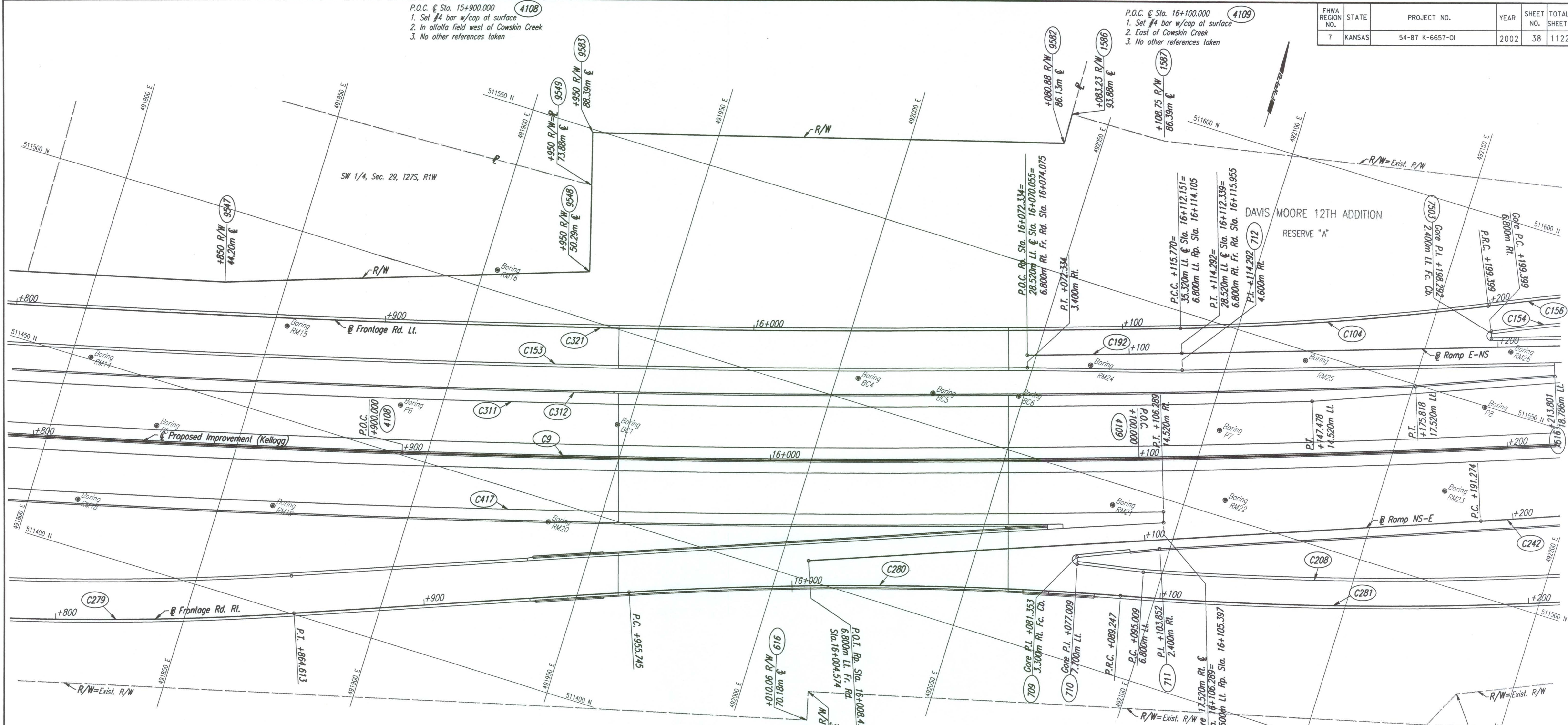


FHWA REGION NO.	STATE	PROJECT NO.	YEAR	SHEET NO.	TOTAL SHEETS
7	KANSAS	54-87 K-6657-01	2002	38	1122

P.O.C. @ Sta. 15+900.000 (4108)
 1. Set #4 bar w/cap at surface
 2. In alfalfa field west of Cowskin Creek
 3. No other references taken

P.O.C. @ Sta. 16+100.000 (4109)
 1. Set #4 bar w/cap at surface
 2. East of Cowskin Creek
 3. No other references taken

DATE	
BY	
REFERENCES NOTED	
REFERENCES CHECKED	



POINT NO.	NORTH COORDINATE	EAST COORDINATE
613	511473.138	492185.774
614	511462.871	492180.582
615	511421.358	492017.619
616	511413.974	492019.500
704	511455.114	492007.279
712	511534.898	492088.945
1586	511592.358	492039.813
1587	511593.032	492065.810
4108	511450.686	491893.332
4109	511508.319	492084.822
7000	512171.630	494012.183
7503	511568.176	492166.389
7516	511563.352	492185.859
9547	511480.704	491833.983
9548	511512.473	491927.650
9549	511535.152	491921.157
9582	511584.277	492040.031
9583	511549.101	491917.164

CURVE NO.	P.C. COORDINATES		P.I. COORDINATES		P.T. COORDINATES		C.C. COORDINATES	
	NORTH	EAST	NORTH	EAST	NORTH	EAST	NORTH	EAST
C9	511322.583	491023.627	511343.357	491788.145	511665.535	492481.773	515021.218	490923.123
C104	511545.651	492085.153	511558.922	492124.846	511576.262	492162.937	512304.367	491831.482
C153	511446.585	491775.616	511479.495	491913.612	511522.945	492048.660	515021.218	490923.123
C154	511570.073	492165.755	511592.309	492214.599	511607.821	492265.976	510841.968	492497.210
C156	511576.262	492162.937	511598.687	492212.197	511614.331	492264.011	510841.968	492497.210
C192	511526.182	492047.619	511532.608	492067.590	511539.261	492087.486	515021.218	490923.123
C242	511519.724	492178.280	511524.028	492189.672	511528.471	492201.010	513390.635	491471.390
C279	511355.365	491698.633	511367.392	491790.950	511400.297	491878.039	512148.661	491595.283
C280	511432.507	491963.289	511456.135	492025.824	511471.229	492090.948	510497.052	492316.734
C281	511471.229	492090.948	511493.438	492186.774	511533.893	492276.435	512445.406	491865.163
C311	511346.413	491203.432	511382.501	491676.534	511537.241	492125.068	515021.218	490923.123
C312	511353.775	491255.569	511395.458	491715.406	511549.378	492150.717	515021.218	490923.123
C321	511393.870	491444.879	511440.903	491771.857	511545.651	492085.153	515021.218	490923.123
C417	511319.650	491233.050	511356.634	491674.765	511496.521	492095.374	515021.218	490923.123

NO.	ALIGNMENT	P.I. STATION	Δ	R	T	L	E
C104	Fr. Rd. Lt.	16+157.622	5° 59' 22"	800.000	41.853	83.629	1.094
C153	Fr. Rd. Lt.		4° 25' 18"	3674.880	141.866	283.591	2.737
C154	Fr. Rd. Lt.		7° 40' 33"	800.000	53.668	107.175	1.798
C156	Fr. Rd. Lt.	16+253.523	7° 40' 33"	806.800	54.124	108.086	1.813
C192	Ramp E-NS	16+093.313	0° 39' 17"	3671.480	20.979	41.958	0.060
C208	Fr. Rd. Rt.		10° 54' 20"	993.200	94.808	189.043	4.515
C242	Ramp NS-E	16+203.452	0° 41' 52"	2000.000	12.178	24.355	0.037
C279	Fr. Rd. Rt.	15+772.349	13° 16' 32"	800.000	93.097	185.361	5.399
C280	Fr. Rd. Rt.	16+022.595	7° 38' 57"	1000.000	66.850	133.502	2.232
C281	Fr. Rd. Rt.	16+187.612	11° 14' 08"	1000.000	98.365	196.100	4.826
C311	US-54		14° 40' 19.3"	3685.480	474.476	943.760	30.417
C312	US-54		14° 17' 36"	3682.480	461.722	918.650	28.833
C321	Fr. Rd. Lt.	15+787.208	10° 18' 06"	3664.680	330.343	658.905	14.859
C417	US-54		13° 36' 36"	3714.520	443.261	882.349	26.354

Revisions		By	Date
CITY OF WICHITA			
GEOMETRIC COORDINATE LAYOUT STA. 15+800 TO STA. 16+200			
SEDGWICK COUNTY			
Professional Engineering Consultants, P.A. 303 S. TOPEKA • WICHITA, KANSAS 67202 316-262-2991 • FAX 316-262-3003			
Designed by	WDH	Checked by	WDH
Drawn by	JGP	Date	April, 2002
		Job No.	97362

DSNR: JPS OPER: JGP SCALE: 1:500
 4/1997/97362/GEOMCOORD/G158.DGN 11-16-1999 10:52:34 LAST REV: 12-20-01 BY: JGP