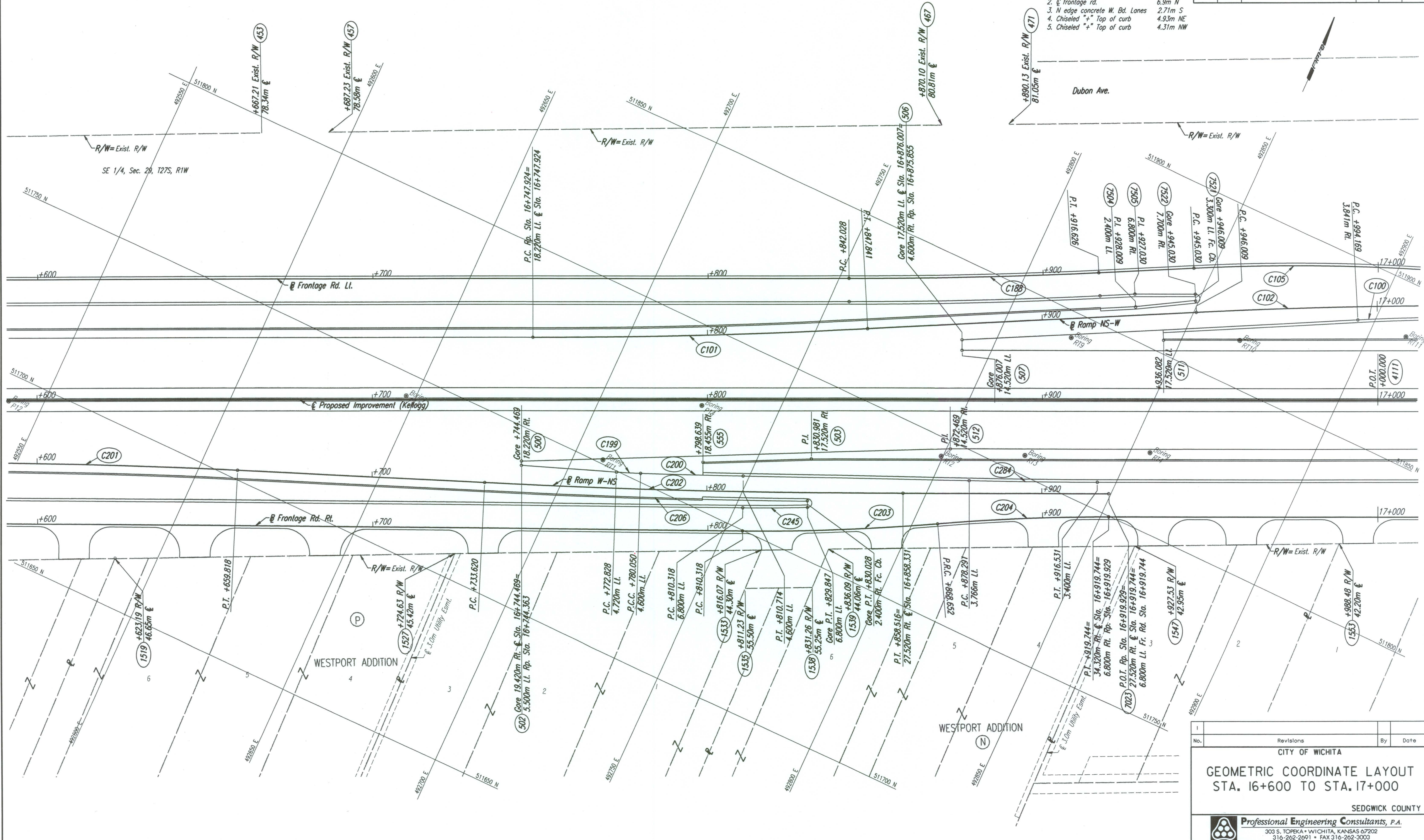


DATE	
BY	
REFERENCES NOTED	
REFERENCES CHECKED	

DSNR: JPS OPER: JGP SCALE: 1:500
 I:/1997/97362/GEOMCOORD/G166.DGN 11-19-1999 13:18:48 LAST REV: 12-21-01 BY: JGP

- P.O.T. @ Sta. 17+000.000 (4111)
- Set #4 bar w/cap in median between W. Bd. & Frontage Rd.
 - @ frontage rd. 6.9m N
 - N edge concrete W. Bd. Lanes 2.71m S
 - Chiseled "+" Top of curb 4.93m NE
 - Chiseled "+" Top of curb 4.31m NW

FHWA REGION NO.	STATE	PROJECT NO.	YEAR	SHEET NO.	TOTAL SHEETS
7	KANSAS	54-87 K-6657-01	2002	45	1122



No.	Revisions	By	Date

CITY OF WICHITA

GEOMETRIC COORDINATE LAYOUT STA. 16+600 TO STA. 17+000

SEDGWICK COUNTY

Professional Engineering Consultants, P.A.
 303 S. TOPEKA • WICHITA, KANSAS 67202
 316-262-2691 • FAX 316-262-3003

Designed by	WDH	Checked by	WDH
Drawn by	JGP	Date	April, 2002
		Job No.	97362