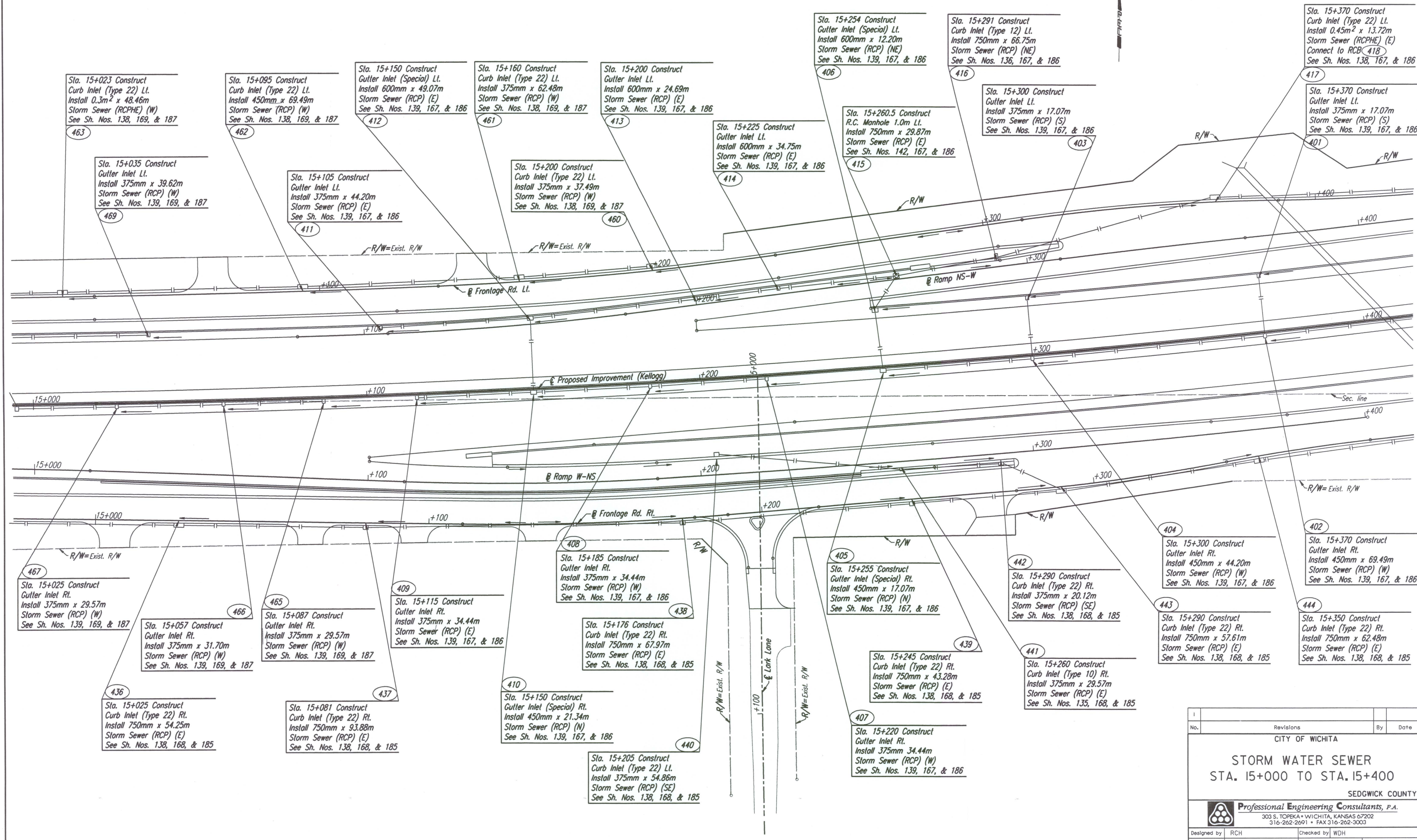


DATE	
BY	
REFERENCES NOTED	
REFERENCES CHECKED	

DSNR: JPS OPER: JGP SCALE: 1:500
 1/1997/97362/SWS/SWS150.DGN 11-19-1999 15:54:42 LAST REV: 2-5-2002 BY: svb



Sta. 15+023 Construct
Curb Inlet (Type 22) Lt.
Install 0.3m² x 48.46m
Storm Sewer (RCPHE) (W)
See Sh. Nos. 138, 169, & 187

Sta. 15+035 Construct
Gutter Inlet Lt.
Install 375mm x 39.62m
Storm Sewer (RCP) (W)
See Sh. Nos. 139, 169, & 187

Sta. 15+095 Construct
Curb Inlet (Type 22) Lt.
Install 450mm x 69.49m
Storm Sewer (RCP) (W)
See Sh. Nos. 138, 169, & 187

Sta. 15+105 Construct
Gutter Inlet Lt.
Install 375mm x 44.20m
Storm Sewer (RCP) (E)
See Sh. Nos. 139, 167, & 186

Sta. 15+150 Construct
Gutter Inlet (Special) Lt.
Install 600mm x 49.07m
Storm Sewer (RCP) (E)
See Sh. Nos. 139, 167, & 186

Sta. 15+160 Construct
Curb Inlet (Type 22) Lt.
Install 375mm x 62.48m
Storm Sewer (RCP) (W)
See Sh. Nos. 138, 169, & 187

Sta. 15+200 Construct
Gutter Inlet Lt.
Install 600mm x 24.69m
Storm Sewer (RCP) (E)
See Sh. Nos. 139, 167, & 186

Sta. 15+200 Construct
Curb Inlet (Type 22) Lt.
Install 375mm x 37.49m
Storm Sewer (RCP) (W)
See Sh. Nos. 138, 169, & 187

Sta. 15+225 Construct
Gutter Inlet Lt.
Install 600mm x 34.75m
Storm Sewer (RCP) (E)
See Sh. Nos. 139, 167, & 186

Sta. 15+254 Construct
Gutter Inlet (Special) Lt.
Install 600mm x 12.20m
Storm Sewer (RCP) (NE)
See Sh. Nos. 139, 167, & 186

Sta. 15+260.5 Construct
R.C. Manhole 1.0m Lt.
Install 750mm x 29.87m
Storm Sewer (RCP) (E)
See Sh. Nos. 142, 167, & 186

Sta. 15+291 Construct
Curb Inlet (Type 12) Lt.
Install 750mm x 66.75m
Storm Sewer (RCP) (NE)
See Sh. Nos. 136, 167, & 186

Sta. 15+300 Construct
Gutter Inlet Lt.
Install 375mm x 17.07m
Storm Sewer (RCP) (S)
See Sh. Nos. 139, 167, & 186

Sta. 15+370 Construct
Curb Inlet (Type 22) Lt.
Install 0.45m² x 13.72m
Storm Sewer (RCPHE) (E)
Connect to RCB 418
See Sh. Nos. 138, 167, & 186

Sta. 15+370 Construct
Gutter Inlet Lt.
Install 375mm x 17.07m
Storm Sewer (RCP) (S)
See Sh. Nos. 139, 167, & 186

Sta. 15+025 Construct
Gutter Inlet Rt.
Install 375mm x 29.57m
Storm Sewer (RCP) (W)
See Sh. Nos. 139, 169, & 187

Sta. 15+057 Construct
Gutter Inlet Rt.
Install 375mm x 31.70m
Storm Sewer (RCP) (W)
See Sh. Nos. 139, 169, & 187

Sta. 15+087 Construct
Gutter Inlet Rt.
Install 375mm x 29.57m
Storm Sewer (RCP) (W)
See Sh. Nos. 139, 169, & 187

Sta. 15+115 Construct
Gutter Inlet Rt.
Install 375mm x 34.44m
Storm Sewer (RCP) (E)
See Sh. Nos. 139, 167, & 186

Sta. 15+185 Construct
Gutter Inlet Rt.
Install 375mm x 34.44m
Storm Sewer (RCP) (W)
See Sh. Nos. 139, 167, & 186

Sta. 15+176 Construct
Curb Inlet (Type 22) Rt.
Install 750mm x 67.97m
Storm Sewer (RCP) (E)
See Sh. Nos. 138, 168, & 185

Sta. 15+150 Construct
Gutter Inlet (Special) Rt.
Install 450mm x 21.34m
Storm Sewer (RCP) (N)
See Sh. Nos. 139, 167, & 186

Sta. 15+205 Construct
Curb Inlet (Type 22) Lt.
Install 375mm x 54.86m
Storm Sewer (RCP) (SE)
See Sh. Nos. 138, 168, & 185

Sta. 15+255 Construct
Gutter Inlet (Special) Rt.
Install 450mm x 17.07m
Storm Sewer (RCP) (N)
See Sh. Nos. 139, 167, & 186

Sta. 15+245 Construct
Curb Inlet (Type 22) Rt.
Install 750mm x 43.28m
Storm Sewer (RCP) (E)
See Sh. Nos. 138, 168, & 185

Sta. 15+220 Construct
Gutter Inlet Rt.
Install 375mm 34.44m
Storm Sewer (RCP) (W)
See Sh. Nos. 139, 167, & 186

Sta. 15+290 Construct
Curb Inlet (Type 22) Rt.
Install 375mm x 20.12m
Storm Sewer (RCP) (SE)
See Sh. Nos. 138, 168, & 185

Sta. 15+260 Construct
Curb Inlet (Type 10) Rt.
Install 375mm x 29.57m
Storm Sewer (RCP) (E)
See Sh. Nos. 135, 168, & 185

Sta. 15+300 Construct
Gutter Inlet Rt.
Install 450mm x 44.20m
Storm Sewer (RCP) (W)
See Sh. Nos. 139, 167, & 186

Sta. 15+290 Construct
Curb Inlet (Type 22) Rt.
Install 750mm x 57.61m
Storm Sewer (RCP) (E)
See Sh. Nos. 138, 168, & 185

Sta. 15+370 Construct
Gutter Inlet Rt.
Install 450mm x 69.49m
Storm Sewer (RCP) (W)
See Sh. Nos. 139, 167, & 186

Sta. 15+350 Construct
Curb Inlet (Type 22) Rt.
Install 750mm x 62.48m
Storm Sewer (RCP) (E)
See Sh. Nos. 138, 168, & 185

No.	Revisions	By	Date

CITY OF WICHITA

**STORM WATER SEWER
STA. 15+000 TO STA. 15+400**

SEDGWICK COUNTY

Professional Engineering Consultants, P.A.
 303 S. TOPEKA • WICHITA, KANSAS 67202
 316-262-2691 • FAX 316-262-3003

Designed by	RCH	Checked by	WDH
Drawn by	JGP	Date	Apr 11, 2002
		Job No.	97362