

### INLET AND MANHOLE DATA

### FOR INFORMATION ONLY

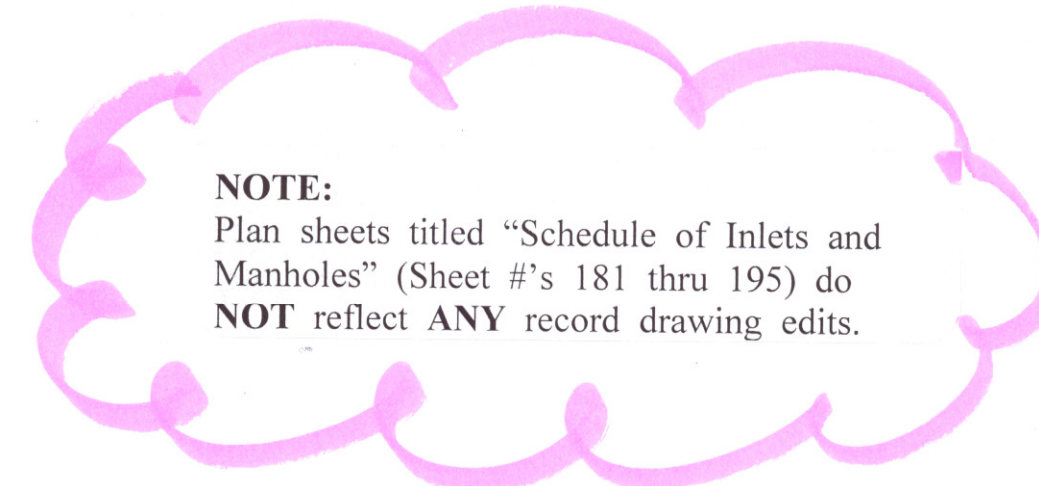
ROUTING SEQUENCE FROM	ROUTING SEQUENCE TO	LOCATIONS OF INSTALLATIONS				CONSTRUCT OR INSTALL					DIMENSIONS				ELEVATIONS		INFLOW CONDUITS					OUTFLOW CONDUITS		CLASS III EXC. (cu. m.)	CAST IRON (kg.)	STRUCT. STEEL (kg.)	REINF. STEEL (kg.)	CLASS A CONC. (cu. m.)	STEPS	REMARKS		
		STATION	ROUTE IDENTIFICATION	DISTANCE LEFT/RIGHT	NORTH COORDINATE	EAST COORDINATE	INLET TYPE	INLET TYPE	M.H. (STD.)	INLET (M.H.-SPEC.)	END SECTION *	G&F TYPE	L&F TYPE	L (m)	W (m)	H (m)	H <sub>1</sub> (m)	TOP	FLOOR	SIZE DIRECT.	FLOWLINE ELEV.	SIZE DIRECT.	FLOWLINE ELEV.								SIZE DIRECT.	FLOWLINE ELEV.
100	101	5+580	Tyler Rd.	12.000 m Lt.	511,424.306	493,238.512	1				E	D	1.500	1.500	1.070		404.700	403.780	375mm (S)	403.579					375mm (N)	403.837						
101	103	5+555	Tyler Rd.	8.650 m Lt.	511,449.199	493,234.446	1					D	3.000	1.200	1.370		404.695	403.475	375mm (S)	403.579					450mm (N)	403.539						
102	103	5+525	Tyler Rd.	8.650 m Rt.	511,478.691	493,216.292	1					D	3.000	1.200	1.370		404.480	403.260							375mm (E)	403.317						
103	104	5+525	Tyler Rd.	8.650 m Lt.	511,479.187	493,233.585	1					D	3.000	1.200	1.520		404.480	403.110	450mm (S)	403.320	375mm (W)	403.224			600mm (N)	403.186						
104	107	5+495	Tyler Rd.	8.650 m Lt.	511,509.175	493,232.724	1					D	3.000	1.650	1.680		404.275	402.745	600mm (S)	402.939					900mm (N)	402.906						
105	106	5+495	Tyler Rd.	8.650 m Rt.	511,508.678	493,215.431	1					D	3.000	1.050	1.220		404.275	403.205							375mm (N)	403.262						
106	107	5+482	Tyler Rd.	8.650 m Rt.	511,521.673	493,215.058	1					D	3.000	1.050	1.370		404.238	403.018	375mm (S)	403.117					450mm (E)	403.082						
107	108	5+482	Tyler Rd.	8.650 m Lt.	511,522.169	493,232.351	1					D	3.000	1.650	1.680		404.238	402.708	900mm (S)	402.885	450mm (W)	402.896			900mm (N)	402.855						
108	109	5+467	Tyler Rd.	8.650 m Lt.	511,537.163	493,231.921	1					D	3.000	1.650	1.830		404.272	402.592	900mm (S)	402.830					900mm (N)	402.800						
109	111	5+386	Tyler Rd.	9.600 m Lt.	511,618.157	493,230.546	1					D	3.000	1.650	1.980		404.244	402.414	900mm (S)	402.643					900mm (N)	402.613						
110	111	5+362	Tyler Rd.	17.600 m Lt.	511,642.377	493,237.854				*															375mm (W)	404.190						
111	112	5+362.5	Tyler Rd.	10.187 m Lt.	511,641.664	493,230.459	1					D	3.000	1.650	1.980		404.186	402.356	900mm (S)	402.571	375mm (E)	403.092			900mm (N)	402.541						
112	113	5+335	Tyler Rd.	10.500 m Lt.	511,669.162	493,229.982	1					D	3.000	1.650	2.290		404.480	402.340	900mm (S)	402.491					900mm (N)	402.461						
113	---	5+309.986	Tyler Rd.	11.800 m Lt.	511,694.203	493,230.563																										Inside face of wall RCB
120	121	5+385	Tyler Rd.	7.675 m Rt.	511,618.661	493,213.249	1					D	3.000	1.200	1.070		404.240	403.320							375mm (N)	403.377						
121	122	5+368	Tyler Rd.	7.250 m Rt.	511,635.666	493,213.186	1					D	3.000	1.200	1.220		404.186	403.116	375mm (S)	403.205					375mm (N)	403.173						
122	123	5+335	Tyler Rd.	6.800 m Rt.	511,668.665	493,212.689	1					D	3.000	1.200	1.980		404.480	402.650	375mm (S)	402.746					375mm (N)	402.709						
123	---	5+314.064	Tyler Rd.	11.329 m Rt.	511,689.463	493,207.561																									Inside face of wall RCB	
130	131	5+118	Tyler Rd.	17.551 m Lt.	511,886.275	493,230.803	1					D	3.000	1.200	1.070		404.610	403.690							375mm (W)	403.747						
131	---	5+117.721	Tyler Rd.	9.896 m Lt.	511,886.334	493,223.143																									Connect to Exist. 375mm RCP	
133	134	5+235	Tyler Rd.	10.635 m Lt.	511,769.125	493,227.247	1					D	3.000	1.200	1.070		404.566	403.646							375mm (N)	403.703						
134	135	5+203	Tyler Rd.	11.835 m Lt.	511,801.146	493,227.828	1					D	4.500	1.200	1.370		404.412	403.192	375mm (S)	403.348					2-0.3m <sup>2</sup> (W)	403.294						
135	---	5+203	Tyler Rd.	8.540 m Lt.	511,801.051	493,224.234																									Connect to Exist. 2-0.3m <sup>2</sup> RCP	
140	142	4+897	Tyler Rd.	17.700 m Lt.	512,107.188	493,224.609	1					D	3.000	1.200	1.220		404.717	403.647							375mm (NW)	403.704						
141	142	4+860	Tyler Rd.	17.033 m Lt.	512,144.154	493,222.881	1					D	3.000	1.200	1.220		404.572	403.502							375mm (SW)	403.559						
142	---	4+874.8	Tyler Rd.	10.700 m Lt.	512,129.178	493,216.975							1.500	1.500	2.290	0.610	404.654	401.904	375mm (SE)	402.673	375mm (NE)	402.808	375mm (SE)	402.598 (D)	450mm (W)	402.110 (D)					Connect to Exist. 450mm RCP & to Exist. 375mm PVC.	
Totals							19																									

\* End Sections are recapitulated with the Conduits below. Ⓢ Existing Flowline

### CONDUIT DATA

ROUTING SEQUENCE FROM	ROUTING SEQUENCE TO	LOCATIONS OF INSTALLATIONS			CONSTRUCT OR INSTALL		CONDUIT FLOWLINES			SEWER EXCAVATION		STORM SEWER (M)						END SECTIONS (EACH)			AASHTO CONC. CLASS	FLOWABLE FILL (m)	EDGE DRAINS (m)			REMARKS					
		STATION	ROUTE IDENTIFICATION	DISTANCE LEFT/RIGHT	TYPE OF CONDUIT	MATERIAL	LENGTH (m)	INFLOW ELEV.	OUTFLOW ELEV.	ROCK (cu. m.)	COMMON (cu. m.)	375 mm	450 mm	600 mm	750 mm	900 mm	0.3 m <sup>2</sup>	375 mm	600 mm	750 mm			100 mm	150 mm	200 mm						
100	101	5+580	Tyler Rd.	12.000 m Lt.	375mm	RCP	23.47	403.837	403.579			23.47									III										
101	103	5+555	Tyler Rd.	8.650 m Lt.	450mm	RCP	27.43	403.539	403.320			27.43									III										
102	103	5+525	Tyler Rd.	8.650 m Rt.	375mm	RCP	18.59	403.317	403.224			18.59									III	18.29									
103	104	5+525	Tyler Rd.	8.650 m Lt.	600mm	RCP	27.43	403.186	402.939												III										
104	107	5+495	Tyler Rd.	8.650 m Lt.	900mm	RCP	10.36	402.906	402.885												III										
105	106	5+495	Tyler Rd.	8.650 m Rt.	375mm	RCP	10.36	403.262	403.117			10.36									III										
106	107	5+482	Tyler Rd.	8.650 m Rt.	450mm	RCP	18.59	403.082	402.896												III	18.29									
107	108	5+482	Tyler Rd.	8.650 m Lt.	900mm	RCP	12.50	402.855	402.830												III										
108	109	5+467	Tyler Rd.	8.650 m Lt.	900mm	RCP	78.33	402.800	402.643												III										
109	111	5+386	Tyler Rd.	9.600 m Lt.	900mm	RCP	21.03	402.613	402.571												III										
110	111	5+362	Tyler Rd.	17.600 m Lt.	375mm	RCP	6.10	404.190	403.092			6.10									III										
111	112	5+362.5	Tyler Rd.	10.187 m Lt.	900mm	RCP	24.99	402.541	402.491												III										
112	113	5+335	Tyler Rd.	10.500 m Lt.	900mm	RCP	24.08	402.461	402.412												III										
120	121	5+385	Tyler Rd.	7.675 m Rt.	375mm	RCP	14.33	403.377	403.205			14.33									III										
121	122	5+368	Tyler Rd.	7.250 m Rt.	375mm	RCP	30.48	403.173	402.746			30.48									III										
122	123	5+335	Tyler Rd.	6.800 m Rt.	375mm	RCP	20.12	402.709	402.251			20.12									III										
130	131	5+118	Tyler Rd.	17.551 m Lt.	375mm	RCP	8.53	403.747	403.472			8.53									III	8.23									
133	134	5+235	Tyler Rd.	10.635 m Lt.	375mm	RCP	29.57	403.703	403.348			29.57									III										
134	135	5+203	Tyler Rd.	11.835 m Lt.	2-0.3m <sup>2</sup>	RCPHE	3.96	403.294	403.227												III	7.62									
140	142	4+897	Tyler Rd.	17.700 m Lt.	375mm	RCP	22.25	403.704	402.673			22.25									III	21.65									
141	142	4+860	Tyler Rd.	17.033 m Lt.	375mm	RCP	16.15	403.559	402.808			16.15									III	15.85									
Totals												199.95	46.02	27.43		171.29	7.92			1				89.93							36

DSNR: RCH OPER: JGP SCALE: 1:1  
 i:/1997/97362/SWS/SCHEDULES.DGN(1) 2-28-2001 10:57:35 LAST REV: 1-11-2002 BY: svb



NOTE:  
 Plan sheets titled "Schedule of Inlets and Manholes" (Sheet #'s 181 thru 195) do NOT reflect ANY record drawing edits.

CITY OF WICHITA