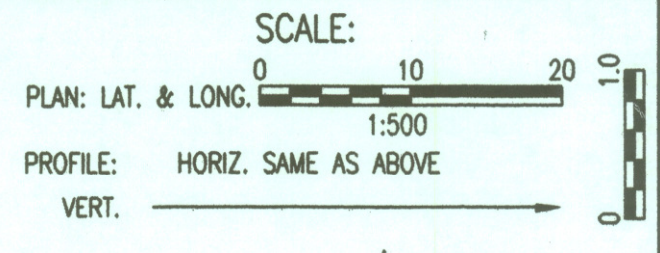


FHWA REGION NO.	STATE	PROJECT NO.	YEAR	SHEET NO.	TOTAL SHEETS
7	KANSAS	54-87 K-6657-01	2002	211	1122



@ US-54, Sta. 15+664.625, 43.728 M Lt. =
 WL 1, Sta. 1+697.476 Back=
 WL 1, Sta. 1+687.843 Ahead
 Defl. = 1°09'54"

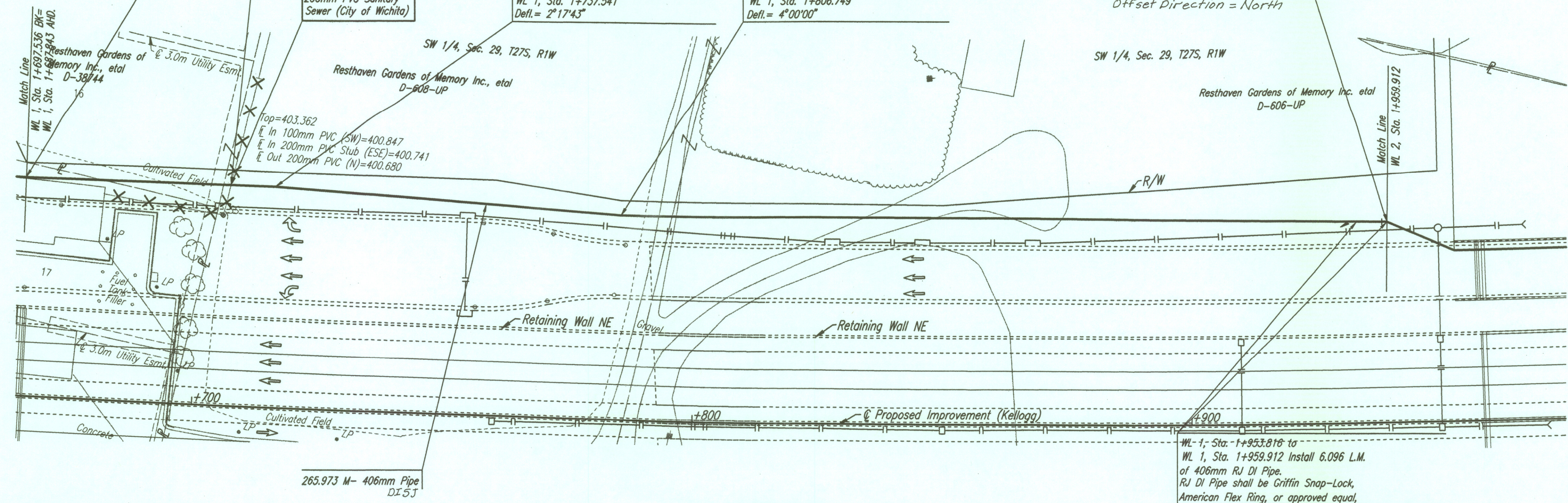
Existing Sanitary Sewer to be Removed
 Abandoned in Place
 See Sheet 32 (Road Plans)

CAUTION !!!
 200mm PVC Sanitary
 Sewer (City of Wichita)

@ US-54, Sta. 15+714.919, 44.300 M Lt. =
 WL 1, Sta. 1+737.541
 Defl. = 2°17'43"

@ US-54, Sta. 15+784.866, 41.200 M Lt. =
 WL 1, Sta. 1+806.749
 Defl. = 4°00'00"

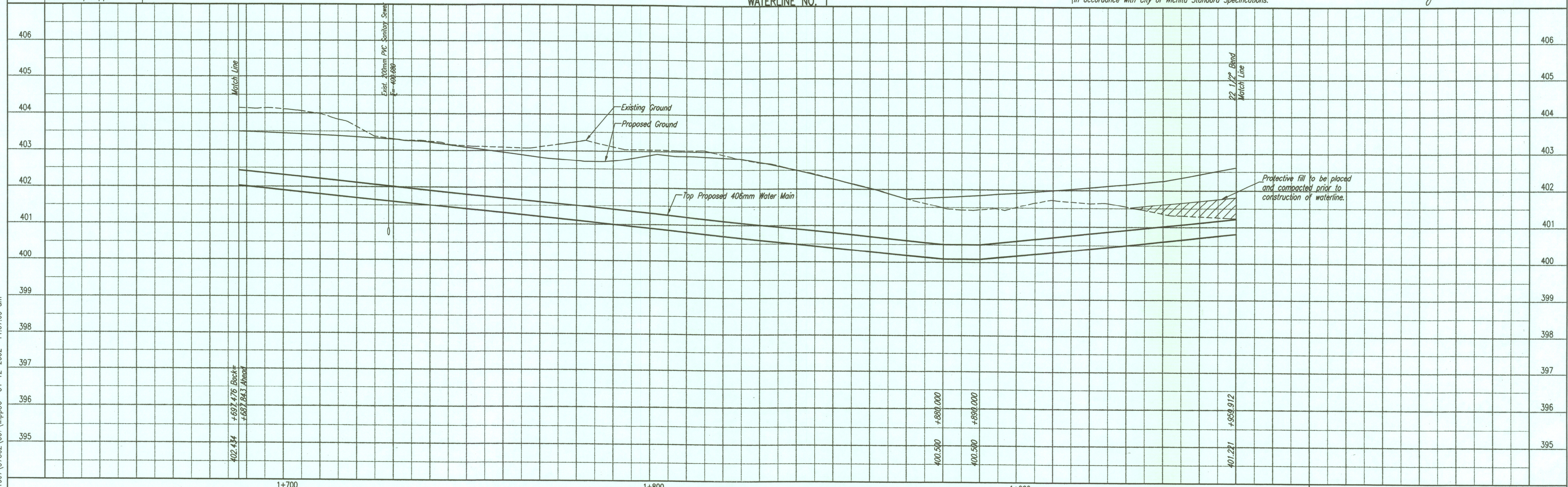
@ US-54, Sta. 15+939.746, 40.377 M Lt. =
 WL 1, Sta. 1+959.912
 1- 406mm CI CL RJ 22 1/2° Bend
 Defl. = 22°30'00"
 1- 406mm Valve Assembly (W)
 (MJ Butterfly Valve) (Pratt made for Mueller
 Top Valve Box El. = 402.232
 Offset Direction = North



WL-1; Sta. 1+953.818 to
 WL 1, Sta. 1+959.912 Install 6.096 L.M.
 of 406mm RJ DI Pipe.
 RJ DI Pipe shall be Griffin Snap-Lock,
 American Flex Ring, or approved equal,
 in accordance with City of Wichita Standard Specifications.

RECORD DRAWING
 Larry D. Powell 10-18-04

WATERLINE NO. 1



WATERLINE - PLAN/PROFILE