

FHWA REGION NO.	STATE	PROJECT NO.	YEAR	SHEET NO.	TOTAL SHEETS
7	KANSAS	54-87 K-6657-01	2002	237	1122

Record Drawings II

RECORD DRAWING SET

VOLUME I

- 1 Title Sheet
- 2 Index of Sheets
- 3-6 Typical Section - Mainline
- 7-11 Typical Section - Sideroads
- 12 Foundation Treatment and Compaction of Earthwork
- 13-14 Superlevation and Cross-slope Transition Diagrams
- 15 General Notes
- 16-63 Plan, Geometric Coordinate, and Profile Sheets (US-54)
- 64-69 Plan and Profile Sheets (Maize Road)
- 70-75 Plan and Profile Sheets (Tyler Road)
- 76-81 Ramp Profiles
- 82-92 Intersection Details
- 93-116 Paving Plans
- 117-126 Concrete Bridge Approach Pavement Details
- 127-134 Pavement Details
- 135-146 Inlet and Manhole Details
- 147 Edge Drain Details (Deleted)
- 148-150 Headwall Details
- 151-162 Storm Sewer Plans
- 163-180 Storm Sewer Profiles
- 181-195 Storm Sewer Schedules
- 196-227 Waterline Plans, Profiles, and Details
- 228-233 Concrete Safety Barrier Details
- 234-236 QuadGuard Details

VOLUME II

- 237 Index of Sheets
- 238 Cast in Place Retaining Walls General Notes
- 238A Planter Wall Details
- 239 Cast-in-place Retaining Walls Architectural Details
- 240-250 Retaining Wall and Planter Plans (Cast-In-Place)
- 251 Planter Wall Handrail Details
- 252-270 Retaining Wall and Planter Elevations (Cast-In-Place)
- 271-364 Retaining Wall and Planter Details (Cast-In-Place)
- 365-368 Retaining Wall #9 Details
- 369-374 Retaining Wall #10 Details
- 375-376 MSE Retaining Wall General Notes
- 377-386 MSE Retaining Wall Plans and Profiles
- 387 Metal End Section
- 388 Concrete End Sections
- 389-397 2-2.4x0.9 RCB Details (Sta 14+443.483)
- 398-399 1.8x0.9 RFB Details (Sta 15+407.000)
- 400-410 2.4x1.8 RFB Details (Sta 17+090.000)
- 411-417 3.4x2.4 RFB Details (Sta .17+121.754 to 17+420)
- 418 RCB Transition Details (3.4X2.4 to 3.0x2.1)
- 419-425 3.0x2.1RCB Details (Sta 17+423 to 17+776)
- 426-427 2.1x1.2 RCB Details (Maize Sta. 4+146)
- 428-429 2.1x1.2 RCB Details (Tyler Sta. 5+311)
- 430-433 RCB Standard Details

VOLUME III

- 434 Index of Sheets
- 435-476 Bridge No. 54-87-19.05 (489) W.B. & Bridge No. 54-87-19.06(491) E.B.
- 477-498 Bridge No. 54-87-19.32(495) F.W.B.
- 499-531 Bridge No. 54-87-19.30(493) E.B. & Bridge No. 54-87-19.31(494) W.B.
- 532-564 Bridge No. 54-87-19.29(492) F.E.B.
- 565-606 Bridge No. 54-87-20.13(496) W.B. & Bridge No. 54-87-20.12(497) E.B.
- 607-611 Bridge Standards
- 612-623 Summary of Quantities
- 624 Earthwork Balances
- 625 Recapitulation of Quantities
- 626-631 Temporary Project Water Pollution Control (Soil Erosion)
- 632-654 Lighting Plans and Details
- 655-668 Traffic Signals

SHEET INDEX FOR RECORD DRAWING EDITS

WEST KELLOGG FREEWAY MAIZE & TYLER ROAD INTERCHANGES PROJECT CITY OF WICHITA PROJECT NUMBER: 472-85533	
VOLUME	SHEET #
2	383
2	389
2	395
2	397
2	398
2	406
2	411
2	412
2	417
2	420
2	421
2	428
2	432
2	433
2	434
2	435
2	436
2	437
2	438
2	439
2	440
2	441
2	442
2	443
2	444
2	445
2	446
2	447
2	448
2	449
2	450
2	451
2	452
2	453
2	454
2	455
2	456
2	457
2	458
2	459
2	460
2	461
2	462
2	463
2	464
2	465
2	466
2	467
2	468
2	469
2	470
2	471
2	472
2	473
2	474
2	475
2	476
2	477
2	478
2	479
2	480

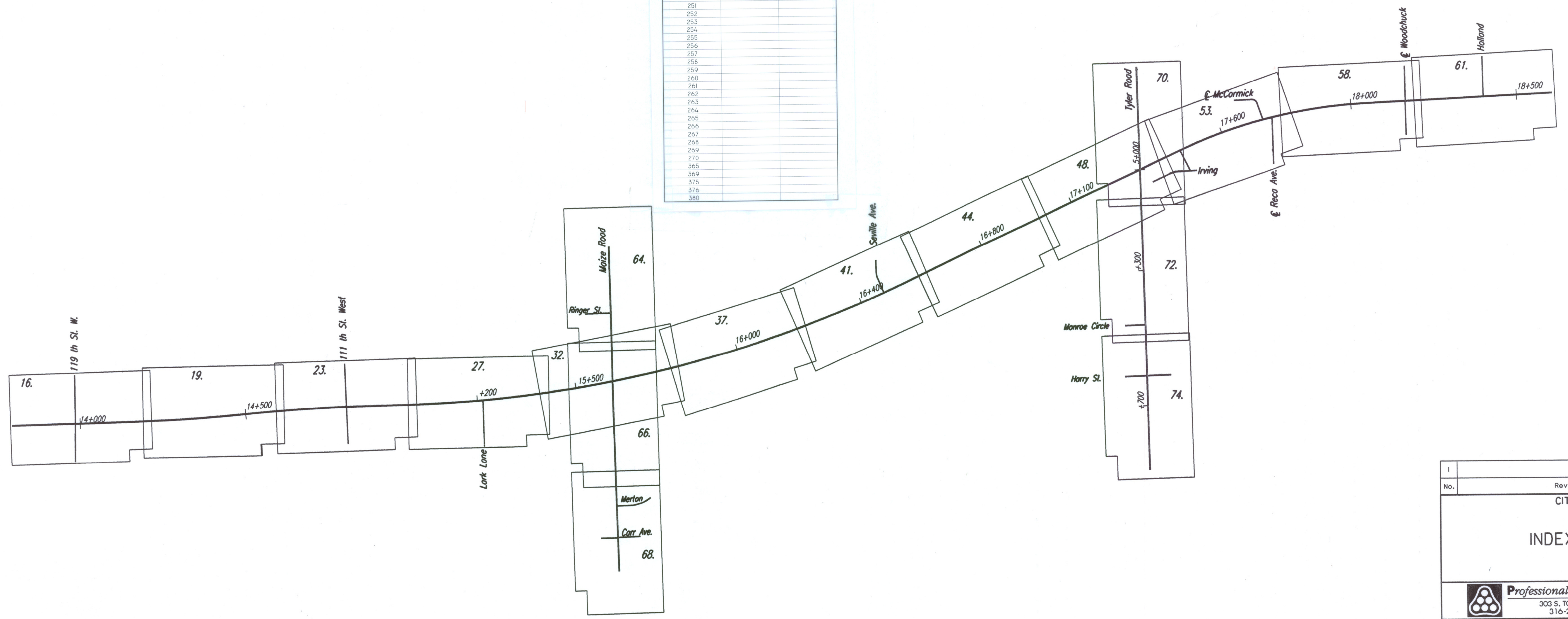
VOLUME IV

- 669 Index of Sheets
- 670-792 Signing and Pavement Marking
- 793-794 Construction Sequence
- 795-823 Traffic Control
- 823A Traffic Control
- 824-846 Traffic Control
- 847-894 Landscaping and Irrigation Plans and Details
- 894A Wetland Mitigation Plan
- 895-896 Drainage Maps

VOLUME V

- 897 Index of Sheets
- 898-1048 Cross Sections - Mainline and Frontage Roads
- 1049-1060 Cross Sections - Cowskin
- 1061-1081 Cross Sections - Maize Road
- 1082-1106 Cross Sections - Tyler Road
- 1107-1110 Cross Sections - Woodchuck
- 1111-1114 Cross Sections - Seville
- 1115 Cross Sections - Lark
- 1116 Cross Sections - Irving
- 1117-1118 Cross Sections - Holland
- 1119-1120 Cross Sections - Channel Change at Sta. 14+425
- 1121-1122 Cross Sections - Channel Change at Sta. 17+090

BY: [blank] DATE: 11-23-1999 7:46:30 LAST REV: [blank]



No.	Revisions	By	Date
CITY OF WICHITA			
INDEX OF SHEETS			
SEDGWICK COUNTY			
<b>Professional Engineering Consultants, P.A.</b> 303 S. TOPEKA • WICHITA, KANSAS 67202 316-262-2691 • FAX 316-262-3003			
Designed by	WDH	Checked by	
Drawn by	JGP	Date	Apr 11, 2002
		Job No.	97362