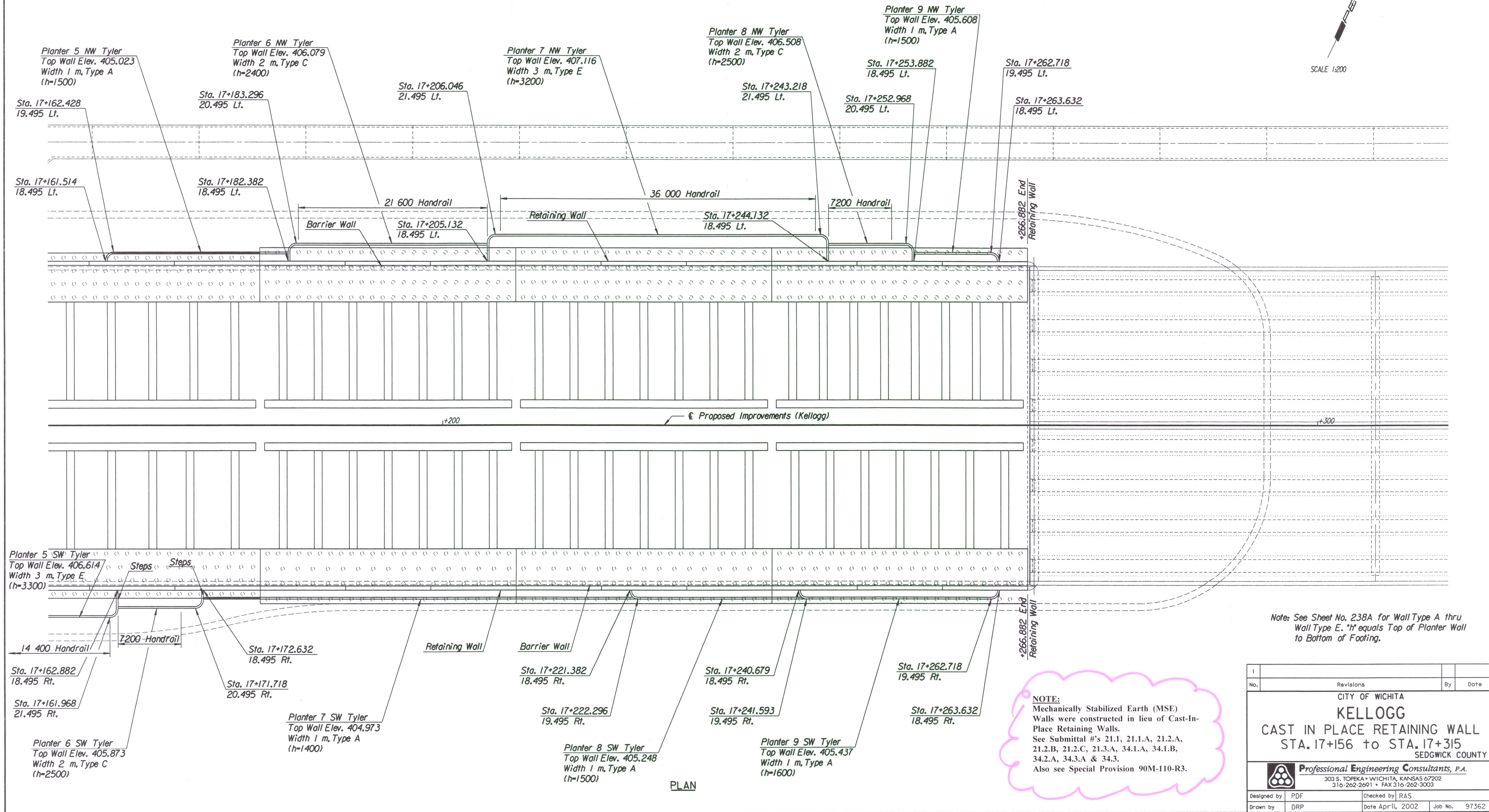




DATE	
BY	
REFERENCES NOTED	
REFERENCES CHECKED	



DSNR: PDF OPER: DRP SCALE: 1:200
 I:\1997\97362\001\RET WALL\PLANT WALL.DGN 3-19-2002 13:36:08 LAST REV: 4-11-2002 BY: drp

PLAN

NOTE:
 Mechanically Stabilized Earth (MSE)
 Walls were constructed in lieu of Cast-In-Place Retaining Walls.
 See Submittal #'s 21.1, 21.1.A, 21.2.A, 21.2.B, 21.2.C, 21.3.A, 34.1.A, 34.1.B, 34.2.A, 34.3.A & 34.3.
 Also see Special Provision 90M-110-R3.

Note: See Sheet No. 238A for Wall Type A thru Wall Type E. *h* equals Top of Planter Wall to Bottom of Footing.

No.	Revisions	By	Date

CITY OF WICHITA
KELLOGG
 CAST IN PLACE RETAINING WALL
 STA. 17+156 to STA. 17+315
 SEDGWICK COUNTY

Professional Engineering Consultants, P.A.
 303 S. TOPEKA • WICHITA, KANSAS 67202
 316-262-2691 • FAX 316-262-3003

Designed by	PDF	Checked by	RAS
Drawn by	DRP	Date	Apr 11, 2002
		Job No.	97362