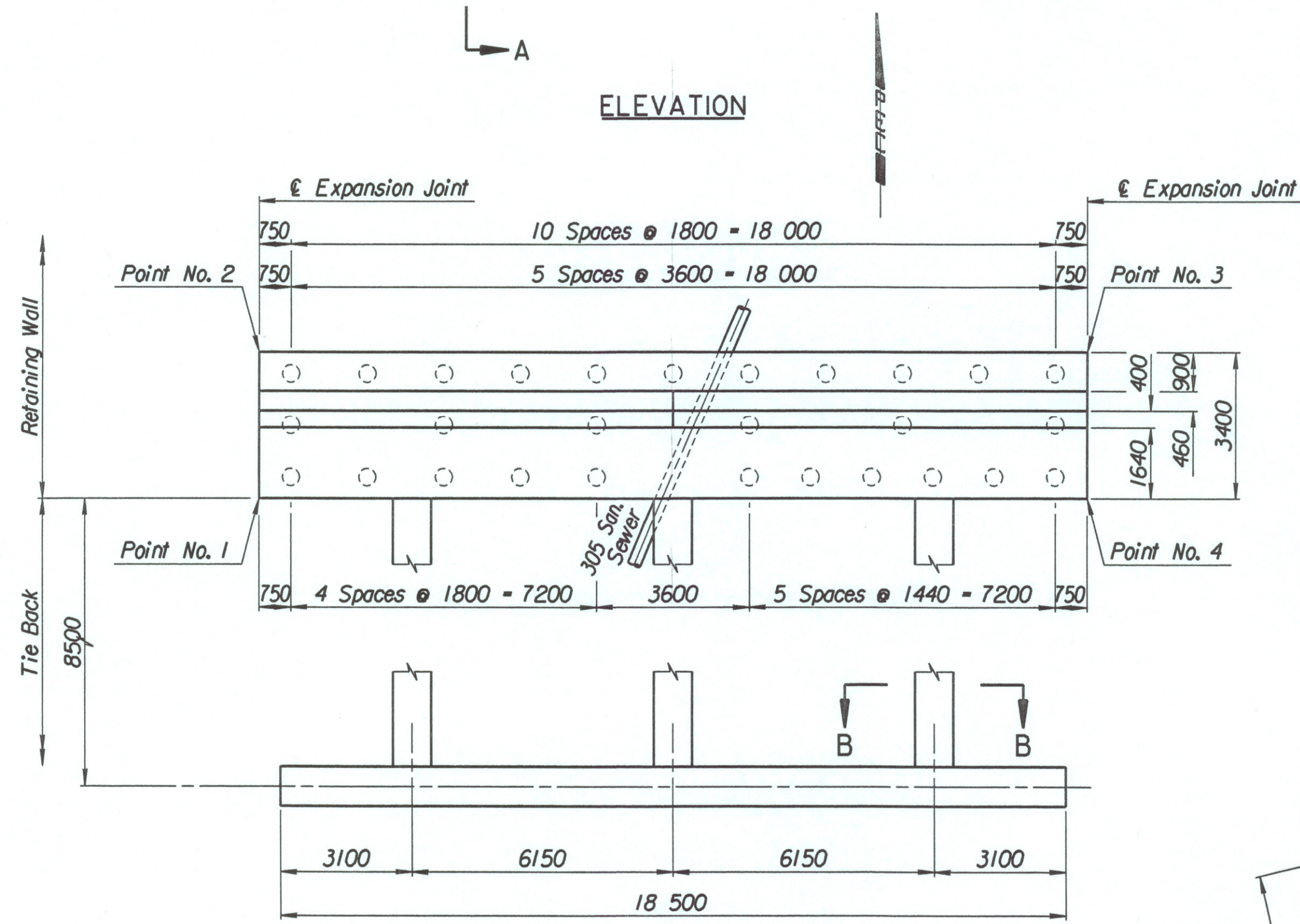
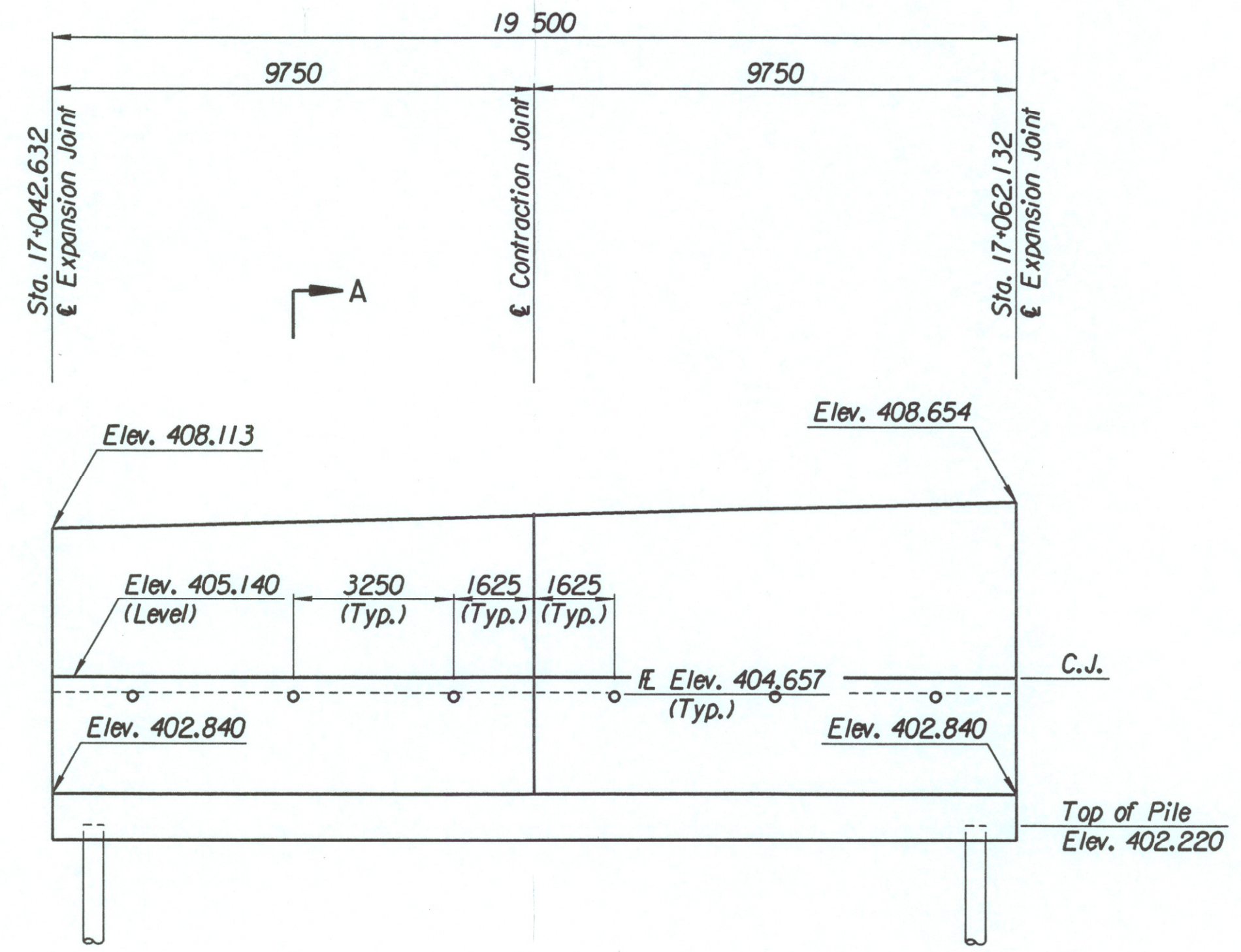


STATE	PROJECT NO.	YEAR	SHEET NO.	TOTAL SHEETS
KANSAS	54-87 K-6657-01	2002	323	1122

LAYOUT INFORMATION				
Point No.	North Coordinate	East Coordinate	Station	Offset
1	511897.176	492942.513	17+042.632	15.995 Lt.
2	511900.259	492941.081	17+042.632	19.395 Lt.
3	511908.474	492958.766	17+062.132	19.395 Lt.
4	511905.390	492960.199	17+062.132	15.995 Lt.

REINFORCING STEEL							
Straight Bars				Bent Bars			
Mark	Size	Number	Length	Mark	Size	Number	Length
H5-1	*25	164	3320	H5-3	*22	130	3110
H5-2	*25	44	10 670	H5-4	*22	66	2320
				H5-5	*19	130	1500
H5-6	*19	130	3760				
H5-7	*13	66	3450	H5-9	*16	66	1350
H5-8	*16	78	9650				
H5-10	*19	66	2820				
H5-11	*13	66	2920				
H5-12	*29	36	4000				

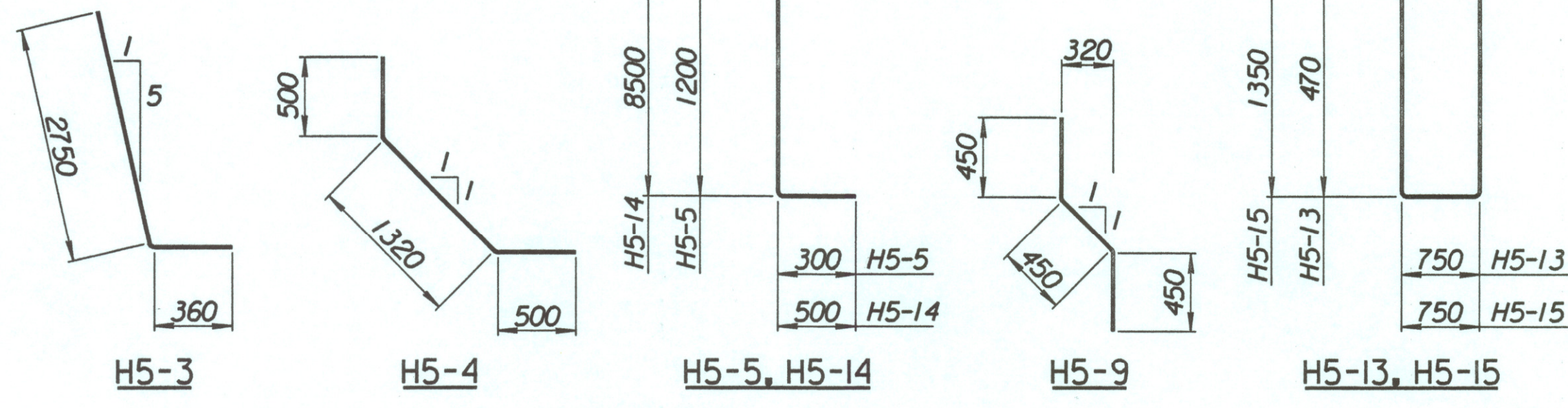
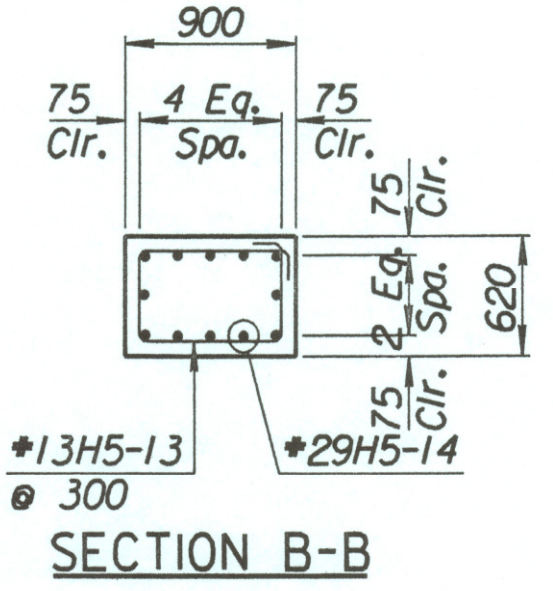
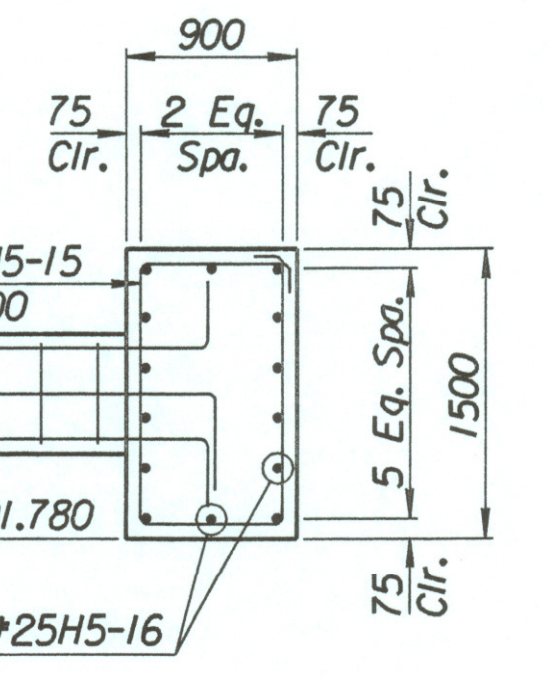
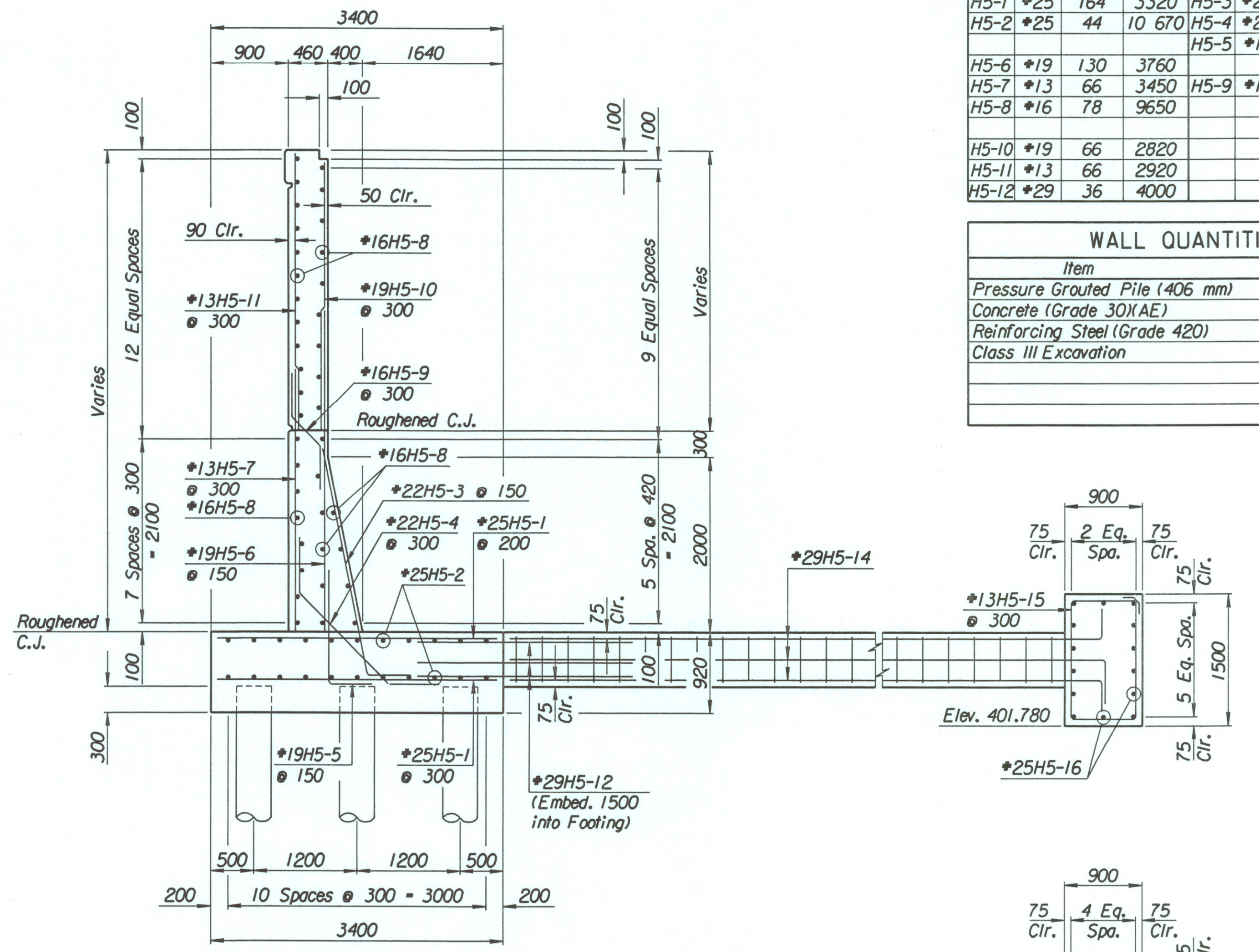
WALL QUANTITIES		
Item	Quantity	Unit
Pressure Grouted Pile (406 mm)	336.0	m
Concrete (Grade 30(AE))	118.3	m ³
Reinforcing Steel (Grade 420)	10 121	kg
Class III Excavation	106.9	m ³



Note:
Contractor shall verify location of 305 mm Sanitary Sewer prior to Pile Drilling Operation.

TIE BACK REINFORCING STEEL							
Straight Bars			Bent Bars				
Mark	Size	Number	Length	Mark	Size	Number	Length
H5-16	*25	28	10 170	H5-13	*13	84	2740
				H5-14	*29	36	9000
				H5-15	*13	63	4500

TIE BACK QUANTITIES		
Item	Quantity	Unit
Concrete (Grade 30(AE))	38.5	m ³
Reinforcing Steel (Grade 420)	3281	kg



BENDING DIAGRAMS
All dimensions are out to out of bars.

Drawn by: will
Plotted by: drp 3-25-2002
i:/1997/97362/001/bridge/tylerrd/NWwall-8

No.	Revisions	By	Date

CITY OF WICHITA

TYLER NORTHWEST WALL
STA. 17+042.632 TO STA. 17+062.132
SEDGWICK COUNTY

Professional Engineering Consultants, P.A.
303 S. TOPEKA • WICHITA, KANSAS 67202
316-262-2691 • FAX 316-262-3003

Designed by	P.D.F.	Checked by	R.A.S.
Drawn by	W.L.L.	Date	April, 2002
		Job No.	97362