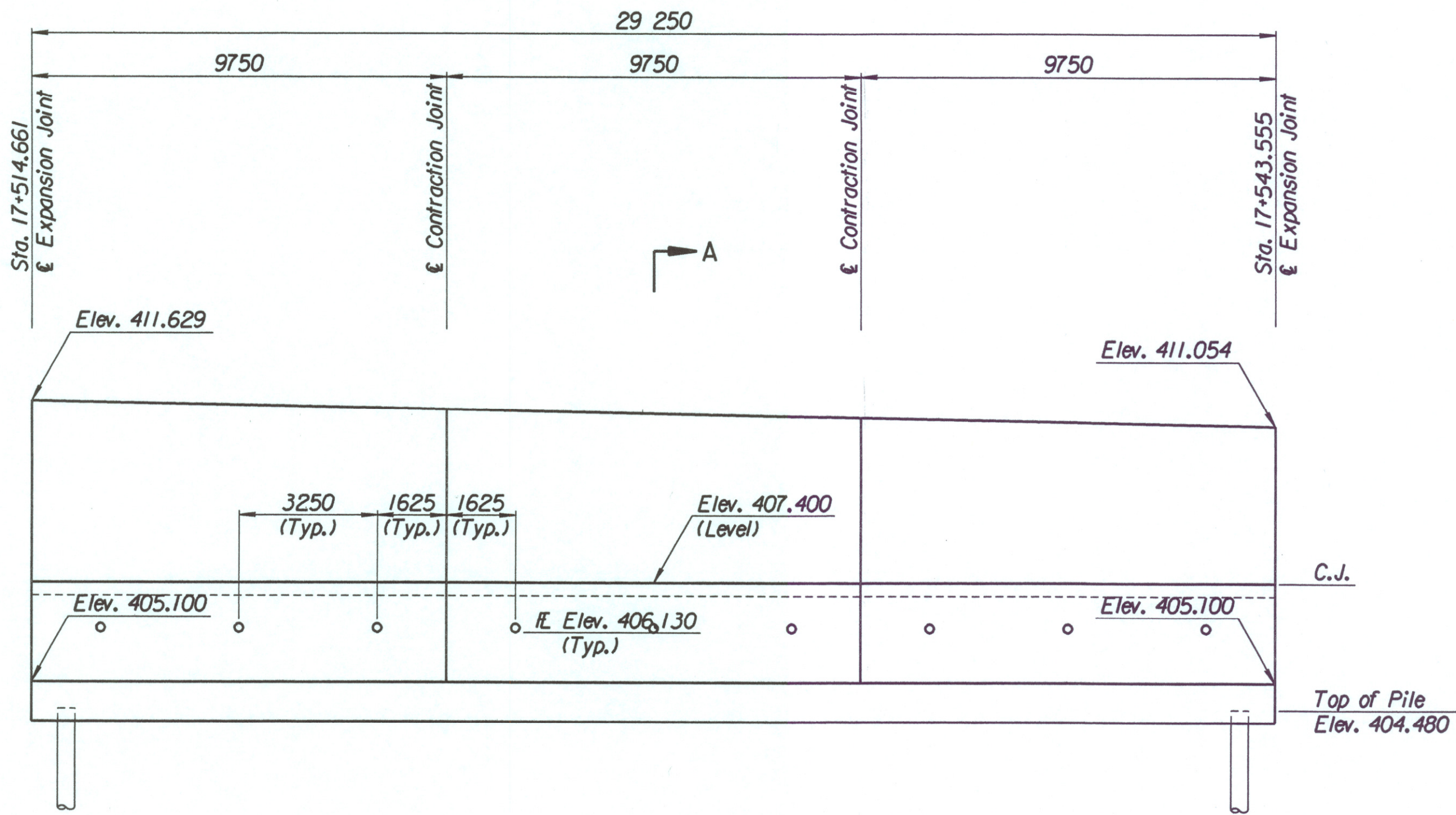


STATE	PROJECT NO.	YEAR	SHEET NO.	TOTAL SHEETS
KANSAS	54-87 K-6657-01	2002	332	1122

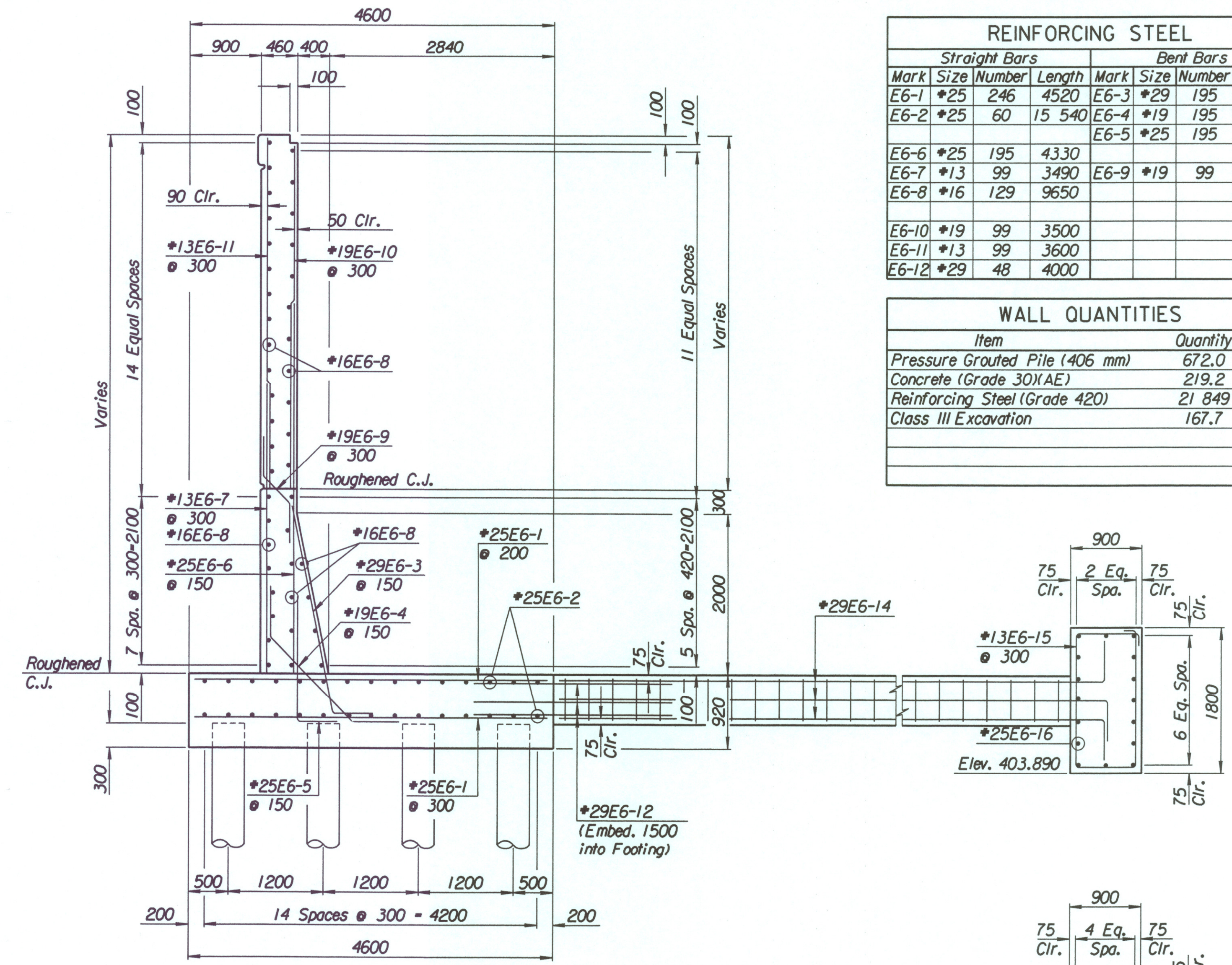
LAYOUT INFORMATION				
Point No.	North Coordinate	East Coordinate	Station	Offset
1	512094.250	493372.017	17+514.661	14.795 Lt.
2	512098.490	493370.231	17+514.661	19.395 Lt.
3	512109.588	493397.313	17+543.555	19.395 Lt.
4	512105.315	493399.016	17+543.555	14.795 Lt.

REINFORCING STEEL					
Straight Bars			Bent Bars		
Mark	Size	Length	Mark	Size	Length
E6-1	*25	246	E6-3	*29	195
E6-2	*25	60	E6-4	*19	195
E6-6	*25	195	E6-5	*25	195
E6-7	*13	99	E6-9	*19	99
E6-8	*16	129			
E6-10	*19	99			
E6-11	*13	99			
E6-12	*29	48			

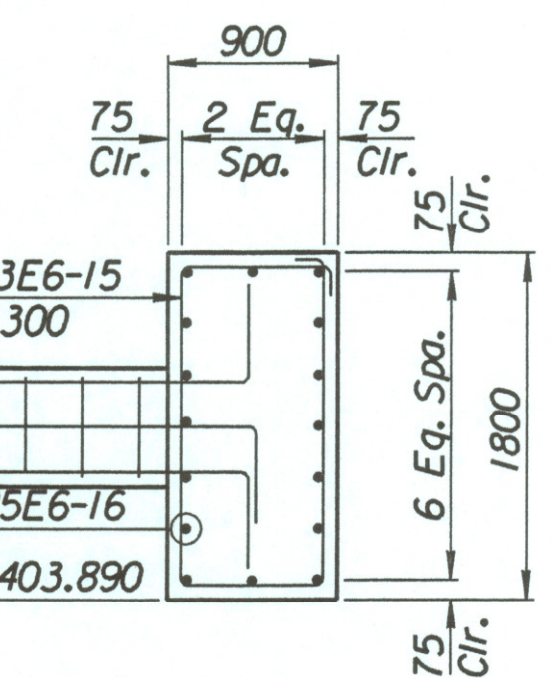
WALL QUANTITIES		
Item	Quantity	Unit
Pressure Grouted Pile (406 mm)	672.0	m
Concrete (Grade 30(AE))	219.2	m <sup>3</sup>
Reinforcing Steel (Grade 420)	21 849	kg
Class III Excavation	167.7	m <sup>3</sup>



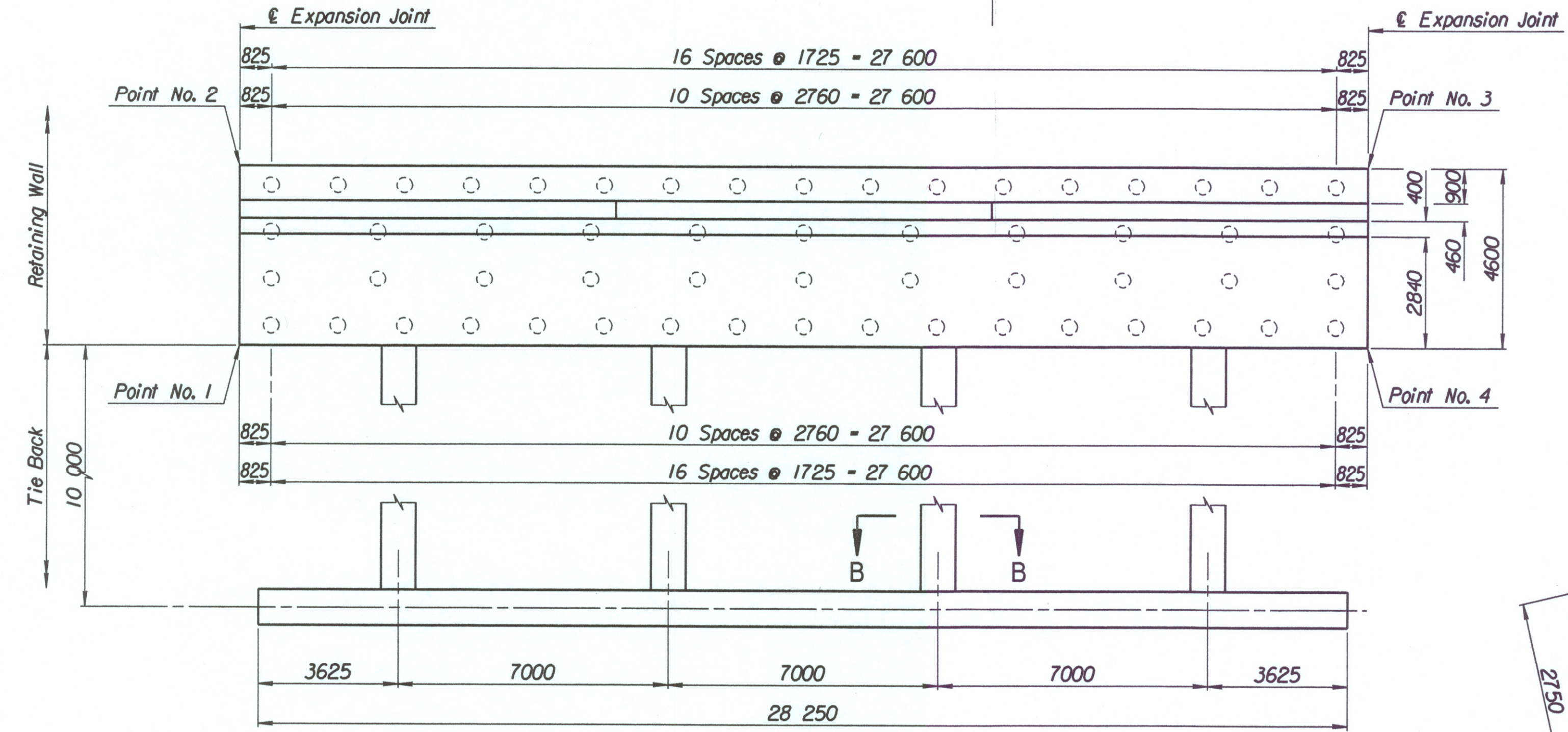
ELEVATION



SECTION A-A



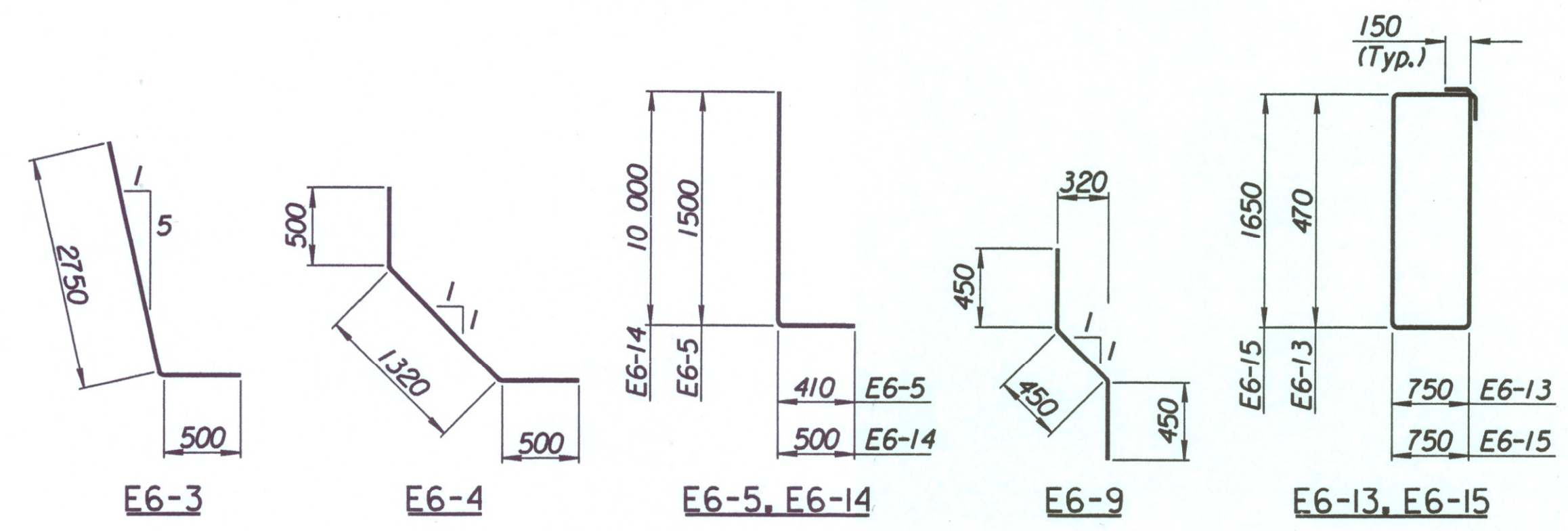
SECTION B-B



PLAN

TIE BACK REINFORCING STEEL					
Straight Bars			Bent Bars		
Mark	Size	Length	Mark	Size	Length
E6-16	*25	32	E6-13	*13	128
			E6-14	*29	48
			E6-15	*13	94

TIE BACK QUANTITIES		
Item	Quantity	Unit
Concrete (Grade 30(AE))	67.1	m <sup>3</sup>
Reinforcing Steel (Grade 420)	5288	kg



BENDING DIAGRAMS  
All dimensions are out to out of bars.

No.	Revisions	By	Date
CITY OF WICHITA			
<b>TYLER NORTHEAST WALL</b>			
STA. 17+514.661 TO STA. 17+543.555			
SEDGWICK COUNTY			
 <b>Professional Engineering Consultants, P.A.</b> <small>303 S. TOPEKA • WICHITA, KANSAS 67202          316-262-2691 • FAX 316-262-3003</small>			
Designed by	P.D.F.	Checked by	R.A.S.
Drawn by	W.L.L.	Date	April, 2002
		Job No.	97362

Drawn by: wll  
 Plotted by: drp 4-11-2002  
 i:/1997/97362/001/bridge/tyler.d/NEWall-5