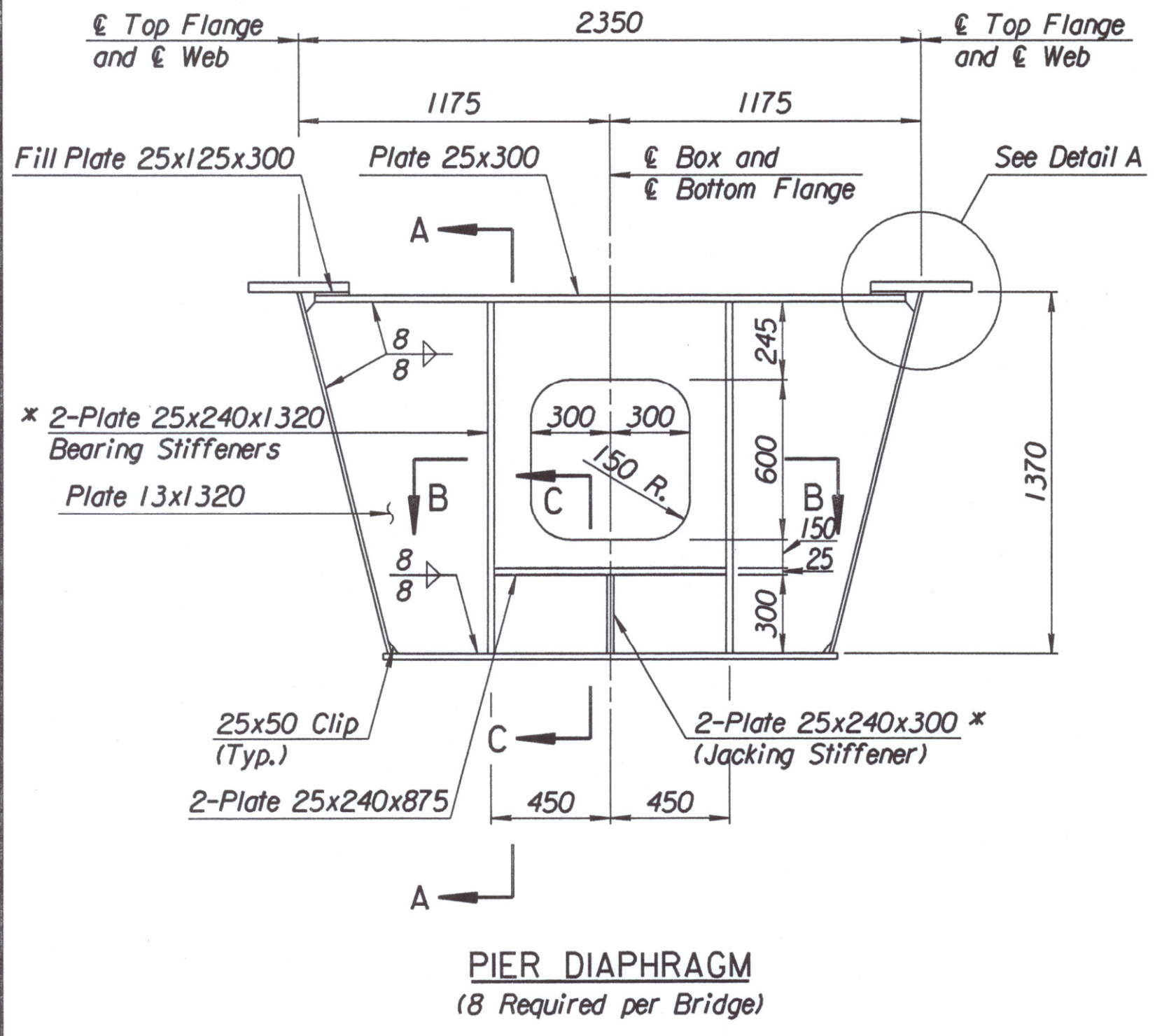
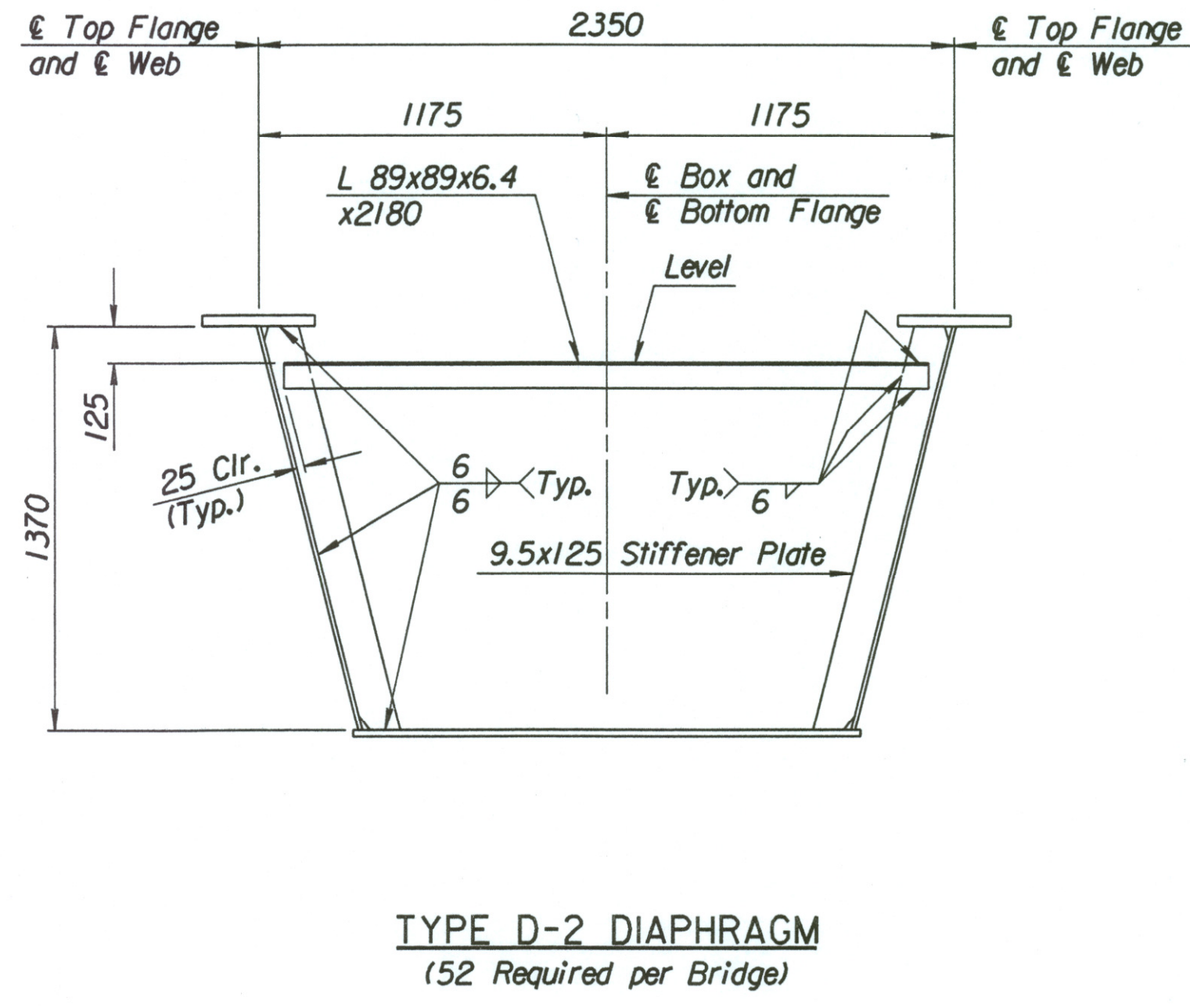


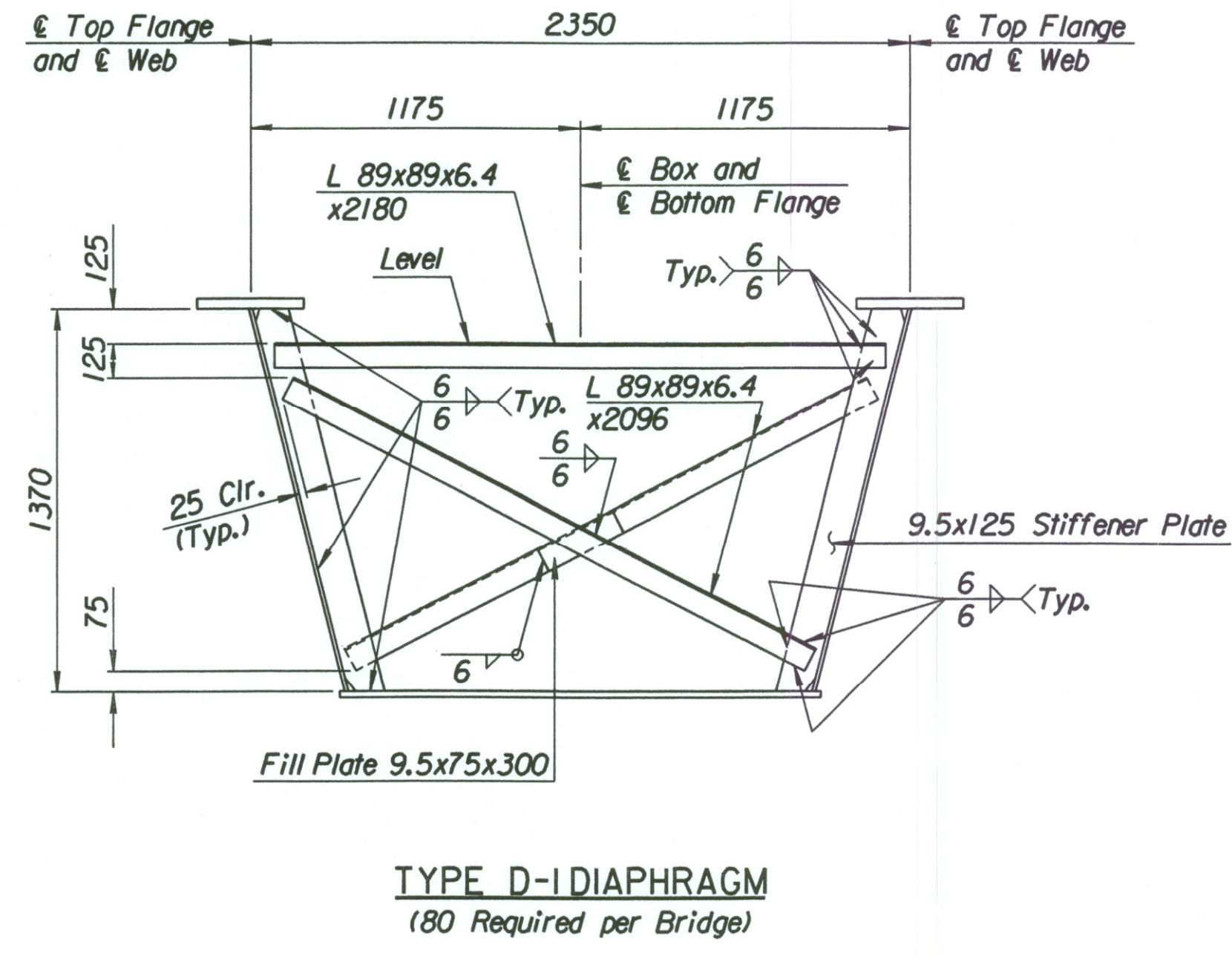
STATE	PROJECT NO.	YEAR	SHEET NO.	TOTAL SHEETS
KANSAS	54-87 K-6657-01	2002	460	1122



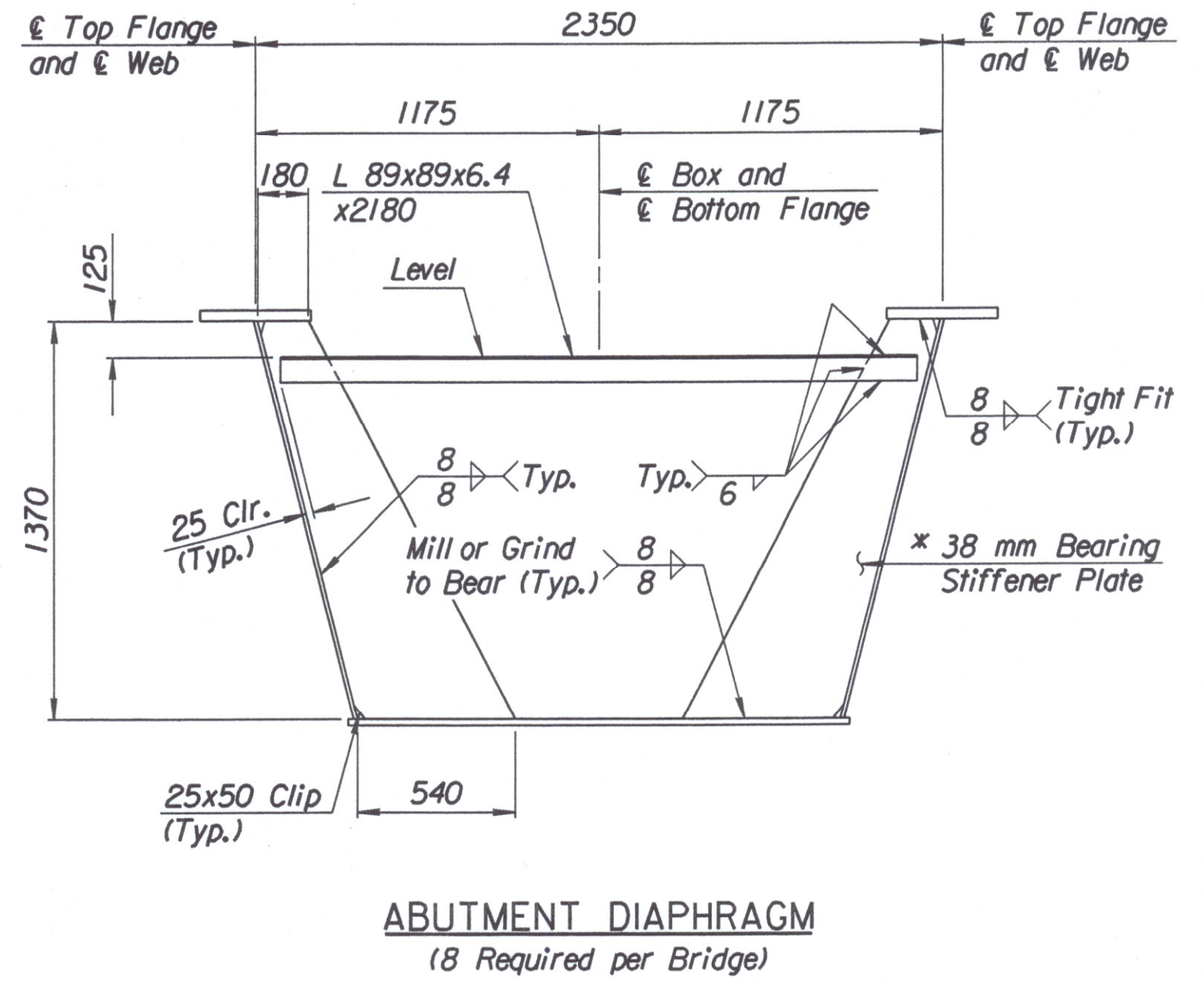
PIER DIAPHRAGM
(8 Required per Bridge)



TYPE D-2 DIAPHRAGM
(52 Required per Bridge)

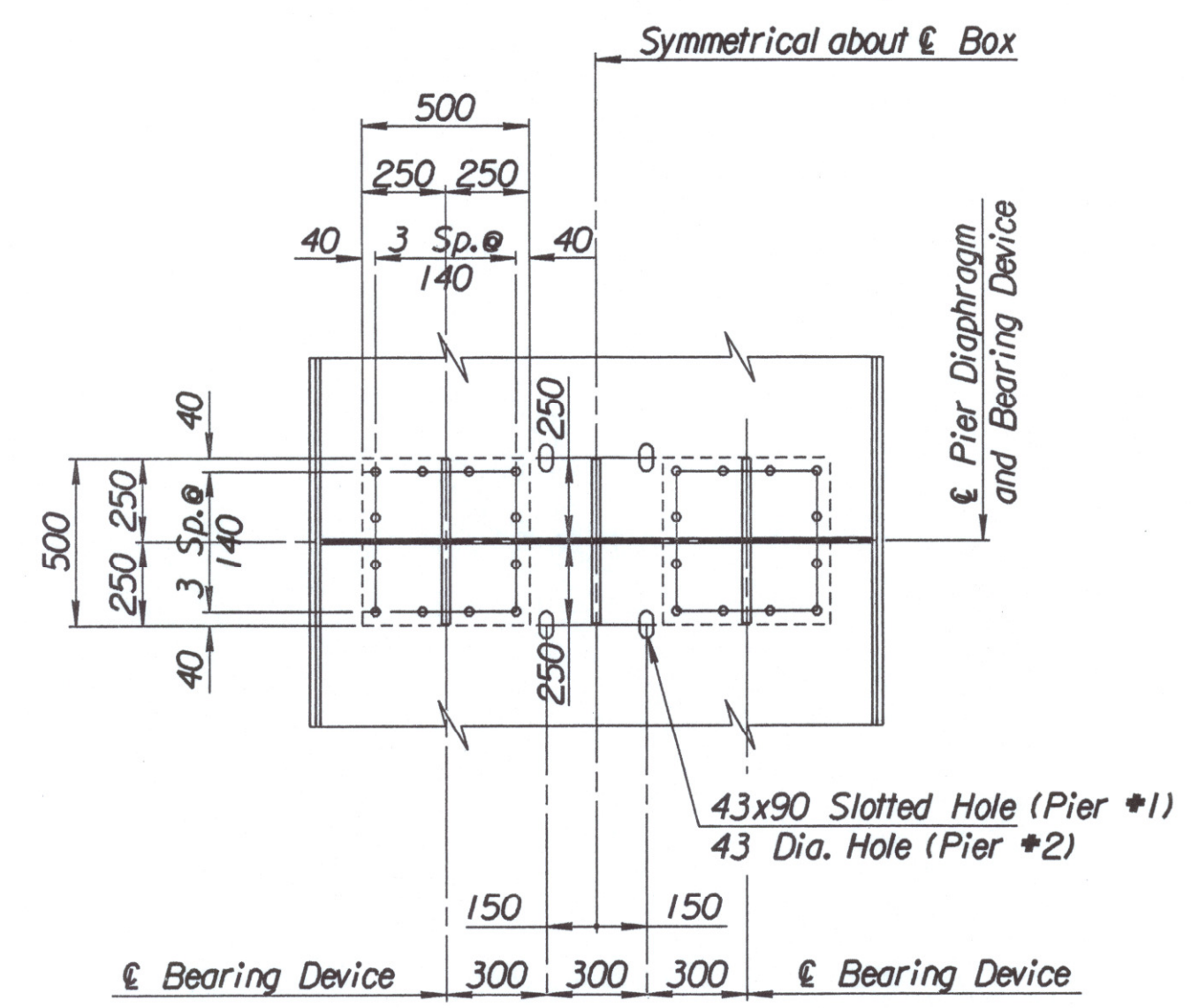


TYPE D-1 DIAPHRAGM
(80 Required per Bridge)

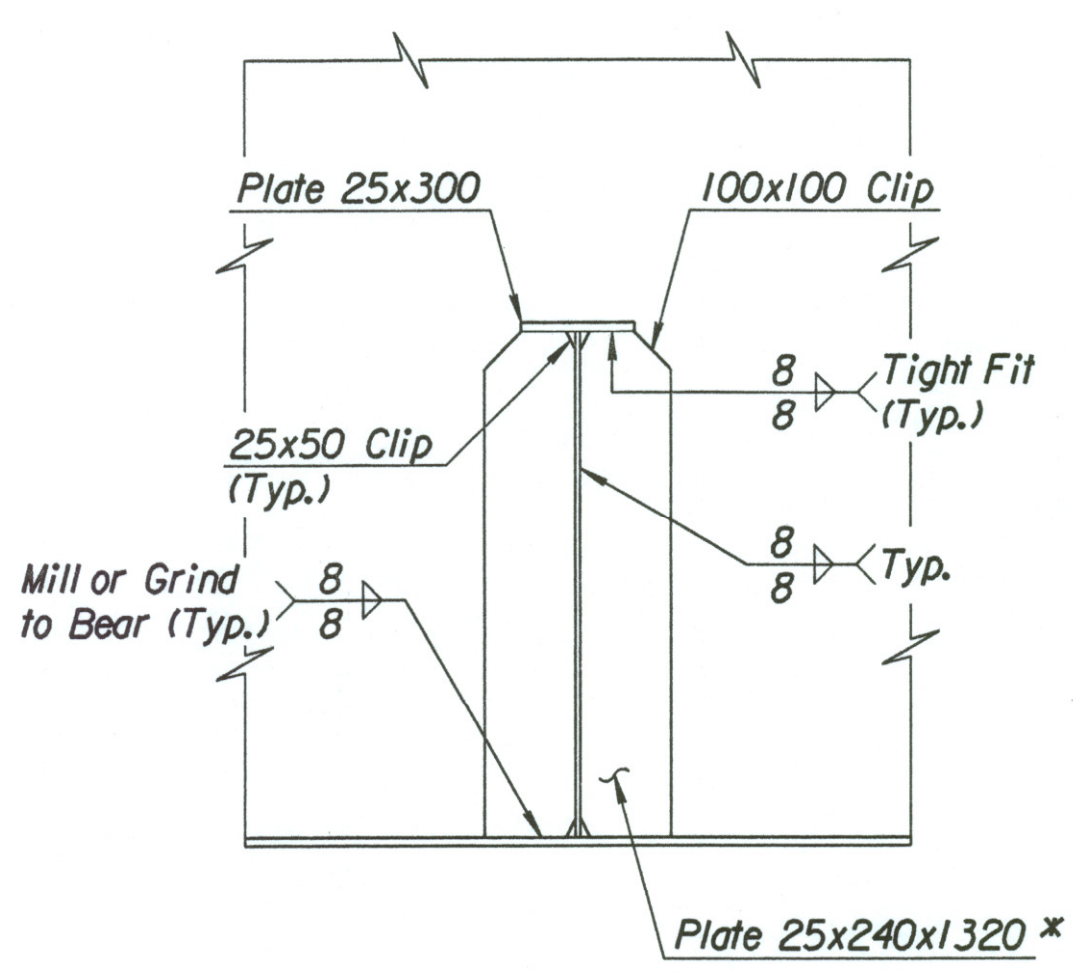


ABUTMENT DIAPHRAGM
(8 Required per Bridge)

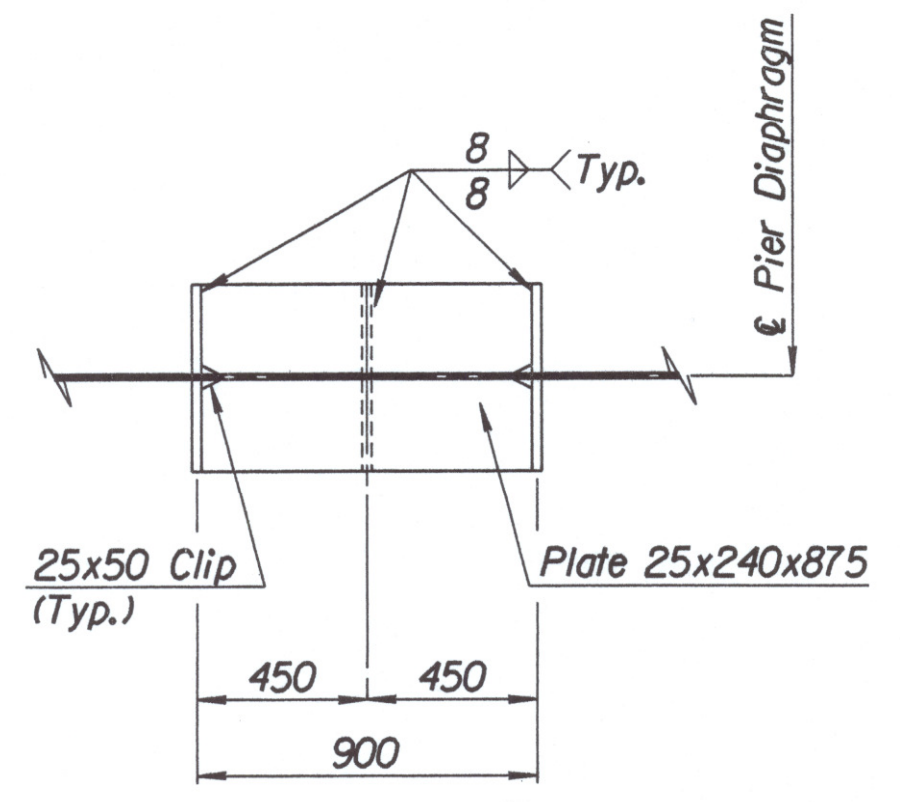
* M20M Grade 345 T2



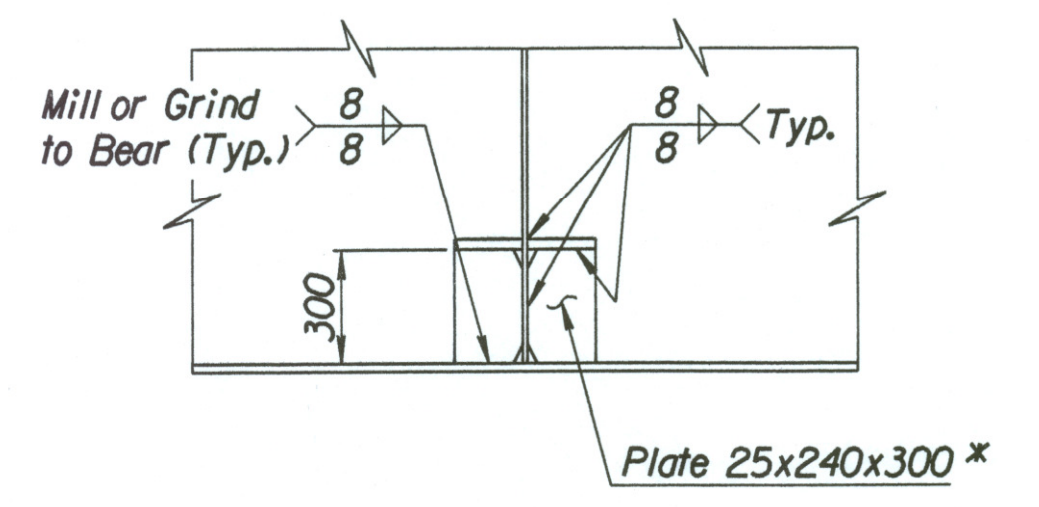
PLAN AT PIER BEARING



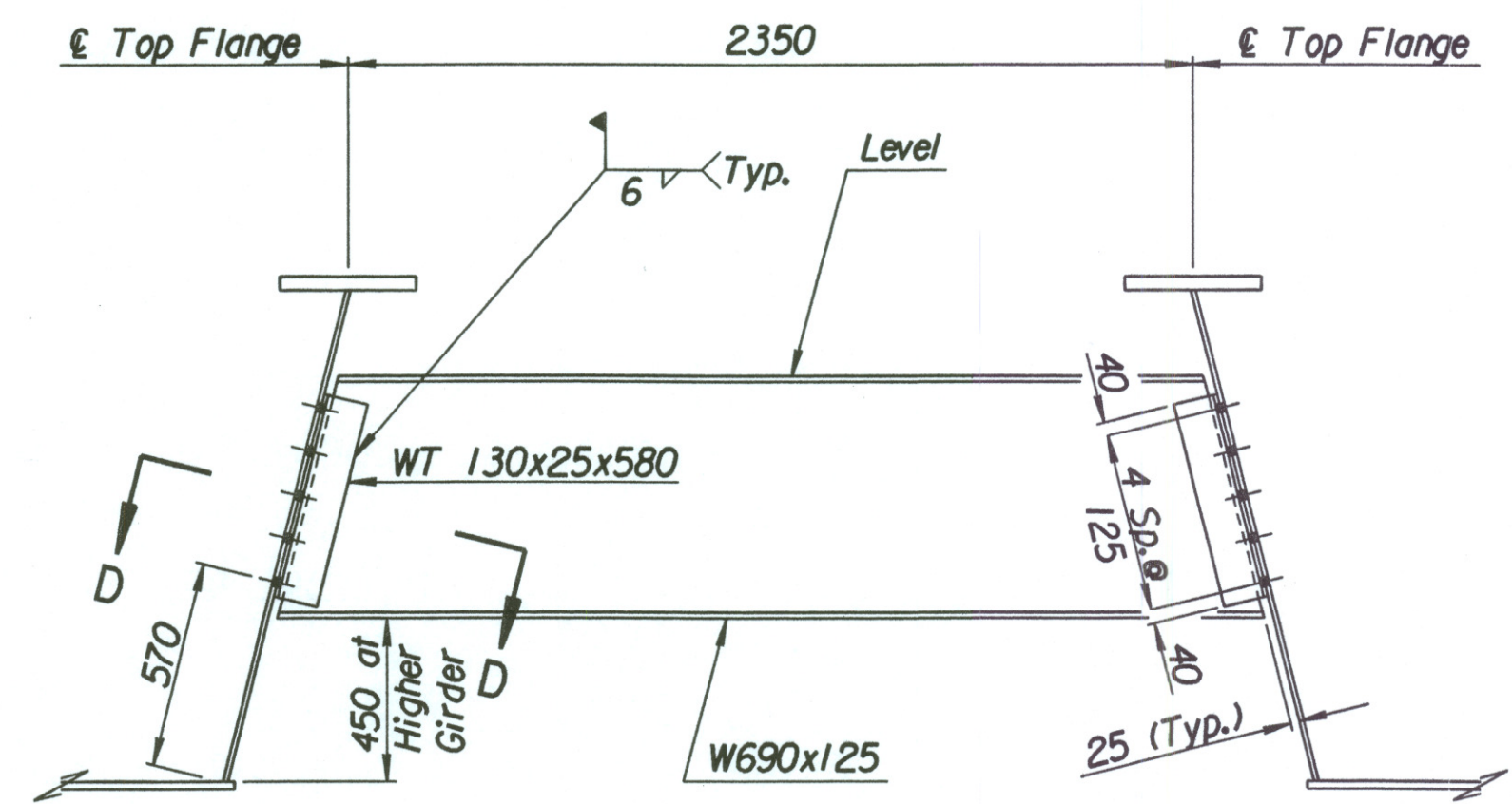
SECTION A-A



SECTION B-B

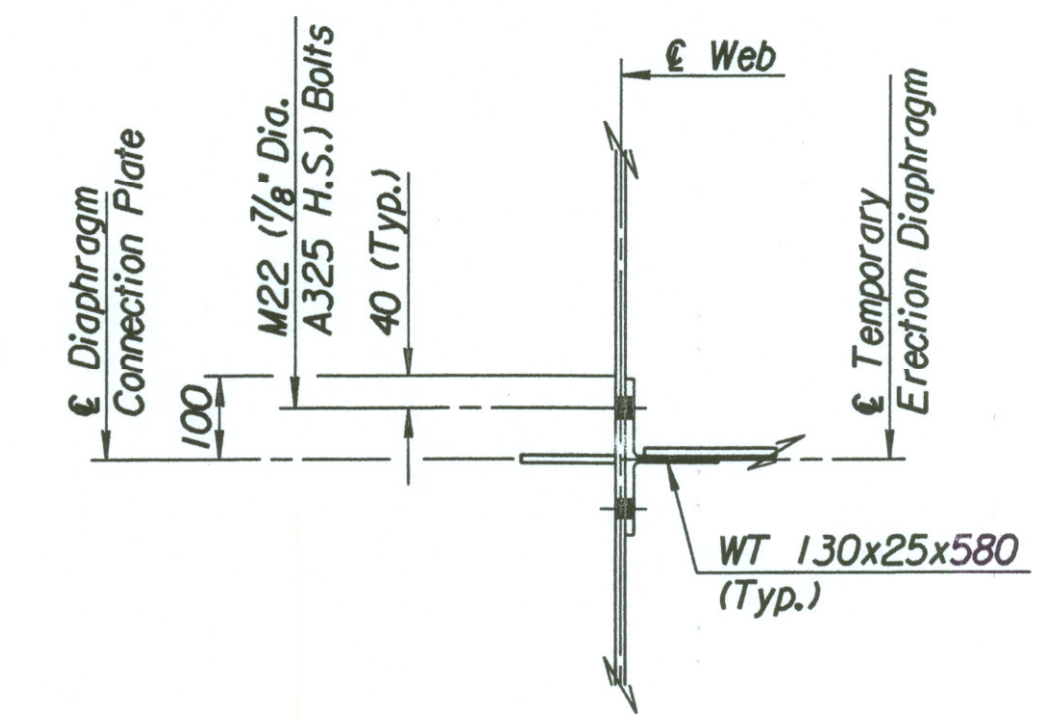


SECTION C-C

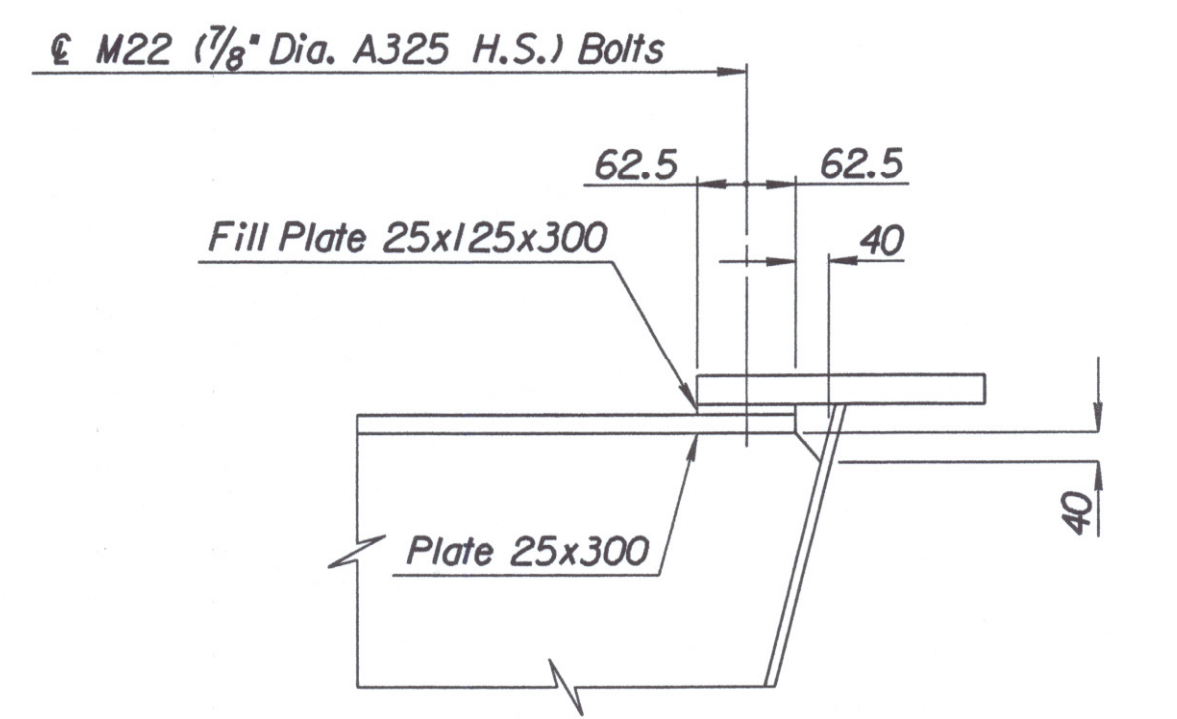


TEMPORARY ERECTION DIAPHRAGM
(51 Required per Bridge)

Note:
The Temporary Erection Diaphragms shall be in place during placement and curing of the deck, after which they shall be removed with the exception of the M22 (7/8" Dia. A325 H.S.) Bolts through the Web, which shall be reinserted in the holes and tightened.
Temporary Erection Diaphragms, WT Shapes and Bolts shall not be paid for directly, but shall be subsidiary to the bid item "Structural Steel A709M (Gr. 250)". After removal they shall become the property of the Contractor.

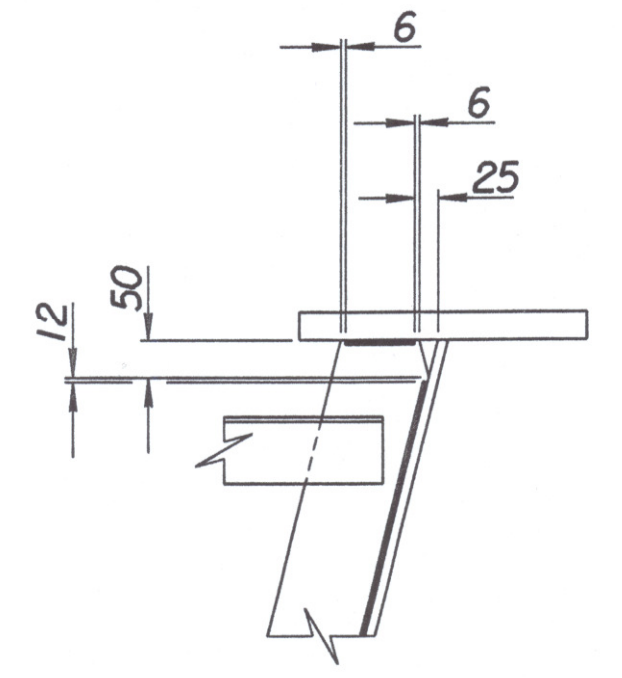


SECTION D-D



DETAIL A

Note:
Bolt Hole Spacing for the Fill Plate is shown on the Lateral Bracing Detail.



TYPICAL CLIP AND WELD DETAIL

No.		Revisions		By	Date
CITY OF WICHITA					
BR. NO. 54-87-19.05 (489) W.B.			STA. 15+612.397		
BR. NO. 54-87-19.06 (491) E.B.			STA. 15+612.397		
DIAPHRAGM DETAILS					
KELLOGG (US-54)					
OVER MAIZE ROAD					
SEDGWICK COUNTY					
Professional Engineering Consultants, P.A.					
303 S. TOPEKA • WICHITA, KANSAS 67202					
316-262-2691 • FAX 316-262-3003					
Designed by	P.D.F.	Checked by	R.A.S.		
Drawn by	W.L.L.	Date	April 2002	Job No. 97362	

Drawn by: will
 Plotted by: will 3-26-2002
 i:/1997/97362/001/bridge/maizer/diaphragm