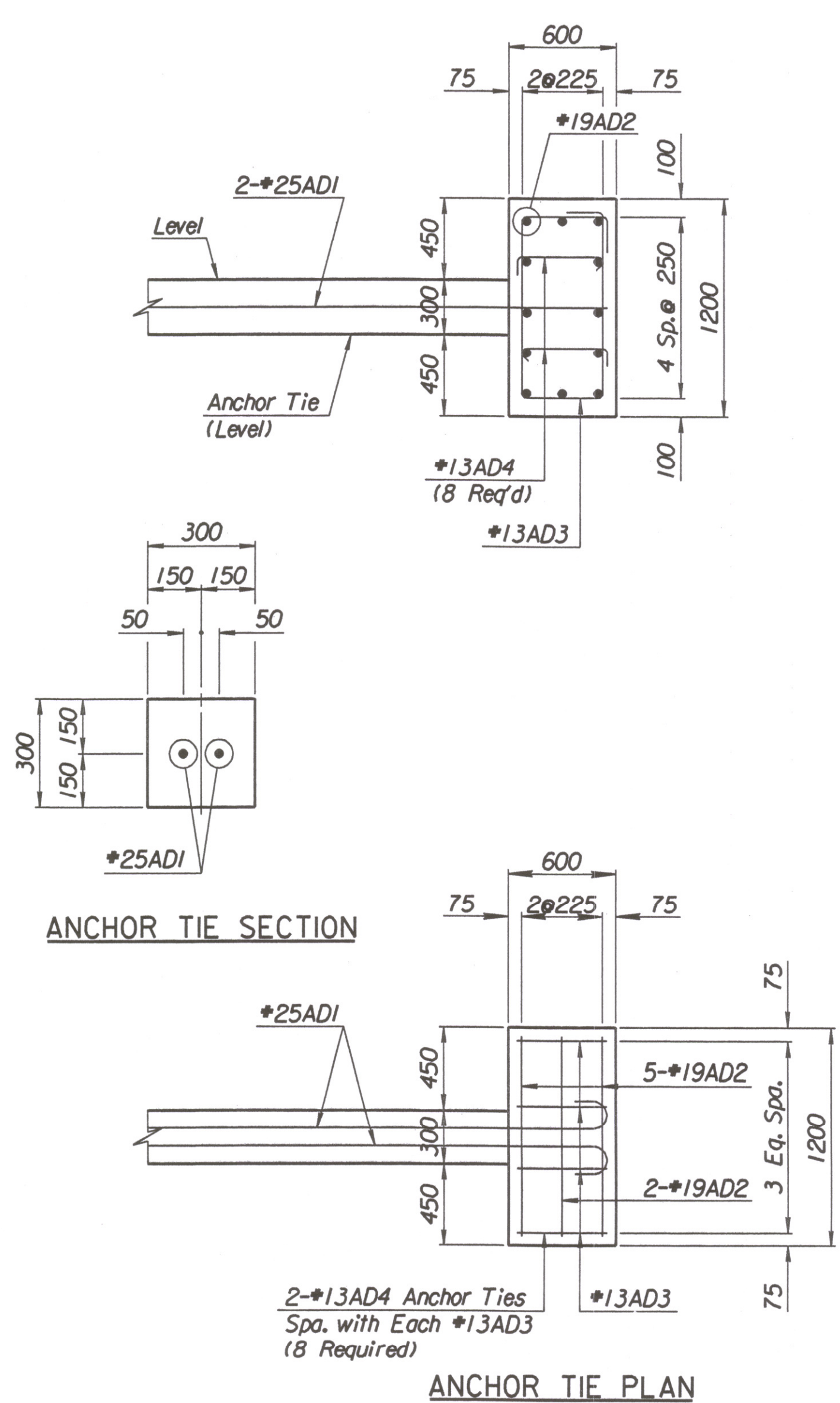
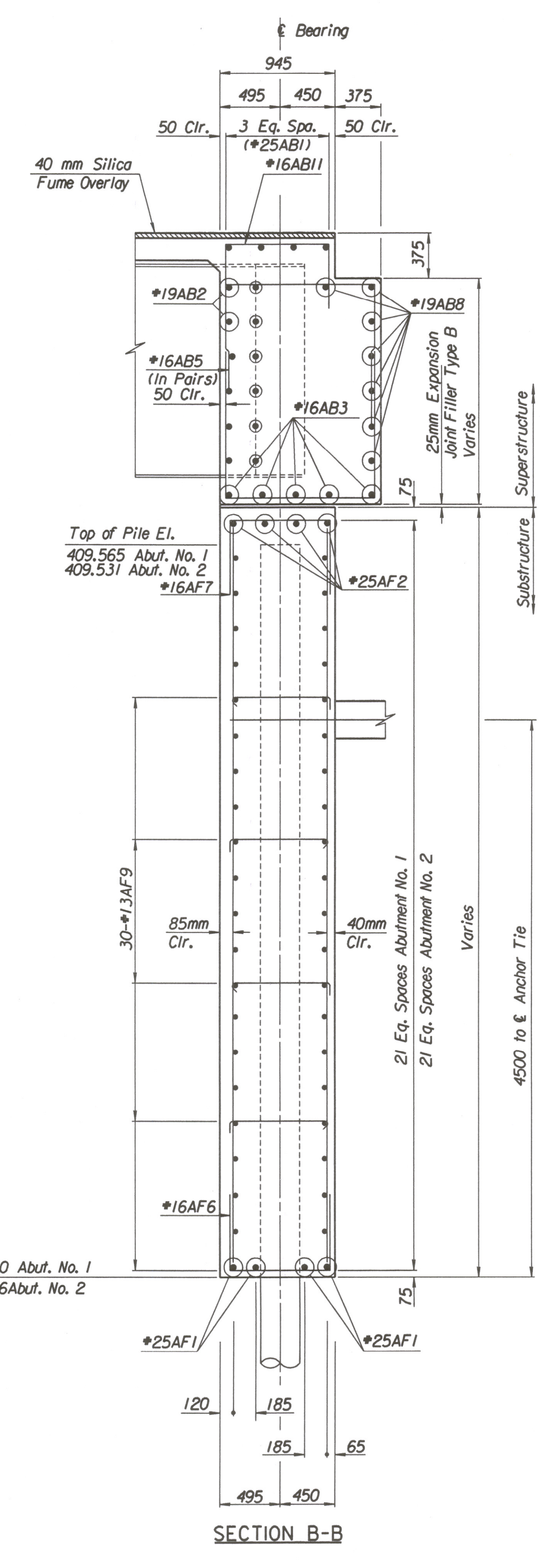
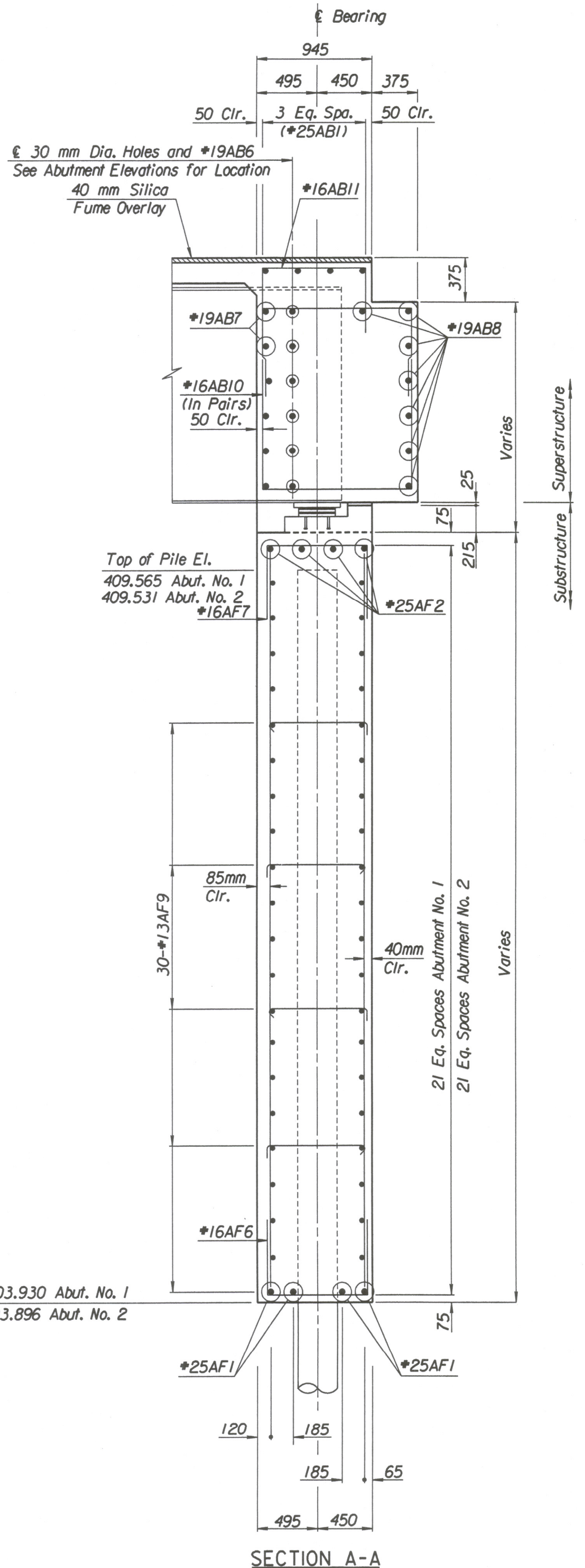


STATE	PROJECT NO.	YEAR	SHEET NO.	TOTAL SHEETS
KANSAS	54-87 K-6657-01	2002	577	1122



Drawn By: ras
Plotted By: svb 3-22-2002
I:/1997/97362/001/bridge/tyler/abut1eb.dgn

No.	Revisions	By	Date
CITY OF WICHITA			
BR. NO. 54-87-20.12(497) E.B.		STA. 17+332.607	
KELLOGG OVER TYLER ROAD ABUTMENT SECTIONS			
SEDGWICK COUNTY			
Professional Engineering Consultants, P.A. 303 S. TOPEKA • WICHITA, KANSAS 67202 316-262-2691 • FAX 316-262-3003			
Designed by	RAS	Checked by	RAS
Drawn by	RAS	Date	April, 2002
		Job No.	97362