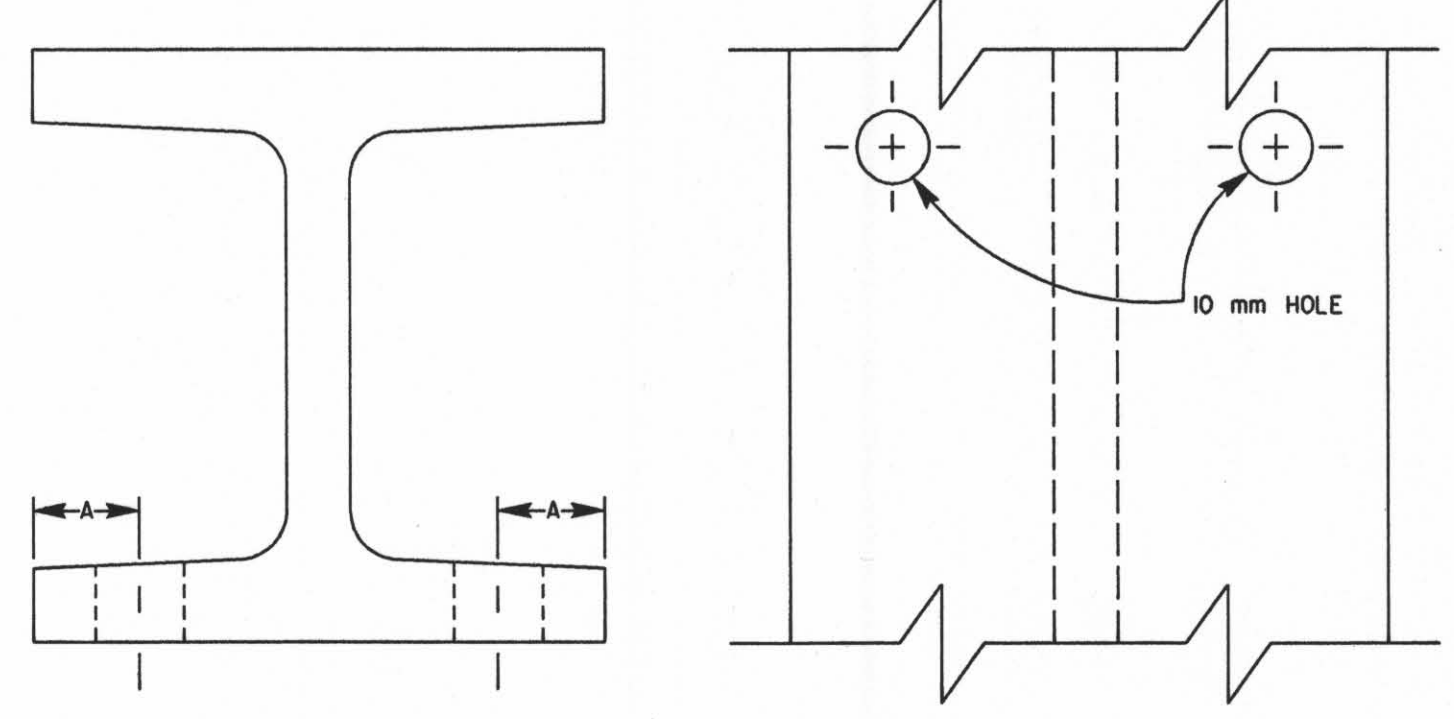
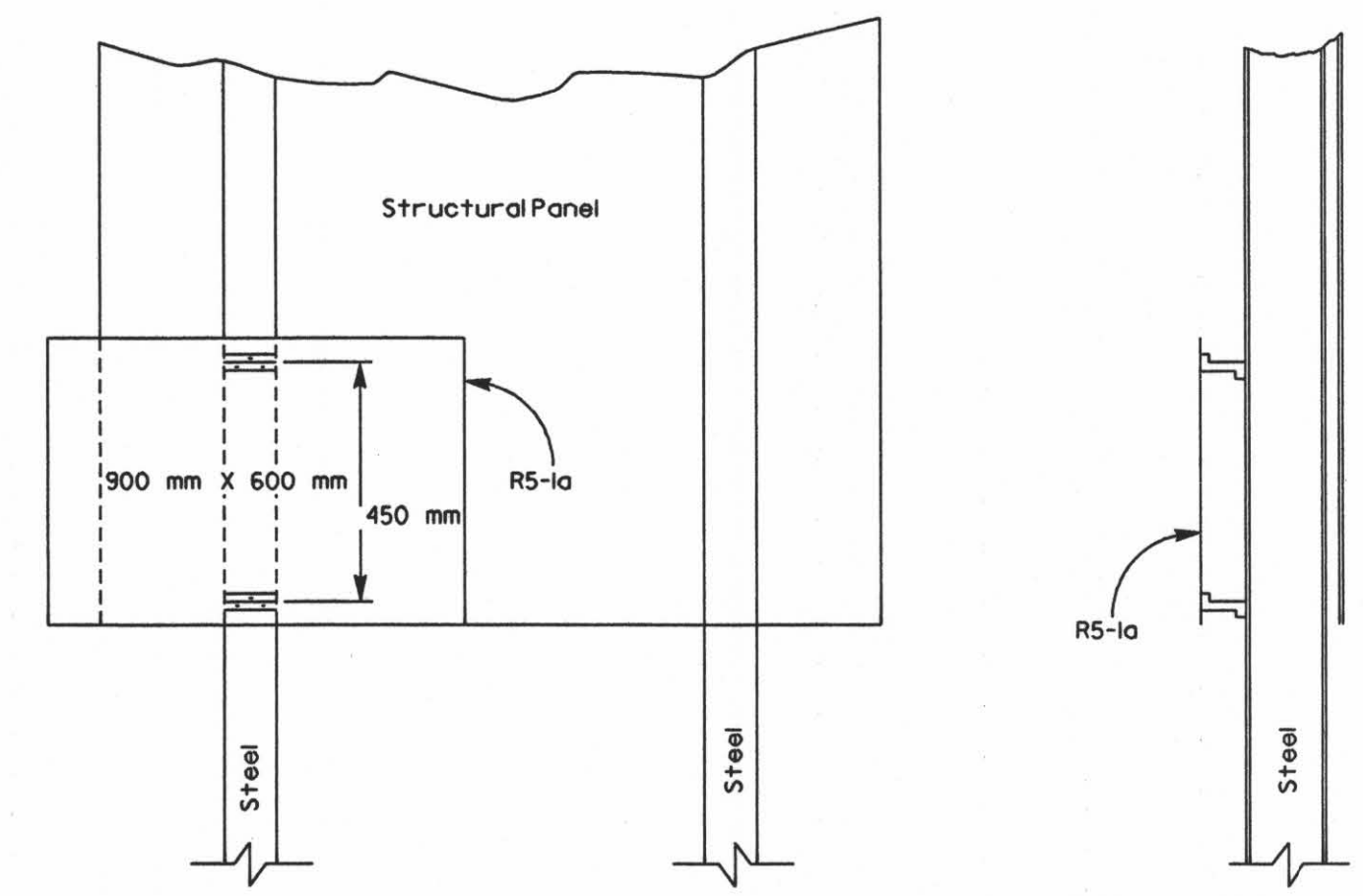


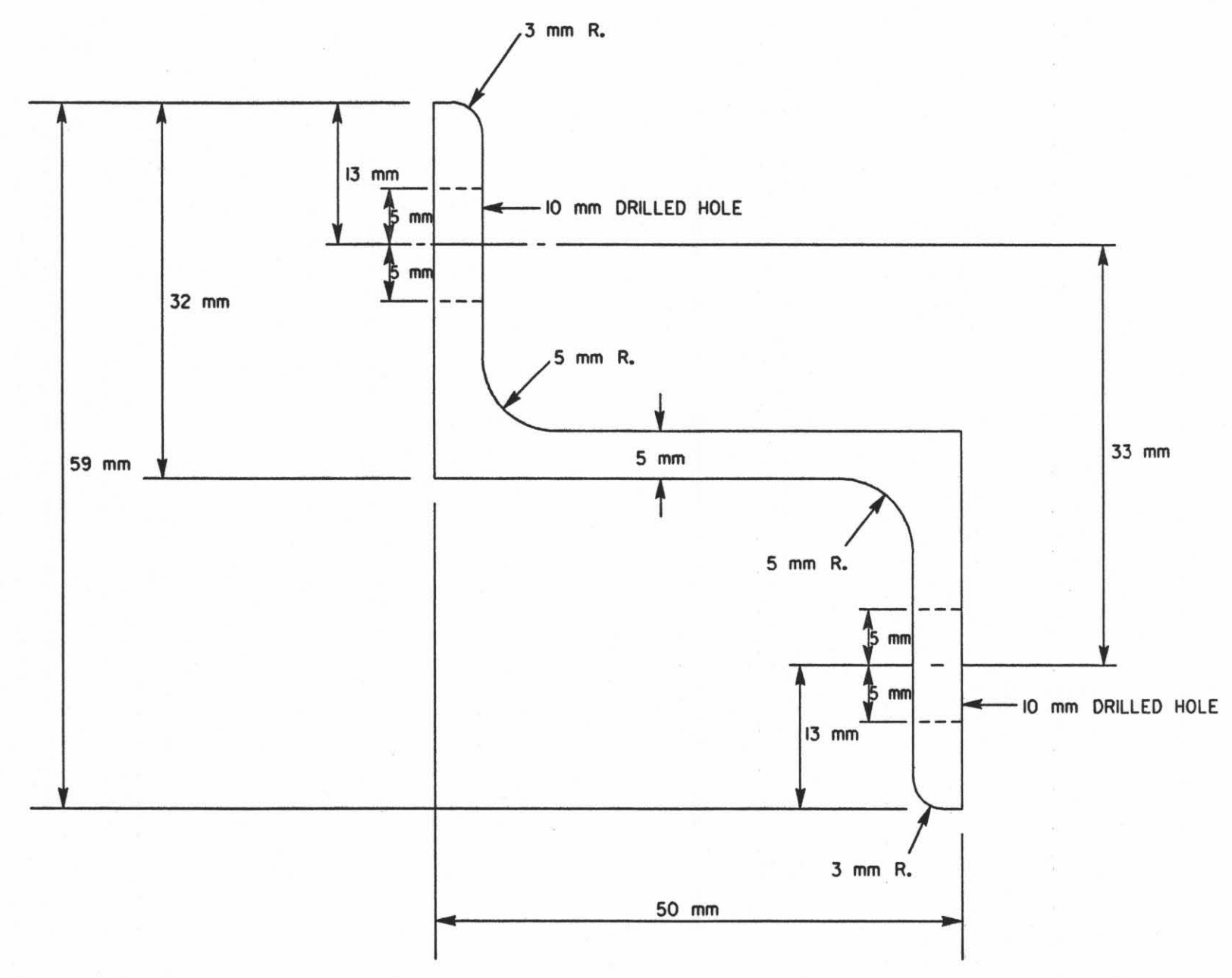
BEAM	A
S75X8.5	11 mm
W150X13	19 mm
W250X18	32 mm
W250X33	32 mm



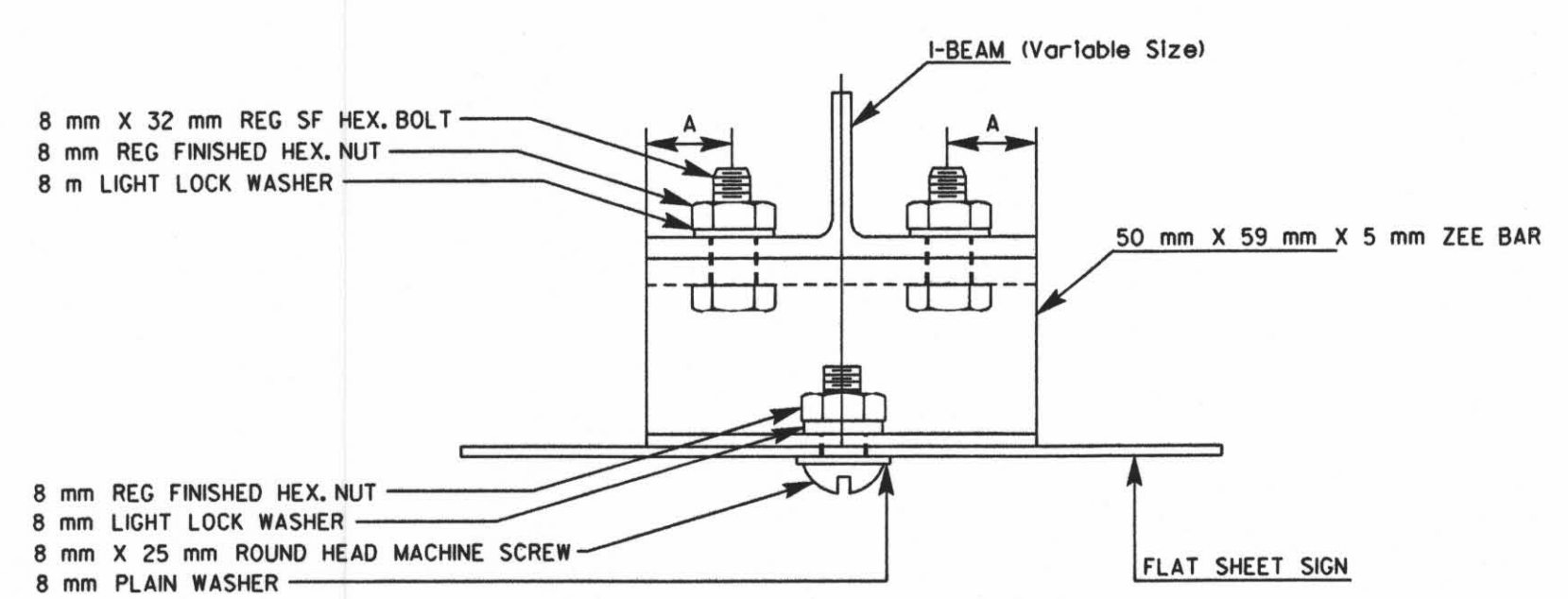
TYPICAL I-BEAM



Mounting of R5-1a on Steel



TYPICAL ZEE BAR (ASTM B308)



NOTE:  
 ALL BOLTS, NUTS, WASHERS & MACHINE SCREWS SHALL BE STEEL FASTENING ACCESSORIES:  
 All items of fastening accessories are required to be Zinc or Cadmium plated. The machine screws, nuts and washers shall comply with Sec. 1614 of the Standard Specifications For State Road and Bridge Construction (1990 Edition).

All dimensions are in millimeters.

3				
2				
1				
NO.	DATE	REVISION	BY	APP'D

**KANSAS DEPARTMENT OF TRANSPORTATION**  
 MOUNTING DETAILS FOR  
 FLAT SHEET SIGN ON  
 STEEL I-BEAM POST

TE632SI 7-13-93

DESIGNED	QUANTITIES	APP'D	NELDA A BUCKLEY
DESIGN CK.	DETAIL CK.	QUAN. CK.	TRACE CK.

DSNR: OPER: SVB SCALE: 1:1997/97362/SIGNING/STANDARDS/TE632SI.DGN 11-19-2001 14:41:05 LAST REV: 1-25-2002 BY: svb