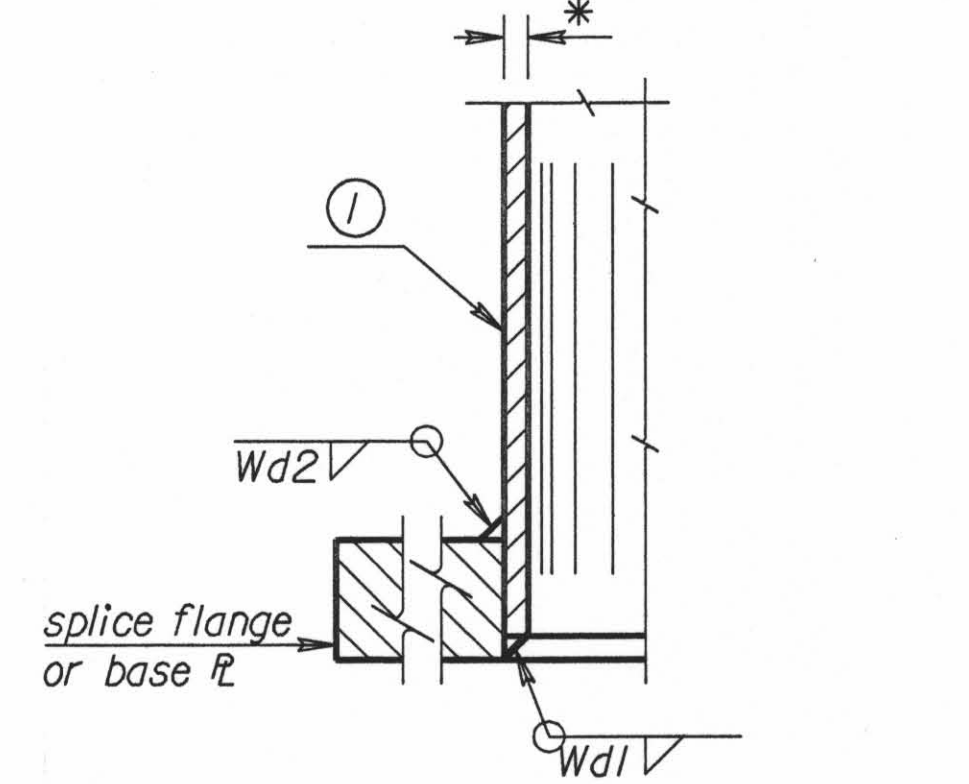
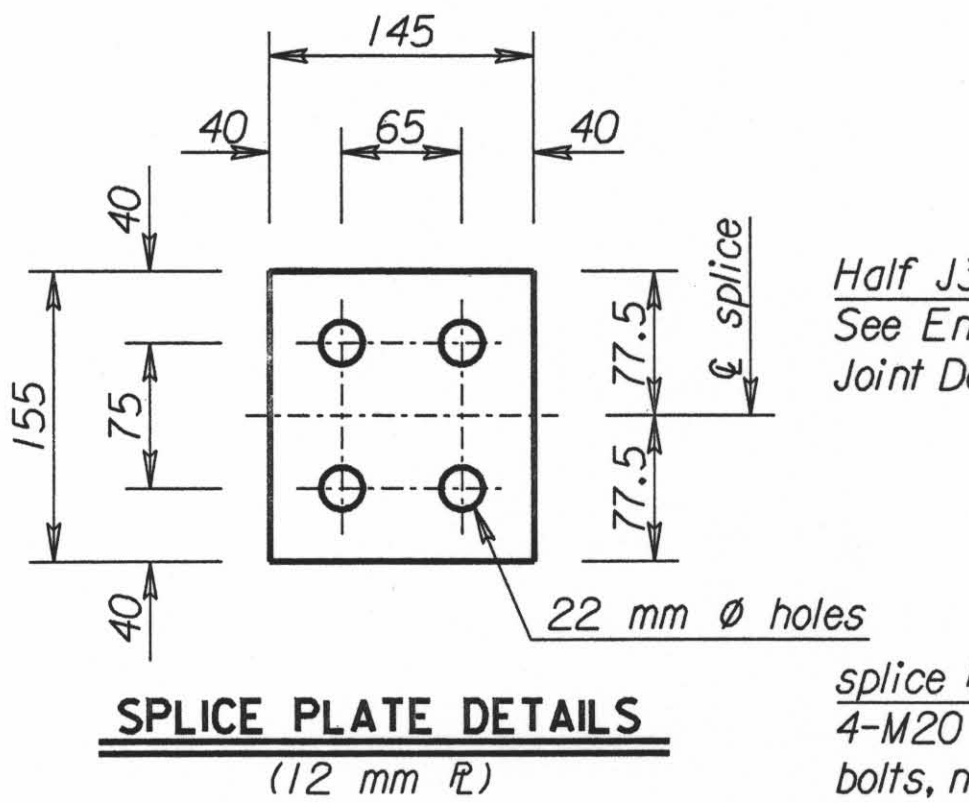
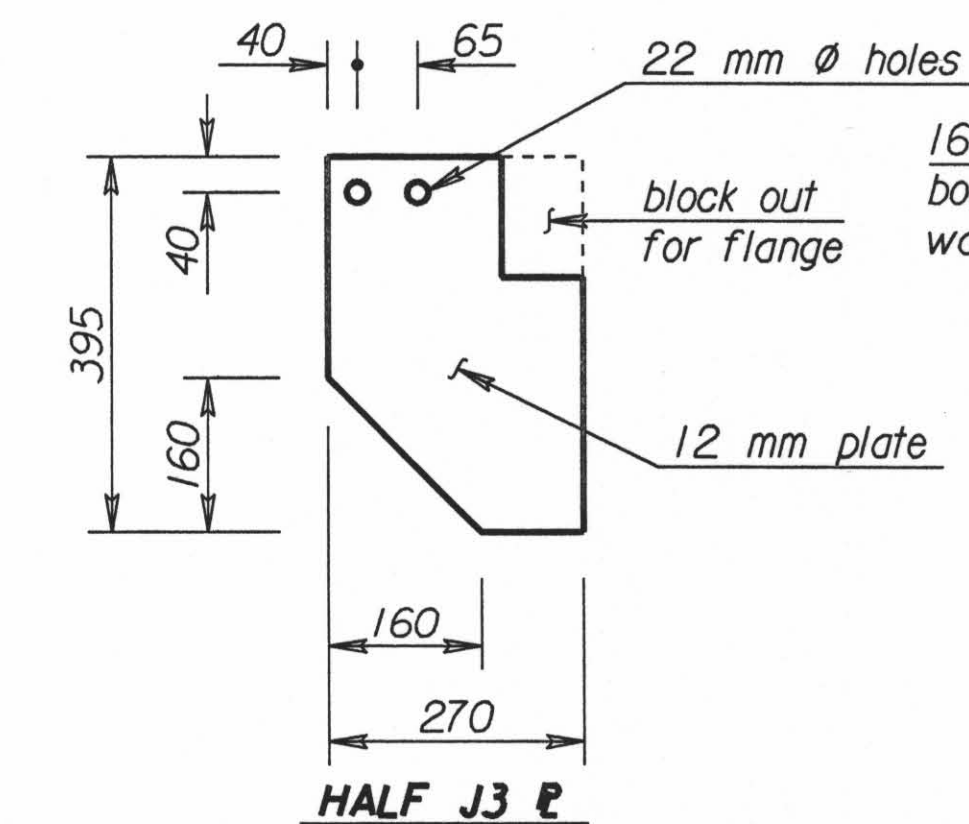
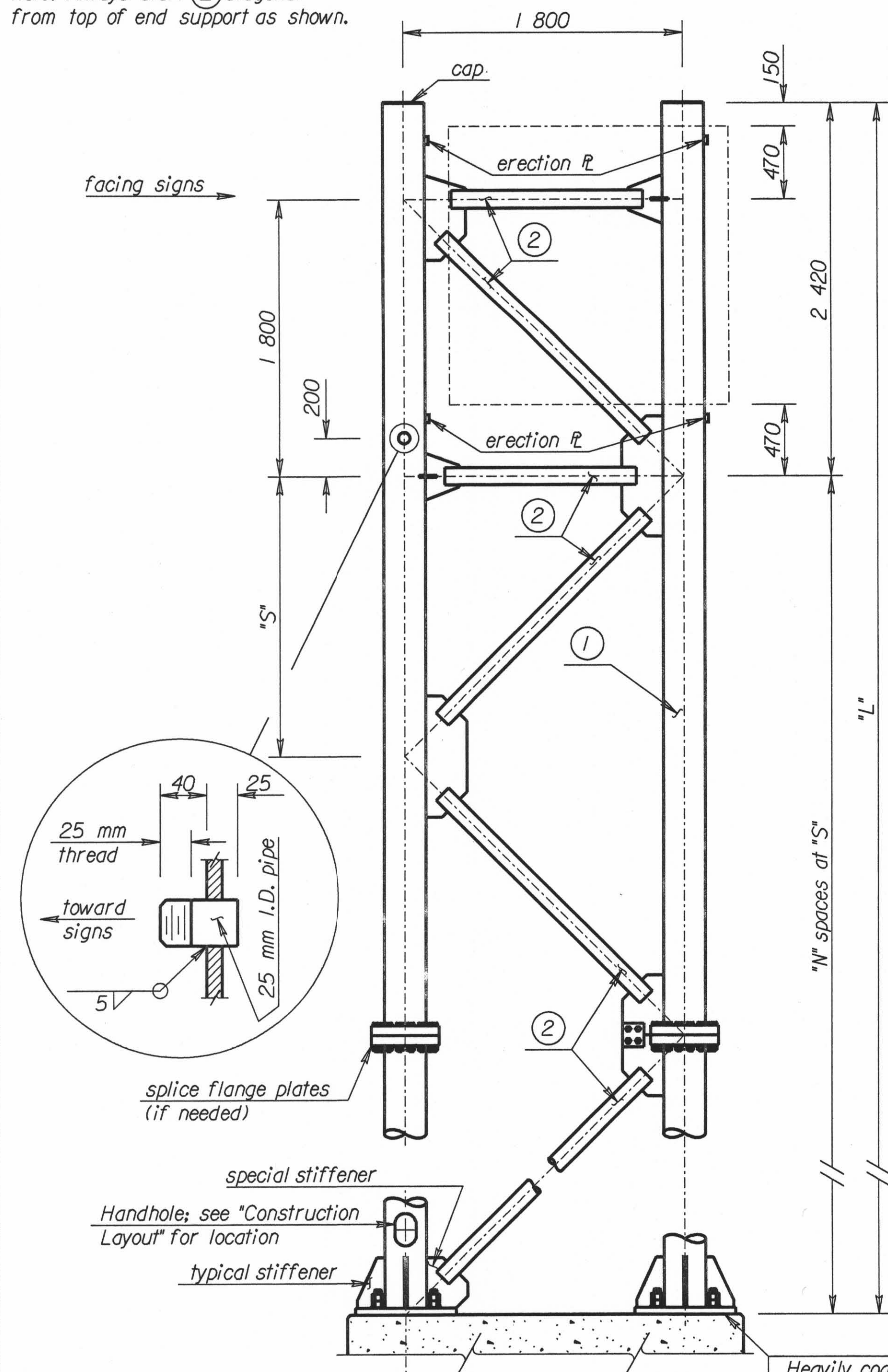


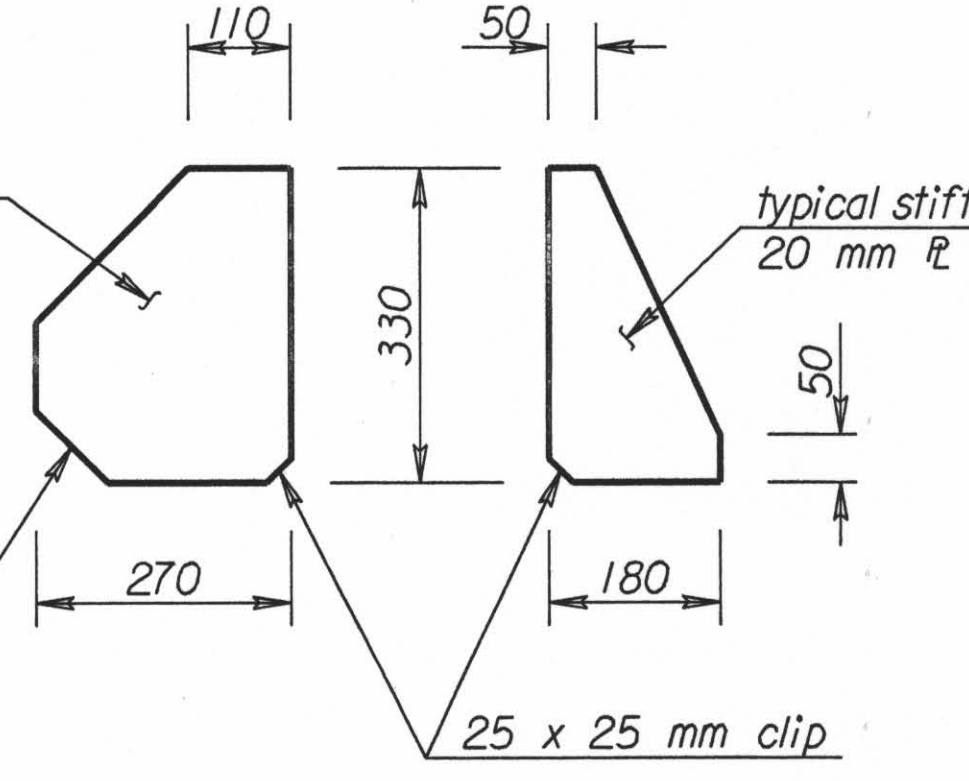
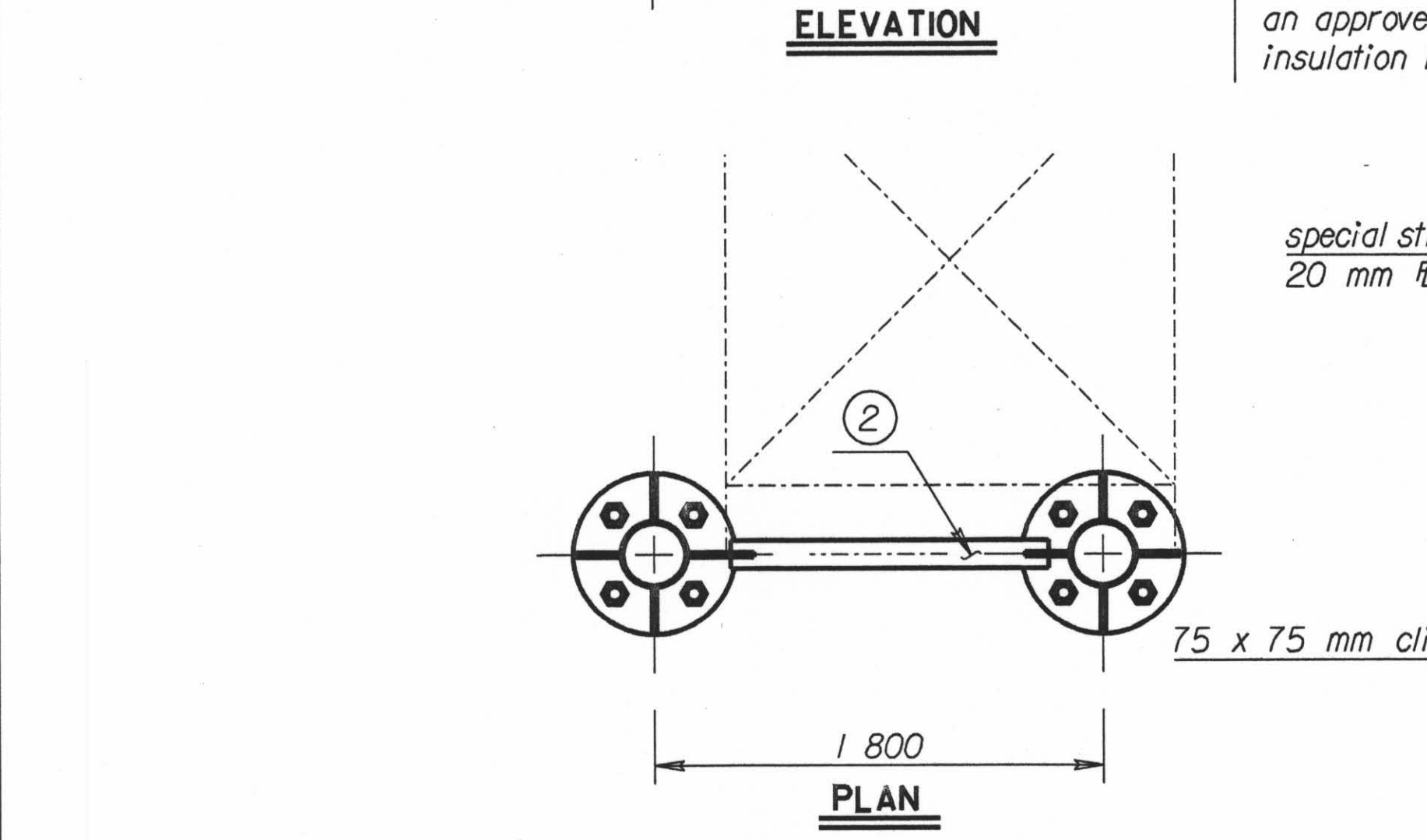
Note: Always start ② diagonal from top of end support as shown.

| STATE | PROJECT NO. | YEAR | SHEET NO. | TOTAL SHEETS |
|--------|-----------------|------|-----------|--------------|
| KANSAS | 54-87 K-6657-01 | 2002 | 768 | 1122 |

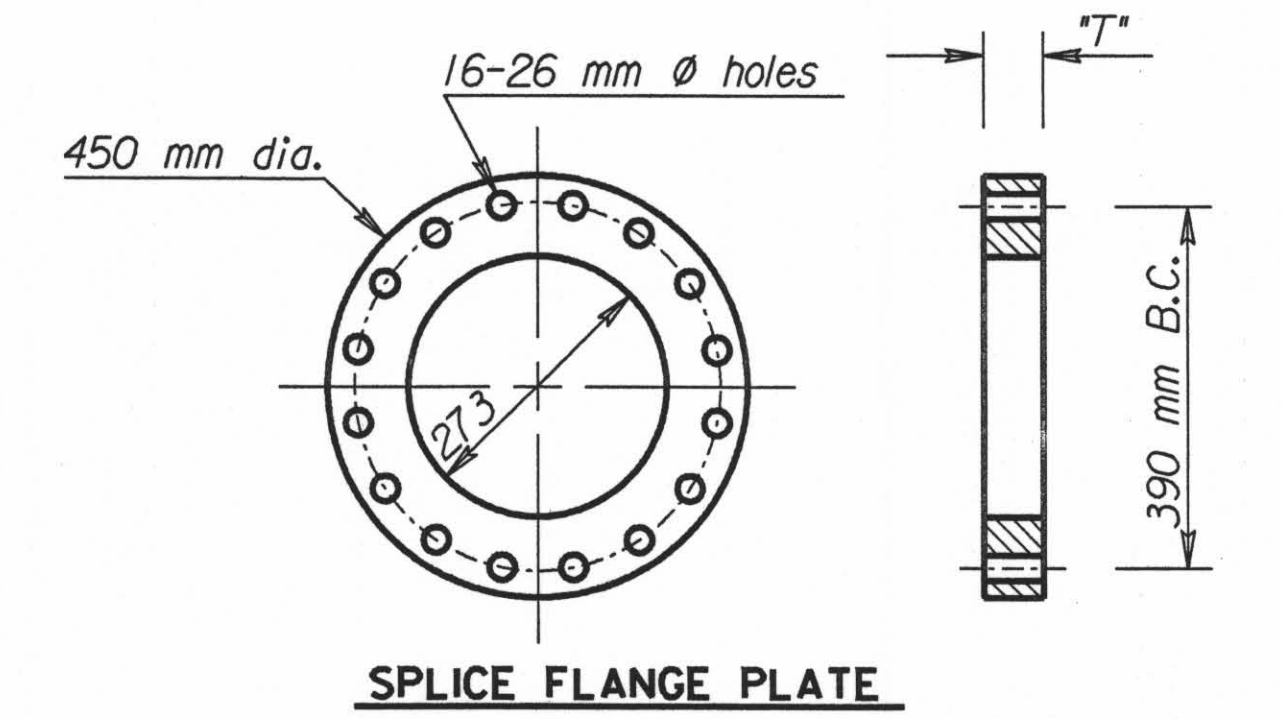
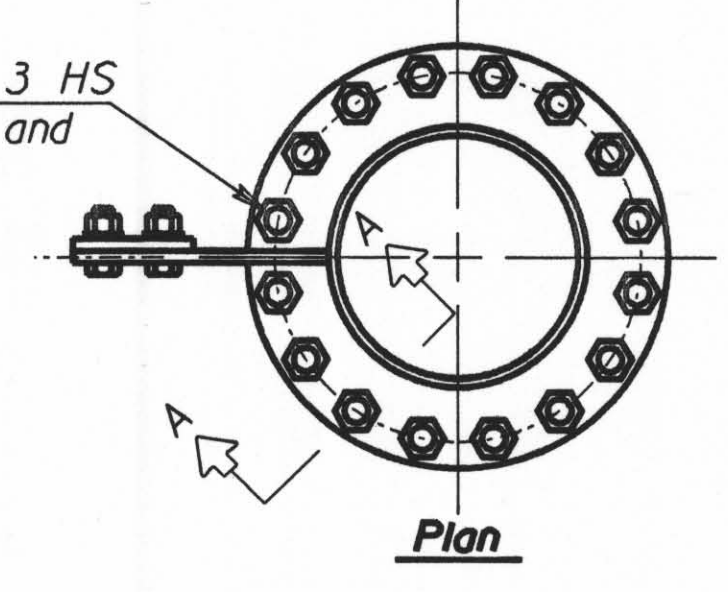


Section A-A
Make Wd1 depth equal to pipe wall thickness, build out to obtain full throat.

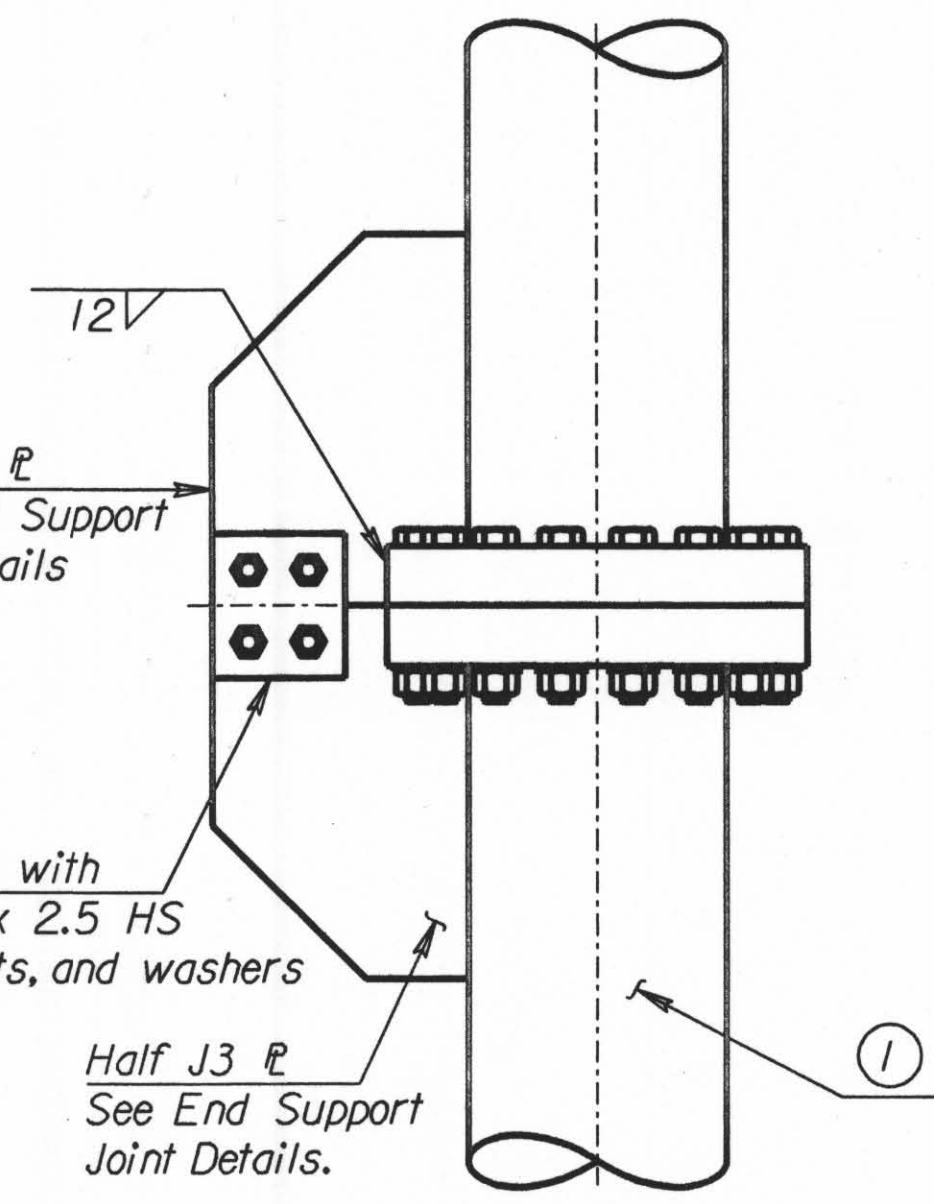
Heavily coat the bottom of the end supports with an approved insulating material to provide complete insulation between the aluminum and the concrete.



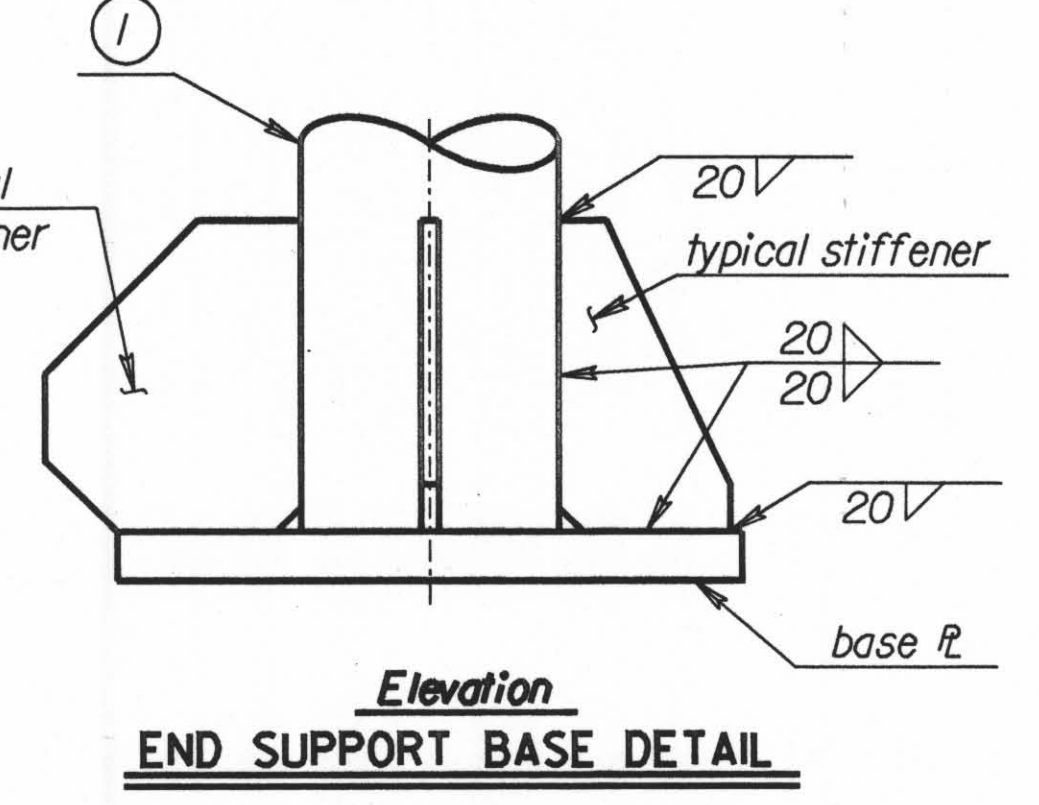
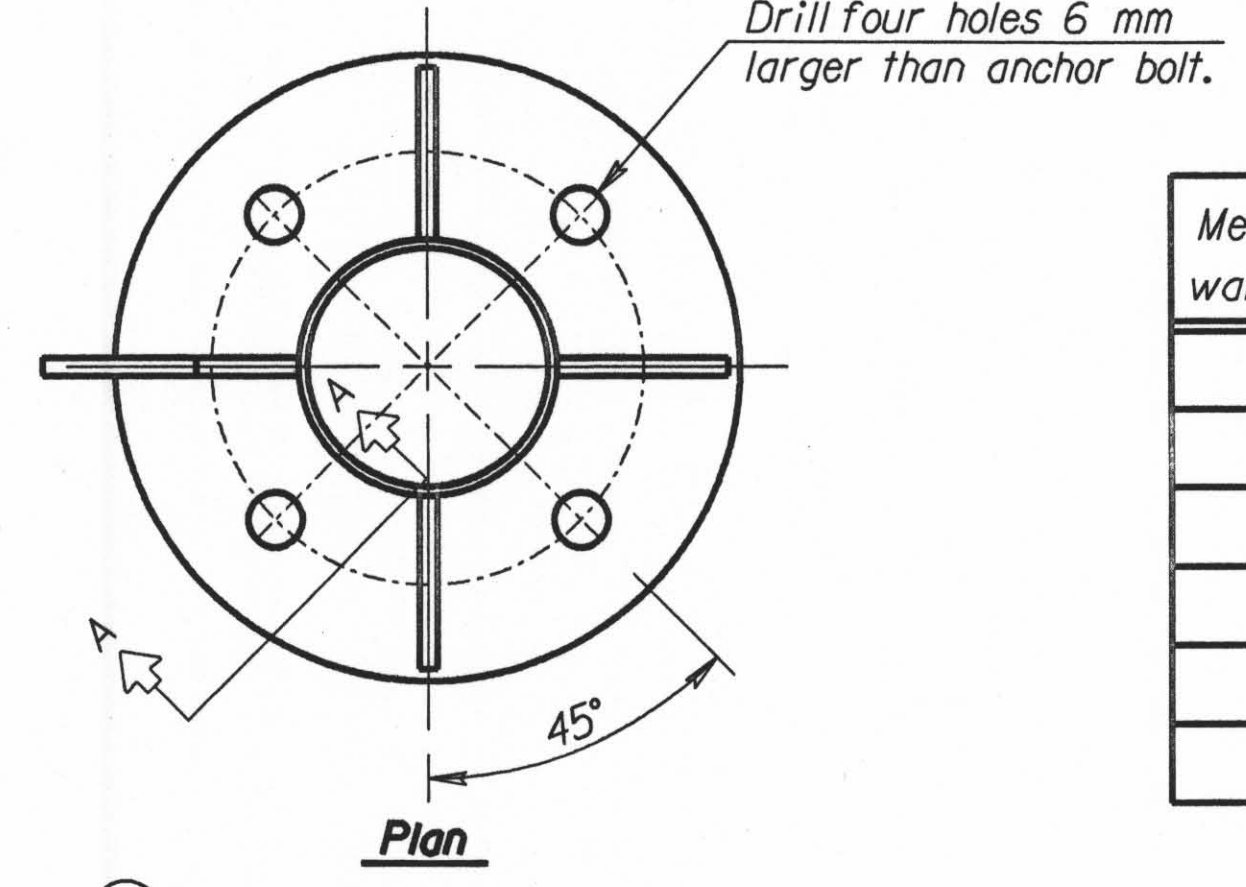
Stiffener Details



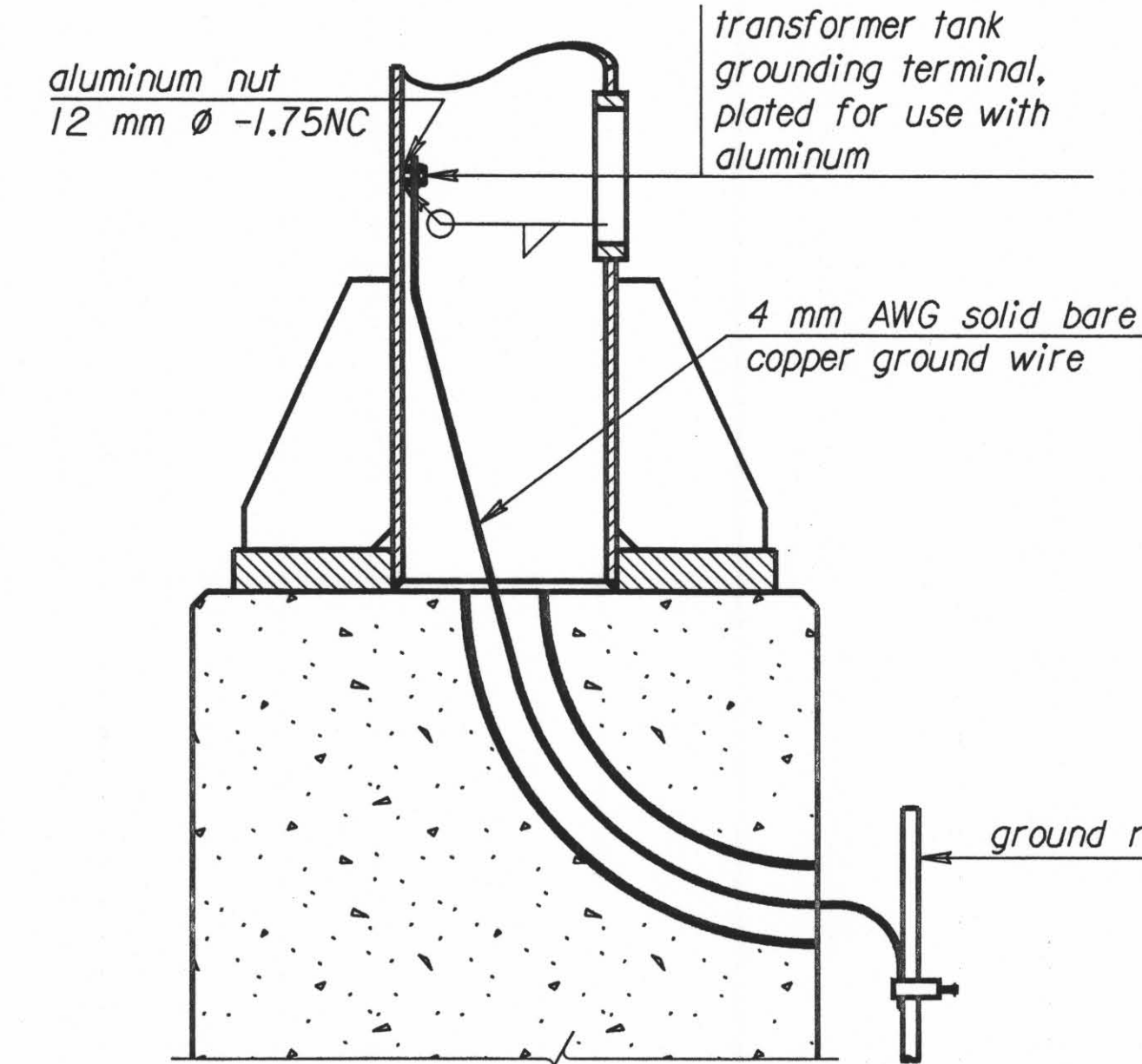
SPLICE FLANGE PLATE



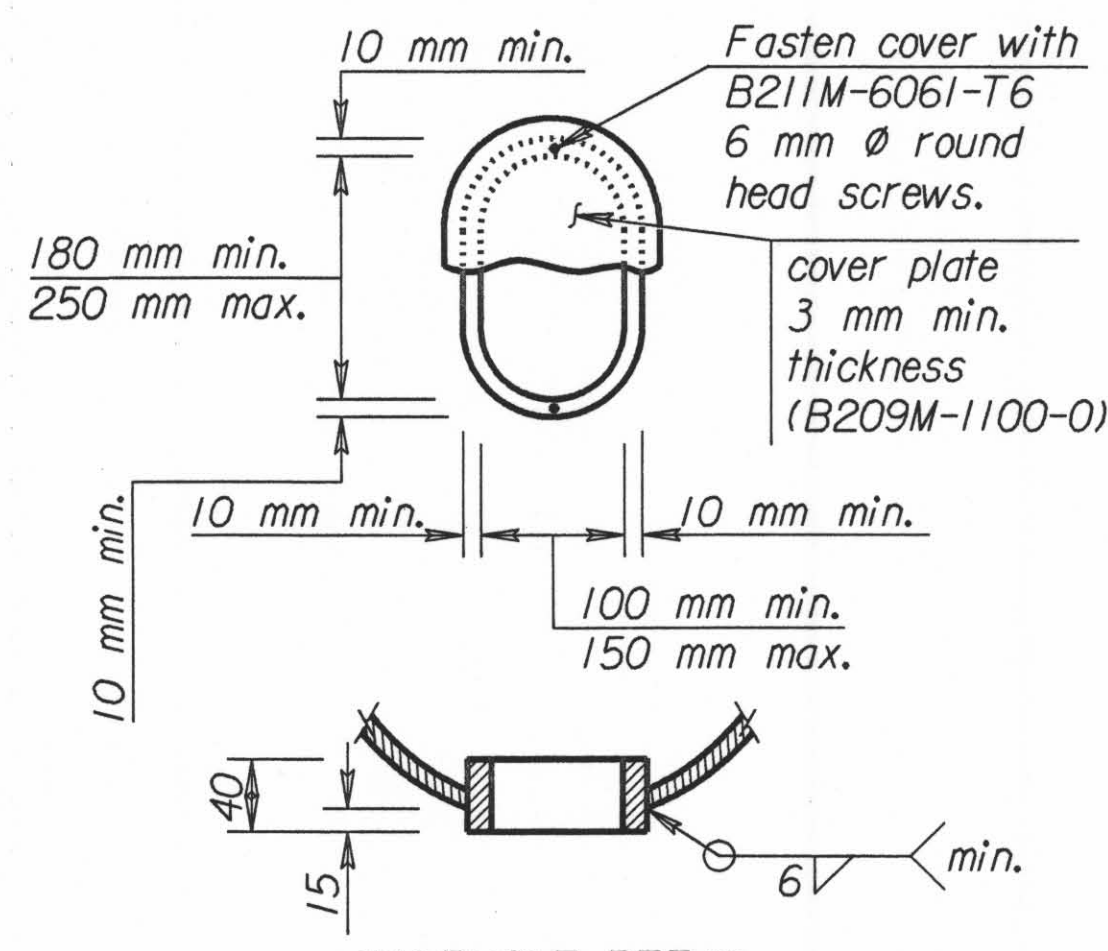
END SUPPORT SPLICE DETAIL (Optional)



END SUPPORT BASE DETAIL



GROUNDING DETAILS



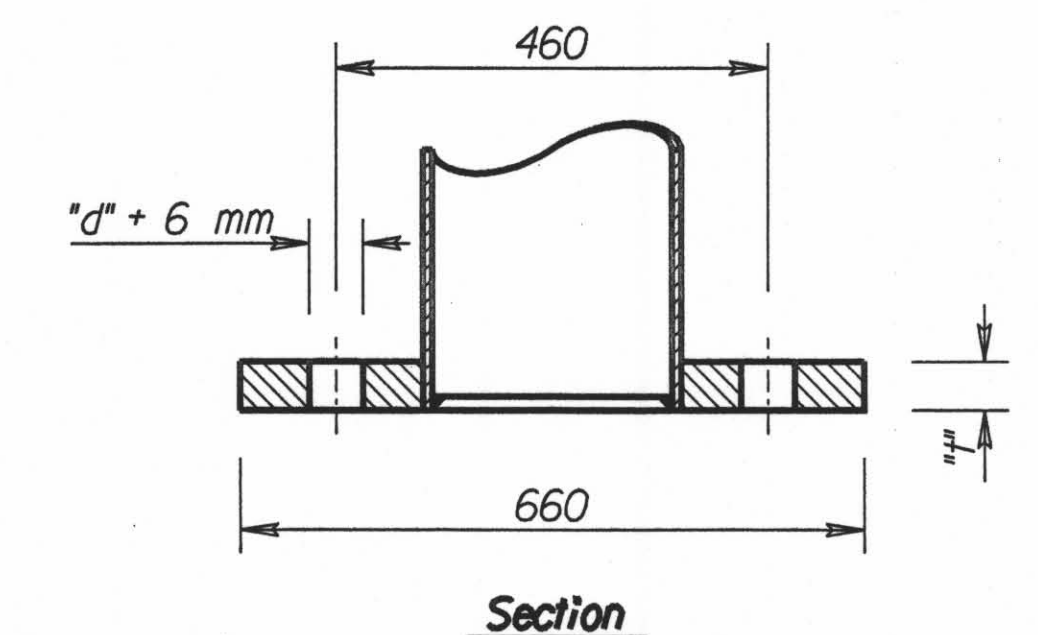
HANDHOLE DETAIL

Note: Use a handhole frame bar whose net area is at least 60 percent of the pole section removed. Maintain the pole section properties at the handhole. Build the frame from a bar conforming to ASTM B209M-6061-T6 or a casting conforming to ASTM B26-356-T6.

Member ① is 273 mm O.D. pipe.
Member ② is 114 mm O.D. pipe.

| Member ① * wall thickness | Fillet Weld size Wd2 | Anchor Bolt "d" | Base fl "t" | Splice fl "T" |
|---------------------------|----------------------|-----------------|-------------|---------------|
| 4.19 | 6 | 30 | 30 | 40 |
| 7.80 | 10 | 36 | 45 | 50 |
| 9.27 | 11 | 42 | 45 | 55 |
| 12.7 | 14 | 48 | 50 | 65 |
| 15.1 | 16 | 56 | 60 | 70 |
| 18.2 | 20 | 56 | 70 | 80 |

* See "Construction Layout" for wall thickness, "N", "S", and "L".



Section

Std. Base File: sl151bsi.dgn - Plot 1
Plotted By: \$\$\$USERNAME\$\$\$ Plot Location: \$UNIT\$
File: \$\$\$DGNFILE\$\$\$
Plot Date: \$\$\$SYTIME\$\$\$

| NO. | DATE | REVISIONS | BY | APP'D |
|--|------|------------|-----|------------|
| KANSAS DEPARTMENT OF TRANSPORTATION STANDARD STRUCTURAL SIGN SUPPORTS SPAN TYPE OVERHEAD ALUMINUM ALTERNATE END SUPPORT FRAMING PLAN AND SPLICE DETAILS SL151B-01 SI SEDGWICK CO. | | | | |
| DESIGNED | BFM | DETAILED | DDP | QUANTITIES |
| DESIGN CR. | RDH | DETAIL CR. | RDH | QUAN. CR. |