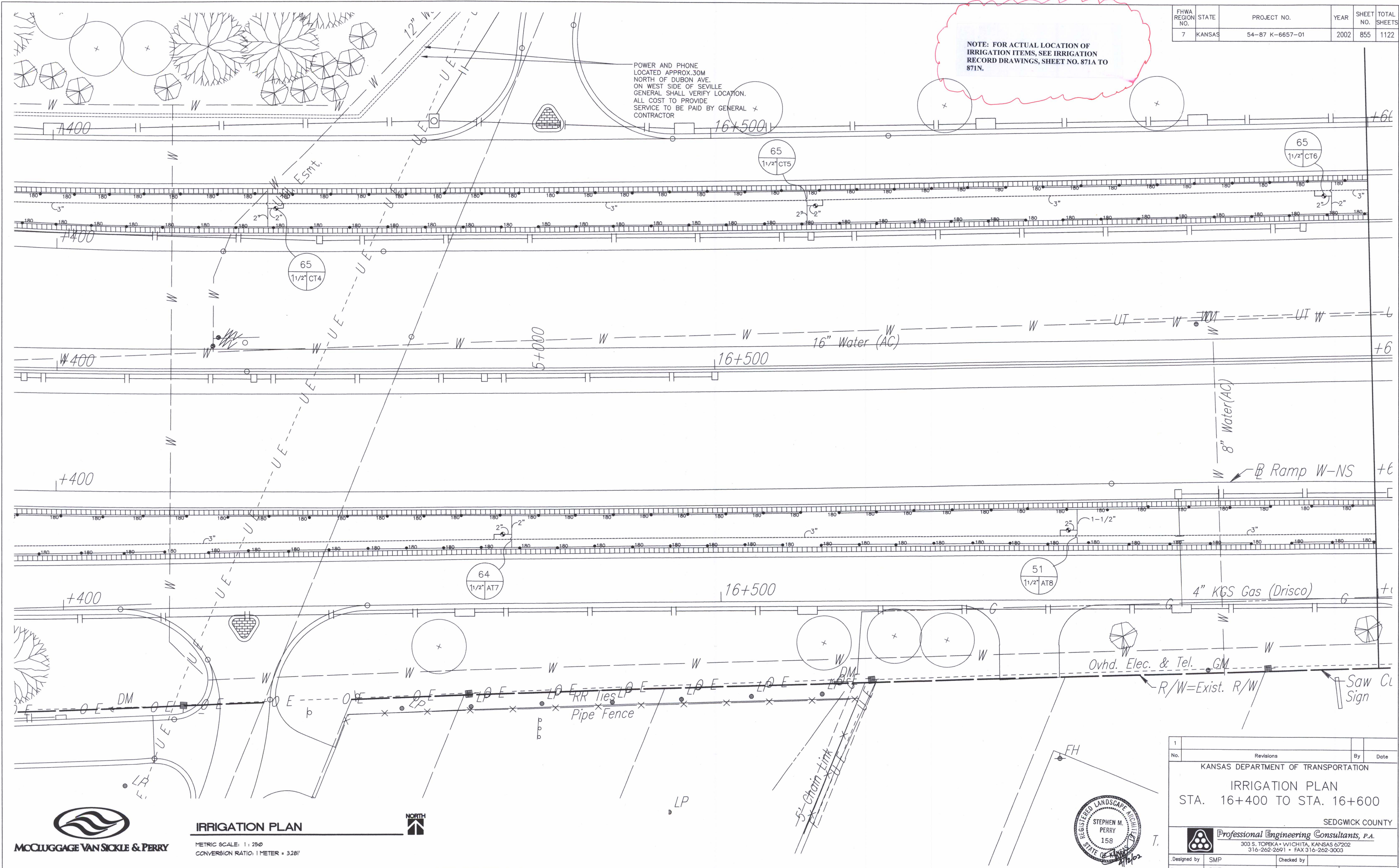


FHWA REGION NO.	STATE	PROJECT NO.	YEAR	SHEET NO.	TOTAL SHEETS
7	KANSAS	54-87 K-6657-01	2002	855	1122

NOTE: FOR ACTUAL LOCATION OF IRRIGATION ITEMS, SEE IRRIGATION RECORD DRAWINGS, SHEET NO. 871A TO 871N.

POWER AND PHONE LOCATED APPROX. 30M NORTH OF DUBON AVE. ON WEST SIDE OF SEVILLE GENERAL SHALL VERIFY LOCATION. ALL COST TO PROVIDE SERVICE TO BE PAID BY GENERAL CONTRACTOR

DATE	
BY	
REFERENCES NOTED	
REFERENCES CHECKED	

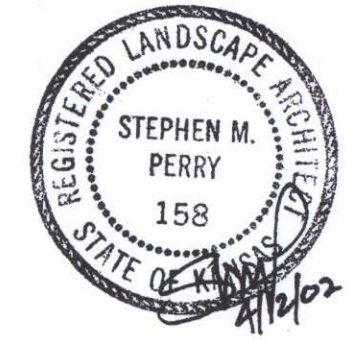


DSNR: OPER. DWR SCALE: 1:500 F: 9934/162



IRRIGATION PLAN

METRIC SCALE: 1:250
CONVERSION RATIO: 1 METER = 3.281'



1		Revisions		By	Date
KANSAS DEPARTMENT OF TRANSPORTATION					
IRRIGATION PLAN					
STA. 16+400 TO STA. 16+600					
SEDGWICK COUNTY					
Professional Engineering Consultants, P.A.					
303 S. TOPEKA • WICHITA, KANSAS 67202 316-262-2691 • FAX 316-262-3003					
Designed by	SMP	Checked by			
Drawn by	DWR	Date	April, 2002	Job No.	97362