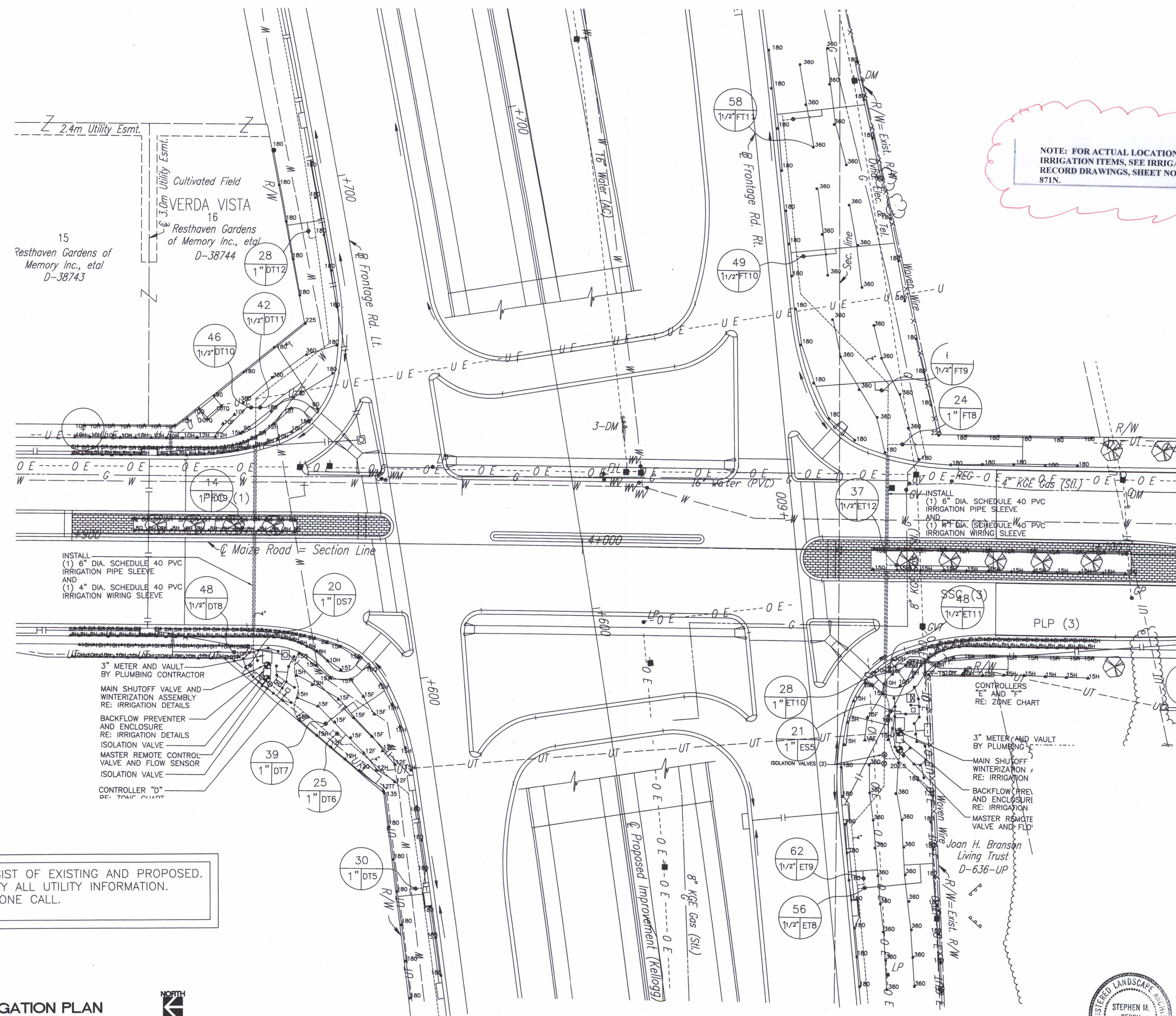


| | | | | | |
|-----------------|--------|-----------------|------|-----------|--------------|
| FHWA REGION NO. | STATE | PROJECT NO. | YEAR | SHEET NO. | TOTAL SHEETS |
| 7 | KANSAS | 54-87 K-6657-01 | 2002 | 866 | 1122 |

| | |
|--------------------|--|
| DATE | |
| BY | |
| REFERENCES NOTED | |
| REFERENCES CHECKED | |



NOTE: FOR ACTUAL LOCATION OF IRRIGATION ITEMS, SEE IRRIGATION RECORD DRAWINGS, SHEET NO. 871A TO 871N.

NOTE: UTILITIES INDICATED CONSIST OF EXISTING AND PROPOSED. CONTRACTOR SHALL FIELD VERIFY ALL UTILITY INFORMATION. COORDINATE THROUGH KANSAS ONE CALL.

INSTALL (1) 6" DIA. SCHEDULE 40 PVC IRRIGATION PIPE SLEEVE AND (1) 4" DIA. SCHEDULE 40 PVC IRRIGATION WIRING SLEEVE

3" METER AND VAULT BY PLUMBING CONTRACTOR
 MAIN SHUTOFF VALVE AND WINTERIZATION ASSEMBLY RE: IRRIGATION DETAILS
 BACKFLOW PREVENTER AND ENCLOSURE RE: IRRIGATION DETAILS
 ISOLATION VALVE
 MASTER REMOTE CONTROL VALVE AND FLOW SENSOR
 ISOLATION VALVE
 CONTROLLER "D" RE: ZONE CHART

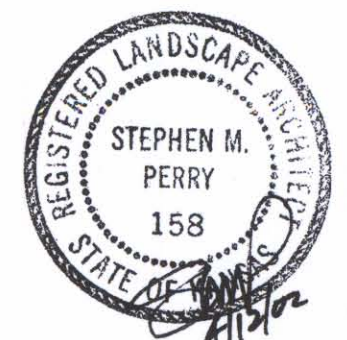
INSTALL (1) 6" DIA. SCHEDULE 40 PVC IRRIGATION PIPE SLEEVE AND (1) 4" DIA. SCHEDULE 40 PVC IRRIGATION WIRING SLEEVE

CONTROLLERS "E" AND "F" RE: ZONE CHART

3" METER AND VAULT BY PLUMBING CONTRACTOR
 MAIN SHUTOFF WINTERIZATION RE: IRRIGATION
 BACKFLOW PREVENTER AND ENCLOSURE RE: IRRIGATION
 MASTER REMOTE VALVE AND FLD



IRRIGATION PLAN
 METRIC SCALE: 1 : 400
 CONVERSION RATIO: 1 METER = 3.281'



| | | | |
|--|-----------|------------|-------------|
| 1 | | | |
| No. | Revisions | By | Date |
| KANSAS DEPARTMENT OF TRANSPORTATION | | | |
| IRRIGATION PLAN MAIZE ROAD | | | |
| SEDGWICK COUNTY | | | |
| Professional Engineering Consultants, P.A. 303 S. TOPEKA • WICHITA, KANSAS 67202 316-262-2691 • FAX 316-262-3003 | | | |
| Designed by | SMP | Checked by | |
| Drawn by | DWR | Date | April, 2002 |
| | | Job No. | 97362 |

DSNR: F/9934/1S182
 OPER: DWR
 SCALE: 1:500