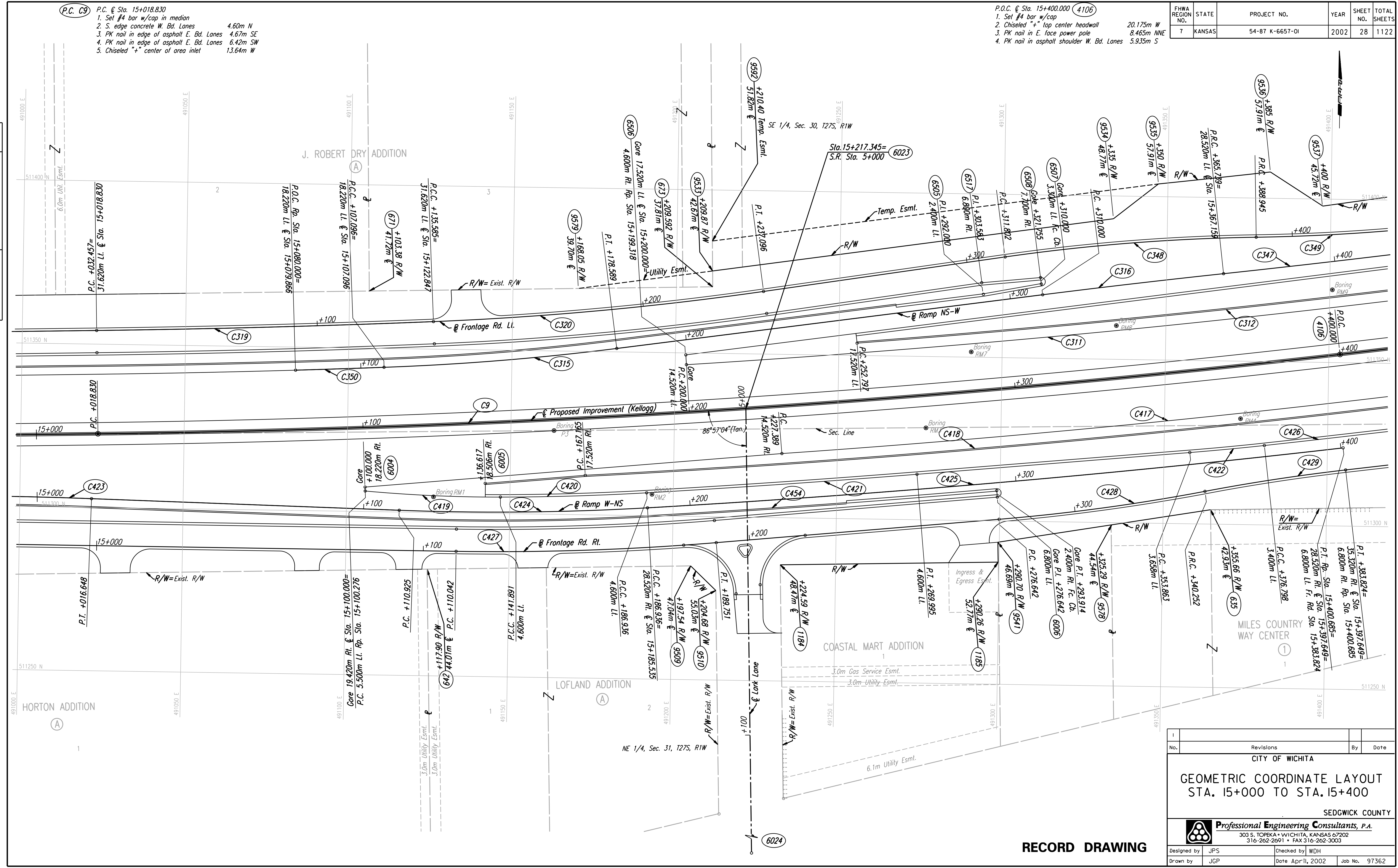


FHWA REGION NO.	STATE	PROJECT NO.	YEAR	SHEET NO.	TOTAL SHEETS
7	KANSAS	54-87 K-6657-01	2002	28	1122

- P.C. & Sta. 15+018.830
1. Set #4 bar w/cap in median 4.60m N
 2. S. edge concrete W. Bd. Lanes 4.67m SE
 3. PK nail in edge of asphalt E. Bd. Lanes 6.42m SW
 4. PK nail in edge of asphalt E. Bd. Lanes 6.42m SW
 5. Chiseled "+" center of area inlet 13.64m W

- P.O.C. & Sta. 15+400.000 (4106)
1. Set #4 bar w/cap 20.175m W
 2. Chiseled "+" top center headwall 8.465m NNE
 3. PK nail in E. face power pole 5.935m S
 4. PK nail in asphalt shoulder W. Bd. Lanes 5.935m S

DATE	
BY	
REFERENCES NOTED	
REFERENCES CHECKED	



DSMR: JPS OPER: JGP SCALE: 1:500
 i:/1997/97362/As-Builts/dgn/s/Sh 028-g150.dgn Last Rev: 8-3-07 By: gdr

Revisions		By	Date
CITY OF WICHITA			
GEOMETRIC COORDINATE LAYOUT STA. 15+000 TO STA. 15+400			
SEDGWICK COUNTY			
Professional Engineering Consultants, P.A. 303 S. TOPEKA • WICHITA, KANSAS 67202 316-262-2691 • FAX 316-262-3003			
Designed by	JPS	Checked by	WDH
Drawn by	JGP	Date	April, 2002
		Job No.	97362

RECORD DRAWING