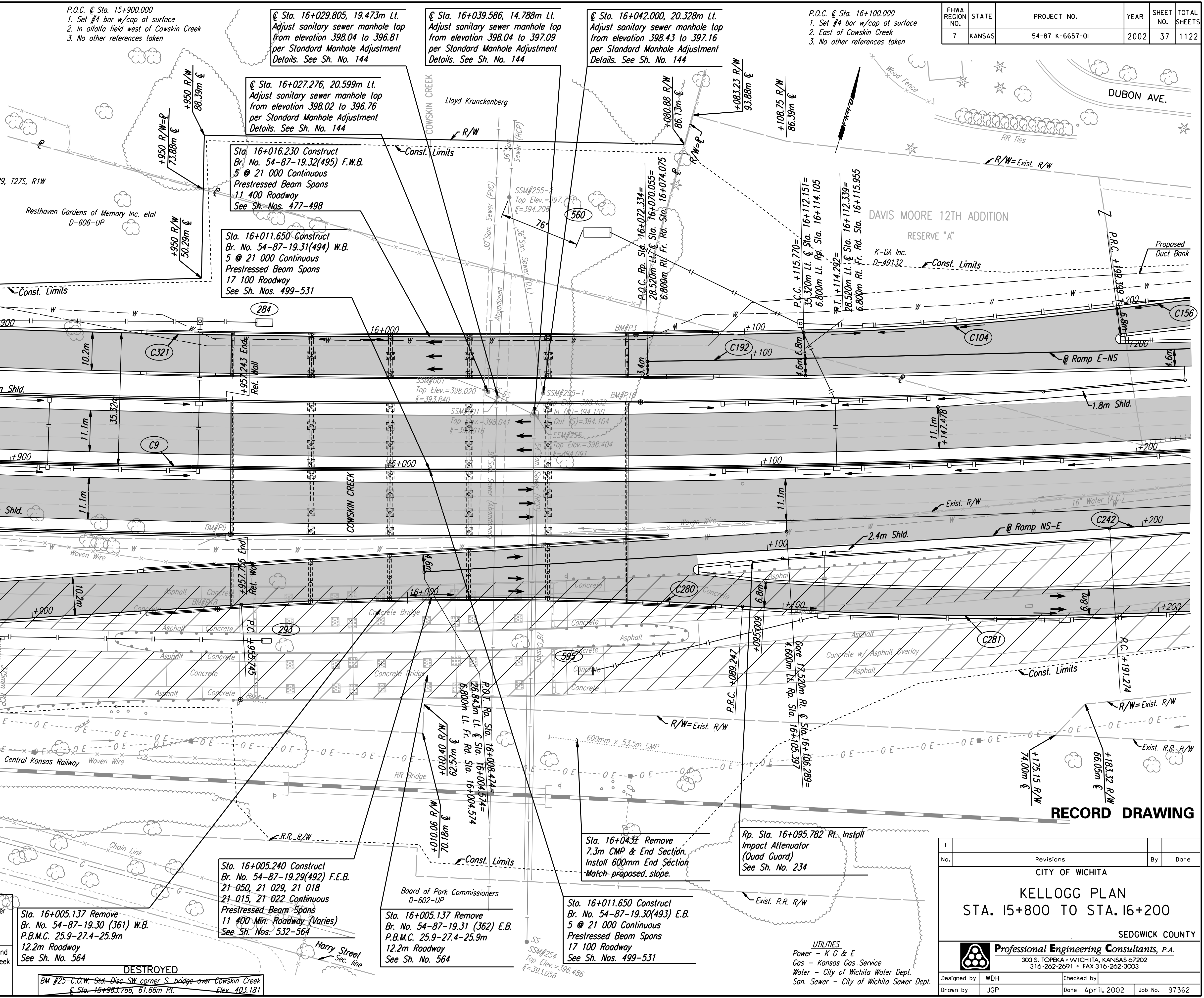


CURVE DATA							
NO.	ALIGNMENT	P.I. STATION	Δ	R	T	L	E
C9	US-54	15+783.630	23° 21' 26.8"	3700.000	764.800	1508.357	78.216
C104	Fr. Rd. Lt.	16+157.622	5° 59' 22"	806.800	41.853	83.629	1.094
C156	Fr. Rd. Lt.	16+253.523	7° 40' 33"	806.800	54.124	108.086	1.813
C192	Ramp E-NS	16+093.313	0° 39' 17"	3671.480	20.979	41.958	0.060
C242	Ramp NS-E	16+203.452	0° 41' 52"	2000.000	12.178	24.355	0.037
C279	Fr. Rd. Rt.	15+772.349	13° 16' 32"	800.000	93.097	185.361	5.399
C280	Fr. Rd. Rt.	16+022.595	7° 38' 57"	1000.000	66.850	133.502	2.232
C281	Fr. Rd. Rt.	16+187.612	11° 14' 08"	1000.000	98.365	196.100	4.826
C321	Fr. Rd. Lt.	15+787.208	10° 18' 06"	3664.680	330.343	658.905	14.859



FHWA REGION NO.	STATE	PROJECT NO.	YEAR	SHEET NO.	TOTAL SHEETS
7	KANSAS	54-87-K-6657-01	2002	37	1122

DATE	
BY	
REFERENCES NOTED	
REFERENCES CHECKED	

DSNR: WDH OPER: JGP SCALE: 1:500
 1/1997/97362/As-Built/dgn/s/5h 037-pl158.dgn Last Rev: 8-6-07 By: gdr

RECORD DRAWING

No.	Revisions	By	Date

CITY OF WICHITA

KELLOGG PLAN
STA. 15+800 TO STA. 16+200

SEDGWICK COUNTY

Professional Engineering Consultants, P.A.
303 S. TOPEKA • WICHITA, KANSAS 67202
316-262-2691 • FAX 316-262-3003

Designed by	WDH	Checked by	
Drawn by	JGP	Date	April, 2002
		Job No.	97362

BM #P18-C.O.W. Std. Disc. top South bridge rail, West end E. Bd. Kellogg Dr. Bridge (Br. #492) over Cowskin Creek
 Hwy. C Sta. +/- 15+956 m, +/- 38 m Rt. (south)
 Elev. 403.495 m

BM #P9-C.O.W. Std. Disc. top South bridge rail, West end E. Bd. Kellogg (US-54/400) Bridge (Br. #493) over Cowskin Creek
 Hwy. C Sta. +/- 15+959 m, +/- 18 m Rt. (south)
 Elev. 405.458 m

BM #P3-C.O.W. Std. Disc. top North bridge rail, East end W. Bd. Kellogg (US-54/400) Bridge (Br. #494) over Cowskin Creek above bridge data plate
 Hwy. C Sta. +/- 16+068 m, +/- 18 m Lt. (north)
 Elev. 403.227 m

BM #P3-C.O.W. Std. Disc. top North bridge rail, East end W. Bd. Kellogg Dr. Bridge (Br. #495) over Cowskin Creek above bridge data plate
 Hwy. C Sta. +/- 16+067 m, +/- 36 m Lt. (north)
 Elev. 402.803 m

BM #25-C.O.W. Std. Disc. SW corner S. bridge over Cowskin Creek
 C Sta. 15+983.766, 61.66m Rt. Elev. 403.181

Sta. 16+005.137 Remove Br. No. 54-87-19.30 (361) W.B. 21-015, 21-022 Continuous Prestressed Beam Spans 11 400 Min. Roadway (Varies) See Sh. Nos. 532-564

Sta. 16+005.240 Construct Br. No. 54-87-19.29(492) F.E.B. 21-050, 21-029, 21-018 21-015, 21-022 Continuous Prestressed Beam Spans 11 400 Min. Roadway (Varies) See Sh. Nos. 532-564

DESTROYED
 BM #25-C.O.W. Std. Disc. SW corner S. bridge over Cowskin Creek
 C Sta. 15+983.766, 61.66m Rt. Elev. 403.181

Sta. 16+005.137 Remove Br. No. 54-87-19.31 (362) E.B. P.B.M.C. 25.9-27.4-25.9m 12.2m Roadway See Sh. No. 564

Sta. 16+011.650 Construct Br. No. 54-87-19.30(493) E.B. 5 @ 21 000 Continuous Prestressed Beam Spans 17 100 Roadway See Sh. Nos. 499-531

Sta. 16+043 Remove 7.3m CMP & End Section. Install 600mm End Section Match-proposed slope.

Rp. Sta. 16+095.782 Rt. Install Impact Attenuator (Quad Guard) See Sh. No. 234