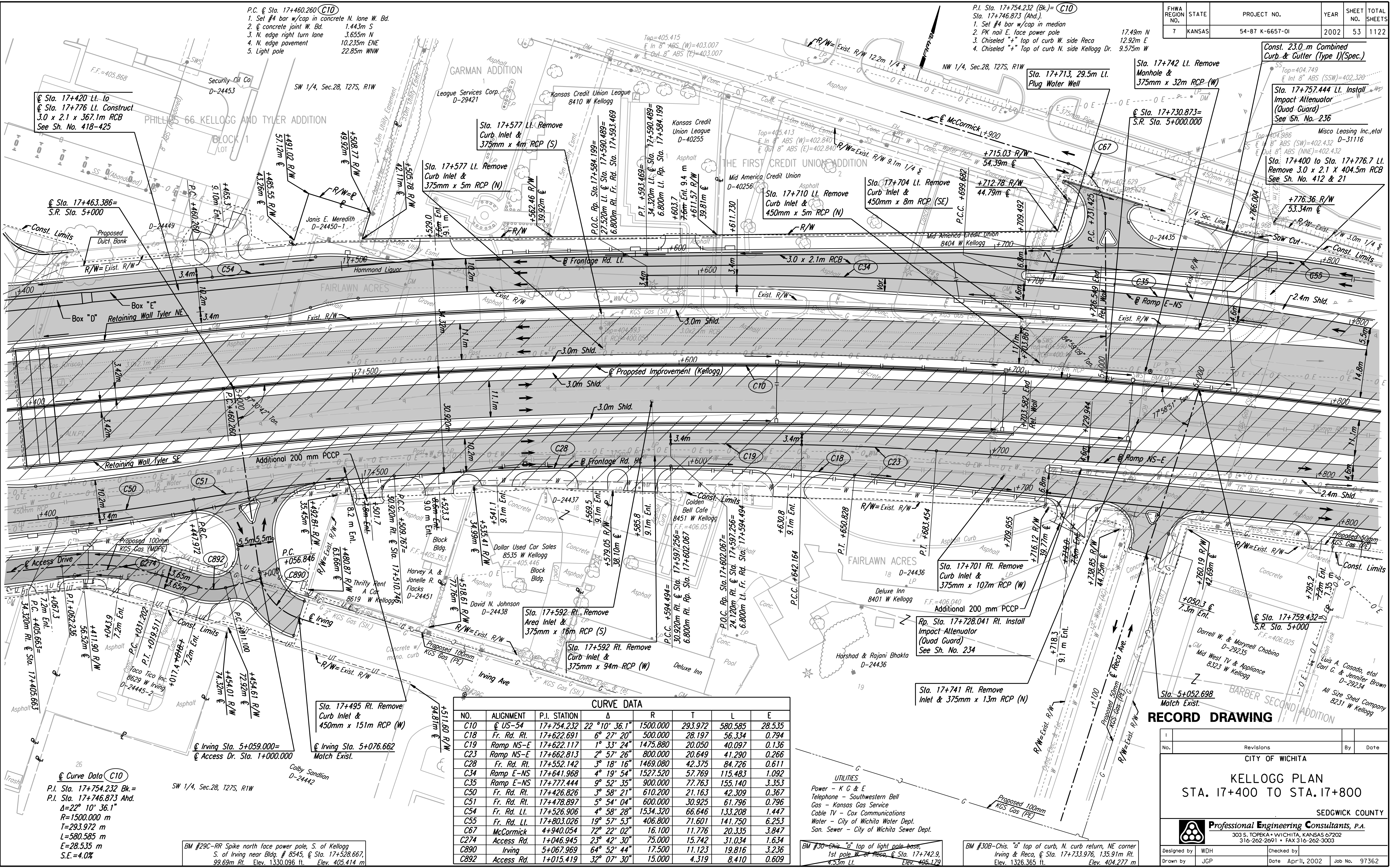


P.C. @ Sta. 17+460.260 (C10)
 1. Set #4 bar w/cap in concrete N. lane W. Bd. 1.443m S
 2. @ concrete joint W. Bd. 3.655m N
 3. N. edge right turn lane 10.235m ENE
 4. N. edge pavement 22.85m WNW
 5. Light pole

P.I. Sta. 17+754.232 (Bk.)= (C10)
 Sta. 17+746.873 (Ahd.)
 1. Set #4 bar w/cap in median
 2. PK nail E. face power pole
 3. Chiseled "+" top of curb W. side Recco
 4. Chiseled "+" Top of curb N. side Kellogg Dr.
 17.49m N
 12.92m E
 9.575m W

Const. 23.0 m Combined Curb & Gutter (Type 1)(Spec.)
 Top=404.749
 Int 8" ABS (SSW)=402.320
 Sta. 17+757.444 Lt. Install Impact Attenuator (Quad Guard) See Sh. No. 236
 Misco Leasing Inc., etal
 D-31116
 8" ABS (SW)=402.432
 8" ABS (NNE)=402.432
 Sta. 17+400 to Sta. 17+776.7 Lt. Remove 3.0 x 2.1 x 404.5m RCB See Sh. No. 412 & 21

DATE	
BY	
REFERENCES NOTED	
REFERENCES CHECKED	



CURVE DATA							
NO.	ALIGNMENT	P.I. STATION	Δ	R	T	L	E
C10	@ US-54	17+754.232	22° 10' 36.1"	1500.000	293.972	580.585	28.535
C18	Fr. Rd. Rt.	17+622.691	6° 27' 20"	500.000	28.197	56.334	0.794
C19	Ramp NS-E	17+622.117	1° 33' 24"	1475.880	20.050	40.097	0.136
C23	Ramp NS-E	17+662.813	2° 57' 26"	800.000	20.649	41.290	0.266
C28	Fr. Rd. Rt.	17+552.142	3° 18' 16"	1469.080	42.375	84.726	0.611
C34	Ramp E-NS	17+641.968	4° 19' 54"	1527.520	57.769	115.483	1.092
C35	Ramp E-NS	17+777.444	9° 52' 35"	900.000	77.763	155.140	3.353
C50	Fr. Rd. Rt.	17+426.826	3° 58' 21"	610.200	21.163	42.309	0.367
C51	Fr. Rd. Rt.	17+478.897	5° 54' 04"	600.000	30.925	61.796	0.796
C54	Fr. Rd. Lt.	17+526.906	4° 58' 28"	66.646	66.646	133.208	1.447
C55	Fr. Rd. Lt.	17+803.026	19° 57' 53"	406.800	71.601	141.750	6.253
C67	McCormick	4+940.054	72° 22' 02"	16.100	11.776	20.335	3.847
C274	Access Rd.	1+046.945	23° 42' 30"	75.000	15.742	31.034	1.634
C890	Irving	5+067.969	64° 52' 44"	17.500	11.123	19.816	3.236
C892	Access Rd.	1+015.419	32° 07' 30"	15.000	4.319	8.410	0.609

@ Curve Data (C10)
 P.I. Sta. 17+754.232 Bk.=
 P.I. Sta. 17+746.873 Ahd.
 Δ=22° 10' 36.1"
 R=1500.000 m
 T=293.972 m
 L=580.585 m
 E=28.535 m
 S.E.=4.0%

BM #29C-RR Spike north face power pole, S. of Kellogg S. of Irving near Bldg. # 8545, @ Sta. 17+528.667, 99.69m Rt. Elev. 1330.096 ft. Elev. 405.414 m

UTILITIES
 Power - K G & E
 Telephone - Southwestern Bell
 Gas - Kansas Gas Service
 Cable TV - Cox Communications
 Water - City of Wichita Water Dept.
 San. Sewer - City of Wichita Sewer Dept.

BM #30A-Chis. "d" top of light pole base, 1st pole W. of Recco, @ Sta. 17+742.9, 4.53m Lt. Elev. 405.129

BM #30B-Chis. "d" top of curb, N. curb return, NE corner Irving & Recco, @ Sta. 17+733.976, 135.91m Rt. Elev. 1326.365 ft. Elev. 404.277 m

RECORD DRAWING

No.	Revisions	By	Date

CITY OF WICHITA

KELLOGG PLAN
 STA. 17+400 TO STA. 17+800

SEDGWICK COUNTY

Professional Engineering Consultants, P.A.
 303 S. TOPEKA • WICHITA, KANSAS 67202
 316-262-2691 • FAX 316-262-3003

Designed by: WDH
 Checked by: []
 Drawn by: JGP
 Date: April, 2002
 Job No.: 97362

DSNR: WDH OPER: JGP SCALE: 1:500
 i:/1997/97362/As-Built/dgn s/SH_053-pl174.dgn Last Rev: 8-7-07 By: gdr

DESTROYED