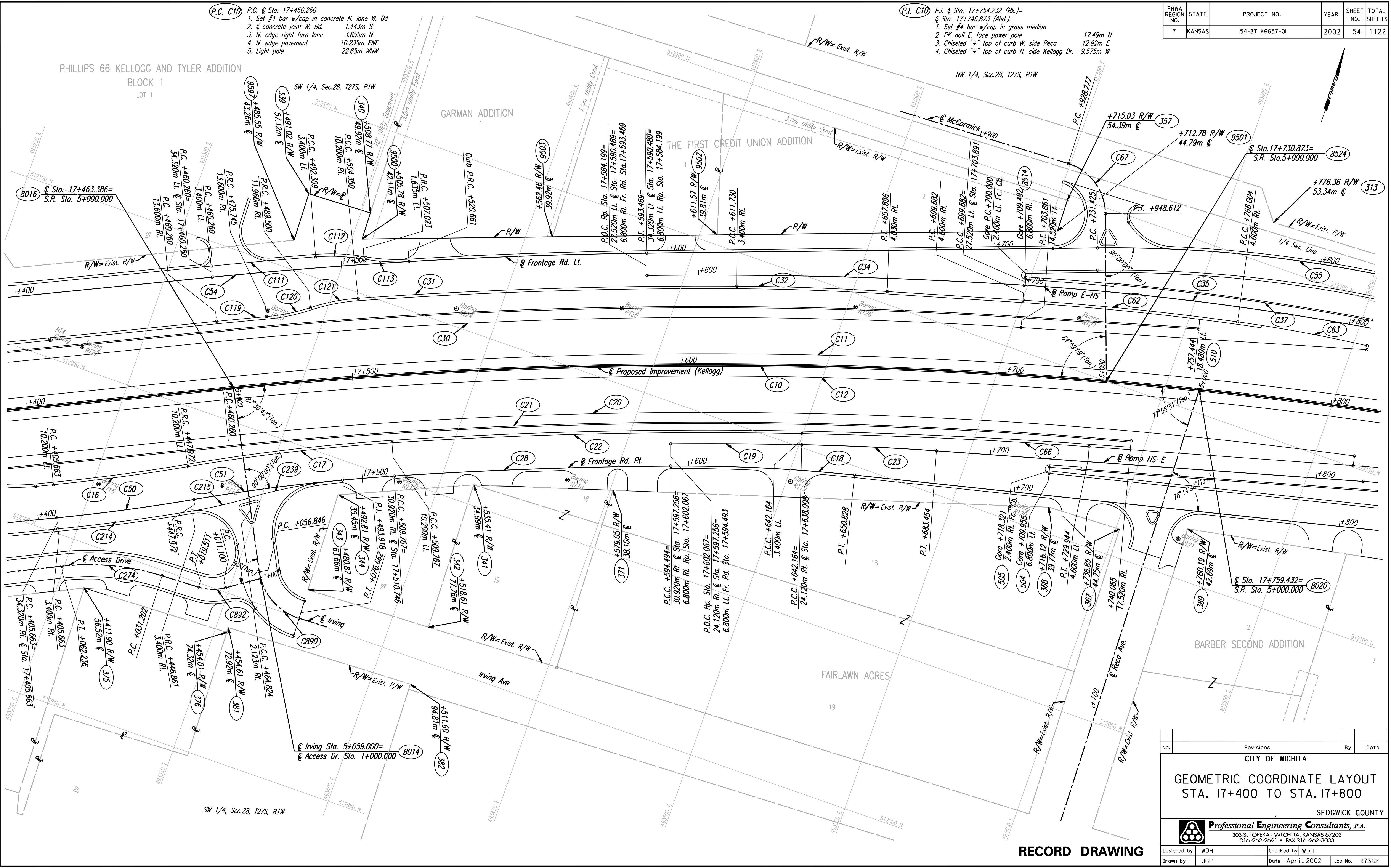


FHWA REGION NO.	STATE	PROJECT NO.	YEAR	SHEET NO.	TOTAL SHEETS
7	KANSAS	54-87 K6657-01	2002	54	1122

DATE	
BY	
REFERENCES NOTED	
REFERENCES CHECKED	

DSNR: WDH OPER: JGP SCALE: 1:500
 i:/1997/97362/As-Builts/dgn s/SH_054-g 174.dgn Last Rev: 8-7-07 By: gdr



No.	Revisions	By	Date

CITY OF WICHITA
GEOMETRIC COORDINATE LAYOUT
 STA. 17+400 TO STA. 17+800
 SEDGWICK COUNTY

Professional Engineering Consultants, P.A.
 303 S. TOPEKA • WICHITA, KANSAS 67202
 316-262-2691 • FAX 316-262-3003

Designed by	WDH	Checked by	WDH
Drawn by	JGP	Date	April, 2002
		Job No.	97362

RECORD DRAWING